

BROKERING THE DEALS THAT MAKE BRITISH AGRICULTURE GREAT

NEW YEAR EDITION • JANUARY-FEBRUARY 2024

# Wrights

## FARMING REGISTER

### INSIDE THIS ISSUE

Brokers' listings, p31

Latest News, p3

LAMMA, p14



## Massey Ferguson 9S



**AGRICAST TO LAUNCH ITS  
LATEST PRESS ROLL RING AT  
LAMMA, p20**



**CASE IH SETS BAR  
WITH NEW AF SERIES  
COMBINES, p13**



**NEW 3-IN-1 HE-VA TOP STRIGLE  
STRAW HARROW, p22**



Rose Villa Farm, Gypsy Lane, Gedney, Spalding, Lincs PE12 0AZ

Phone: 07702293727

Email: [marcus@mjpssupplies.co.uk](mailto:marcus@mjpssupplies.co.uk)

Website: [www.mjpssupplies.co.uk](http://www.mjpssupplies.co.uk)

Find us on Facebook and X @ MJPSupplies



*We supply a wide range of products for agriculture, horticulture and amenity including Water storage, fertiliser storage, oil and diesel tanks for domestic and industrial use along with a wide range of portek products*



wrightsregister.com  
 Wrights Farming Register

#### EDITORIAL

Editor: Joanna Coulthurst  
 Email: editor@wrightsregister.com  
 Designer: Anita Waters

#### ADVERTISEMENT SALES

Fran Taylor: 01323 849890/07764 230515,  
 Email: sales@wrightsregister.com

#### ADVERTISEMENT PRODUCTION

Publishing Works, Suite 3/4, Stanhope Hall, Boston Road,  
 Horncastle LN9 6NF  
 Sue Fixter: 01507 524496  
 Email: sue@publishing-works.com

#### MANAGEMENT

Managing director: Shaun van den Bos  
 Publishing consultant: Paul Appleton  
 Subscription marketing manager: Sue Fixter

#### BROKER SERVICE

Lincolnshire, Yorkshire, Humberside and the North East  
 Shaun van den Bos Tel: 07850 978188  
 Email: shaunvandenbos@gmail.com

East Midlands & East Anglia  
 Robin Sparrow Tel: 07931 886601  
 Email: robinsparrow@btinternet.com

#### SUBSCRIPTIONS

6 issues of Wrights Farming Register  
 UK subscription price: £15.00  
 Europe subscription price: £19.00  
 USA subscription price: £19.00  
 Rest of World subscription price: £22.00

#### Contact us

Customer service email address:  
 subs@wrightsregister.com  
 Customer service and subscription postal address:  
 Wrights Farming Register, Customer Service Team, Suite 3/4,  
 Stanhope Hall, Boston Road, Horncastle LN9 6NF

#### Website

Find current subscription offers at wrightsregister.com  
 Buy back issues at wrightsregister.com/backissues or  
 call 01507 524496

#### PRINTING

Mortons Print, Lincolnshire, 01507 523456

#### PRIVACY POLICY UPDATE

Wrights Farming Register Ltd takes your personal data very seriously. For more information of our privacy policy, please visit wrightsregister.com/privacy-policy/. If at any point you have any queries regarding Wright's data policy you can email our data controller at data.controller@wrightsregister.com.

Wrights Farming Register 2023 © All Rights Reserved. Wrights Register is a trading name of Wrights Farming Register Ltd. Reproduction in whole or in part is forbidden except with permission in writing from the publishers. Note to contributors: articles submitted for consideration by the editor must be the original work of the author and not previously published. Where photographs are included, which are not the property of the contributor, permission to reproduce them must have been obtained from the owner of the copyright. The editor cannot guarantee a personal response to all letters and emails received. The views expressed in the magazine are not necessarily those of the Editor or the Publisher. Wrights Farming Register Ltd accepts no liability for products and services offered by third parties.

Wrights Farming Register Ltd uses a multi-layered privacy notice, giving you brief details about how we would like to use your personal information. For full details, visit wrightsregister.com, or call 01507 524496.

If you have any questions, please ask as submitting your details indicates your consent, until you choose otherwise, that we and our partners may contact you about products and services that will be of relevance to you via direct mail, phone, email or SMS. You can opt out at any time via email: data.controller@wrightsregister.com or 01507 524496.

# Counting the cost of compaction

A wet autumn has hampered planting and left some farmers using min and zero tillage establishment systems concerned about soil compaction.

Waterlogging caused by soil compaction has been attributed to plateauing crop yields by the Potash Development Association, with some losses likely to reach 80%.

The PDA suggests that whilst little can be done to change the higher than average rainfalls experienced in many areas of the UK, farmers can take measures to reduce compaction.

Machinery and tyre specialists, such as Continental's Tom Godwin, have been working with farmers to explain the technology available to help reduce the impact of heavy machinery on soils.

"Managing tyre pressures using pressure monitoring systems and choosing VF tyres to operate at 40% less pressure than standard radial tyres will make a significant difference to soil health. This will be particularly prevalent in min-till and zero tillage systems when operators are not turning over land to alleviate or remove compaction," says Mr Godwin.

In a November report the PDA suggests that yield losses due to waterlogging may vary between 15% and 80% in 2023/24, depending on the crop species and growth stage, soil type and duration of the stress, which will result in severe economic penalties. The report says:

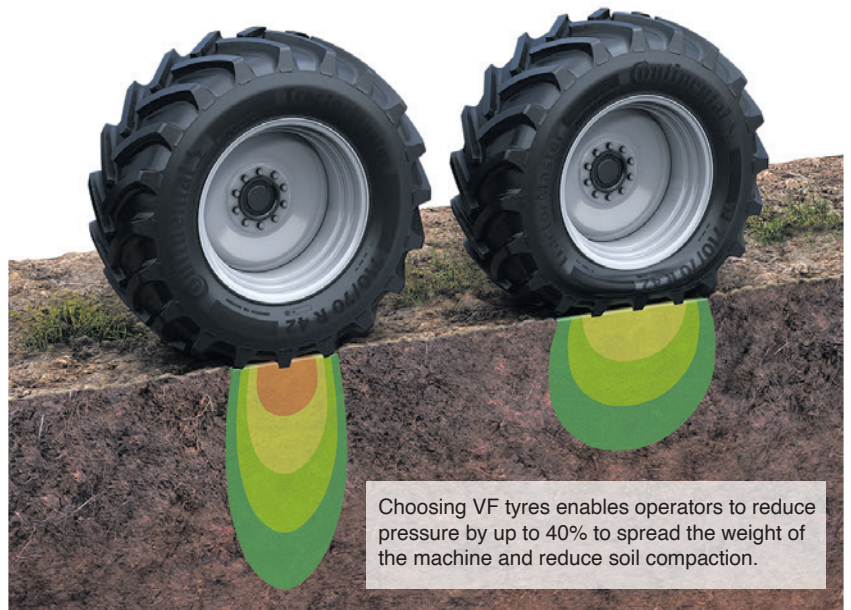
"Establishment is the most critical period in any annual crop's life-cycle, as it is the time when the yield potential is set...and that...any management decisions taken from this point onwards only helps limit the reduction in this yield potential."

Mr Godwin echoes this, saying:

"Continental has been working with farms for five years, as part of our Stamp Out Soil Compaction initiative, to help improve land management decisions through the use of more efficient tyres. Our TractorMaster tyres have been specifically designed to reduce compaction by operating at lower pressures and we are always looking for ways to explain these benefits to operators who want to improve soil health."

It is widely accepted that compacted and waterlogged soils block oxygen supply to roots, restrict root growth and reduce nutrient uptake. As the wet weather has taken its toll again in 2023, it is hoped that with investments in tyre technology the severity of the problem can be reduced in the future.

"It is easy to say that waterlogging is just the effect of heavy rainfall and gloss over the real issue. Farms that have understood the threat and changed their tyres to minimise the impact of heavy machinery on soil will suffer less now, and in the future, with soil compaction and waterlogging," he concludes.



Choosing VF tyres enables operators to reduce pressure by up to 40% to spread the weight of the machine and reduce soil compaction.

# Hidden impacts of the Autumn Statement

Farmers didn't see many headline benefits from the Chancellor's Autumn Statement – but there were some smaller hidden impacts to be aware of, according to rural accountant Old Mill.

## National Insurance

Of course, the headline reductions in National Insurance will benefit everyone, from the self-employed to employers and their employees. "That will help take the edge off the stealth tax increases and threshold freezes," says partner Andrew Vickery. Income tax thresholds remain unchanged, and with inflation and the rise in the living wage, it's a question of giving with one hand and taking back with the other.

"However, it could be worth delaying Christmas bonuses until the New Year, when the NI reductions come into force, so that employees receive more of the money – although it rather undermines the point of a Christmas bonus!"

## Capital expenditure

Lifting the limit on how much capital expenditure limited companies can put against profits in a single year sounds like a positive move – although

retaining the £1m cap for sole traders and partnerships smacks of an uneven playing field. That said, the Annual Investment Allowance is more open than full expensing for companies, as second-hand equipment is eligible for the former, and not for the latter, says Mr Vickery.

"In reality, how many sole traders and partnerships expect to spend more than £1m in a single year? Even if you're putting in a major new parlour or grain store, that expenditure often means other purchases are put on hold, and often it can be spread over two financial years."

## Benefits

Trimming the benefits regime to encourage more people into work is more of a political football than an economic one, he notes. And while having more people in the workplace should in theory mean more available to agriculture, the reality of hiring someone who doesn't have the necessary skills for the job is unlikely.

## ATED

One of the more hidden elements of the Statement was a 6.7% increase in the Annual Tax on Enveloped Dwellings (ATED). This tax is relatively

unknown, but many agricultural businesses will be exposed to it, warns Mr Vickery. Often farms have properties which are rented to the farm company or partnership which has a company member. These dwellings are subject to the ATED, with houses worth between £500,000 and £1m incurring a tax of £4,400/year from 1 April 2024. Properties worth more pay higher tax on a sliding scale.

"Most farmhouses, farm workers' properties, and let cottages are exempt – but you must apply for the exemption each year," he explains. "If you're not aware of the tax and haven't applied for the exemption for several years, then you're going to face a big tax bill and penalties. With the increase in the ATED it's going to be 6.7% more costly not to understand this tax and deal with it appropriately."

## Self-employed

Another under-the-radar change affects how self-employed people can prepare their accounts. Previously, anyone with a turnover over £150,000 was required to use the accrual basis – now that limit



has been removed, so anyone can choose to use the cash basis instead. "The cash basis is a simpler system, but people should be very wary before using it," warns Mr Vickery. The fluctuations in cash flow can make accounts look very strange when presenting to a bank for a loan, for example. And those using the cash basis lose the ability to offset losses from the farm against other sources of income.

## Pensions

When it comes to future changes, the Chancellor announced a consultation into whether employees should be able to keep their pension pots for life, rather than having different pensions set up each time they change jobs. "I can see that being a real benefit for employees, but it will be a real headache for employers, having to pay into different pensions for every employee," says Mr Vickery.

## Inheritance Tax

In terms of headlines which

## Ktwo relaunches it's Warwick Trailers range

Ktwo, a leading manufacturer of muck spreaders and trailers, is thrilled to announce the relaunch of its Warwick Trailer range, marking a significant comeback with a quality range and a commitment to meeting the evolving needs of the market and their customers.

The revamped Warwick Trailers range is the culmination of focused efforts to meet customer demands while providing enhanced support for their dedicated dealership network. Understanding the potential for dealers to offer a comprehensive range of trailers that complement the Ktwo series, this relaunch is a pivotal milestone, breathing new life into the Warwick Trailers brand.

Key highlights of the relaunched

Warwick Trailers range include:

**Streamlined Range:** The relaunched range now offers an expanded selection of trailers, including tipping trailers ranging from 4 to 12 tons, flatbed trailers spanning 18 to 28 feet, 7 and 10 ton drop deck trailers, and drop-side trailers varying from 2 to 12 tons, tailored to meet smaller-scale agricultural needs.

**Quality Build and Finish:** Warwick Trailers have been designed to meet the stringent quality standards synonymous with the Ktwo brand. Featuring shot-blasted paint preparation and finished with a two-pack undercoat and a two-pack topcoat paint, these trailers guarantee durability and an impeccable finish.

"We are excited about the reintroduction

of the Warwick Trailers range, which we believe perfectly complements the Ktwo range and effectively caters to the diverse needs of the industry," stated Terry Kelloway, Ktwo Founder. "This relaunch is a testament to our commitment to delivering high-quality products that meet the expectations of our dealers and customers."



were touted but never came to fruition, the expected reform of Inheritance Tax (IHT) yielded nothing. "There were some expectations of reducing IHT from 40% to 20%, or raising the payment threshold – but Labour would have made hay with that. All eyes are now on when there will be an election and how quickly after that there will be changes. And it's almost unthinkable that Labour will cut IHT while putting VAT on school fees – so if a change is made it's unlikely to be a beneficial one."

#### Child Benefit

Finally, the decision not to reform Child Benefit will be a blow to parents on a reasonable income. Anyone earning over £50,000 sees their Child Benefit payments restricted, explains Mr Vickery. "That's rather unfair on hard working people who've got children, particularly given the rate of inflation. Those who are self-employed have the ability to manage their accounts to avoid this pitfall, but you have to be aware of it in the first place."

● For more information visit [www.om.uk](http://www.om.uk).

## Emergency onion seed treatment

A collaborative effort to allow a vital seed treatment for 2024 sowing has succeeded. Emergency authorisation of the Force seed treatment for bulb onions was passed on 1st December 2023 and will enable its use until 15th April 2024. Rae Cook, chair of the British Society of Plant Breeders (BSPB) seed treatment forum explains:

"The combined efforts of the British Onion Producers Association (BOPA), Horticulture Crop Protection UK Ltd (HCP), BSPB and Syngenta UK Ltd has secured this essential seed treatment. The threat of bean seed fly can be too great without it and all those involved are appreciative of the prompt response and support of the Chemicals Regulation Division (CRD)

of the Health and Safety Executive (HSE)."

Whilst authorisation has been passed to use the seed treatment, the CRD expects farmers and growers to follow the conditions of use carefully and diligently.

"Seed treatments represent a highly accurate and targeted application of plant protection products that deliver the product exactly where it is needed. Growers need to hold a copy of the approval and stewardship form, which can be found on the pesticide database of the HSE website, [www.pesticides.gov.uk/search/offlabels](http://www.pesticides.gov.uk/search/offlabels)," adds Mrs Cook.

She also suggests there is the potential for further emergency authorisations for other crops that could be made available.



"We need users to comply with the details of all stewardship instructions to demonstrate best practice and encourage the authorisation of more seed treatments to aid seedling establishment in the future," she concludes.



## SHARNFORD TRACTORS LTD

Lodge Farm, Broughton Rd, Frolesworth, South Leics. LE17 5EH

Tel: 01455 209300 Mobile: 07831 400485 / 07836 661442

[www.sharnfordtractors.co.uk](http://www.sharnfordtractors.co.uk)

### New in stock for 2024

CLAAS Greenline Machinery now available from Sharnford Tractors Ltd;  
Mowers, tedders, rakes and balers; call for details.



#### Tractors, Telehandlers, ATV's.

CLAAS AXION 810 CIS+ 215Hp. 50K 650/540 tyres, 4 spools, 5.8T Fr.links. Demo unit.  
CLAAS ARION 650 CIS+ 184Hp. 50K, 650/540, 4 spools, front links. New in stock.  
CLAAS ARION 630 CIS+ 165Hp. 50K, 650/540 tyres, 4 spools, 4T Fr.links. In stock.  
CLAAS ARION 430 CIS 115Hp. Loader brackets. New in stock.  
CLAAS ARION 420 C 100Hp. 420/340 Tyres. FL120 Loader Panoramic roof. Demo unit.  
CLAAS ARION 420 C 100Hp. 420/340 Tyres. New in stock  
CLAAS ARION 620 CIS '64 reg. 145Hp. 40K fitted FL120 loader. 650/540 Tyres.  
RENAULT R3042 1949. Vintage 2.0 Litre petrol tractor. In show condition.  
MANITOU ULM412. The new baby Manitou, demo unit now in stock. Euro headstock.  
MANITOU MLT741-140V+ & MANITOU MLT737-130, new in stock.  
MANITOU MLT635-140V+. MLT630-115V. New units now in stock.  
MANITOU M130D. Diesel Ind forklift. 3T cap, 4.7Mtr free lift mast. S/Shift. Demo  
MANITOU MLT630-105D. '70 reg. very low hours, warranty to 04/26/2000Hrs. As new.  
MANITOU MLT737-130PS. '69 reg. Very nice machine.  
MANITOU MLT635-130PS. '19 reg. 5500 Hrs.  
MANITOU MLT634-120 '11 reg. MANITOU MLT626T. 'L reg. Very tidy for age .20" wheels  
MANITOU Buckets, brushes and manure grabs, all in stock. Special offers.

#### New Machinery now in stock

BUNNING 120 & 150 Lowlander spreaders. Slurry door, WA PTO, in stock  
LEMKEN JUWEL 8 6F reversible plough, slatted bodies, demo unit.  
SHEAR GRABS 1.9 & 2.1 Mtr, 2 & 3 Ram, in stock.  
KIDD TWY634TS6H Post bumper. KIDD 450T Trilled straw shredder.  
PAN MIXER FLIEGL 800, 75C.Mtr, 3pt linkage concrete mixer.  
CLAAS DISCO Mowers/Mower conditioners, VOLTO tedders, LINER Twin rotor Rakes,

HARDI NK800 12Mtr Sprayers, in stock. FLEMING Single disc fert/salt spinners.  
CLAAS ROLLANT round baler, in stock.  
ROTAVATORS & FLAIL MOWERS from Concept, various models in stock.  
PORTEQUIP 13T Bale trailers, 26' & 22', in stock. Large wheels.  
PORTEQUIP Lamb & Calf creepers, Cattle feed trailers, all in stock.  
BALE HANDLERS; Albutt, Fleming & MX, all in stock. MX 3xBig Square HD  
FLEMING Toppers, Aerators & Rolls, in stock. BROOMEX Mega brushes.  
LOGIC SALT SPREADER & ATV Flail mowers, aerators, trailers, all in stock..  
NRH 6.3 Mtr 24" Hyd fold rolls c/w breakers & shatterboards. New in stock.  
SUMO GLS 3 Leg grassland subsoiler. Auto reset legs. FRONT WEIGHT. New in stock.  
MOULTON & BROWNS Galvanised yard scrapers & Silage pushers in stock.  
BROOMEX Pallet tine fixing brushes. 5.6 & 8' all in stock.  
CHERRY Buckets, Manure grabs, Bag lifters, Man platforms all in stock.

#### Used Machinery in stock

SHELBOURNE Powerblade HD870 Tele. 2016. 5' head. 4pt linkage ..... P.O.A  
SHELBOURNE PowerMix Pro 13 feeder, 2016. 300 Cubic bedder ..... P.O.A  
BOMFORD B508 Hedgetrimmer. 4' head, cable controls. V Tidy..... P.O.A  
SUMO 3 mtr Front tyre press, ripper tines. RABE DUPE 9/9 Furrow press..... P.O.A  
KUHN HR4002 / ACCORD Combi unit. Fully recon, looks like new ..... P.O.A  
KRONA KW7.70/6.7. CLAAS VOLTO, KONGSKILDE 665H Tedders, in stock.  
BALLAST ROLLS 8' & 6'6". LOGIC ATV Flail, 16Hp, choice of three ..... P.O.A  
TOPPERS. In line. FLEMING 5' & 6' ..... P.O.A  
OFFSET TOPPERS Major 800SM & Twose 8..... P.O.A  
FLAIL Topper Weaving 2.6Mtr, 2018.

ALL PRICES PLUS VAT



"SUPPORTING FARMING AND THE COUNTRYSIDE"



# THINK ONE STEP AHEAD TO REDUCE FARM SECURITY RISKS

Simple steps to help reduce risk of loss, theft, damage or injury can also help insurance premiums

With pressure on margins and continued volatility of input costs, twinned with shorter, darker days in mid-winter, the

farming industry's exposure to risk has never been higher, and farmers are being urged to take a proactive approach to farm security.

With latest rural crime figures suggesting that farmers are now not only facing the threat of opportunists, but also organised criminals targeting high value goods and equipment, measures need to be implemented to reduce risks and limit opportunities, according to agriculture insurance specialists, Acres Insurance Brokers.

"Farm security is sometimes treated with a relaxed approach,

but even if only adding a further layer of deterrent, simple measures can have a huge impact, particularly for putting off the opportunist criminal looking for a quick gain," says director Georgie Spencer.

"As an industry, we are open to a wide range of risks and threats, but there are some simple precautions we can take to help reduce the risk of losses and theft."

Of course, the best form of defence is to stop any unwanted visitors at the farm gate. An open and inviting driveway up to unsecured farm buildings, workshops and machinery is an



## Five lessons from 2023 that could help improve grass silage in 2024

With challenges in the dairy sector creating a strong case for maximising milk production from homegrown forage, UK dairy farmers are being urged to heed key lessons from 2023 silage making.

According to Ecosyl silage specialist, Peter Smith of Volac, many farmers either have a very wet silage cut or a low energy, fibrous cut in clamps, or both – resulting in milk yield depressions of upwards of 1.5 litres/cow/day. Clamp slippage is also an increasing issue, he notes.

"Learning from these and other issues offers an opportunity to respond to them in 2024," Mr Smith points out. He offers the following tips:

1. Consider an early first-cut Farmers who took an early first-cut gained a head start in 2023, says Mr Smith. "Taking first-cut early, for example during April, may not produce much bulk, but it clears out old, overwintered grass leaving fresher growth for a better second-cut. Farmers who did this often had two cuts 'banked' by the time a normal first-cut was taken by the end of May."

2. Think about cutting more often

Linked to the above, Mr Smith says farmers who cut more often, while grass was

younger and leafier, continued to benefit. "Younger grass is more digestible, which means it's higher in metabolisable energy (ME), a key driver for milk production. It also tends to be higher in protein.

"Our research has also shown a silage yield improvement of 0.92 t/ha more total dry matter (DM) over a season by cutting more often and taking more cuts. More frequent cutting also reduces weather risks because lighter cuts are easier to wilt. It may simply be a case of moving from three to four cuts, or four to five. If one cut is compromised by the weather, it also represents a smaller proportion of the total tonnage ensiled."

3. Fine-tune cutting to the weather

Although grass grew well during the early and latter parts of the season, the hot, dry June caused growth to nosedive, says Mr Smith. During mid-summer, grass naturally becomes stemmier and more lignified, which reduces digestibility, he says. But June 2023 exacerbated this, which may explain the poorer silages made during this period, he believes, and the resulting dips in milk yields.

"Consider cutting a bit earlier during prolonged sunny weather as grass is at risk of

becoming excessively stemmy and lignified.

"At the opposite end of the weather scale, we also saw fairly wet silages made during rainier months. Although not ideal, provided effluent isn't going to be a problem, you might be better off ensiling cut grass slightly wetter than normal if rain isn't abating, rather than leaving it in the field and risking losing more quality. The proviso is that the more water there is in silage, the bigger the fermentation that is required."

4. Manage clamp slippage at source

The increasingly common problem of clamp slippage often occurs in grass cut while still young and tender and when ensiled at less than 30% DM, says Mr Smith, and in clamps loaded too high and possibly over-rolled.

"To counter this, action needs taking at the point of making silage. Wilt to at least 30% DM, possibly 35% with very leafy material. Equally, don't load clamps too high as this increases pressure on the lower part of the clamp. Some farmers also place a row of bales in the middle of the clamp when filling it, for extra grip against silage moving forward, which seems to help."

5. Remember what an additive can bring



Peter Smith in grass crop  
Caption: Taking an early first-cut, for example during April, may not produce much bulk but it clears out old, overwintered growth leaving fresher grass for a better second cut, says Volac silage specialist, Peter Smith

Mr Smith says although a proven additive, such as Ecosyl 100, is recognised for improving silage fermentation and preservation of quality and DM, there are scenarios where the case for ensiling with a proven additive becomes even stronger.

"Grass cut younger is a prime example because it tends to be lower in sugar for the fermentation. It can also be higher in unused nitrogen, which buffers the fermentation. Shorter cutting intervals also increase the case for improving the fermentation with an additive because there's less time for slurry bacteria to dissipate if applying slurry between cuts. "Silage made wetter is another good case for an additive, as it requires a more extensive fermentation, and is at greater risk from clostridia bacteria from soil," he concludes.



open invite to the opportunist thief.

Where possible, Ms Spencer advises installing security gates, barrier gates or sliding gates, ideally with number plate recognition and recording. However, if the determined criminal does get past the farm gate, the insurance specialists are reminding the industry of a number of measures that can be implemented.

"Consider the use of alarm systems as part of a series of defences to put off potential thefts or attacks," she says.

"Measures inside buildings, for example tamper alarms on diesel tanks, or lockable cabinets for high value tools, plus CCTV and security cameras are an additional security and deterrent."

## Machinery and technology

High value equipment and machinery have always been a target for criminals, and latest crime figures show this to be a trend that continues to rise. Alarms, immobilisers and trackers can all play their part in reducing that threat.

"There are simple management practices that should always be adopted. For example, remove GPS receivers from vehicles and machinery," says Ms Spencer.

"An even more simple one - don't leave vehicles and machinery such as trucks and gators unlocked or leave keys in the ignition. It is obvious I know, but we see examples far too frequently," she adds.

## Insurance implications

While the implementation of new security features and additional precautions will involve some level of investment, it will certainly bring peace of mind. And while installing additional measures may not directly link to reduced insurance premiums, it will have

a benefit, according to Acres Insurance Brokers.

"Insurers will look more favourably at a willingness to deter criminals, and if higher sums are insured, and suitable theft measures are in place, premiums are unlikely to rise," says Ms Spencer.

"On the flip side, if multiple claims for theft are made, the insurer will likely insist on security features being installed, so the farmer ends up with a higher premium anyway, and will still have to pay for the security measures," she adds.

Although insurers may not give a direct discount straight away for implementation of security measures, they will help keep insurance premiums down in the long term.

"The less claims for theft you make, the more negotiating power we, as the broker, have with insurers, to keep premiums down. Nobody benefits from an insurance claim, and therefore avoiding them happening is in the interest of the farmer," explains Ms Spencer.

## Replacement costs

With the continued appreciation of farm equipment and machinery values, alongside increased costs of repair, it is important to consider sums insured, with an eye on replacement costs.

If faced with the loss or damage of machinery, vehicles or equipment by intruders, unless policies have been reviewed and sufficient replacement sums insured, farmers can face significant downtime and potentially catastrophic losses. The same applies with livestock.

"Ensure all stock is insured for reinstatement, whether for breeding stock, or for finished or sale value, and always ensure fields, fences, pens and gates are secured to deter theft," says Ms Spencer.

# P&D

ENGINEERING (BREDON) LIMITED



[www.panddengineering.com](http://www.panddengineering.com)

## New and Used Machinery Offers

Good range of quality used Merlo telehandlers currently in stock

<b>New Merlo 42.7</b> Telehandlers. Choice of two. One with cab suspension.....	£POA
<b>New Merlo 33.7-115.</b> Aircon, Boom suspension, air seat, hitch.....	£POA
<b>New Merlo 27.6 Plus</b> .....	£POA
<b>2016 Merlo 50.8</b> Telehandler. 4234 hours. Very good condition.....	£POA
<b>2003 Merlo 26.6</b> Telehandler. 7,500 hours. Good condition for year.....	£15,000
<b>2019 JCB 541-70</b> Telehandler. 3,600 hours. Excellent condition.....	£POA
<b>2018 Kramer KT357</b> Telehandler. 5438hours. Nice condition.....	£POA
<b>New McCormick X5100</b> Tractor. 0% finance available (T&Cs).....	£POA
<b>New McCormick X4-110F</b> Fruit Tractor. High spec. 0% finance available (T&Cs).....	£POA
<b>New McCormick X6.415HD</b> .....	£POA
<b>2019 McCormick X7660.</b> Front Linkage. 3,000 hours. Excellent condition.....	£POA
<b>New Teagle Tomahawk 8200T</b> Bale Processor c/w wide angle PTO.....	£18,200
<b>2016 Kioti DK 4510</b> and front loader. Good condition. Low hours.....	£15,750
<b>2007 327 JCB</b> Compact tractor. Nice condition. No VAT.....	£7,250
<b>New Vicon 5216</b> Supercut round baler.....	£POA
<b>New Vicon BW2600J</b> Trailed Bale Wrapper. Low Price.....	£11,750
<b>New Vicon Index 434</b> Single rotor rake.....	£5,950
<b>New Vicon Index 464</b> Single rotor rake.....	£6,500
<b>New Vicon RO-XL EDW</b> Geospread Fert spreader 3,225 litres.....	£POA
<b>Vicon Index 724</b> Twin rotor rake. New.....	£POA
<b>Vicon Fanex 764</b> 6 rotor tedder. New.....	£9,950
<b>New Grasshopper 124/48</b> Zero Turn Mower for lawns, paddocks and orchards.....	£6,175
<b>Used Kuhn MDS1142</b> Fert Spreader. Good Condition.....	£2,250
<b>Used Kuhn Primor 2060M</b> Mounted Straw Chopper. Good Condition.....	£9,750
<b>Kverneland Accord Exacta TL3600</b> Fertiliser spreader. Good Condition.....	£3,650

See our website for complete listings and a huge selection of new and used machinery

Fleet Lane, Bredon, Tewkesbury, Glos. GL20 7EF -  
01684 772912 - [info@panddeng.co.uk](mailto:info@panddeng.co.uk)

**Farmplus**  
SPECIALIST SUPPLIER OF TIMBER BUILDINGS

**Recruiting Reps -  
See website for details**



Timber Buildings.  
Natural products from  
renewable sources.  
Caring for the environment.

EXAMPLE  
**3 BAY MONOPITCH**  
as shown  
45ft X 17ft X 10ft 6in  
eaves

**£7,900.00 + VAT**  
(£9,480.00 incl VAT)  
delivered

Price correct as of  
December 2023  
Many other options  
available - please see website

**FARMPLUS**  
SHAY LANE, LONGRIDGE, PRESTON PR3 3BT  
TEL: 01772 785252 [www.farmplus.co.uk](http://www.farmplus.co.uk)

**TRACTORS UK**  
SOLE UK IMPORTER OF TAFE TRACTORS

**BASIC, SIMPLE & RELIABLE**

- 37hp, 47hp & 60hp
- 2WD or 4WD
- 2 year warranty
- Comprehensive parts backup



Call us on  
**01258 817 372**  
[info@tractorsuk.co.uk](mailto:info@tractorsuk.co.uk)

**[www.tractorsuk.co.uk](http://www.tractorsuk.co.uk)**

**UK SERVICE**



*Suitable for*  
Warehouses, Barns,  
Silos, Containers,  
Potato Stores,  
Grain Stores,  
Workshops, Garages  
*and much more...*



**SEALS UP LEAKS  
(WEATHERPROOFING)**

**CLASS 1 FIRE RATED  
STRUCTURAL STABILISATION**

**HELPS CONTROL  
CONDENSATION**

**ENCAPSULATE ASBESTOS**

**WARMER IN WINTER  
COOLER IN SUMMER**

**CONTROLS DUST AND DAMP  
WITHIN PROPERTIES**

**25 YEAR MANUFACTURER'S  
WARRANTY**

**TAG  
INSULATION**

T: 0800 448 0457  
M: 07722 075078  
E: [info@taginsulation.co.uk](mailto:info@taginsulation.co.uk)  
[www.taginsulation.co.uk](http://www.taginsulation.co.uk)

**SPECIALISTS IN CLOSED CELL SPRAY FOAM INSULATION  
CALL NOW TO ARRANGE A FREE SURVEY**

   As seen on Facebook



## Tilt correction system central to MULTI-LEADER XT updates

A tilt correction system that aligns the working angle of the plough to maximise the available tractor power and increase work rates is part of several updated features on KUHN Farm Machinery's MULTI-LEADER XT plough range.

Originally introduced in 2012, the range is available in seven, eight or nine furrows and features a 180mm x 180mm beam and ability to plough from 350mm (14in) to 500mm (20in) widths. The plough is a semi-mounted single wheel unit, offering both on-land and in-furrow options for large scale arable units and contractors running tractors up to 405hp.

The patented KUHN tilt correction system helps to reduce fuel use, lower slippage, and reduce wear on the plough. The system is compatible with GPS to streamline the relationship between tractor and machine and constantly adjusts to



maintain optimum working width while maximising the tractors power in both on-land and in-furrow formats.

Edd Fanshawe, KUHN's arable product specialist, says the tilt correction system will increase working efficiency. "Tilt correction is standard on the full range of MULTI-LEADER XT models and allows ploughs up to 9 furrows to align with the tractor's pull line. The system will help users achieve the most efficient ploughing operation, especially when combined with GPS."

On-land users can operate tracked or twin tracked machines up to 4.5m wide. This setup helps to reduce fuel consumption and increase comfort, while lowering compaction of the furrow base. Tool-free adjustment of levelling, tilt and offset save users time when setting up and making changes during work to suit conditions.

Other new features include a Z-beam to accommodate the single 1,200mm x 500mm wheel position within the main beam to allow a streamlined and compact design. A bevelled rear extension helps operators plough tightly to fences and hedges, while a press arm is available for both on-land and in-furrow setups. The new design lets trailed presses work up to the edge of the field but maintain a safe road transport position when folded.

Edd concludes: "The plough is still a vital tool in the cultivation strategy for many farms and even growers who previously turned away from ploughing are now using one in a targeted way. These updates to the MULTI-LEADER XT increase the options for operators after high output ploughs."

## FARMING FINANCE

**We're here for the rainy days as well!**

Equipment-Livestock-Feed-Fertiliser-Seed-Cash Flow  
Diversification Projects-AgChem-Building-Debt Consolidation



**There's a load of reasons to call us**

- Finance from £10k to £5m
- Excellent rates
- Simple, quick phone application
- Tax efficient
- High street banks unsupportive
- Tenant farmers welcome
- 6 month to 20 year terms
- Decision within 24 hours
- Bad credit history, large debts - no problem!



Contact Chris Day on 07769 705004  
or [chris.day@abftd.co.uk](mailto:chris.day@abftd.co.uk)

Only available in England, Wales & Scotland



**Specialists in Tractor Parts & Manuals**



**WE STOCK 1,000S OF GENUINE PARTS & MANUALS**

**WE SUPPLY PARTS FOR:**

- Vintage & Classic Tractors • JCB • Case/IH
- New Holland • Votex • MF/Fendt • Amazone
- Maschio • Case/Gem Sprayers

We specialise in hard to find and obsolete parts so please get in touch as we have new stock arriving weekly - huge savings on RRP

**Looking for a manual? - if so please get in touch**

Tel: 07789 793721 Email: [simon@sps-parts.co.uk](mailto:simon@sps-parts.co.uk)  
Visit: [www.sps-parts.co.uk](http://www.sps-parts.co.uk)



# New to the Market: Bobcat Forklifts and Warehouse Equipment

The logistics market has recently acquired a new brand of forklift trucks: Bobcat. The brand is world famous for an extensive range of compact machines, which are used in construction, the agricultural sector, landscaping, demolition, recycling and many other industries. Bobcat loaders and telehandlers, which can be equipped with attachments such as buckets, grabs, bale clamps, dump hoppers and pallet forks, are often used for material handling and logistics tasks. It is therefore no surprise that products from sister company - Doosan Industrial Vehicle (DIV) - forklift trucks and warehouse equipment - are now part of the Bobcat family. These material handling machines will be produced in the well-known Bobcat colours from 1st January 2024.

The history of Bobcat forklift trucks goes back to 1968 when the first forklift truck was produced in South Korea under the

Daewoo brand. In 2005, the company was taken over by Doosan, after which DIV was founded in 2011 as part of Doosan Infracore. In 2021, Doosan Bobcat took over the company and all of the elements of the organisation. These include two factories in Incheon (Korea) and Yanta (China), where forklifts are produced, and a factory in Lübben (Germany) where pallet trucks and stackers are made. The company is currently active in more than 90 countries.

## Warehouse and Product Inspections

In 1993, DIV started selling in mainland Europe from a location in Belgium. In 2007, the company moved to a warehouse and distribution centre for forklift trucks, warehouse equipment and spare parts in Sint-Niklaas in Belgium. The European headquarters of DIV is also located in Sint-Niklaas, where the sales, marketing, customer service, technical support administration and HR departments are based.

This branch of the company, which has now been renamed Doosan Bobcat Belgium, will undergo a number of changes, involving an investment of approximately two million euros. The offices are being renovated and refurbished in the Bobcat corporate identity, to create a modern and attractive workplace. In addition, the facilities for technical inspections, pre-delivery inspections and service are being expanded and modernised. For example, new lift bridges and a spray booth are being installed. In addition to Sint-Niklaas, DIV has its own sales offices in France, Italy and Germany. In other countries, the company works with importers/resellers.

## Product Portfolio

The Bobcat range for logistics and material handling now consists of various product

lines: a series of diesel forklift trucks with lifting capacities from 2 to 16 ton; a series of LPG forklift trucks with lifting capacities from 2 to 7 ton and a series of electric forklift trucks with lifting capacities from 1.2 to 10 ton. The latter segment also includes a line of electric forklifts with three wheels for light work from 1.2 to 2 ton. The warehouse solutions include pallet trucks, stackers and reach trucks.

During the last LogiMAT exhibition in Stuttgart in Germany, Doosan Bobcat introduced a number of new machines. The new B80NS forklift truck was on display, which is part of a series of electric counterbalanced forklift trucks with lifting capacities of 8 and 10 ton. In addition, two prototypes were on display: the three wheel B18NT electric forklift with a lithium battery and the B30X-7 Plus hydrogen forklift.

## Bobcat DNA

The DIV website states that the company strives to bring simple and powerful machines to the market that offer the driver a lot of comfort and that are also environmentally friendly. These ambitions make it clear that the two companies are a great fit, because Bobcat's principles are virtually the same. Both companies also invest heavily in innovation to develop valuable and reliable products for their customers, so that they can perform their work efficiently and get optimal return on their investment. Thanks to the integration into Doosan Bobcat, DIV can benefit from Bobcat's extensive R&D facilities, a number of exciting machine management innovations, marketing know-how and Bobcat's extensive dealer network, while Bobcat now has a virtually complete portfolio of compact machines.

For more information about Bobcat and its products, visit [www.bobcat.com](http://www.bobcat.com).



# STAMFORD TRACTORS

MILL FARM, WILSTHORPE, STAMFORD PE9 4PE - 5 miles east of Stamford

## USED TRACTORS & VEHICLES

FORD 7910 s4/q VT.....	£POA
JOHN DEERE 6810X4 f / linkage aircon, tidy, x reg.....	£19,750
FORD 7840 x 4 SLE special L reg 6400hrs.....	£POA
FORD 3600 S CAB P reg fitted power steering grass or Ag tyres.....	£POA
ROADLESS 95 lift and linkage.....	£POA
SUPER MAJOR L drive.....	£POA
FORD 5000 pre force, power steering (f reg) v.tidy.....	£POA
D BROWN 990 IMP c/w DB loader power.....	£POA
FORDSON DDN Major c/w Howard reduction box will split ex trencher.....	£POA
HONDA Quad 300 cc.....	£1,795
TURNER YEOMAN of England MK3.....	£14,000
ROADLESS E27, P/P half track.....	£10,500
FERGUSON 20, petrol, re-sprayed, new tyres, ready to rally.....	£1,950
S/H DUNCAN cab to fit 4000.....	£750
10 LEYLAND WEIGHTS ex 285.....	£POA
JOHN DEERE weights - late type.....	£POA
8-10-14 x 45KG WAFER WEIGHTS for New Holland - Ford 10 series.....	£POA
10-40-60 SERIES WEIGHTS and weight blocks.....	£POA
NH 60 SERIES WAFER WEIGHTS 45kg fan.....	£POA
S/H TRACTOR WEIGHTS to fit various makes - phone for price and availability Ford Q cab & safety cab parts, doors, rear windows etc. phone for price & availability David Brown mushroom cab doors £POA	£POA
P.U.H'S to fit - / Super Major's - / Lawrence Edwards conversion.....	£POA
SPOOL VALVES to fit 5000 / 6000 / 5600 / 8100 / 8200 * various.....	£POA
ASSISTOR RAMS for 5000 / 56 / 66 / 76 / 81 / 82 e.t.c. * various.....	£POA
VARIOUS ROLL BARS to fit Ford / Fordson / M.F. and Ferguson £POA	£POA
FRONT LINKAGE to fit most 100 PH tractors.....	£450
HOWARD TRENCHER on rotor pads based on Ford 5000 PreForce.....	£450
CREEP BOX or put back of tractor as Classic Tractor.....	£4,500

## TELEPORTERS & LOADING EQUIPMENT

MASSEY FERGUSON loader to fit 135.....	£POA
HD Manure fork to fit telescopic hydraulic.....	£POA
CHILTERN Toe Tip 1.8m euro 8 bucket.....	£1,150
MCCONNELL 3 POINT Linkage fork lift.....	£750
BROWNS GB900 LOADER, ex Ford 5000 - 6600 - 7600 + ten series.....	£850.00
FARM HAND F12 LOADER to fit Ford 500/6600.....	£750.00
FORD FRONT END POWER LOADER D.A., to fit Ford 4000/5000/7600.....	£475.00
FORD HORNDRAULIC LOADER, c/w 3 spools, Hyd Ram, pipework.....	£295.00
HYDRAULIC LOADER to fit Dexter.....	£375.00

## MUCK / FERTILISER SPREADERS / SPRAYERS

KNIGHT SPRAYER Mounted 18m or 12m electric controls.....	£1,250
VARIOUS SPREADING DISCS to fit Zau Amazone spreaders.....	£POA

## GRAIN

OPICO Dry 575 quiet gas.....	£POA
------------------------------	------

## DRILLS/POWER HARROWS/ AIR DRILL

COUSIN V Form, 5 leg, 500mm centres, 3m working width, Teckneat seeder split box, Opico fert tank (with liquid).....	£14,500
3M ACCORD DA DRILL, with or without power harrow.....	£1,350
KUHN POWER Harrow 3m c/w packer.....	£1,350

CLAYDON SR 3.5m mounted Tyne Drill VT 300mm tine spacing.....	£11,250
Rubber tyre packer.....	£850
Accord DA Power Harrow mounted Drill.....	£850
CARRIER 4M mounted spring tine tram liner. Large hopper.....	£850
MF30 4M disc grain drill, 23 disc coulters.....	£850
PARAMETRE PAN buster tines 12ft manual fold.....	£325
3M FLEXICOIL to fit power harrow Kuhn / Lely.....	£POA
3 & 4 MTR CRUMBLER, ex Kuhn Power Harrow.....	£POA

## CULTIVATION

COUSIN 36" HD Press 4 meter trailed.....	£2,250
SIMBA DISC MK1 3.7 F/C R/C.....	£3,200
SIMBA MK3B 10' F/C - R/C Disc.....	£9,500
NICHOLSON Hydraulic folding spring tine 15ft.....	£450
BROWNS Pan Buster folding cultivator 12/14ft.....	£750
BOMFORD 22' Ridged end toe c/w power track tines and roller.....	£850
8ft mounted chain harrows.....	£850
KONGSKILDE spring tine c/w rotatorates 16ft.....	£950
13T KONGSKILDE VF Vibroflex, 13 tine.....	£1250
KONGSKILDE VF15 cultivator folding frame c/w depth wheels.....	£850
HOWARD 70" rotovator.....	£850
NEW HOWARD 70" rear door to fit rotovator.....	£POA
DOE CULTIVATOR, 7 tine, c/w packer roller, 3m working width.....	£875
9FT MARKSTIG spring tine cultivator.....	£350
12 FOOT BROWNS 3 bar panbuster.....	£550
PARMETER MOUNTED folding frame 7 zig zag harrows.....	£575
TRAILED H/D CHAIN harrows, 12ft wide, 1/2ft dia.....	£475

## HAY EQUIPMENT

SKH Haybob Kuhn.....	£POA
5' Rotary Mower Big B.....	£POA
VOTEX 9' ROTARY topper.....	£850

## PLOUGHS

RANSOME TSR 108, U.C.N 3 furrow plough, c/w depth wheel & transport bracket suit 7000.....	£1,250
BAMFORD MTD 3F PLOUGH model 14/30, c/w disc & skims, ley bodies.....	£395

## MOLE DRAINER / SUBSOILERS

RANSOME Single leg mole drainer with disc coulters.....	£1,750
RANSOME C90 twin leg swivel subsoiler.....	£1,750
RANSOME subsoiler c/w 2 swivel legs.....	£1,050
DOE / COUSINS 2 leg subsoiler c/w depth wheel.....	£650
MOLE DRAINER.....	£550
RANSOME C83B 2 leg subsoiler choice.....	£550-£700
FERGUSON Single leg buster subsoiler, disc sprung.....	£650
COUSINS TOOL BAR c/w single leg mole.....	£POA

## ROLLS

WREKIN Cambridge rolls gang 22" x 15.....	£650
LELY Ringmaster 6 meter hydraulic fold breaker rings.....	£2,750
GRAYS 8' x 30" ballast roll.....	£850
9' FLAT ROLL, 20" dia, mole ballast type.....	£POA
3' x 20" Flat Roll not ballast type.....	£300
FLAT ROLL 4' x 2.....	£POA

## TRAILERS

NEW JPL low loader 19'x5' beaver tail 19 ton c/w ramps.....	£13,200
NEW NUGENT P3116H plant trailer c/w full ramp door 10'3" x 5'3".....	£1250
MARTIN & MARKHAM 6 ton 2 wheel tipping trailer VG.....	£1250
TYE 4 TON high lift grain trailer steel floor.....	£1250

ARCTIC Nootboom 3 axle air hydraulic flip ramps.....	£12,500
PETITE, MARTIN Markham, Harford 3 / 4 ton trailers - various.....	£650
IVOR WILLIAMS T/A 16ft LM166 c/w side mounted HIAB.....	£2,550
crane.....	£650
SHOOT TRAILER 2 single axle sprung 10'x6'.....	£550
EARLY FERGUSON tipping trailer.....	£450
3T TIP CART, steel floor.....	£450
HAYFLAKE transporter trailer.....	£450
Various 2 wheel Tipping Trailers - 3/4/6 ton from.....	£450
4T TRAILER CHASSIS a - Suit use for water tankers ** PRICED TO SELL.....	£450

## WHEELS & TYRES

VARIOUS ROW CROP WHEELS in stock - please telephone for sizes.....	£POA
PAIR OF 124.4/11 x 32.....	£POA
ONE X 18.4-15x26.....	£950
TERRA TYRES 66x43x25, Swop centres.....	£POA
FORDSON MAJOR spade wheels.....	£POA
NEW PAIR 12.4x24 tractor tread.....	£POA
DUAL WHEELS 18.4 x 38 Taurus stocks c/w clamps.....	£400
DUAL WHEELS 18.4/16.9 x 38 16.9 x 30 From.....	£POA
STOCKS DUAL WHEELS 20.8 X 38 c/w Clamps.....	£POA

## COMBINES, HAY, SILAGE, RAPE SWATHERS

VICONACROBAT.....	£150
ADAMS 4 REAR round bale carrier.....	£POA
COOKES FLAT 7 SLEDGE.....	£550
BALE SPIKE to fit JCB Q Fit.....	£POA
VARIOUS BALE SPIKES.....	*CHEAP TO CLEAR
COMBINE MATCO 4' side knife.....	£450
FLAT 8 BALE FORK choice.....	£POA
A Selection of combine side knives.....	£POA
BOMFORD BUCKRAKE.....	£POA
RITCHIE BIG BALE HANDLER JCB Q-Fit as new.....	£POA
MEIJE Flat 8 Sledge.....	£POA

## HEDGE CUTTER

MCCONNELL Finger Bar Swingtrim Hedger (Ideal Leyland hedge) to fit Compact.....	£3,500
---	--------

## MISCELLANEOUS

RANGE ROVER sport electric deployable towbar off 2020 yr model.....	£POA
Very Little use.....	£POA
FORD Super Q cab roof.....	£POA
FORD Q Cab rear windows, roof, door, side window & windscreen.....	£POA
McCONNELL PTO driven saw bench.....	£950
SAGAR LARGE 3 phase Electris circular saw bench & assorted saw blades.....	£650
YAMAHA diesel engine generator on trolley.....	£POA

## VINTAGE/CLASSIC/COLLECTABLES

RANSOME TS 83A 3 furrow reversible, re-con.....	£1,250
DAVID BROWN Albion P.U. V/T pick baler.....	£925
RANSOME TSF200 4F plough c/w full set of discs and skims.....	£1,350
RANSOME TSR103, 3 furrow reversible plough c/w UCN skims & disc HYTO.....	£750
RANSOME TS90, 3 furrow plough, YL bodies 12" furrows c/w kims & discs.....	£POA
DOE TOOL carrier.....	Offers
J.F MS105 wrap around combine harvester 10ft.....	Offers

ALL PRICES ARE + VAT



New Holland TX66 SL Combine  
20ft straw chopper,  
owner driven  
POA



Simba MK3B 10' F/C - R/C Disc POA



New Marston Flat Ballast  
10' x 30"  
roll POA



Kubota Rotavator 1.2m as new POA



Ford 7840 SLE Special



Ford 3600 Power Steering

PHOTOGRAPHS AVAILABLE UPON REQUEST - EMAIL OR POST  
TEL: 01778 560111 • MOB: 07860 336044 • FAX: 01778 560160

Email: [stamfordtractors@btconnect.com](mailto:stamfordtractors@btconnect.com)



# YAMS

**FREE ENTRY  
& PARKING**

**EASY ACCESS,  
GREAT ATMOSPHERE,  
GOOD FOOD,  
FRIENDLY AND  
FAMILIAR FACES FROM  
THE LOCAL DEALERSHIPS**

ALL THE LATEST MACHINERY AND  
EQUIPMENT FOR AGRICULTURE,  
HORTICULTURE, GROUND CARE,  
FORESTRY, PRECISION FARMING  
AND ESTATE MANAGEMENT

**SPONSORS**



**THE YORKSHIRE POST**

**AROUND 250  
TRADE STANDS**



**WEDNESDAY  
7 FEBRUARY 2024**

**YORK AUCTION CENTRE  
OPEN FROM 8.30AM TO 4.30PM**

For latest news, information and list  
of exhibitors please visit our  
website: [www.yams.uk.com](http://www.yams.uk.com)

York Auction Centre, Murton, York, YO19 5GF  
T 01904 489731 • E [enquiries@yams.uk.com](mailto:enquiries@yams.uk.com)

[www.afmmachinery.co.uk](http://www.afmmachinery.co.uk)

[hwhite@afmmachinery.co.uk](mailto:hwhite@afmmachinery.co.uk)

01327 261023 - Option 2



**Attlefield  
Farm Machinery**

Products you rely on  
Prices you trust.



**SPEARHEAD SNIPER**  
offset 225 Flail Mower LH/RH  
available **£6,550.00**



**SPEARHEAD TWIGA T65 Mid**  
Hedgecutter (126) YOM2018  
Workshop prepared  
**£18,250.00**



**SPEARHEAD Multi Cut 650 Pro line**  
Batwing Topper **£28,000.00**



**USED  
SPEAR-  
HEAD  
BATWING**  
toppers  
in stock.  
Workshop  
prepared



**SPEARHEAD  
655 T**  
Hedge Cutter  
MP2 Flail Head  
(129) YOM 2011  
**£13,750.00 ex VAT**



**SPEAR-HEAD SNIPER 250-SHD**  
Flail ex demo **£6,850.00**



**SPEARHEAD SNIPER 250**  
HD offset flail mower  
**£9,950.00**



**SPEARHEAD SNIPER 280**  
HD LH flail mower  
**£6,750.00**



**SPEARHEAD TWIGA LH 600 /**  
MP2 Flail Head (156) YOM 2012  
**£12,250.00 ex VAT**

**ATTLEFIELD FARM, HELLIDON • DAVENTRY, UK, NN11 6GG**

# CASE IH SETS BAR WITH NEW AF SERIES COMBINES

Case IH revolutionised combine technology with the launch of the Axial-Flow, and now they are set to do it again with the completely reimagined new combine family, the AF Series: Case IH's biggest combine ever produced. The new series will deliver on today's grower's need for capacity, speed, precision technology, and simplicity to make up for skilled labour shortages and an ever-present need to deliver more efficient harvests.

"Farmers depend on being able to manage harvest as efficiently as possible and we've upped our game with this next series," said Global Product Leader for Harvesting, Bill Weber, Case IH. "Case IH is the only manufacturer in the industry to offer a six-module single rotor with up to 775 horsepower (578 kW). We're also setting the bar with industry-leading cleaning system capacity and grain tank size. Our AF series provides next evolution in technology and unmatched throughput, ultimately improving productivity for the farmers we serve."

The AF series will boast industry-leading capacity allowing farmers to cover more hectares in less time. The combination of efficient power, increased throughput and larger cleaning and grain handling systems will maximize crop flow throughout the machine. Highlights include:

- More Power: Up to 775hp, 24% more than previous models.
- Larger Grain Tank: Holding up to 20000 Litres.
- Superior Unload Rate: 210 Litres/sec.
- Longer Rotor: 50% more separation to process high yielding crops
- Larger Fuel Tank: A 25% increase in fuel tank size.



● New Cross Flow Plus Cleaning System: 32% larger than previous models.

"This AF series has the ability to streamline operations and increase a grower's profitability," added Weber. "Not only are we delivering on the superior grain quality and grain savings the growers have come to expect from Case IH, we're helping farmers optimise harvest by minimising harvest labour expenses and decreasing the amount of time spent in the field."

Part of the AF series' optimisation comes to life through a suite of integrated technology, which makes operating the AF series combine more intuitive and efficient. Greater control and consistency in harvest are found through tailored visibility in the dual Pro1200 displays, real-time machine automation through Harvest Command and remote diagnostics and fleet logistics through AFS Connect.

"The technology and intuitive nature of the AF series matches the simplicity that Case IH combines are known for," said Weber. "You'll see simplicity covered in how easy it is to clear blockages by reversing the rotor and feeder from the cab to easy maintenance covered through easier access to service points."

The new AF series combines from Case IH couple the world's largest capacity with industry leading technology to deliver a combine series that is unprecedented. Details on the commercial release AF series combines will be announced in 2024.



## OLD 20 Parts Company

**Most Parts for Most Tractors**  
Vintage, Classic & Modern

**T: 01332 792698 | [www.old20.com](http://www.old20.com)**

**Quote WRIGHTS23 to get 5% off your next order!\***

\*Subject to availability. Terms & Conditions Apply. See website for details.

# Visit Nofence at LAMMA to discuss virtual fencing technology

Livestock producers and conservationists can speak to grazing experts and farmers about the opportunities available when utilising Nofence virtual fencing at LAMMA 2024 on Stand 948 in Hall 7.

A global leader in precision livestock management with more than four years of use on UK farms, Nofence uses a combination of GPS, cellular communication, audio signals, and solar power. Using the Nofence smartphone app, virtual fence perimeters can be created and monitored while working with animal behaviour. This allows livestock to graze within set perimeters with no physical fencing.

"When an animal steps over a Nofence boundary, the collars emit an audio cue to warn it of the boundary perimeter. If the animal does not turn around upon hearing the predictable audio cue the collars issue an electric pulse. The collars also track animal location, allowing for data of detailed grazing patterns and animal movement to be viewed. They are also developed with solar panels to ensure long-lasting battery life throughout the grazing season," says John Smout, Sales Manager for Nofence UK. "With Nofence, we train the animals to listen for their fence boundary. So, we are still relying on the animal's senses to stay within the grazing parameter, but it is hearing rather than visual."

## Opportunities for different livestock systems

With over four years of experience in the UK, and over 440 million hours of grazing logged, Nofence has proven to be suitable for both extensive and conservation grazing and intensive rotational systems.

"The technology has proved to excel in a diverse set of applications," says Mr Smout. "Our trial work and customer experience have shown that cattle can be grazed on intensive rotational and strip systems while successfully maintaining tight covers."



Nofence has also been a popular tool for upland producers wanting to maximise land usage and better manage grazing without investing in physical fencing infrastructure.

"It's also a game-changer for farmers and grazers integrating livestock into arable systems, allowing for flexibility in grazing management while significantly reducing labour and infrastructure costs associated with setting up a grazing system on arable land," he says.

To learn about the opportunities Nofence offers, visit the Nofence stand in Hall 7 on Stand 948 at LAMMA 2024. Farmers using Nofence will also be on stand to share their experiences with the technology.

To learn more about Nofence, visit [nofence.co.uk](https://nofence.co.uk)

# Urea alternatives on show at LAMMA to meet new scheme

Origin Fertilisers will be discussing how farmers can navigate DEFRA's Option 4 for spreading urea-based fertilisers when new requirements come into force in England in April 2024. The stand at LAMMA 24 will focus on protected urea options and the financial and environmental benefits when compared with applying straight urea.

Option 4 means growers wishing to spread urea fertilisers beyond 1 April 2024 need to apply urea products coated with urease inhibitors to reduce ammonia emissions. The primary aim of Option 4 is to keep access to urea for market competition but minimise the ammonia losses from volatilisation. Mandy McAulay, marketing

manager at Origin Fertilisers, says understanding the requirements before buying will be essential for nutrition plans.

"Although the change may be seen by some as further red tape, growers should be looking at it as a chance to explore different fertiliser options, and applying a protected urea, that is treated with a urease inhibitor, can increase fertiliser efficiency over urea, spread accurately to 32m, and offer comparable returns to ammonium nitrate (AN)."

Origin's team of six in-house nutrition agronomists will be on stand offering expert advice on Origin Enhanced Nitrogen that is treated with Nutrisphere, a dual-acting



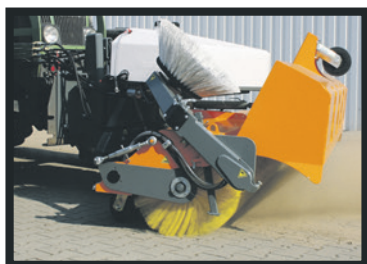
inhibitor that differs from other urease inhibitors on the market. It is a highly water-soluble compound primarily created from fermentation of maize, and, as well as reducing volatilisation, Nutrisphere also acts as a nitrification inhibitor and reduces the risk of nitrates leaching into water. "Adopting this type of nutrient technology will see growers make more from any fertiliser they are willing to apply," says Mandy.

A further part of the display

will focus on improving the quality of grassland using Origin's Sweetgrass fertiliser, which includes sodium to increase the palatability. It has shown increases in meat and milk production from home-grown forage when compared with a typical AN grassland application. Furthermore, a two-year trial reduced nitrogen input by 15% and still registered a 26% increase in total weight gain for lambs.

Origin Fertilisers will be on stand 11.210.

# BEMA SWEEPERS UK & IRELAND



Contact 'Phil the Brush'  
Tel: 01159 630011  
Mob: 07436 272292

[www.bemasweepers.co.uk](http://www.bemasweepers.co.uk)

*a clean product line!*

## RURAL BUSINESS FINANCE SPECIALISTS



01937 222 123

### AGRICULTURAL



Equipment we can help finance:

- |                         |                        |
|-------------------------|------------------------|
| ✚ Tractors              | ✚ All Terrain vehicles |
| ✚ Harvest machinery     | ✚ Planting machinery   |
| ✚ Cultivation machinery | ✚ Drilling machinery   |
| ✚ Irrigation equipment  | ✚ Trailers             |

### HAREWOOD ASSET FINANCE

Auction Finance  
Agricultural  
Ground Care  
Equestrian  
Renewables  
Livestock  
Tax & VAT Liability  
Industrial & Construction

### FINANCE OPTIONS

- Hire purchase
- Refinance
- Variable rate hire purchase
- Finance lease

### RENEWABLES



Renewable assets we finance:

- |                       |                                 |
|-----------------------|---------------------------------|
| ✚ Solar & Wind energy | ✚ Ground & Air source energy    |
| ✚ Biomass projects    | ✚ Combined heat & power systems |
| ✚ LED lighting        |                                 |

[sales@harewoodaf.co.uk](mailto:sales@harewoodaf.co.uk)

Harewood Asset Finance LLP is an Appointed Representative of AFS Compliance Ltd, which is authorised and regulated by the Financial Conduct Authority, firm number 625035. Harewood Asset Finance LLP is a franchisee of Asset Finance Solutions (UK) Ltd. Harewood Asset Finance is a broker not a lender.

# Massey Ferguson previews flagship 9S range at LAMMA 2024

Massey Ferguson will launch its brand-new flagship MF 9S large frame tractor to the UK market when it returns to LAMMA 2024.

After over five years away from the show, Massey Ferguson will showcase its new six-model MF 9S range at LAMMA, which tops out at 425hp. Key features include an updated six-cylinder, 8.4-litre AGCO Power engine, with Engine Power Management (EPM) offering up to 30hp extra for all models, apart from the flagship MF 9S.425, which gets a constant 425hp. The new MF 9S range has the innovative Protec-U design featuring an 18cm gap between the bonnet and the cab to improve operator comfort and allow best-in-class visibility.

William Judge, MF brand manager, UK, EIRE and Middle East, says previewing the new MF flagship tractor at the premiere machinery event in the UK was one of the key reasons for returning. "There has been a high number of requests from both customers and dealers for Massey Ferguson to go back to LAMMA and, with the launch of our new MF 9S range, it was a perfect

time to return. There has been a lot of speculation around the new tractor, and we are incredibly excited to bring it to market in 2024 to further cement our position in the high HP sector."

All models feature a Dyna-VT transmission as standard and are only available in Exclusive spec featuring a Datatronic 5 screen, Multipad joystick and vDisplay A-pillar readout. For the first time, MF will offer a central tyre inflation system, which uses twin 650-litre/min compressors to adjust tyre pressures, helping to reduce soil compaction. Other technology options include MF AutoTurn and Auto Headland.

The stand will feature a 30-year celebration of MF's iconic sloping bonnet design. Originally introduced on the MF 3000 series in 1993, it set new standards for forward visibility for loader and livestock work, with the latest MF 5S range continuing the class leading vision and manoeuvrability offering views to 4m ahead of the tractor and a 4m turning radius.

To mark the occasion, buyers of MF



5S.125 and MF 5S.145 tractors can choose a new 30th Edition spec, which comes as standard with many features including a Visio Roof, FL4121 self-levelling front loader with Softdrive and third service, and eight LED work lights. Driver comfort extras such as a plastic floor mat, a B-pillar phone holder, and 30th Edition decals are included as standard.

On the stand will also be an MF 6S.165 featuring a special spec package, alongside a full range of green and gold harvest products, including MF DM Series mowers and MF 7370 BETA combine with MF 680 Powerflow header.

Massey Ferguson will be in hall 12 on stand 470.

**QUICKFENCER**

**Multi 2000**  
The new Multi 2000 can erect any height of wire up to 3 meters, down to a single strand. It comes with the tilt mechanism and a top link as standard. This machine is the flagship of the range.



Please contact: John Mob: 07966 285240 or Steve Mob: 07931 511090  
www.quickfencer.com • Email johnquickfencer@yahoo.co.uk

## BULK BINS

**Available from  
6 to 28 tons**

**Wanted and For Sale**

**Tel: 07774 737966**

## HANKINS ENGINEERING LTD

Over 30 years manufacturing experience

**Specialists in Contract  
Moling, Manufacture  
and Hire of the...**



**MAIDWELL  
MOLER**

- Single, twin and 3 leg versions available.
- Well proven design beam moler incorporating shear bolt.
- Built to withstand crawlers and large tractors.
- Spares for most molers, including ceramics at competitive prices.

TELEPHONE: 01604 686216 MOBILE: 07973 265378  
www.maidwellmoler.co.uk

## FENCING CONTRACTOR

- POST & RAIL • STOCK, NET AND BARBED WIRE • RABBIT FENCING

Stewardship Scheme work undertaken

Tel. Julian Nugus 01469 - 531137 Mobile: 07850 - 857988

TO ADVERTISE IN



**CALL FRAN ON**

**07764 230515**

# Bunning launches new Lowlander Narrow range and 250 Widebody HBD spreader

G T Bunning and Sons will launch a new spreader range at LAMMA 2024 suited to users seeking accurate, lower application rates of dense products such as lime as well as FYM, chicken manure and compost. The company will also show an additional model in the high-capacity Lowlander Widebody HBD range.

The new Bunning Lowlander 120 Compact Narrow HBD spreader will be on the stand and is part of Bunning's new Lowlander Narrow range. The four new models – Lowlander 120, 120 (Compact), 150 and 150 (Compact) – feature narrower bodies to achieve lower application rates whilst retaining the two 1,100mm spinning discs as standard on HBD machines.

Ben Johnson, UK and Ireland sales manager at Bunning, says the new range offers greater versatility for a wide range of products. "The Narrow spreaders will appeal to users wanting to run wider tyres to reduce compaction but keep within a 3m road width and allows lower applications rates to be applied due to a narrower aperture."

The Narrow range retains the high

build quality associated with Bunning spreaders and features a 1,250mm-wide body compared with the 1,500mm body on standard HBD machines. Especially suited to applying heavy products, a larger floor drive gearbox, increasing torque from 5,000Nm to 8,000Nm, and larger motors on the gearbox to increase torque at low floor speeds have also been added to the range.

To improve product transfer to the discs, the spreaders feature additional floor slats on every other horizontal chain link on the moving floor – standard HBD spreaders feature a floor slat on every third horizontal link. Running wider flotation tyres is a popular factory upgrade and, due to the narrow body, the new range can be fitted with wider 800/70 R38 tyres to reduce compaction and remain under 3m wide. The model on stand is available for demonstration throughout the UK next year and the Narrow spreaders can be ordered now.

Also on show will be an additional model for Bunning's largest Lowlander Widebody range. The 250 HBD is a 25t rated spreader capable of carrying 26m<sup>3</sup> and sits above



the current largest UK machine, the 230 HBD. It features a 200mm longer body, a full chassis construction, and the option to increase carrying capacity to 31m<sup>3</sup> with side extensions for light products such as compost.

**ENVIROTYRE**  
UK LIMITED

**TYRE & TRACK  
DISPOSAL**

[www.envirotire.com](http://www.envirotire.com)

Collection & environmental recycling of agri, truck, industrial, car tyres & tracks. Suppliers of heavy-duty sidewalls for silage clamps.

Collection throughout the UK. PLEASE CALL 0345 331 2747

# JCB PREVIEWS TWO NEW HIGH PERFORMANCE LOADALL TELEHANDLERS

JCB has two new high-performance models in its telescopic handler range, as the company continues to invest heavily in providing the broadest range of materials handling equipment for agriculture.

The new machines will make their UK debut at the LAMMA show, Britain's leading farm equipment, technology and services event, on 17/18 January at NEC Birmingham.

The JCB Loadall 542-100 provides more lift capacity than JCB's current high-lift model, while a higher-powered version of the Loadall 560-80, renowned for its bulk loading and re-handling productivity, will give the machine even punchier performance.

Both new telehandlers will come with JCB's unique AGRI Pro package, now available across the Loadall range, combining a 129kW (173hp) engine with the DualTech VT transmission that provides "best of both Worlds" hydrostatic and powershift drive, resulting in ideal driving characteristics for different tasks across a wide range of speeds.

John Smith, JCB Agriculture Managing Director, said: "Our presence at Agritechnica and the LAMMA show enables us to emphasise JCB's continued investment in the broadest range of materials handling products for agriculture, and in particular to showcase these two significant forthcoming additions to the Loadall range."

## Loadall 542-100 AGRI Super / Xtra / Pro

The all-new JCB Loadall 542-100 will complement JCB's current high-lift telehandler – the 536-95 – with a half-tonne, or more than 16%, increase in maximum lift capacity of 4.2 tonnes.

Built with new chassis and boom designs enabling a number of performance and productivity enhancing features to be introduced, it will also lift heavier loads throughout the boom envelope and to the 9.8m maximum lift height.

In highest-specification AGRI Pro form, the Loadall 542-100 will be significantly more powerful thanks to its 129kW (173hp) engine and also faster with JCB's unique 50kph DualTech VT transmission installed, enabling large farms and straw contractors to work more efficiently and more productively.

Yet the Loadall 542-100 will have the same footprint as the current model, so it will be just as nimble for routine yard work – filling a feeder and cleaning out a cattle yard, for example – while providing greater performance for loading and off-loading bale trailers and building tall storage stacks.

In common with other AGRI Pro versions of JCB's Loadall handlers, the new high-lift model will also benefit from the durability of an upgraded drivetrain and a high-output 160-litre/min hydraulics package.

The AGRI Pro specification will be available alongside AGRI Super and AGRI Xtra configurations, so the 542-100 will also be available with 112kW (150hp) and 97kW (130hp) versions of the JCB DieselMAX engine and a 40kph version of the JCB DualTech VT transmission, which provides initial movement by hydrostatic drive for the most precise control before automatically switching to direct-drive powershift at faster speeds.

## Loadall 560-80 AGRI Pro

With its 129kW (173hp) JCB DieselMAX engine, the Loadall 560-80 AGRI Pro will become the most powerful and best-equipped 6 tonne capacity telehandler in the



## Loadall range.

The 560-80 is currently available to AGRI Super 97kW (130hp) specification with a four-speed JCB Powershift transmission and 140-litre/min hydraulics, and in AGRI Xtra form with 112kW (150hp), a 160-litre/min pump and JCB's unique DualTech-VT hydro/powershift transmission.

The new AGRI Pro version will have a 40kph version of this transmission and 160-litre/min hydraulics – plus 15% more power and 15% more peak torque at 690Nm from the 4.8-litre JCB engine.

This will further enhance the machine's ability to dig into stockpiles of grain, bulk fertiliser, livestock manure, and so on, and discharge large volumes into a spreader, trailer or grain wagon for optimum productivity.

# Safer, higher capacity pump units debut at LAMMA

Slurry management specialists Tramsread will debut a range of uprated and improved engine driven pump units (EDPU) at LAMMA in January 2024.

The EDPU's feature a new chassis that is 200mm wider and 400mm longer than previous models. This will enable extra pipework and valves specified by users to be accommodated, and larger fuel tanks with capacity increased from 375 litres to 500 litres which will reduce the need for daily refilling.

The trailed EDPU models also benefit from uprated sprung axles and larger 355/60 R18 tyres and wheels. This makes the units safer when travelling at higher road speeds.

A further new option of air or hydraulic brakes and LED lights on the class leading

contractor units have been incorporated to improve safety for both operators and the public when the units are in transport.

New, upgraded remote control systems offer further safety measures. Operators can choose from ultra high frequency (UHF) or GSM remote systems which feature improved screen graphics, repeater stations and automatic sponge launchers.

Customers will be able to choose the colour of their pump unit and there are also changes beneath the surface, with new profiles and preformed brackets that will make assembly a simpler process regardless of whether Bauer, Doda, or Cri-man pumps are fitted.

Visitors to LAMMA will find the new EDPU's and a range of Tramsread's slurry handling equipment on stand 350 in Hall 1.



# Andrew Guest Ltd

The Kuhn Power Harrow Specialist

**OPENING TIMES:**  
Monday - Friday 8am - 5pm  
Saturday - By appointment



Recon power harrows from £6,450



**Quick fit 2!  
Blade Holder  
Conversion Kit**  
to suit most models of Kuhn  
**£165/rotor**



**Maxi Packer  
roller kits**



Vertical folding markers to  
suit Kuhn, Maschio etc £950  
Pre emerge kits from £795  
3m recon Kuhn Accord  
combis from £13,550  
4m recon Kuhn Accord  
combis from £14,550

Refurbished Kuhn  
Power Harrow &  
Accord Seed Drill  
Specialists

**62 tonnes of  
genuine Kuhn  
tines sold  
last year!**

**Genuine  
Kuhn tines**

2 bolt fix.....£10.95  
Q fit 2.....£11.95  
Non genuine  
tungsten quick fit  
tines.....£37.50



Recon DA drill c/w  
Suffolks.  
3m from £6,950  
4m from £7,450



**Wheel track  
eradicators to suit  
Kuhn Maschio  
KRM**



Tel: 01636 700608 • Mob: 07833 535891  
Email: [simon@andrewguest.co.uk](mailto:simon@andrewguest.co.uk) • [www.andrewguest.co.uk](http://www.andrewguest.co.uk)

# RUSSELLS



LEADERS IN AGRICULTURAL, GROUND CARE AND CONSTRUCTION EQUIPMENT.

**VISIT OUR WEBSITE TO FIND OUT MORE...**  
**[russells.uk.com](http://russells.uk.com)**

**HUNDREDS OF ITEMS IN STOCK: [russells.uk.com](http://russells.uk.com)**

# Fendt celebrate at Lammas 24

Celebrating its 50th year in the UK, Fendt will demonstrate its largest range of tractors, machinery and technology at Lammas 2024. The Ideal 10T combine with Superflow 12.2m header, Rogator 655 sprayer and a wide range of grassland machinery will feature alongside technology including the new ErgoSteer joystick and FendtONE offboard system, all under the new brand promise, 'Leaders Drive Fendt'.

"By working with our customers and dealers we have refocused our efforts to deliver new products that help them pioneer more sustainable farming methods. Farming systems are changing, and we want to provide machinery that can drive the agricultural efficiencies needed today and in the future," explains Fendt's Richard Miller.

A wide range of grassland machinery including the Former rake, Lotus tedder, Tigo

forage wagon and Katana 850 forage harvester will feature on the Fendt stand.

"Our grass kit offer has grown significantly and is a popular choice for operators looking to improve forage quality. Whilst engineering advancements have been made to improve operating efficiencies, we are also using Lammas to demonstrate how FendtONE can help gather vital data to improve decision-making," says Mr Miller.

FendtONE on board is not new, but the technology now features in all tractor models and the offboard office software has been updated for 2024 to gather more data and measure the efficiency of every task. This, Fendt says, enables users to reduce fuel consumption,



cover the ground faster and make incremental improvements.

Fendt will also be supported by AGCO Parts and Customer Support, to showcase a wide range of genuine accessories including the ErgoSteer joystick which can be retrofitted to new and existing tractors. It is mounted on a new adjustable armrest and reduces operator fatigue during loader work by making movements easier, quicker, and more precise.

A clever wheel-weight

lifting device will also be debuted. It enables operators to remove weights of up to 1250 kilos in the field safely and quickly to help minimise compaction on soft soils or improve fuel efficiency by carrying less weight on the road.

"Lammas is the flagship event in the UK farming events calendar, and we intend to demonstrate how Fendt is developing the technology and machinery to help farmers lead," concludes Mr Miller.



## AGRICAST TO LAUNCH ITS LATEST PRESS ROLL RING AT LAMMAS 24

The UK's leading supplier of replacement wearing parts will unveil its latest press roll ring on Stand 320 in Hall 20 at LAMMAS 24.

Agricast, which has been supplying Cambridge roll rings, disc blades, subsoiler wear parts and custom-made packers for over 35 years, will use January's event to launch its 560mm lightweight ring (PRR-560-LW).

The PRR-560-LW is the fourth product to feature in Agricast's press roll ring range, which was introduced in 2018 and also includes the 610, 710 and 610-LW.

Designed to work with the Simba Mounted Xpress machine and retrofittable to other cultivators such as the McConnell Shaker, the new ring has a 560mm diameter, making it slightly larger than the original and is also slightly thicker to give the ring greater durability and longevity.

"Our new 560mm lightweight ring completes our range of press roll rings," says William Robinson, managing director. "Our PRR 610 and 710s have been incredibly well received since they were introduced in 2018. Since then, we have sold more than 150 tonnes of this style of ring and are only starting to see our first customers ordering replacement rings – that's how well they're

made and how long they last!

"The new 560mm lightweight ring, which will be on stand at LAMMAS and is in stock now, has been developed in response to enquiries from people wanting us to complete our range, so we're confident it will be a popular product."

William spent 18 months developing Agricast's first two press roll rings, which fit Double Press and CultiPress packers.

The Agricast PRRs are manufactured from heat-treated Boron steel, which, because they work more passively than a disc blade, will offer greater longevity than cast ring wheels. Like the previous version, Agricast's PRR is a closed wheel, preventing stones from jamming in them, which can happen with cast rings. Agricast has also improved the design by adding small cutaways to the outer edge, which improves traction and the wheel's ability to shatter or fissure hard, dry soil.

"As well as being around 30% cheaper than the original, Agricast's Press Roll Ring offers greater durability, being 6mm thick rather than 5mm. With 20% more metal in these rings to start with, we are offering a longer-lasting product that will not wear

through as quickly on the shoulders," adds William.

One farmer and large-scale contractor in South Yorkshire using a 5m Watkins Quad Till is pleased with how Agricast's PRRs have performed: "In 2018, we fitted Agricast's 610 PRRs instead of original Simba blades. The last set of Simba blades covered around 9,000 to 10,000 acres before we needed to replace them. The first set of Agricast PRR blades did around 12,000 acres, and the second set, which is on the machine now, is wearing equally well. Both sets have withstood impact damage from limestone far better than the OEM parts."

For more information about Agricast, its new PRR 560-LW and its wider range of wearing parts, please visit Stand 320 in Hall 20 at LAMMAS or [www.agricast.net](http://www.agricast.net).



# SUPPLY YOUR CUSTOMERS WITH

# Wrights

## FARMING REGISTER

## ABSOLUTELY

## FREE!



### THERE'S NEVER BEEN A BETTER TIME TO STOCK WRIGHTS FARMING REGISTER

Farming has seen many changes over the past decade during which time Wrights Farming Register has stood firm and continued to offer a valuable service to the industry when many other publications have fallen by the wayside.

### SIGN UP TO BECOME A STOCKIST TODAY!

Whatever the type or size of your business - Wrights Farming Register is a great tool to increase regular footfall in to your premises, and to provide your customers with added value every month.

### POINT OF SALE PACKS AVAILABLE

We're also offering new and current stockists the opportunity to take a Wrights Farming Register point of sale promotional box to display your papers in effectively. To become a stockist contact us via any of the methods below and tell us the name and address of your business, the main point of contact and how many copies you'd like to take (a minimum of 20 copies per month).

**Wrights Farming Register**, a bi-monthly mart for the farmer, agricultural dealer, plant machinery dealer and contractor, has been described as 'the Bible' when it comes to products and services related to the farming industry.

**Wrights**  
FARMING REGISTER

**CONTACT:** Sue Fixter  
**CALL:** 01507 524496  
**EMAIL:** [subs@wrightsregister.com](mailto:subs@wrightsregister.com)

**Wrights**  
FARMING REGISTER

# LAMMA debut for new push-off Dump Trailer

On display for the first time at LAMMA will be the unique new Hi-Spec PD20 Push-off Dump Trailer that uses the well proven push-off technology originally designed for the company's larger Kompactor range of push-off trailers.

Unlike conventional tipping dump trailers, the PD20 Dump Trailer, which has a carrying capacity of around 20 tonnes, is offloaded using a hydraulically operated moving floor type headboard that cleanly and efficiently clears the load from the body once the up and over tailgate has been raised. The moving headboard is based on the same mechanism that was developed for the larger Kompactor push-off trailer range and has a push-off capacity of 28,000kg.

By avoiding the need for a hydraulic tipping ram and hinge points, the centre of gravity is lower than for a conventional dump trailer. This has the benefit that it enables the Dump Trailer to be safely used and offloaded on slopes or at an angle with less risk of the trailer tipping over, or in buildings and situations where there are height restrictions. Where necessary, it also makes it very easy to offload and spread a load

while on the move. Once the trailer has been emptied and the tailgate closed, the operator can move off while the headboard is retracting, so avoiding the delay while a tipping trailer is lowered, and as a result turn around times are reduced.

K36 Kompactor push-off trailer Also on display will be a K36 Kompactor Push-Off trailer. The Kompactor features a hydraulically operated headboard powered by a triple hydraulic ram system, that can be used to compact material such as woodchip and grass or maize silage, so increasing the load carried by up to 40%.

The headboard can also completely empty the trailer in as little as 30 seconds. Because the load is pushed off and so avoids the need to tip the trailer body, the Kompactor is ideal for use in areas that conventional tipping trailers cannot access.

By using a push-off mechanism and due to its low centre of gravity, all the inherent risks posed by using a tipping trailer are avoided, such as striking overhead power lines or trailer instability when tipping on soft and uneven ground.

Hi-Spec 3000 TS-R tanker Also on display will be the



latest addition to the Hi-Spec vacuum tanker range. The TS-R is available in a range of capacities from 2,000 up to 4,000 gallons. The tanker body is fully supported and is carried on a commercial tandem-axle, fitted with 710/50-R26.5 tyres with semi-recessed mudguards.

The combination of narrower width but lower rolling resistance tyres to keep soil compaction to a minimum and the semi-recessed mudguard design has the benefit that overall width and height are reduced, making the TS-R a more nimble tanker and ideal for use where operating space is restricted.

As standard, the Hi-Spec TS-R is fitted with a sprung drawbar with swivel hitch and the barrel is made from 6mm British steel and incorporates internal baffles and anti-implosion rings. Also standard is a powerful Jurop pump and the TS-R can be specified with a wide range of filling options.

The 3000 TS-R on display will be fitted with the 7.5 metre wide Hi-Spec Dribble Bar, which folds down to just 2.55 metres for transport, but spreading options also include the Hi-Spec Trailing Shoe applicator, which is available in working widths of 7.5, 9.0 and 10.5 metres.

## Slugs, straw and weed-seeds - new 3-in-1 HE-VA Top Strigle straw harrow

OPICO will launch a significant new addition to its HE-VA cultivations line-up at LAMMA in January – the Top Strigle straw harrow.

As many farmers continue towards reduced or no-till crop establishment, OPICO has seen demand grow for a fast, cost-effective implement to spread straw evenly across the field to assist with drilling and slug control as well as aiding in the battle against problem grass weeds.

Working directly behind the combine,

the Top Strigle's five rows of heavy-duty harrow tines spread trash and create a micro tilth to prompt a flush of growth. Equally as important as the need to generate a chit of weeds, the harrow disturbs slug eggs exposing them to sunlight and destroying the next generation of mollusc pests before they emerge.

Ideally the Top Strigle is worked at a slight angle to the combine's direction of travel, carrying a 'wave' of crop residue to establish

an even coverage of straw and chaff across the whole field. This in turn makes for easier trash flow for subsequent tillage and drilling operations.

Hydraulic tine angle adjustment means it is possible to vary the harrow's aggressiveness on the move as conditions change. A Stocks seeder unit is an option for those that plan to use the

Top Strigle as a tool to establish cover- and catch-crops.

Available in working widths of 3m to 10m, the new HE-VA straw harrow is designed to be operated at speeds of 15-25kph. Not only does this make for fast work rates, it also generates multi-directional oscillation from the 16mm diameter long-fingered spring tines, creating a fine surface tilth ideal for weed seed and volunteer germination.

But working at such speeds will inevitably put strain and stress on any machine. To counter this HE-VA's engineers have used a heavy-duty central ladder-frame with dual hinge points and fold rams front and rear. This robust design means the Top Strigle is set to last the test of time.

Power requirement for the straw harrow is based on the need for an effective working speed. As an example, a 6m Top Strigle would ideally be mounted on a 155-180hp tractor.



**WWW.ELECTRICCABLE.CO.UK**  
Tel: 01733 205123

Rubber H07 RN-F, SY & YY Cables, Plugs & Sockets  
Large Stocks - Low Prices - Next Day Delivery  
All Major Cards and Paypal accepted  
Buy online at [www.electriccable.co.uk](http://www.electriccable.co.uk)  
or call 01733 205123 or  
email [sales@electriccable.co.uk](mailto:sales@electriccable.co.uk)



## SANDBAGS



Fabric material: Jute, a natural fibre.

Size: 14" x 26" (35.56cms x 66.01cms).

Weight: 5.3616oz (152grams) approximate.

20" (50.80cms) double string at mouth

3" (7.62cms) vent at mouth.

Supplied in a bundle of 100 sandbags.

Please contact Sathiyar for price and delivery period.

Email – [kaetyafricagroup@yahoo.com](mailto:kaetyafricagroup@yahoo.com)



Lincs based,  
will travel

## Hedge and Tree Planting



- Supply and planting of trees, shrubs, and hedgerows
- From filling gaps to full new hedgerows
- Single trees to large new woodlands
- Grant schemes catered for

Call Adam: 07970 433470 Email: [adam@farmlinc.co.uk](mailto:adam@farmlinc.co.uk)

[www.farmlinc.co.uk](http://www.farmlinc.co.uk)

**Wrights**  
FARMING REGISTER

## ADVERT INDEX

MJP Supplies .....	P2	Envirotyre.....	P17	Max Last Containers .....	P26
Sharnford Tractors.....	P5	Andrew Guest.....	P19	National Cladding.....	P26
P&D Engineering .....	P7	Russells .....	P19	Enrogen .....	P26
Tractors UK.....	P8	FarmLinc.....	P23	Multi Industrial Doors .....	P26
FarmPlus .....	P8	Electric Cable Company....	P23	Vale Livestock.....	P27
TAG Insulation .....	P8	Kaety .....	P23	BOM Agriquipments.....	P27
Alchemy Business Finance .	P9	S J Stanberry.....	P47	John C Knight.....	P28
SPS Parts .....	P9	Harold Woolgar Insurance .	P47	Butterfield Plant Sales.....	P28
Stamford Tractors.....	P11	Nick Young Tractor Parts...	P47	Cooks Midlands .....	P28
YAMS.....	P12	Covertect Agricultural Covers ...	P47	Wilson's Farm Machinery ..	P29
Attlefield Farm Machinery .	P12	.....	P47	Bruce Selby .....	P29
Old 20 Tractor Parts .....	P13	Chandlers Farm Machinery	P48	M&B Sacks.....	P29
Howard Marshall .....	P15			Thunderpole .....	P29
Harewood Asset Finance ..	P15			A K Elliott.....	P30
Quickfencer .....	P16			Beltec .....	P30
Hankins Engineering.....	P16			Country Workshops.....	P30
S J Price .....	P16			Agricultural Tyres &	
Julian Nugus.....	P16			Wheels.....	P30

### CLASSIFIED

Blueline Buildings .....	P25
Portal Power .....	P25
Unbrako Precast Concrete	P25

# SUBSCRIBE FOR FREE\*

6 issues delivered to your door for only £15

BROKERING THE DEALS THAT MAKE BRITISH AGRICULTURE GREAT  
WINTER EDITION • NOV-DEC 2022

## Wrights FARMING REGISTER

### INSIDE THIS ISSUE

Brokers' listings, p37  
Auctions & events, p14  
Landscape news, p16  
MMS preview, p20  
Livestock news, p22



JCB's Fastrac iCon to debut  
at Midlands Machinery Show



**ELECTRIC: HOFTRAC HAS A BATTERY ONBOARD, p8**  
Weidemann's Hoftrac 1190e is all about electric power



**TRAXTER 6x6: THE GO-ANYWHERE SOLUTION, p18**  
The functionality of a six-wheel drive vehicle in an SSV



**LIVESTOCK NEWS: DAIRY PROFITS RISE, p22**  
But cash remains king, according to our analysts

- All the latest farming news
- Show previews and reviews
- Brokers' machinery for sale

### HOW TO SUBSCRIBE\*

**Call:** 01507 524496 to pay by credit or debit card

**Email:** Send name, address and phone number to [subs@wrightsregister.com](mailto:subs@wrightsregister.com) and we will invoice you. Your subscription will begin with the next available issue once paid

**Post:** Send name, address, phone number and a cheque payable to Wrights Farming Register Ltd to: Customer Services Dept, Wrights Farming Register, Suite 3/4, Stanhope Hall, Boston Road, Horncastle LN9 6NF

\* ALTERNATIVELY, GET A FREE DIGITAL SUBSCRIPTION @ [WRIGHTSREGISTER.COM/SUBSCRIBE](https://www.wrightsregister.com/subscribe)

# Wrights

FARMING REGISTER

# Classifieds

To advertise call Fran on 07764 230515

## BUILDINGS

### STEEL BUILDINGS



#### HEAVY DUTY STEEL BUILDINGS

- ◆ Extremely cost effective ◆ Workshops/Garaging/Storage
- ◆ Widths from 20ft to 70ft ◆ Unlimited Lengths
- ◆ Buildings to BS 5950 ◆ Finance available

**BLUELINE BUILDINGS**

**Tel: 01709 578333**

**PORTAL POWER**  
NEW & PRE-USED BUILDINGS

Please quote WFR when calling for 5% Discount

01728 861444 [www.portal-power.co.uk](http://www.portal-power.co.uk) [info@portal-power.co.uk](mailto:info@portal-power.co.uk)

40mx17mx5.6m frame and purlins.....	£28,000
90mx60mx8.7m frame and purlins twinspan.....	£185,000
75mx60mx8.7m frame and purlins twinspan.....	£160,000
84mx25.5mx8.5m 275'x83.6'x27'10".....	£110,000
72mx22.3mx8m 236'x73'x26'3" New purlins and side rails....	£69,500
78mx35mx6m Ideal equestrian arena.....	£85,000
42mx36mx7m with 120mm insulated roof.....	£76,000
60mx28mx6m with 40mm insulated roof.....	£85,000

Other sizes available

**INDUSTRIAL, AGRICULTURAL AND EQUESTRIAN**

**Wrights**  
FARMING REGISTER

To reach over 33,000 potential readers every month,  
call Fran on 07764 230515 or  
email [sales@wrightsregister.com](mailto:sales@wrightsregister.com)  
[www.wrightsregister.com](http://www.wrightsregister.com)

**Wrights**  
FARMING REGISTER

## UNBRAKO PRECAST CONCRETE



**-50% HAULAGE ON FULL LOADS !**

**LEADING MANUFACTURERS  
OF HIGH QUALITY  
CONCRETE PANELS**



**HEIGHTS : 1M, 1.2M & 1.5M**  **THICKNESS : 100mm, 150mm & 180mm**

**FREE TECHNICAL ADVICE & MEASURING SERVICE**

**WWW.CONCRETEWALLING.CO.UK 01949 860985**

# MAX LAST CONTAINERS

**CONTAINERS  
FOR SALE  
OR HIRE**

**new and secondhand**



**ALL SIZES OF SHIPPING  
STORAGE AND  
REFRIGERATED CONTAINERS**

**Tel: 01394  
387728**

**Fax: 01394  
388826**

**Mobile:  
07860  
413994**

**maxlastcontainers@gmail.com**

**Nationwide  
Service**

## BUILDINGS

### ROOFING & CLADDING SHEETS

PLASTISOL - POLYESTER  
INSULATION - PURLINS  
METRE COVER  
'ONDULINE STOCKISTS'

**DIRECT FROM THE MANUFACTURER**



Unit 6, Capelhendre Ind. Estate,  
Nr. Ammanford, Dyfed SA18 3SJ

**Telephone: 01269 831869**

**Fax: 01269 831870**

**www.national-cladding.co.uk**

**Wrights**  
FARMING REGISTER

### CLASSIC LAND ROVERS

BRITISH CLASSICS  
HERITAGE MOTORS  
PARTS 1948 to Date  
RETAIL TRADE EXPORT  
SPECIAL PROJECTS  
RESTORATIONS  
MANUFACTURING

**Country Workshops, Risegate,  
Nr. Spalding, Lincs PE11 4EZ  
Tel/Fax: 01775 750223  
www.british4x4centre.co.uk**

## GENERATORS

**ENROGEN**  
POWER GENERATION SYSTEMS

**+44 (0) 1759 307070**

**mail@enrogen.com**

**www.enrogen.com**

**Blenheim Road,  
Pocklington Ind Est,  
York. YO42 1NR**

**Sales | Repair | Spare Parts**



### POWER YOUR FARM – Tractor Driven Generators

Three-point fitting system | Quick Connection |  
Emergency power supply in minutes | Suitable for  
most tractors on the market | Compatible with Cat  
1 or Cat 2 Linkage | Auto voltage limit to preserve  
tractor engine | Robust and durable design

*Ideal for – Grain Drying, Refrigeration Systems / Cold Stores, Milking Parlours, Pumping,  
Operations and More.*

### Brand New

**150kVA Generator Set Featuring:**

- Perkins Engine
- Leroy Somer Alternator
- Deep Sea Electronics Controller
- 2mm Zintec Acoustic Canopy
- 440L Bunded Base Fuel Tank



**£21,505.57 + VAT**

**MADE IN  
BRITAIN**



**Industrial Doors Ltd**

**multi**

**Tel: 01455 891929**

**M I D Business Centre / Sapcote Rd, Burbage, Hinckley LE10 2AU**

## Nationwide Service

**http://www.multiindustrialdoors.co.uk  
sales@multidoors@hotmail.co.uk**

- Galvanised Roller Shutters
- Plastisol Colour Coated Shutters
- Insulated Roller Shutters
- Sectional Overhead doors
- Steel 10 Point Locking/ Security Personnel Doors
- Steel Fire Exit Doors
- Fast Acting High Speed Doors
- Dock Leveler/ Loading Bay Installations
- PVC Strip Curtains
- and many more products



**INDUSTRIAL DOOR Specialists  
Manufacture . Service . Installation**

## LIVESTOCK

## VALE LIVESTOCK

MOORE'S YARD, HEMINGBY LANE, HORNCASTLE,  
**ROXELL** LINCS LN9 5PN **PLASSON**.co.uk

- BULK FEED BINS •
- PIG & POULTRY FEED SYSTEMS •
- DRINKER SYSTEMS •

Contact:

R. Moore 07957 568 955  
 TEL: 01507 522386 FAX: 01507 522061  
[www.valelivestock.co.uk](http://www.valelivestock.co.uk)

**Wrights**  
 FARMING REGISTER

## MACHINERY FOR SALE

## Welcome to B.O.M Agriquipment

Professional Agriculture Equipment  
 in Scunthorpe

When you need high class agricultural equipment to rely on look no further than our services here at BOM Agriquipment Sales and Fabrications.

Farming Equipment Tractor Attachments Bespoke Machinery Refurbished Machinery

Follow us to get the latest updates.



**BOM**

AGRIEQUIPMENT  
 SALES &  
 FABRICATIONS

TEL: (01724) 783887 FAX: 01724 784242  
 BoM AGRIEQUIPMENT SALES

Email: [bomagriquipment@hotmail.co.uk](mailto:bomagriquipment@hotmail.co.uk) Web: [www.bomagri.com](http://www.bomagri.com)

## WANTED

## WANTED



Looking for Vauxhall Brava, Izuzu D-max,  
 Izuzu Rodeo, Ford Ranger, Toyota Hilux,  
 Chevrolet, Mitsubishi L200,  
 Pick Ups In Any Condition

PLEASE CALL DARREN ON  
**07775 998628**

**Wrights**  
 FARMING REGISTER



# SHARNFORD TRACTORS LTD



## See our advert on page 5



**Wrights**  
 FARMING REGISTER

To reach over 33,000 potential readers every month,  
 call Fran on 07764 230515 or  
 email [sales@wrightsregister.com](mailto:sales@wrightsregister.com)  
[www.wrightsregister.com](http://www.wrightsregister.com)

**Wrights**  
 FARMING REGISTER

MACHINERY FOR SALE

# JOHN C KNIGHT

www.jcknight.co.uk  
Email: johncknight@btinternet.com



Bomford Hawk 6.5T  
Pro Cut 1.2MT HD



Fiat 70-90 with Tanco  
978 Loader



McHale V660  
Baler 3 Belt

Deutz Agrottron K90 Quickie Q45 Loader MF675

FOREST FIELDS, FOREST LANE, BELTON, LEICESTERSHIRE LE12 9TN  
PHONE JOHN KNIGHT 01509 503296 - MOBILE 07850 936030

FOR SALE

## VOLVO FL10

Twin drive 8 wheeled  
recovery vehicle



All in working order but needs  
some cosmetic repairs

C/W underlift with axle forks  
also

Hydraulic boom extension  
Garwood hydraulic driven winch  
Twin rear hydraulic h/d spades  
Hydraulic stabiliser legs  
Lockers

Available with all relevant chains,  
blocks, d/shackles & tools

A further selection of long haul  
26mm wire ropes & h/d chains

Contact Tom 07885 276850



**HAREWOOD**  
**ASSET FINANCE**

01937 222 123

sales@harewoodaf.co.uk

**RURAL  
BUSINESS  
FINANCE  
SPECIALISTS**



**BPS**

Butterfield Plant Sales



Hitachi ZX135 LCN-6, 2018



CAT 428E, 2008



JCB 535-125 HI-Viz, 2014



JCB 150X HD, 2023



JCB 3CX Contractor, 2021



Terex PT3000, 2011



JCB VMT 260-120, 2016



Kubota KX080-4, 2016



J.Lewis Hooklift Trailer, 2019

Telehandlers	Backhoe Loaders	Other	Excavators
2021 Manitou MT625H	2018 JCB 3CX Contractor	2022 Herron HDT L.21	2023 Kubota KX027-4
2017 JCB 540-140	2017 JCB 3CX Contractor	2019 Ammann ARK26	2012 JCB 8018 CTS
2015 Manitou MT732	2008 JCB 4CX Sitemaster	2014 JCB Fastrac	2019 CAT 302.7D
2014 JCB 533-105	2002 JCB 2CX Streetmaster	Vermeer V-5750 Trencher	2018 Hitachi ZX130 LCN-6
2014 JCB TLT 35D	2000 JCB 3CX Sitemaster	Terex 1T Dumper	2008 JCB JS220 LC
2014 JCB 535-140	1998 JCB 3CX Sitemaster	2011 Thwaites 9T Dumper	2017 JCB 8026 CTS
	1994 JCB 3CX Sitemaster	2010 Terex TV800 Roller	2016 Kubota U17-3
			2015 JCB JS130 LC
			2013 Hitachi ZX33U

Miscellaneous

01274873758

info@butterfieldplant.com

www.butterfieldplant.com



**Cooks**  
— MIDLANDS LTD —

Agricultural and Construction  
Machinery Sales and Service

IN STOCK NOW!

TF42.7CS-CVT 2018 4978 hrs  
TF42.7CS-140 2020 4289 hrs  
P32.6 PLUS 2011 4475 hrs  
P32.6 2006 6150 hrs

**MERLO**

P27.6 PLUS NEW!  
TF38.10CS-145 NEW!  
TF42.7CS-145 NEW!

300.9 Excavator NEW 10002412  
301.5-05A Excavator NEW 11002223  
301.6-05A Excavator NEW 11002395  
302.7 07A Excavator NEW 11002373  
309-07 DLR Excavator NEW 11002477



Ktwo DUO 12T Muck Spreader  
Spread-A-Bale Midi Straw Spreader

Vicon RV5216 PLUS Round Baler  
Kubota BV5160 Round Baler

We now offer the full line up of Kioti!



Horsepool Grange,  
Elliotts Lane,  
Stanton  
Under Bardon,  
Leicestershire,  
LE67 9TW

e sales@cooksmidlands.co.uk

w cooksmidlands.co.uk

t 01530 249191



Knowledge,  
Experience  
& Reliability.

## MACHINERY FOR SALE

# Wilson's Machinery Sales

## Tractors and Wheeled Machines

**2020 Messuri** tracked diesel high tip 500kg dumper. Electric start. As new condition.....£6950  
**2010 Messuri** tracked diesel high tip 500kg dumper. Electric start. Decent working example.....£450  
**2010 Doosan RX60R** 6 ton, zero tail swing excavator, good rubber tracks and blade, 6000 hours.....£17,500  
**1984 Ford 6710** 2wd bubble cab, trima loader, 1 owner machine from new, UK tractor not an import, 4800 hours from new, crisis cross engine fitted, very nice thing.....£11,950  
**2010 CASE JX80** 4 wheel drive Trima loader, euro headstock, 2000 hours.....£22,500  
**2007 TEREX/BENFORD** 6 Ton Swivel Skip Dumper Roll bar, cummins engine, low hours, works well.....£7950  
**2017 Manitou MLT 635-130PS**, 6m Telehandler, cameras, pick up hitch, 80% tyres, Manitou service contract maintained.....£39,750  
**2021 New Holland T5 105.4** wd 1700 hours, front weights, 40k gear-box, left hand forward electric forward reverser, Air Con.....£39,975  
**0000 David Brown 996** 2wd High cab, straight original thing.....£3950  
**2022 Yanmar SV26 2.7** ton digger. 100 hrs only from new. Full set of buckets.....£21,950

## Trailers and Livestock Trailers

**2006 Rolland 64** Livestock trailer, hydraulic lowering, decent example of an older trailer.....£6450  
**2016 WARWICK TB12M** grain trailer. 16 ton gross. 12 ton capacity. Lovely condition.....£11,950  
**2008 JPM** Urban Low loader, tandem axle. Approx 36ft. Hydraulic folding ramps. Tested 2024.....£9850  
**2020 Bracken** 21ft tractor drawn livestock trailer, dividing gate, tarpaulin, hyd brakes, led lights, alloy ramp.....£9950  
**2018 AW trailer** 28 ft tandem bale trailer, super singles, lovely condition, tool box, bumper bar.....£7900  
**2021 Nugent** 12ft cattle livestock trailer, light use, ready to use.....£5975

**2022 Cosnet 5.2M/17ft to 6.2m/20ft** tractor drawn cattle trailer, sprung loaded loading ramp, hyd brakes, optional divider gate. Unused. As new condition. From.....£8975  
**2022 Cosnet 6.2m/21ft** optional dividing door. Unused. As new condition. From.....£11,950  
**0000 20FT TANDEM** axle bale trailer, very nice, fixed axles.....£1800

## Pickups and vehicles

**2016 Fiat Ducato**. 3500kg tipper. Drop sides. Tool box. 50000 miles. Choice of two in stock.....£8950  
**2019 Ranger Limited** 4x4 Double Cab in grey, 42,000 mil, 2.0 twin turbo, towbar, nice example.....£19,950  
**2022 Landrover Defender** 110, 5 door, 5 seat, 300 ex. Full spec car. 5000 miles. Unblemished.....£79,850  
**2011 Landrover Discovery** 3.0 TDV6 Auto, Commercial with rear seat and window conversion, very nice.....£8950  
**2016 Landrover Discovery** 3.0 TDV6 "Landmark", black, 7 leather seats, full spec car with towbar, 100k.....£18,950  
**2006 Man TGL 12-180** 12 ton, alloy body hinged beaver tail, use as beaver or flat bed, sleeper cab, air con, manual.....£5950  
**2017 Mercedes Sprinter** 314 long wheel base van, white, excellent runner, ready to use.....£10,950  
**2018 Mercedes Sprinter** 314 New Shape Medium wheel base van in blue, air con, manual.....£14,950  
**2013 Mercedes Actros** 1842 Low Ride, 4x2 full air suspension, full width Streamspace cab, only 300k.....£19,950

## Car 4x4 derived trailers

**0000 Brian James** 5m/16ft tilt back car transporter with electric winch.....£3950  
**Brian James A4 Transporter Trailer** 2600kg, 16ft.....£3500  
**Dale Kane** 16 ft Low Loader, beaver tail plant tri axle trailer, with electric winch, nice condition.....£4950  
**Ifor Williams** 12 ft twin axle, general purpose fixed sided trailer, with sprung loaded ramp.....£1975

## Machinery

**2012 Kverneland** Static bale wrapper, autocut, autotilt, remote control operation from loading machine, good order.....£4450  
**0000 Swing trim hedge cutter**, 3 pont linkage mounted. Very good condition.....£2975  
**0000 Post thumper**, category 1 linkage, would suit compact tractor or any cat 1 tractor.....£850  
**MX BUCKET GRAB** 6 ft, lovely condition.....£1400  
**Two 10ft Flat Grass Roller**, nice condition.....£950  
**Tandem Fleming Flat Grass Rollers** 10 ft.....£1950  
**Lucas Castor 60R** Straw Chopper, swivel chute, handles silage and straw, only used for straw, 2013.....£7950  
**Major Topper** fully offset, trailed, folding, 12ft approx cut, 540 PTO.....£7950  
**Opico 6M harrows** Optional Seeder Box, good condition.....£5950  
**ALO Quadragrip**, Trombone bale handler, Euro Brackets, piped ready for use.....£1450  
**ALO Round Bale Handler** removeable tubes, little used.....£1200  
**KRM Spinner** 3 ton capacity, nice condition, not average, very nice.....£2950  
**4 in One** Tractor loader Bucket, Euro Brackets.....£2950  
**Muck** grabs choice of 3, all very nice cond, EURO brackets.....£995  
**Loader Buckets** Euro brackets, selection.....£2950  
**Silofarmer** Twin pic 2 Bale unroller, euro brackets or 3 point linkage detachable headstock and forks, left or right feed.....£3950  
**Round bale Slice**, net retention, Euro brackets, nice condition.....£2950  
**KW Root Bucket** 8ft, very nice condition, euro brackets, the best on the market.....£3950  
**Full Set JCB 3CX Buckets**, unused condition.....£2950  
**Acrobat** Hay Turner, to clear.....£2950  
**Fleming 3M Grass Slitter**, with concrete weights, little used.....£2950  
**McHale** Soft Hands Bale Squeezer, euro brackets, nice condition.....£975

## Viewing by appointment



Tel: 07860 608050

Email: sw@wihltd.com

www.wilsonsmachinerysales.com

## SERVICES

# M&B SACKS LIMITED

Industrial / Agricultural Sacks  
 Paper, Polythene, Woven  
 Polypropylene & Hessian.  
 IBC'S / Tonne Bags, Woven  
 and Knitted Nets

AVAILABLE FROM STOCK OR BESPOKE

The Old Mill, Allington Lane,  
 Foston, Grantham, Lincs. NG32 2JR  
 Call us on 01400 281384  
 Email: sales@mandbsacks.com  
 www.mandbsacks.co.uk



## Bruce Selby & Son

Volvo L60H Loaders  
 for sale

Pallet Forks / Toe Tips /  
 GP Buckets

Visit our new website

Tel: 07768 670083 /  
 01302 882233

email:selvol@btinternet.com -  
 www.bruceselbyandson.co.uk

## KEVIN JOHNSON CONTRACTING

Established for over 34 years

Specialising in:

• GPS Satellite Guidance

• Fertiliser Spread from (12m-36m)  
 • Other Work Undertaken  
 • Lime Spreading • Drilling • Silage  
 • Latest GPS Technology  
 • Maize Drilling  
 • Mowing with Triple Mowers

VARIABLE RATE SPREADING  
 OF FERTILISER & LIME

www.kevinjohnsoncontracting.co.uk



Call For Enquiries:

STAMFORD

(01780) 782924

MOBILE: 07860 608825

WE ARE HAPPY TO HELP!

# THUNDERPOLE

# CB RADIO

visit: www.thunderpole.co.uk

To reach over 33,000 potential readers every month,  
 call Fran on 07764 230515 / 01323 849890 or

email Frances.Taylor2@btconnect.com

www.wrightsregister.com

## Wrights FARMING REGISTER

## MACHINERY FOR SALE

# A. K. R. ELLIOTT FARM SERVICES LTD

www.akrelliottfarmservices.co.uk

Wood Lane, Gotham, Notts

OFFICE 0115 9831359

Mobile: 07860 271912

email: aelliott.farmserv@btinternet.com

## NEW AND DEMO MACHINERY

Special out of season deals with Big savings on List prices on all brand new in stock Vicon Machinery listed!!

VICON Anex 464 4' 6" Rake List £11861.00 Pro Line H/D One only NET £6750.00

VICON Extra 124 Rear Mounted Plain Disc Mower

VICON Extra 224 Rear Mounted Plain Disc Mower

VICON Extra 628t Rear Mounted Mower Conditioner

VICON Fanex 604 6 mtr Tedder

VICON Anex 724 Twin Rotor Rake

VICON Extra 632 Mower Condition, Steel Tines

VICON Anex 464 Proline 4.6mtr Single Rotor Rake

VICON Fanex 524 Compactline 5.2mtr Tedder

2 years warranty on vicon machinery subject to terms and conditions, finance deals available on request subject to status, terms and conditions apply.

FLEMING 3 Mtr Grass Slitter.....£2,200.00

NEW H/D Tractor Mounted 8" Post Hole Borer, PTO Driven.....£1,650.00

NEW H/D Tractor Mounted 6" Post Hole Borer, PTO Driven.....£1,450.00

All out of season prices in stock

## TRACTORS

CASE CF350D 2wd Tractor £5500.00

FORD 4600, power steering, pvh, Bubble cab, floor gears.....£POA

FORD 3600, No cab.....£4250.00

ISEIKI 2160 compact tractor.....£2,200

MF 6465 55 REG 6900 hours.....£20,000

CASE 885 spare or repair drives & runs ok.....£1,800

## TELEHANDLERS AND DIGGERS

N H LM425A 2005 Power Shuttle. 7040 hours.....£16950.00

MANITOU 626 Hrs 8100.....£10,950

## MOWERS, TEDDERS, RAKES AND WRAPPERS

CLAAS VOLTO 740 hours 6 Rotor Tedder

STIGA Park Royal, front mounted ride on mower.....£1,200

KUHN FC243 Mower, Lift Control.....£1000.00

KUHN FC2800 Mower Conditioner.....£1200.00

CNH/KONGSKIDE GXS 280SP mower conditioner.....£POA

KV 7515 Bale wrapper for spares or repairs.....£500

OPICO Hyd fold Grass Harrows.....£POA

VICON CM168 Drum Mower.....£1,200

POTTINGER 2600 plain disc mower 2017.....£POA

WESTMAC JF Trailed Mower Conditioner.....£4,500

## BALERS

VICON RV5216 SC14 Variable Round Baler, Registered brand new Jan 23, 2000 bales List

Price £54500.00.....£27000.00

## USED MACHINERY

WEEKS 8 Ton Tandem Axles.....£1750.00

FERABOLI Power Harrow 3mt Packer.....£1250.00

BRENDON Bowser Trailed H/D Pressure Washer, Yanmar Diesel Engine, Electric Start, Choice of Two.....£1650.00

FENDT Pick up Hitch, Vgc.....£750.00

DAVID THOMAS post knocker.....£300

KUBOTA 6'6 H/D Topper VGC.....£1200.00

RSL 170 Rotavator for small tractor.....£800.00

OPICO flail mower 2.2 mtr H/D.....£950

MAURTORI MT40 5ft Flail Topper, 2020 Model Year, Little Use.....£POA

RECO 3MTR Power Harrow c/w Packer Roller.....£1,500

BROWNS Hydraulic folding grass harrow, 5m, VGC.....£3,800

BEMA 8" Mounted Sweeper Bucket & Tank.....£950

LANDQUIP 24MTR Mounted Sprayer, Fully Electronic, C/W Control Box.....£2,000

FOLDING WING End tow 9MTR Cultivator (Simba Type) VGC Requires 200hp.....£2,950

McCONNEL 512, 3 Point Linkage Digger C/W Ditching Bucket.....£1,550



Fast Moving Genuine Vicon Parts Kept in Stock on Site! Electric Fencing Equipment From Basic to Professional Ranges in Stock. Visit and Like our Facebook Page @AKRElliottfarmservices for Special offers and Promotions

## SERVICES

### REPLACEMENT POTATO WEB INSERTS

For most types of machines



SERVICES TO AGRICULTURE & INDUSTRY

### SEED SHEETS

Save Time, Save  
Labour, Save  
Money

Call or email for more  
information:

Beltec (Market Rasen) Ltd

01673 844181

enquiries@beltec.co.uk

## TYRES

### CLASSIC LAND ROVERS

BRITISH CLASSICS  
HERITAGE MOTORS  
PARTS 1948 to Date  
RETAIL TRADE EXPORT  
SPECIAL PROJECTS  
RESTORATIONS  
MANUFACTURING

Country Workshops, Risegate,  
Nr. Spalding, Lincs PE11 4EZ  
Tel/Fax: 01775 750223  
www.british4x4centre.co.uk



### AGRICULTURAL TYRES & WHEELS LTD BOSTON

- Specialised wheel applications
- Floatation specialists
- Rowcrop wheel assemblies
- Stock dual wheels new/used
- Wheels and centre disks
- Wheel modifications
- Second hand & part used
- Part exchange considered

Contact Colin Sims

mobile: 07831 805080


tel: 01205 460081


sales@agriculturaltyresandwheels.com  
www.agriculturaltyresandwheels.com

# Wrights Broker Service


The safe and reliable way to buy and sell machinery and equipment

Wrights Farming Register offers farmers and contractors a unique service through its team of brokers. They are the 'men in the middle' who give an impartial opinion on the items of machinery they handle on behalf of their clients. The brokers, who currently cover an area stretching from the Scottish borders to the South Coast, can save farmers time and money when it comes to buying or selling anything from a combine harvester to a cattle trough. In these security-conscious days, they also provide a discreet alternative to a public farm dispersal sale and can help farmers avoid the tax pitfalls these can cause.





**Shaun van den Bos**  
Tel: 01652 618221  
Mob: 07850 978188  
shaunvandenbos@gmail.com  
www.shaunvandenbos.co.uk



**Robin Sparrow**  
Tel: 07831 886601  
robinsparrow@btinternet.com

**CONDITIONS CATEGORIES**

EXCELLENT ..... Full working order, bright and undamaged paintwork, low usage for year.  
 VERY GOOD ..... Mechanically sound, will go straight to work, little wear for year.  
 GOOD ..... Clean and tidy, mechanically good, may require service or minimal repair.  
 AVERAGE ..... Complete unless stated, normal wear and tear for age, may need some repairs.

*The descriptions are provided as a guide only and relate to machine condition when inspected by the broker*

# WANTED

Contact the appropriate broker if you have any of these items that you would like to sell - they already have customers waiting for you! To locate the appropriate broker, using the area number at the top of the list, see map and contact details on previous pages.

**1**

Bale Trailer 25 -30 ft Tandem axle.  
6M Horsch Drill.  
Weaving Drills.  
Small Square baler Good.  
Clear Span buildings Various sizes.  
Good Vaderstad 4 or 3M drill.  
Tool Carrier Suit Cat 95e Crawler.  
Suburu MV pick up Spares or repairs.  
4wd Bonser Rough Terrain Fork lift.  
Binder Knotters.  
Ford 3000 or 3600 with Ford Cab.  
2wd MF 2000 series tractor.  
Pellet Extruder for small pellets.  
Diesel PTO Drier.  
3 Point Linkage Bomford Hedgers.  
Articulated Telehandler.

MX T412 loader Brackets NH6020.  
10 Series Ford 2wd Tractor Super Q Cab.  
Feed Barriers.  
Beet Cleaner Bucket.  
Opico Vari tith.  
13ft New Holland Combine with A/C Cab.  
360 Diggers 1- 10 ton.  
Moore Uni drill ( Box type).  
4 - 5m Press with Leading tines and DD rings.  
Old beet drill.  
Merlo Grain pusher.  
Fodder beet cell wheels for Web seeder.  
Valtra 8450 + Front Linkage & PTO.  
MX Bale Spike 7000.  
JD Telehandler.  
5 F Kverneland Autoreset plough No 28 Bodies.  
340/65 R38 & 480/65R24 Jd Wheels & tyres.  
Hyd drive front mower.

3 Row SP Sprout harvester.  
3.3m Simba Cultipress.  
Small Volvo Loading Shovel.  
Simba X Press with ST Bar.  
Small Telehandlers, JD, Merlo, JCB.  
6 Row Beet Drill & Hoe.  
Beet Cleaner with Stone release trap.  
4 -5M Press with Tines & DD rings.  
Ford 6810 111 2wd with Air Con.  
110 Irrigator, hydraulic drive.  
Potato Graders for export.  
1000 -1500 gallon slurry Tanker.  
Ford 5610 / 6410 / 6610 / 6810 III or 11 Tractor 2wd.  
KRM / Sulky 4M Maxi drill.  
Case IH Loader Tractor ish 80HP 4wd.  
MF 399 With 12/12

Shuttle box.  
39" Diameter Flat roll.  
Beet Cleaning Feed bucket.  
Amazon Spreader with weighcells.  
6ft Power Grab suit loader.  
Aerzen Blower.  
Choc Bloc Laterals.  
John Deere 120 - 150 HP Tractor.  
120FT of Steel grain tunnel.  
Kuhn Or KV 4-5F Autoreset plough.  
14.9 R 46 rocrops Fit MF tractor.  
Cat D4C 2024 Direct start model.  
Single Row potato hoover.  
Moore Uni drill (Box type).  
Cat D4.  
Small Outdoor Silo.  
5 - 6m Hedgers.  
New Holland 8055, 8060 or TX 32 With A/C Cab.

Simba 4.6m Cultipress.  
Vaderstad Rexius 650.  
New Goodyear 18.4 R38 tyre.

**2**

Kuhn 4mt Power Harrow.  
40 to 70 hp Tractor with Front Loader Must be a tidy tractor.  
140hp to 150 hp Tractor with loader must be 50k.  
County Crawler with or without 3 point Linkage. Must be in good working order.  
Kubota Compact 4x4 Tractor must be in good working order.  
SIMBA 6mt Double Furrow Press.  
Massey Ferguson 500 Drill, 4mt, End Tow, Disc coulters. Must be in good order

## BUYING AND SELLING THROUGH THE REGISTER

- Equipment advertised in the register will normally be located in the area of the representative whose telephone number is shown at the end of each lineage advertisement.
- Call the telephone number accompanying each machine entry.
- Ask any questions about the machine - all equipment is inspected by the Regional Register Sales Representative.
- Arrange to view the equipment to satisfy yourself on its condition and suitability.
- Effect payment (in Pounds Sterling) by doing a deal through the Regional Register Sales Representative, prior to collection (no commission payable on purchases).
- Discuss your requirements with your Regional Register Sales Representative - he may be able to locate equipment through the 'WANTED' section of the register.
- Contact your Regional Sales Representative (see UK map) to discuss equipment you wish to sell and arrange a viewing.
- Charges are £24 plus VAT for each item valued and entered on the register for three months (3 Register publications).
- Commission charges are negotiated prior to advertising equipment - so you can calculate your net return.
- No sale - no fee. Commission is payable only when an item is sold during the 90 days contracted period.
- All enquiries are handled by the Regional Register Sales Representative who will normally accompany potential buyers to inspect equipment.
- The Regional Register Sales Representative completes all necessary paperwork leaving you free to run your business.

## GENERAL TRADING AND CONDITIONS OF SALE AS APPLICABLE TO THE REGIONAL SALES REPRESENTATIVES

1. The Regional Sales Representative shall act as the agent for the seller and is not responsible for any default by the seller.
2. Goods are sold with all faults, imperfections and errors of description. Buyers should satisfy themselves as to the condition of the goods in question. Any statement written or otherwise made by the Regional Sales Representative is a statement of opinion and every person should rely on his own judgement as to all matters affecting the goods.
3. No warranty is given or implied by the Regional Sales Representative nor is any warranty of conditions made by persons representing the Regional Sales Representative.
4. All goods shall be paid for in full on or before collection/delivery. Ownership title will remain with the vendor until full and final payment (including VAT where applicable) is received to the satisfaction of the vendor and the Regional Sales Representative.
5. Commission agreed between vendor and Regional Sales Representative shall be due to the Regional Sales Representative by the seller or owner of the goods in question - immediately the goods are sold within the contract period and monies exchanged accordingly.
6. The seller/owner of the goods in question as described shall indemnify the Regional Sales Representative against all liabilities or claims made by the purchaser (or his servants/agents) loss or damage incurred and shall warrant that he is the true owner.
7. The seller/owner together with the Regional Sales Representative acting on his behalf, shall also warrant that he does not deal as a consumer within the Unfair Contract Terms Act 1977.
8. These conditions of trading shall be governed by and in accordance with the law of England.

### ALL PRICES EXCLUDE VAT

**IMPORTANT NOTICE:** Each of the Regional Register Sales Representatives is an independent trader in respect of his area set out on this page (including website). The owner, and publisher of this publication, Kelsey Media, is not connected with such Regional Register Sales Representatives and accepts no responsibility to persons dealing with such Regional Register Sales Representatives whether in negligence or otherwise and does not enter into any contractual liability with any purchaser or other persons dealing with the Regional Register Sales Representatives.

## 1 AUGERS

**S10430 6 INCH TRANSMATIC** Grain auger appx 46

feet long with Carriage fitted with castor wheels and 3 phase motor **Good condition** ☞ Shaun 07850 978188

**S10513 LAW DENIS** trough auger 6 inch painted with 4 top inlets in 2.5m sections. 7m long in total. Presently suspended appx 2m up **Very Good condition** ☞ Shaun 07850 978188

**S10457 2017 ASTWELL 6 - 35 6 Inch 35ft long grain auger**, PTO driven transmatic type with pristine spout and bottom cage. 2 standard wheels. Perfect **Excellent condition £2,700** ☞ Shaun 07850 978188

**S10394 IDEAL MAYRATH 6 Inch Transmatic Auger**, on trolley, single wheel each end. C/w 3 phase motor and bottom guard. Appx 28ft long. **Good condition £450** ☞ Shaun 07850 978188

**S9957 BRICE BAKER 18ft 4.5 Inch Straight Auger** c/w 2.2Kw 3 phase motor. Tidy little auger **Good condition £200** ☞ Shaun 07850 978188

**S10164 RECO Transmatic 4.5 inch auger** c/w 2 wheels and 5.5HP 3 phase motors Appx 27 ft long **Good condition £300** ☞ Shaun 07850 978188

**S10508 LAW DENIS 6 Inch Straight Auger**. C/w 2.2 Kw 3 ph Motor and Stand on end. Appx 20 - 22 ft long. Tidy Auger used inside but through a wall **Very Good condition** ☞ Shaun 07850 978188

## 2 BALERS AND BALE HANDLING

**S9914 LAURENCE EDWARDS** Bale picker. Fitted 2 of 850mm by 110mm tubular pickers hydraulically adjustable to nip the bale without damage. JCB brackets **Good condition** ☞ Shaun 07850 978188



190 Square baler, fitted load sensing hydraulics, in good working order, regularly serviced appx 85000 bales. Reliable baler, last service 1500 bales ago. Option on various spares. **Good condition £10,950** ☞ Shaun 07850 978188

**S10270 BROWNS 40 Bale Mounted 3 point linkage squeeze type bale carrier** appx 2.6m wide and 1.8m tall. Double acting ram opens and closes onto bales. **Good condition** ☞ Shaun 07850 978188

**S9773 LSM WR 5000F Hydraulic 3 point linkage compactor** for compressing waste cardboard & plastics. Makes a bale of 80 x 90 x 120 cms. Fitted with 2 spools to operate alongside **Very Good condition £5,500** ☞ Shaun 07850 978188

**S8591 BROWNS Juggler Flat 8 Bale Sledge**, hydraulically operated to follow conventional small baler. Choice available **Good condition** ☞ Shaun 07850 978188

**S10188 COOK** Flat 10 Trailed traditional type bale sledge, like the flat 8 but with folding wings for transport which accommodate the 10 bales. Repainted blue **Good condition** ☞ Shaun 07850 978188

**S9900 2003 MASCUS 1800 Mounted Round bale wrapper** for stationary field operation. Can use 750 & 500mm Rolls of wrap. Done appx 200 bales a year. **Good condition £1,200** ☞ Shaun 07850 978188

**S10423 HESSTON** Various 4900 Parts. Also suitable for MF 190 balers. Including needles, panels, stuffer fingers, chamber ram, pick up auger, stuffer chamber guard, lower door panel, crank, stuffer break, bottom twine tensioners, fingers, needles. **Good condition** ☞ Shaun 07850 978188

**S10409 TRENONA** Twin Bale Squeezer, 3 pole hydraulic grab to pick up 2 wrapped bales. Fitted Euro 8 loader brackets. **Very Good condition** ☞ Shaun 07850 978188

**S10473 2004 ORWAK 3800** Free standing waste material baler. Powered by 3 phase electrics. Not used lately but OK when last in use. **Average condition £1,750** ☞ Shaun 07850 978188

**S10471 2022 LSM**



V50F Free standing 3 point linkage Waste material baler, steel tying, powered by tractor hydraulics and 12v system, Will turn waste plastic, cardboard and tyres into saleable bales. New & unused. **New condition** ☞ Shaun 07850 978188

## 3 BEET HARVESTING EQUIPMENT

**RS1391 C T M**



950 RS Beet Cleaner Loader With Dutze Deisel engine starts on the button. Hydraulic Fold, Hopper Extension Double Chain Link cleaner web, Twin Brockiemer unloading web, in use this autumn **Very Good condition £6,500** ☞ Robin 07831 886601

**S10397 TERRY JOHNSON** Todd Mk V1 Cleaner loader with recent Electric start Lister L series engine, legs extended to improve load height. Good Rod link bottom web and Continental unloader web. Straight & Tidy **Good condition £2,750** ☞ Shaun 07850 978188

**S10146 HOUSEHAM 12 Row Front mounted beet hoe** c/w 4 blades per head and depth wheels. Plus Rear mounted wheel eradicator toolbar. **Good condition £500** ☞ Shaun 07850 978188

**RS1578 TODD** Cleaner Loader 2 wheeled trailed. All Brockiemer Webs, Diesel Engine Electric Start, Picking of Table. Ready to go to work. Ideal for Fodderbeet Located Nr. Newmarket More pictures on request **Good condition £3,250 o.n.o.** ☞ Robin 07831 886601

## 4 BUILDINGS/STORES

**S10054 MILD STEEL** Mezanine type platform. 15 ft by 14ft 6" frame in 6 ins I section mounted on 7 legs made of 80mm Box section (2.4m tall). Chequer plate deck with railings round 45 ins high. Platform splits with widest section 9 ft 6 ins for transport. Suit indoor or Gantry outside. Choice of 2, one still up, one dismantled ready to load. **New condition £5,000 each** ☞ Shaun 07850 978188

**S10276 ETA 0.55 Kw roof mounted fan** appx 60cms by 50cms Diameter. Single phase **Good condition** ☞ Shaun 07850 978188

**S10456 STEEL 72 by 40 FT I Section steel building** frame with lattice frame roof covered with box profile roof sheets on timber and angle iron. (Screwed on with techscrews) 10 inch by 6 inch Stations appx

20ft tall. 12ft apart Plus 3 Bay lean to on one side 20 ft wide. Buyer to dismantle **Good condition** ☞ Shaun 07850 978188

**S10316 STEEL BUILDING 40 by 167.5 ft** mostly framework but can include large quantity of sleepers used as walls and some roofing sheets. 11 bays 12ft 6ins wide with 12 by 5inch stations all appx 18ft tall. Plus 2 15ft bays with 8 by 5 stations. Buyer to dismantle in Lincs **Average condition Offers** ☞ Shaun 07850 978188

**S10275 CLARKE** Floortec 350 electric pedestrian floor sweeper c/w dustbox and side suction. Appx 65 cms wide. **Good condition** ☞ Shaun 07850 978188

## 5 COMBINE HARVESTERS AND EQUIPMENT

**S10156 CLAAS** Side Knife Hydraulically driven with 1.3m cutterbar, ex Lexion combine **Good condition £400** ☞ Shaun 07850 978188

**RS1558 1989 CASE I H**



1660 axilflow combine, I H engine, Only 2095 hrs from New. Only one owner from new. C/w Straw copper & Droningberg 16ft Header with P U reel and lifters. Not been use for 2 harvests due to Farmers ill health. (now deceased) Ready to go to work. More pictures on Request. Located Nr Milton Keynes **Good condition £4,500 o.n.o.** ☞ Robin 07831 886601

**S10440 1984 JOHN DEERE**



1075 14ft cut Combine Harvester in Good working order fitted Strawchopper and SG2 Air con cab. Plus Bed Trolley. 28.1 - 26 drive tyres, 18 inc track grip rears. Recent concave and feed elevator. Rare I owner driver combine **Very Good condition** ☞ Shaun 07850 978188

**S10491 JT ENGINEERING** Side Knife Bolt on electric 12v type. C/w Frame for John Deere 818 header. **Good condition £300** ☞ Shaun 07850 978188

**S10377 1979 CLAAS**



Dominator 96 Combine with Hydro gearbox and Turbocharged Merc engine. Plus Straw chopper and chaff spreader. Done 3471 hours. 60% 23.1 - 26 tyres and 12.5 - 18 rears, 15 Ft Header available on flat bed trolley. Very Straight & tidy example of top spec combine in its day **Good condition** ☞ Shaun 07850 978188

## S10530 2002 CASE IH



CT 5080 24ft Cut Straw walker combine (Red TX68) with Self Levelling Shoe on Goodyear 800/65 32 drive tyres and 405/70 R20 rears. C/w air conditioned cab, Strawchopper and bed trolley. Showing 4212 Engine hours, 3403 Harvest. Straight combine done little since serviced. Good To Go! **Good condition £26,000** ☞ Shaun 07850 978188

## S10529 NEW HOLLAND



TX 36 20 ft cut fixed shoe combine harvester. C/w Air Conditioned cab, Strawchopper & Bed Trolley with towbar on combine. Sound 30.5 32 drive Tyres & 16/70 R20 Rears. Hydrostatic drive with 4 gears. Clean Ford 678 engine showing 4370 hours. **Good condition £10,950** ☞ Shaun 07850 978188

## RS1591 1992 MASSEY FERGUSON



38 combine harvester. C/w 20ft Power Flow Header (Droningberg) Valmet 240hp Engine, Tyres 85% good. Front 650-75 R32, Rear 500-60 22.5 in good working order. Used this harvest. Located Nr. Grantham. More pictures on request **Good condition £11,000 o.n.o.** ☞ Robin 07831 886601

**RS1583 MATROC** Rape Side Knife to Fit John Deere 1166 Combine. Not used for two years. Pictures on request. Located Tonbridge Kent **Good condition £750** ☞ Robin 07831 886601

**S10105 NEW HOLLAND** 13ft header quick attach type to suit early 8000 series combines. C/w mechanical reverser, stone hump, lifters, side knife, spare knives and bed trolley **Good condition** ☞ Shaun 07850 978188

## RS1552 2013 JOHN DEERE



C670i. C/w 630 R 24ft Cutt Header. Engine Hrs 2496, Drum hrs 1911, Air Con, Autvec 260o Screen SF 3000 Reciever GPS, Straw Chopper also Zurn Rape header, with Twin side knives. Very clean and all serviced. Ready to go to work. Can be seen working this harvest. Located Nr Crowland **Excellent condition £65,000 o.n.o.** ☞ Robin 07831 886601

## 6 COMMERCIAL VEHICLES AND EQUIPMENT

**S10520 MITSUBISHI** hardtop canopy to suit 2006 - 2014 L200 Animal pick up body. All Glass including rear lifting window and sliding side & front window. Painted Black **Average condition £250** ☞ Shaun 07850 978188

**S10531 2017 ISUZU** D Max Blade Twin Cab 4 wd pick up in Black. Manual Gearbox, Leather Seats only 63,000 Miles. Fitted Roll top with Roll Bar and Tow bar. Tidy Truck available now **Very Good condition £16,000** ☞ Shaun 07850 978188

## 7 CRAWLERS AND EQUIPMENT

### S10392 2005 AGCO



Challenger MT 765 Rubber tracked Crawler, with very good tracks and autosteer ready. Appx 8350 hours. Very sharp machine. Kept under cover **Very Good condition £50,000** ☞ Shaun 07850 978188

### S10304 MF



154C Lightweight Crawler on Good 12" tracks with Full cab, 3 point linkage, weight frame and PTO. Fully repainted with new seat cover. Showing 4977 hours. Starts up straight away **Very Good condition** ☞ Shaun 07850 978188

**S10522 INTERNATIONAL** BTD 6 Crawler Tractor. C/w Hydraulics, PTO, Drawbar & lights. (No linkage) Repainted and overhauled by RH Crawford & Sons. **Very Good condition** ☞ Shaun 07850 978188

## 8 CULTIVATION EQUIPMENT

**S9904 FARM FORCE** 1.5m Simple Front Single cast iron ring press. Slight steerage. **Good condition** ☞ Shaun 07850 978188

**S10412 KONGSKILDE** Vibroflex mounted 4m Cultivator (3m plus 2 folding half meter wings) Broad topped heavy spring tines with good reversible points **Good condition £800** ☞ Shaun 07850 978188

**S10303 KVERNELAND** Kultisvans 5.3m Manual folding cultivator, 3 rows of c tines with std reversible points. 6 depth skids. Good apart from paintwork **Good condition** ☞ Shaun 07850 978188

**S10051 FARM FORCE** trailed folding press fitted 2 rows of cast rings and leading tines. Folds up on one side to match HR 46 discs. Appx 4m working width **Very Good condition £2,500** ☞ Shaun 07850 978188

### RS1546 SIMBA



Top Tilth 7-2mt seed bed maker. Front leveling board, double row of pig tail spring tines, large Paker roller, followed by single row of pig tails, followed by smaller Paker Roller. Really good working order. Only used on Fernland. Dry Stored. For sale due to semi retirement. Located Near Peterborough **Very Good condition £8,500 o.n.o.** ☞ Robin 07831 886601

**RS1547 SIMBA** Double Press 3-5 mt front one row of fixed loosener tines followed by twin pressed atee packer rollers, hydraulic transport wheels and end tow draw bar **Very Good condition £4,500** ☞ Robin 07831 886601

**RS1458 FARMFORCE** front mounted press 3 point linkage furrow press. All rings sound. Pictures on request **Good condition £500 o.n.o.** ☞ Robin 07831 886601

**S10222 2005 KVERNELAND** CTS 4.5m Trailed cultivator, 4 10/5 65 - 16 swivel wheels, Angled discs, 430mm. 13 sprung A shared legs in 2 rows. 2 x 550/60 - 22.5 Tyres. 7 Subtiller legs, levelling boards and packers. **Good condition £3,950** ☞ Shaun 07850 978188

**S10487 LEMKIN** 2M Tubular Crumbler rollers for Cultivator. Each crumbler 1.95mm by 0.6m. Hardly used. C/w mounting frames & Bearings **Very Good condition** ☞ Shaun 07850 978188

**S10136 ARMSTRONG AND HOLMES** Pressure Harrow 5 Section hydraulic folding frame harrow with curved teeth fitted reversible points. Appx 5.5m working width. **Good condition £600** ☞ Shaun 07850 978188

### S10518 2013 HORSCH



Terrano 3.5 FX 3.5m Stubble cultivator with 12 Curved tines fitted with 12 Inch A shares (Alternative available). Adjustable manually for depth mounted in 3 rows of 4. Followed by 10 angled scalloped discs 17.5 inch diameter. Followed by DD style packer. Little used **Very Good condition £8,500** ☞ Shaun 07850 978188

#### **S10407 2013 GREAT PLAINS**



DTX 300 3m mounted disc cultivator with DD packer at the rear, 2 rows of angles discs and 5 subsurfaced legs with Spalding Flat lift bottoms. Later Green livery **Excellent condition £14,750** ☞ Shaun 07850 978188

#### **RS1461 GANG ROLLS**



5m trailed Ring rolls 3m Center & 2 1m pups. Located Nr Spalding. More Pictures on request **Good condition £1,250 o.n.o.** ☞ Robin 07831 886601

#### **RS1505 SIMBA X PRESS**



4.6m trailed Culti Press Fixed Leading tines 2 Rows of Angling Cutaway Discs Followed by Pressed steel presure Wheels & Hydraulic transport Wheels. In Excellent order. More pictures on request. Located Nr Leamington Spa, Works. **SEEDER UNIT NOT INCLUDED Very Good condition £12,500 o.n.o.** ☞ Robin 07831 886601

**S10134 4.8M Manual Folding Springtine harrow.** Well made in 40mm Box, folds for transport **Good condition £400** ☞ Shaun 07850 978188

#### **S10341 EDLINGTON**



4.6m Trailed Heavy duty press fitted 2 rows of straight leading tines and 2 rows of 600mm cast rings. 2 wheels at back to transport fitted 60% 340/55 - 16 tyres. **Good condition £3,000** ☞ Shaun 07850 978188

#### **S10449 2006 KONKSKILDE**



DELTA 3M Stubble Cultivator with 7 Sprung back legs with points and wide wings. Plus 3 pairs of angled discs and 3m Kerner crumbler packer. Done little work **Very Good condition £6,750** ☞ Shaun 07850 978188

**RS1548 GALUCHIO** Twin Packer Roller. 5-5m front Rigid leveling Tines & Twin Cast steel Packer rollers. Hydraulic Folding & hydraulic transport Wheels. Dry Stored. Fen Land Farm. Located Nr. Peterborough **Good condition £5,250 o.n.o.** ☞ Robin 07831 886601

**S10399 FARM FORCE** 1.5 M Front Press Fitted 10 Heavy Cast 40 degree 28 inch rings. C/w Adapted frame to fit on tractor front linkage with slight steerage. **Good condition** ☞ Shaun 07850 978188

## **9 DE-STONERS**

**S10192 GRIMME** Bedforma Twin large bodies with Stainless steel rollers on body ends. **Good condition £1,200** ☞ Shaun 07850 978188

**S10381 2011 STANDEN PEARSON** Uniwebb Trailed Destoner with 1500 wide 45, 45, 45 36 webs and no stars. Very tidy machine always barn stored **Excellent condition** ☞ Shaun 07850 978188

**S10191 REEKIE** 300SA Trailed 3 web destoner with 40mm Webs, front clod roto, no boulder box **Good condition** ☞ Shaun 07850 978188

#### **RS1126 2000 NETAGCO REEKIE**



Bedformer 2 Row. C/w markers. all new Metal. Front or Rear Mount With tractor or bedtiller. Ready to go to work. More pictures on request. Transport can be arranged at cost to be agreed **Very Good condition £1,000 o.n.o.** ☞ Robin 07831 886601

## **10 DISC HARROWS**

**S10122 PARMITER UTAH** 250 Trailed Disc harrows 3.9m working width. Ratchet adjuster for cut & width. 23" Cutaway front discs and 25" plain rears. Hydraulically lifting transport wheels with 15/56 - 17 tyres. **Good condition £1,850** ☞ Shaun 07850 978188

**S10417 GALUCHO** 3m Trailed Offset disc harrows with 21 inch cutaway fronts and 23 inch cutaway rears. Fitted Rear drawbar and 10/75 - 15.3 Tyres on transport wheels **Good condition** ☞ Shaun 07850 978188

#### **RS1545 SIMBA**



Series 2 7-2mt Heavy Duty Disc, Hydraulic Folding, Hydraulic Transport Wheels. Only used on the Fen. Dry Stored Ready to go to work. Location Nr Peterborough. For sale due change of farming policy **Good condition £7,550 o.n.o.** ☞ Robin 07831 886601

## **11 DRIERS**

**S9555 BENTALL SIMPLEX** MFM Portable drier rated up to 20 TPH. Fitted Auto control panel, 3 phase powered with diesel burner. Top fill, and unloads with cross ager under front. Appx 6.7m long inc wheels at back 2.7m wide & 5.2m tall **Good condition £2,000** ☞ Shaun 07850 978188

#### **S10500 LAW DENIS**



Drier Outdoor 12 - 15 TPH Drier, Vertical design appx 40ft tall, 3 Phase with oil fired burner. ☞ Shaun 07850 978188

**RS1586 CONDOR** Grain store Equipment To include 2 x Horizontal Chain type conveyers 1 vertical cup type elevator, Record Fan, Laichenbury Cleaner All fitted with 3 phase electric motors. All Steel stair way c/w side rails to be sold separately **Good condition Offers** ☞ Robin 07831 886601

## **12 DRILLS**

**S10443 SIMBA** 4m Freeflow Trailed hydraulic folding drill with 2 rows of adjustable fitted reversible points, Tyred packers many very good, 3 rows of double pigtail drill coulters with good points another row of tyred packers. Hydraulic fan drive and long arm markers **Good condition** ☞ Shaun 07850 978188

**S9978 1997 VICON** LZ 505 4m Mounted Suffolk coulters drill. C/w Greenland T400/70 1000 rpm power harrow c/w 60% Blades and Flexicoil crumbler. Drill has 2 rows of coulters, Following harrow, double disc markers, PTO driven fan and access step. **Good condition** ☞ Shaun 07850 978188

## S10484 2013 WEAVING



4m Tine Conversion Fitted to Lely Polymat piggy back drill mounted on Lely Cultterra with 2 rows of Double coil pigtail tines and gutter packer. Plus Long arm markers, Pre Emergence markers, Access step and following harrows. **Good condition £4,500** ☎ Shaun 07850 978188

## S10481 2002 RECO MASCHIO



PE 300 PENTA Combination Drill mounted on 3M Maschio DM3000 Power harrow with good QR tines, double wheel eradicator tines and large packer roller with a few spare scrapers. Drill has Suffolk coulters in 2 rows, long hydraulic markers, following harrow, access step and pre emergence makers (4 Tube shut off valves) **Very Good condition £3,850** ☎ Shaun 07850 978188

**S9976 MF 30 4M 23 Row** Disc coulters, grain and fertiliser drill on 14.9 - 24 tyres. 10 Fluted Grain metering rolls, 5 Fluted fertiliser rolls, question mark over the partitions so used as grain only recently. Fitted End tow kit, Following harrow, access step, hydraulic markers & wheel eradicators **Good condition £900** ☎ Shaun 07850 978188

## RS1566 VOGLE NOOTE



Masster A300 Conbi Power Harrow/Drill Power harrow Artera Grip 300 Drill 15cm Row Spacing Suffolk Coulters, Packer Roller, Finger Harrow Bar, Trasm line Kit, Bout Markers Electro Copntralls. Used This autumn.. More Photos on Request Transport at price to be agreed **Very Good condition £6,500** ☎ Robin 07831 886601

**S10137 2009 KRM** Soladrill 799 48 sprung loaded hoe coulters 6M Hydraulic folding drill. Hopper extensions enable holding a ton of seed. Access

stem, Pre emergence maker shuts off 3 rows and leaves a single mark. RDS in cab box with hopper alarm. **Very Good condition £7,750** ☎ Shaun 07850 978188

## RS1386 KLEIN



Unicorn 12 Row Beet Drill Chain Driven, Finger wheel Coverers, Hydraulic Bout Markers End Tow for Transport. Very Clean. Ready to go to work. Old but well looked after. More pictures on request **Good condition £1,550 o.n.o.** ☎ Robin 07831 886601

## RS1528 BETTINSON



4mt DD Drill. Direct Drill Fitted with Twin Alfa Accord Seed Hoppers, Harrow Bar & loading table, End Tow. Dry Stored. Located Nr Oakham **Average condition £2,350** ☎ Robin 07831 886601

## S10467 KVERNELAND



Accord EVO TS 6M Hydraulic folding Tine drill. Fitted Access step, Hydraulic Fan, Hopper cover & Extension, 4 wheel track eradicators Long arm hyd markers. 4 x 23-10.50 -1 Floatation tyres. Straight tidy drill with good points **Very Good condition** ☎ Shaun 07850 978188

## RS1555 KRM



4.8 Sola Drill 3, point Lincage mounted 2 Rows of front Cultivator tines, 3 rows of Seeder Tines followed by Pressure roller and Reekie Type Harrow. Well used And Well looked after. Dry Stored. Located Nr Crowland **Good condition £4,500** ☎ Robin 07831 886601

**S10444 STANHAY** Rallye 590 12 Row hydraulic folding cell wheel precision drill fitted with ceramic coulters. Front clod pushers, rubber press wheels front and back of coulters plus narrow rubber press wheel. Long arm hydraulic markers **Good condition £2,500** ☎ Shaun 07850 978188

## RS1582 CARRIER



4mt 3 Point Lincage Mounted. Grain only Drill Fitted with Amerzone Hopper Extension, 7" row spacing Tripple K type coulters. Reckie Following Harrow Pneumatic Low pressure Tyres. Transport Trailer with Hydraulic Lift. Dry Stored. More pictures on request. Located Nr. Tonbridge, Kent. **Good condition £2,750 o.n.o.** ☎ Robin 07831 886601

## S10396 1995 LELY



3m Combimatic Drill for power harrow mounting. Good suffolk coulters in 2 rows, hydraulic markers, access step, Pre emergence markers. Grey metering and hopper cover. **Very Good condition** ☎ Shaun 07850 978188

## RS1305 K R M



Solar 799 Pneumatic 4 mtr 32 tined seed Drill 12.5cm (5") Spacing Both Drill tines and front Cultivation Tines. All Spring Break Back as well as spring Tined covering Harrow. Beautiful Well cared for Drill. Dry Stored. New Heavy Duty PTO Shaft **Excellent condition £14,500 o.n.o.** ☎ Robin 07831 886601

## RS1476 2019 KUHN



HR 4004 4 mt power harrow combination drill. C/w Tungstun power harrow tines, track eradicators & LC402 combi liner drill. Only done 600 Hectares. It comes with Fraser 4.5mt 8 ton low loader transport trailer and many spare parts. Located Near Atherstone, Warks. More pictures on request **Excellent condition £28,000** ☎ Robin 07831 886601

**RS1420 2006 KUHN** Drill Combination. 3mtr Powerharrow. C/w Drill Combination. Dry Stored. Tines 80% Good. Ready to go to work. More pictures on request. Located Nr Stafford on Avon **Very Good condition £14,500** ☎ Robin 07831 886601

**S10366 2012 AMAZONE** ED452 6 Row Maize drill C/w fertiliser attachment. Outside rows fold in to transport, hydraulic markers & road lights. Drilled appx 3 - 400 acres a year. Nice Drill **Excellent condition £9,950** ☎ Shaun 07850 978188

**RS1575 KUHN**



4002 4mt Power Harrow Drill Combination. C/W Andrew Guest Alfa Acord Drill Conversion 3 Row Staggered Coulter, HD Following Harrow. Bout Markers, Tramline Kit. Been in use this back end. More pictures on Request. Located Nr Grantham **Good condition £6,750 o.n.o.** ☎ Robin 07831 886601

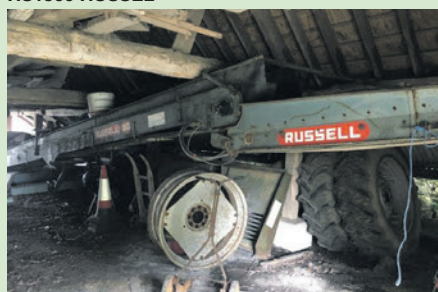
### 13 ELEVATORS AND CONVEYORS

**RS1506 CARRIER** Grain Elevator 34ft high X 9" Belt 3 Phase electric. Dismantled ready to Transport. Location, Maidstone. Pictures not yet available. Transport can be arranged **Very Good condition £650** ☎ Robin 07831 886601

**S10504 CARRIER** 40ft Belt & Bucket Grain Elevator Appx 20 TPH. Each leg 10 x 7ins externally. Footprint 25 x 13. Built in 8ft sections. 3 phase motor. Buyer removes **Good condition** ☎ Shaun 07850 978188

**RS1508 CARRIER** Grain Conveyor 24ft long x 8" wide. Dismantled ready for transport. Pictures not yet available. Located Nr. Maidstone **Good condition £400** ☎ Robin 07831 886601

**RS1560 RUSSEL**



90 Slew Rubber Belted Potato/Grain Elevator with Both Grain and Potato Hoppers. Recent Refurbished Electric motor. Dry Stored. Done little Work. Located East Sussex **Good condition £2,500** ☎ Robin 07831 886601

**S10507 CARRIER** Belt Conveyers 10ins belts appx 40M Long. Installed in roof to feed bins. **Average condition** ☎ Shaun 07850 978188

**S10422 HERBERT** 24 inch Flat belt Conveyers on Legs with Castor Wheels. C/w New cables. 20ft One with Hydraulic height adjustment and 24ft one with basic castors. **Very Good condition** ☎ Shaun 07850 978188

**S10477 MAGNA POWER** MC60/3400 Cleated elevating conveyor, 60cms wide with 4 cm cleats. 3 phase elevates from 1m to 2m **Very Good condition** ☎ Shaun 07850 978188

**S10337 Fyson** Dockloader 40ft High capacity Heavy duty belt elevator with 15kw 3 phase motor and 3m wide tippig hopper. Loads over 300 TPH. Hydraulic up & Down. Industrial 8.25 - 15 tyres **Good condition £2,950** ☎ Shaun 07850 978188

**S9509 TROUGH** Auger Tapered flight appx 3.7m long to fit in a hopper or pit bottom. Also unloading elevator if needed. **Good condition** ☎ Shaun 07850 978188

**S10478 HAITH** 80 cms Cleated elevating conveyor, 60cms wide with 4 cm cleats. 3 phase elevates from 1m to 2m **Good condition** ☎ Shaun 07850 978188

**S10434 SWIFTLIFT** 39ft 6ins Conveyer Fitted dished 24 inch belt conveyor on legs with winding handle height adjustment. C/w motor & cable **Very Good condition** ☎ Shaun 07850 978188

**S10506 CARRIER** 40ft Double Leg belt & Bucket Elevators. Each with 17ins by 8ins legs and 17ins by 31ins Footprint. 3 phase motor. Inside Choice of 2 **Good condition** ☎ Shaun 07850 978188

**RS1507 PERRY** Angleveyor 34ft High X9" Belt 3 phase electric. Dismantled ready for transport. Location Nr Maidstone. Pictures not yet available. **Good condition £400 o.n.o.** ☎ Robin 07831 886601

**S10511 CARRIER** Overhead Galvanised chain & flight Conveyer. Estimated to be 40m long presently transferring corn across yard supported by sturdy support from 20m long about 7m up in the air all Galvanised and accessible. **Very Good condition** ☎ Shaun 07850 978188

**S10512 CARRIER** chain & flight 8in Galvanised chain & Flight conveyer in 2.4m sections. Total 10m. Installed but quite accessible. Also 2 of top fill galvanised 8in chain & flight with poly tip conveyers appx 25ft long. **Good condition** ☎ Shaun 07850 978188

**S10061 SWIFTLIFT** Elevator 9m by 600mm belted elevator c/w standard man swivel wheels, small circular hopper, hyd up & down. 3 Phase. Brackets for head. **Average condition** ☎ Shaun 07850 978188

**S10510 CARRIER** Overhead Galvanised Chain & Flight Conveyers appx 26m long. 2 of Each with 6 double sided outlets fitted chain to open and change across. **Very Good condition** ☎ Shaun 07850 978188

**S10514 CARRIER** Belt Conveyers In Steel troughs, belts 290mm wide, with 3 phase drives. 2 Appx 150 ft long **Average condition** ☎ Shaun 07850 978188

### 14 FANS

**S10480 ELTA** 11 kw Round fans for corn airtion etc. 5 available 2 with auto opening vent sections. Galvanised steel, 3 phase 1m diameter 0.45 deep **Good condition £300 each** ☎ Shaun 07850 978188

**RS1557 NECO** 30 hp fan 3 Phase 50 HZ Centrifugal Dryer Fan (Unused). Photos on Request. Transport Available **New condition £4,000 o.n.o.** ☎ Robin 07831 886601

**S7231 TYPHOON** TCB 7 single phase portable fan, RH Inlet, 4" Round outlet. 0.25KW Motor 2.1 amps 2800 rpm. **Good condition £295** ☎ Shaun 07850 978188

**S9958 KONGSKILDE** HVL 100 LH Inlet Portable fan with two small rear wheels to barrow about. 3 ft diameter by 16 inch across. Round 19 inch outlet 7.5 Kw 3 phase motor & starter. Runs smooth **Good condition £500** ☎ Shaun 07850 978188

### 15 FEED AND FORAGE BOXES

**S10533 2005 KUHN AUDUREAU**



Primor 5060 Trailed Bale RH discharge Single axle chopping spreader. Takes Round or big square bales. Straight Tidy order **Good condition £3,750** ☎ Shaun 07850 978188

**S9479 ABBEY VF** 1450 trailed vertical auger 14.5 cubic meter mixer wagon. Single axle on twin wheels. Fitted hydraulic opening rear door, left & right 800mm front discharge. Digi Star EZ 3200 on board weighing. **Good condition** ☎ Shaun 07850 978188

### 16 FERTILISER SPREADERS

**RS1570 2000 AMAZONE** N2000 Twin Disc Fertiliser Spreader 24mt Spread Hearl and discs. Weather Canopy Hydraulic On/Off Mud flaps. Dry Stored. Not been used for 3 years. Photos on Request. Located Nr Walingford Oxon **Good condition** ☎ Robin 07831 886601

**S9770 AMAZONE ZAM** 1000 Mounted twin disc fertiliser spreader. C/w Hopper grids, Hydraulic shut off and headland disc. **Average condition £450** ☎ Shaun 07850 978188

**S10496 2006 AMAZONE ZAM** - 1200 Twin disc spreader. C/w 2 hoppers extensions, cover & grids. 18 - 24m discs, twin hydraulic shut offs one shutting off headland kit via tap. Holds appx 3 x 12cwt bags **Good condition £1,600** ☎ Shaun 07850 978188

**S10296 AMAZONE ZAF** 804 R Mounted twin spinning disc fertiliser spreader with discs suitable for 12 - 15m spreading. Fitted single hydraulic shut off. Used once a year on small farm then stored inside **Good condition £350 o.n.o.** ☎ Shaun 07850 978188

**S10364 2006 AMAZONE ZAM** 1200 Mounted Spinning disc spreader with 1000 litre & 1500 litre hopper extensions. Plus Headland attachment **Very Good condition** ☎ Shaun 07850 978188

**RS1236 K R M** 2.5 Ton Hopper, 4 x 600 kg Bags. Twin Disc Spreader, Stainless Steel discs, Set to 24 mts but will do 36 mtr. Constant weighing electronic Control Box, Fold over Hopper cover, Full road Lighting. More photos on request **Very Good condition £3,500** ☎ Robin 07831 886601

**S10272 2008 AMAZONE**



**ZAX 1402** Mounted spinning disc spreader c/w twin hydraulic shut off, hopper extension and grid. 12 - 18m discs. Used once as new. **Excellent condition £3,000** ☎ Shaun 07850 978188

**S10349 2019 KUHN**



**MDS 19.1 D2** Spinning disc fertiliser spreader with hopper extension rated at 1800 Kgs. Fitted double shut offs and M1 C discs. Plus hopper cover. Little used on small farm. Stored inside **Excellent condition £3,700** ☎ Shaun 07850 978188

**S10130 2017 VICON** RO XL Rotoflow fertiliser spreader. Fitted 2 alloy hopper extensions, Hopper Cover mudguard in front. **Very Good condition** ☎ Shaun 07850 978188

**S10090 BOGBAILLE** E7 773 Twin Spining Disc fert spreader c/w Hydraulic shut offs. Basic spreader seen little use & stored inside **Very Good condition** ☎ Shaun 07850 978188

**S9578 VICON** 602 Varispreader to spread 12m Includes white & black spreading bands & tubes, greasable bearings and hydraulic shut off. NSTS ticket 30 - 08 - 19. Holds 600kgs **Very Good condition £800** ☞ Shaun 07850 978188  
**S10452 2017 SULKY**



DX 30 + Twin disc mounted fertiliser spreader with Tribord WPB on board weighing system ISOBUS ready, 2 hopper extensions, folding hopper cover and road lights. Very Clean **Excellent condition £6,500** ☞ Shaun 07850 978188

## 17 FORKLIFTS AND HANDLERS

**S10101 MANITOU** Manure Fork c/w 8 tines & Hydraulic top grab. Repainted **Good condition £1,250** ☞ Shaun 07850 978188

**S10169 PALLET TRUCK SHOP** Printers Model Pedestrian Manual pallet mover. Fitted 800mm tines Rated 2500 kgs. Well made and hardly used **Very Good condition** ☞ Shaun 07850 978188

**S10501 PRO FORGE** Attachment Brackets To suit JCB wide carriage. New unused. Also used pair for a Caterpillar handler. **Very Good condition** ☞ Shaun 07850 978188

**S10403 2020 SUTON** Beet Basket 2.26 m3 With Matbro ring fittings Only used for a season Done very little work. **Very Good condition £1,650** ☞ Shaun 07850 978188

**S10232 STRIMECH** Grain Bucket Suit Matbro Appx 7ft 6ins wide Straight enough and fitted with extended wear plate **Good condition** ☞ Shaun 07850 978188

**RS1587 2011 J C B**



541 Loadal Telescopic Handler, 125 hp Engine, Hydraulic Lock Pins on Head Stock Tyres 50% good Bocsh Suspension Seat, PU Hitch, 3rd line Hydraulic service. Boom lights. More photos on request. Located Nr Grantham **Very Good condition £30,000 o.n.o.** ☞ Robin 07831 886601

**S10528 .BV WESTERGARD** Pallet Truck Hand operated . suitable for moving pallets up to 2500 kgs. Well made tool in good order. **Good condition** ☞ Shaun 07850 978188

**RS1590 N C ENGINEERING**



Shear Grab 4.5ft width c/w J C B Brackets Complete set of tines. Located Nr Grantham. More photos on request **Good condition £1,250 o.n.o.** ☞ Robin 07831 886601

**S10503 LOG GRAB** Double Claw Single ram Grab Fitted JCB Brackets and Quick release hydraulic fittings **Good condition £1,250** ☞ Shaun 07850 978188

**S10277 BV WESTERGARD** Pallet truck Pedestrian pallet truck with 1m long tines @ 0.5m centres. **Good condition** ☞ Shaun 07850 978188

## 18 GRAIN EQUIPMENT

**RS1530 COLLINSON**



12 Ton Grain/Feed Hopper Side Discharge. Purchaser to Dismantle. Fork lift available to help loading. More photos on request. Located Nr Nuneaton **Average condition £750** ☞ Robin 07831 886601

**S10505 LAW DENIS**



Marot Rotary Screen Dresser, capable of precleaning up to 30 Tph. 4 outlet chutes underneath, 3 round hole and one rotary screen. Size appx 4.6m by 1.1m Wide and 3m tall **Good condition** ☞ Shaun 07850 978188

**RS1567 GRAIN PUSHER** Locally Made Fitted with Matbro Back Plate. Photos on request **Good condition £450** ☞ Robin 07831 886601

**S10354 WALLINGA** Agri vac 614 Mobile sucker blower on single axle chassis, C/w optional cyclone. Quite tidy but need new blower **Average condition Offers** ☞ Shaun 07850 978188

**S10499 MOBARK**



5x10 xscilating screen dresser fitted 15 Kva 3 phase motor. C/w various screens. Mounted on Substantial I frame beams. Suitable for most Screening jobs. **Good condition** ☞ Shaun 07850 978188

**RS1568 BULK GRAIN HOPPER** Aprox 3 Tons Locally Made. Discharge Slot Control, Fork Lift Brackets, Step Ladder to hopper **Good condition £350** ☞ Robin 07831 886601

**S9337 2017 GOUGH ENGINEERING** Vibrating Linear Screen Mounted in substantial palletised frame with 6 ton Detacheable hopper above it. Sprung mounted Shoe has 2 x 1.5 Kw Vibrators on the sides, 2 Stainless screens 2 by 1m. Plus set of steel lids. Estimated 30TPH **Excellent condition** ☞ Shaun 07850 978188

## 19 GRASSLAND EQUIPMENT

**S10251 2012 LELY** Splendimo 320 MC Mounted 3..2m Mower conditioner with Nylon conditioning fingers. **Good condition £4,000** ☞ Shaun 07850 978188

**S10147 MAJOR** Grasstopper 605 Rear mounted offset 6ft wide single rotor topper. c/w height adjustable side skids **Good condition £500** ☞ Shaun 07850 978188

**S10424 RITCHIE** 6 M Mounted set of Hydraulic folding Grassland harrows. Fitted Reversible Cast harrow mat. Tidy condition. **Good condition £2,000** ☞ Shaun 07850 978188

**S5989 PARMITER** Shear Grab 5ft wide fitted heavy duty top rams. Straight & tidy had little use. Can be sold with JCB Brackets for an Extra £150 **Good condition** ☞ Shaun 07850 978188

**S10464 2000 RECO** Menegle SH 40N Trailed Full chop forage harvester fitted PU 1800 Pick up header 1.8m wide. Fitted in cab hydraulic spout swivel and electric chute elevation. Electric blade sharpener & Pick up hitch. Good 11/5 - 15.3 tyres. **Good condition £5,000** ☞ Shaun 07850 978188

**S10437 RECO** Ferri 5ft left hand offsetable side flail mower will go out or up to cut verges and low hedges **Good condition £1,750** ☞ Shaun 07850 978188

**S10250 KRONE** AM 2422 mounted mower conditioner, appx 2.4m c/w Hydraulic folding. Tidy for age **Good condition £1,200** ☞ Shaun 07850 978188

**RS1398 GEO BROWNS**



2.3 Flail Mower C/W Hydraulic Sideshift Multi Point CAT 2 Linkage. Whale Tail Cast Steel Flails, H D Rear Roller, Opening Rear Access Door. More photos on Request. Over Run Gearbox **Excellent condition £4,850 o.n.o.** ☞ Robin 07831 886601

**RS1367 2018 MAJOR**



MJ30 350 Cyclone finishing mower. Tractor mounted, PTO driven, hydraulic folding large diameter roller, multi rotary disc cutters, galvornised hood, full road lighting. Hardly used as new. More photos on request. Transport can be arranged **Excellent condition £6,250 o.n.o.** ☞ Robin 07831 886601

**S10451 2019 KVERNELAND** 8555 5.5 M 4 Rotor 7 tine mounted Hydraulic folding tedder with 4 wide tyres. Seen little work and stored inside **Excellent condition £4,950** ☞ Shaun 07850 978188

## 20 HEDGE CUTTERS

**RS1581 2011 MC CONNELL**



PA 93 Super Slew Hedge cutter, 5.5mt reach c/w 1.2mt (4ft) Head with Direct Drive Rotor, Compertision Flails, 5" Roller, Cable Controls, Sabaliser Frame. More Photos on request. Located Near Tonbridge Kent **Very Good condition £5,500 o.n.o.** ☞ Robin 07831 886601

## 21 IRRIGATION EQUIPMENT

**RS1585 FORD**



Wright Rain 2 of Irtigation Pumps. C/w Primers Fitted to Ford 6 cylinder 100 hp Engines. Price Ex Farm. Located Nr Tonbridge Kent. Photos on request **Good condition £2,400 each** ☞ Robin 07831 886601

**S10431 BAUER** 5 Inch Irrigation pipes appx 6m Long. Appx 50 available. **Very Good condition** ☞ Shaun 07850 978188

**S9784 JAVELIN** Irrigation Pipe Couplings and fittings in 3 and 4". Good selection **Good condition** ☞ Shaun 07850 978188

**S10204 BRIGGS** R50 Mobile Boom Irrigators, Choice of 2 Galvanised machines running on 7.50 - 16 Wheels. 72M Breed to cover 36m. Fully adjustable chassis widths suit most row widths. One with Rain gun included **Very Good condition £3,250 each** ☞ Shaun 07850 978188

## 23 LIVESTOCK EQUIPMENT

**S10517 2013 FULLWOOD**



Merlin Milking Robot, Single Phase plus compressed Air. Fully Stainless steel unit milks one at a time automatically but has an alarm to ring you in the event of an issue. Also Includes Plate Cooler, Remote switch, Single phase Vacuum pump to milk and HPC Kaeser Sx3 Sigma Air centre combines Compressor and Air drier, Also single phase but needing attention. **Go. condition £17,500** ☞ Shaun 07850 978188

**S10350 POLYPROPELENE** Feed Hoppers Suitable for ducks etc. Appx 4ft by 3ft some with Feed lids fitted holes for fill pipes. Also Qty of EB suspending round feeders. Plus quantity of Turkey Bell feeders c/w ballast weights. **Good condition £60 o.n.o.** ☞ Shaun 07850 978188

**S10322 PAXTON** 450 Gallon Round Black polythene field drinker trough c/w Float ball on inlet with cover. Appx 7ft Diameter **Good condition £350** ☞ Shaun 07850 978188

**S10408 GALVANISED** Feed Barriers 2 of Free Standing in box section with timber lower panel. 139 cms high, 452 cms long with 50cm feet. **Very Good condition £300 each** ☞ Shaun 07850 978188

**S10436 PORTEQUIP** Calf Creep Feeders, 2 of painted red in tidy order. Little used **Very Good condition** ☞ Shaun 07850 978188

## 24 LOADERS AGRIC/ INDUSTRIAL

**S9981 MF** 50B 2wd Loader Tractor, Permanent powerfull parrallel lift loader with 2180mm wide soil bucket. Lifts just over 12 ft high. 70% 16.9 R 30 tyres plus 90% BKT 9 - 16 fronts. LHR, Rear rev counter and key start. Only 1181 hours. Very tidy **Very Good condition £5,750** ☞ Shaun 07850 978188

**S9318 MK AGRITECH** Grapple Fork 1.5m wide by 1.1m deep with hood top & bottom tines and JCB brackets. Hardly used **Very Good condition £400** ☞ Shaun 07850 978188

**S6704 INTERNATIONAL** 3434 Industrial loader tractor complete with power loader and twin cylinder compressor on back. 6ft power bucket, Pallet tines and muck fork. 70% 14.9 - 24 rears. Single door. GWO **Good condition £1,750** ☞ Shaun 07850 978188

**S10489 TOE TIP BUCKET** 1.8m wide by 1.35m deep. C/w loader brackets on back believed to be Cameron Gardner. **Average condition £500** ☞ Shaun 07850 978188

## 25 MILL AND MIXERS

**S8502 MARTIN MARKHAM** Roller Mill Traditional 5" Roller cast frame type c/w 3 phase motor & starter with stop switch when small hopper above is empty **Good condition £195** ☞ Shaun 07850 978188

**S10182 HUNT** 10in Roller mill, 3 phase. C/w holding hopper above it. All Mounted over an Alvan Blanch one ton mixer. Not used lately but still would go. **Average condition** ☞ Shaun 07850 978188

**RS1514 FRASER**



1 Ton roller Mill, 1.5 Ton Fold down Hopper. Tractor PTO Driven Three Point Lincage Mounted Power Feed Aprox 1 ton Per hour. Dry Stored. More photos on Request. Located Nr Leicester. Delivery can be arranged at price to be agreed **Very Good condition £2,950 o.n.o.** ☞ Robin 07831 886601

**S10077 BAMFORDS** No 46 Rapid Grinding Mill, Belt driven, mounted on a frame with small hopper above. Suit Collector **Good condition £250** ☞ Shaun 07850 978188

## 26 MISCELLANEOUS

**S10459 1996 SUTTON** R17 PS Rear mounted anglable trailed brush with steel and nylon mix brushes and 2 rear castor wheels **Good condition £600** ☞ Shaun 07850 978188

**S9925 NJF MAGNATE** 16 KW PTO driven Generator, 3 phase c/w 3 point linkage to mount on tractor. **Average condition** ☞ Shaun 07850 978188

**RS1526 2001 BAILEY SENATOR**



Carolina Twin Axle Caravan 4 New tyres, 5 Birth. On board water Tank, 3 way Water Heater, 3 way Fridge. Wash Room With Shower. No Damp. Dry stored in Winter. Cooker Oven & 4 Ring Hob. Gas tested last Year. Leasuire Battery, MAINS electric. Cable Roll out Sun Visor Auning. Many extras. Ready for Holiday. Many More photos on Request **Very Good condition £4,250 o.n.o.** ☞ Robin 07831 886601

**RS1368 CHARTERHOUSE**



Verti Top Artificial Surface Spors Ground Cleaner, Tractor Mounted PTO driven Sand Vacume Filter 5ft working width. Good working order. More photos on request. Location Buckinghamshire **Very Good condition £2,500** ☞ Robin 07831 886601

**S8357 GEMCO** Screw Briquetting Press Stationary horizontal type for making Briquette Fuel from sawdust, tree branches, twigs, waste wood blocks, rice husk, straw etc. PTO Driven. Plus Heating element. C/w wiring to assist briquet formation **Very Good condition £4,000** ☞ Shaun 07850 978188

**S10265 THOMAS** Mounted Material layer, 3 point linkage mounted to lay material over beds for weed prevention. Galvanised frame 2.5m wide overall will take rolls up to 2m wide. Has 2 rubber height wheels, 4 angle discs and roller. Been used with Tildent Mulchtex 1.5 x 100cm x 50. **Very Good condition** ☞ Shaun 07850 978188

**S10092 2005 BLASTLINE** 20300 Shot Blasting pot. Complete with all pipes fittings and safety helmet to shot blast. (No Compressor) **Good conditio** ☞ Shaun 07850 978188

**RS1496 SUTTON** 6ft Toe Tip Grain Bucket to fit Tractor Loader, in good working order. Photos on Request. Located Nr Banbury **Good condition £500** ☞ Robin 07831 886601

**S10167 IBC** 1000 litre Polythene containers inside palletised frames. 1.8m by 1.8m. Used for food products. Also quantity of Large good quality bait boxes. **Average condition** ☞ Shaun 07850 978188

**S10274 GATE BARRIER** Single arm type in 60mm Box 5.3m wide. C/w 2 post each 1.8m by 100mm. Painted Green **New condition** ☞ Shaun 07850 978188

**RS1569 AIR COMPRESSOR** Current test cert. Air line air tank Aprox 20" 5CM diamiter 53" 135 Length. Good Working Order. Photos on Request **Good condition** ☞ Robin 07831 886601

**S10472 CHASE** Titan 7 Loading ramp Appx 10M long and 2.2m wide. Rated at 7 Ton. Ideal for loading Flat trailers. Getting rare **Good condition** ☞ Shaun 07850 978188

**S7969 PARMITER** Post Knockor Mounted Offset traditional post Knockor with chain on weight to knock posts in 2 one side behind tractor **Average condition** ☞ Shaun 07850 978188

## 27 MUCK AND SLURRY EQUIPMENT

**S10469 SEPCOM** Bio Separators Choice of 2 c/w 2.2 Kw 3 phase motors on galvanized steel stands. Appx 6" centre augers with 0.75 Stainless steel screens. **Very Good condition £5,500 each** ☞ Shaun 07850 978188

**S9401 1997 BATTIONI PAGANI MEC 8000/H PTO** Driven Slurry pump ideal for mounting on slurry tanker. Rated at 8100 litres/min @600 rpm. 1.5 bars pressure. **Good condition** ☞ Shaun 07850 978188

**RS1542 2004 BUNNING**



Highlander 20 ton trailed spreader, air brakes, sprung draw bar, spinning disc & horizontal beater, variable speed floor, weigh cells, rear tow bar. In working order ready to go to work (2 Machines available. Price is Per Machine) Located Nr Ashford Kent **Good condition £10,000 o.n.o.** ☞ Robin 07831 886601

**S8978 2017 CE PROJECTS 600** Evolution Separator Stainless Steel 600mm wide screen & roller separator for removing solids from waste liquid. 100mm pipes in & Out with 150mm overflow pipe. Only used a short while **Very Good condition £10,000 o.n.o.** ☞ Shaun 07850 978188

**RS1576 BUNNING**



Highlander 12ton 24 ft spread 4 spreading discs (New), 2 horizontal beaters, varial speed conveyor. New bearing this year, road lights, hydraulic brakes. Well Maintained ready to go to work. More photos on request. Located near Wisbech **Very Good condition £7,500 o.n.o.** ☞ Robin 07831 886601

**S10470 2011 DI VERRA ALDIVIO 400** Slurry separator, Free standing box type unit with 6.5 inch feed. **Good condition £2,000** ☞ Shaun 07850 978188

**S8979 SCREW PRESS 180mm** Stainless Steel auger type to press solids through small stainless screen inside steel tube c/w 4 Kw Geared drive motor **Good condition £2,000** ☞ Shaun 07850 978188

**RS1577 2010 ROLLAND**



V2 170 Twin Spreading Discs 24ft Spread, Two Horizontal Beaters, Hydraulic Slurry Gate, Variable Speed Bottom Coveyer, Aggrip Wheels 580/70 R38. Full Road lights & Hydraulic Brakes. More photos on request. Located near Wisbech Cambs **Good condition £10,500 o.n.o.** ☞ Robin 07831 886601

## 28 PLOUGHS

**S10515 RANSOMES TSR 300 HD 6** Furrow Reversible plough, (3+1+1+1) 14ins UCN bodies, 34ins point to point, 27in underbeam with trashboards. HD model with Rack & pinion turnover. Brackets for Discs but only fitted to the rear Furrow. Sound plough **Good condition £700 o.n.o.** ☞ Shaun 07850 978188

**RS1565 2005 RABE**



4 + 1 furrow 5 furrow plough on 14" slatted boards variable width any Bolt 12" 14" 16" depth wheel, manure skims, plough metal good + new spare wearing parts. More photos on request. Can be delivered at price to be agreed **Good condition £4,250** ☞ Robin 07831 886601

**S10117 DOWDESWELL DAFP** Furrow Press Double 30 degree cast ring press for 5 Furrow plough. still sharp & sound **Good condition £500** ☞ Shaun 07850 978188

**S10415 RANSOMES Overum 4 F** Reversible plough, 36 inch point to point ad 29 underbeam. Good Metal, rear disc and steel depth wheel **Good condition** ☞ Shaun 07850 978188

**RS1456 DOWDESWELL DELTA 100 S 4** furrow 14" reversible on Slatted Boards Hydraulic Vari Width Manure skims & depth Wheel. Sorry No Photos. Located near Bury St Edmonds **Very Good condition £2,750 o.n.o.** ☞ Robin 07831 886601

**S10044 LEMKIN Variopack 110 24** ring furrow press c/w Transport headstock and 30 degree rings. **Average condition £400** ☞ Shaun 07850 978188

**S10006 DOWDESWELL DP7D2 4** plus 1 (5) Furrow plough, 39in point to point 26in underbeam. 14" UCN bodies, hydraulic front furrow, Rear discs, 10/80 12 depth wheel. Good rev points & bodies **Good condition £1,950** ☞ Shaun 07850 978188

**S10098 RANSOMES TSR 103 3** Furrow hydraulic turnover reversible plough. Decent SCN bodies, one pair on manure skims only. **Average condition £375** ☞ Shaun 07850 978188

**S10207 LEMKIN Variopack 110** Double ring Furrow press. C/w transport headstock and 18 of 30 degree rings. Good alround order **Very Good condition £1,000** ☞ Shaun 07850 978188

**RS1434 1999 DOWDESWELL**



DP120S 9 Furrow Reversible On Land Plough Fitted with DD Bodies Skims, Depth Wheels. Plough Metal all good No breaks or welds Cat 3 Linkage. Many more photos on request. Transport can be arranged at cost to be agreed **Very Good condition £5,750 o.n.o.** ☞ Robin 07831 886601

**RS1501 2013 DOWDESWELL**



105MA 5 furrow reversible (4+1) on Slatted Boards, Manual Variable width. Little wear of the Fen. Large Clearance. Manure Skims & Rear Discs, Depth Wheel. More photos on request. Located near Spalding **Very Good condition £5,800 o.n.o.** ☞ Robin 07831 886601

**RS1574 RABE**



Furrow Press To Fit 5 Furrow Plough, Two rows of Cast Steel Rings, Chain Clod Scapers. C/W Catcher Bar. More photos on request. Located Near Andover Hants **Very Good condition £550 o.n.o.** ☞ Robin 07831 886601

**S9768 1996 DOWDESWELL DP7 D/2 4** plus 1 (5) Furrow reversible plough, good DD bodies, Manure skims on adjustable stalks. Sword landslides, hydraulic front furrow & Sound 10/80 - 12 depth wheel **Very Good condition £2,000** ☞ Shaun 07850 978188

**RS1592 KVERNELAND**



LM85 5 Furrow Reversible Plough fitted with No. 8 Bodies. 300 ml under beam clearance, Depth Wheel & manure Skims. Plough Metal 75% good. In use this autumn. Located near Grantham. More photos on request **Good condition £2,750** ☞ Robin 07831 886601

**S10368 1988 DOWDESWELL DP8B 3** plus 1 plus 1 (5) Furrow reversible with Recently new 12 inch UCN bodies. Manure skims, steel wheel etc **Good condition £1,500** ☞ Shaun 07850 978188

**S9801 LEMKIN DVL 120 5**Th Furrow. C/w slatted bodies & manure skims. Plus rest of beam broken off at turnover pivot. C/w frogs & skims but no slats. **Average condition £975** ☞ Shaun 07850 978188

**S10208 GREGOIRE BESSON** Hydraulic Press arm to fit HRDC 7 plough. Folds in hydraulically for transport and releases hydraulically. **Very Good condition £400** ☞ Shaun 07850 978188

**S10172 DOUBLE RING PRESS** C/w top tray for weights etc. Narrow cast rings ☞ Shaun 07850 978188

**S10206 OVERUM BV397F 3+1(4)** Reversible plough, worn 16 inch bodies, Good trashboards & skims included but not fitted. Very Straight. Includes a hydraulic release press ar. **Average condition £800** ☞ Shaun 07850 978188

**S10466 DOWDESWELL** DP7 D245 5 Furrow reversible plough with UCN Bodies, good XL skims and hydraulic furrow press arm **Good condition £1,600** ☎ Shaun 07850 978188  
**S10482 DOWDESWELL**



DP 2 6 Furrow Double Offset reversible upgraded to use with articulated tractors on Duals. This includes link arm extensions and depth wheels on headstock. SCN bodies, Manure skims and scalloped rear discs. 3 extra furrows available, one less some parts. Good 15/55 - 17 Depth tyre. **Good condition £2,000** ☎ Shaun 07850 978188

**S10154 DOWDESWELL** DP1 5 Plus 1 (6) Furrow reversible plough. Mixed 14in bodies 34 point to point. Manure skims Offset headstock and depth wheel. **Good condition £950** ☎ Shaun 07850 978188

**S10311 2009 LEMKIN** Press arm was fitted to a Europol 8 reversible plough. Fitted Hydraulic press release. **Good condition** ☎ Shaun 07850 978188

**S10402 LEMKIN** 110 Variopack 28 Ring Furrow press. C/w 30Degree rings appx 9ft wide. Recently refurbished press. C/w transport headstock suit 5 x 20 inch furrows. **Good condition** ☎ Shaun 07850 978188

**S10332 2009 OVERUM** Variflex - EX 5 Furrow Reversible variwidth plough with very good XL bodies, new shares & good points, Manure skims & rear discs. 10/6g - 15 depth wheel. Optional hydraulic press arm **Very Good condition £6,750** ☎ Shaun 07850 978188

**RS1468 KVERNELAND**



LB85 5 Furrow Reversible Vari Width Plough. C/W 240 type Headstock. No. 8 Bodies. Furrow Splitters on Shares, Manure Skims, Standard Depth Wheel. A really good very clean plough in use this autumn More photos on Request. Transport can be arranged **Very Good condition £3,750 o.n.o.** ☎ Robin 07831 886601

**S10369 LEMKIN** Variopack 20 Ring Furrow press suitable for 5 furrow plough fitted 65 cms 30 degree rings. C/w hydraulic release arm to fit DP8 plough and transport headstock **Good condition £500** ☎ Shaun 07850 978188

**RS1454 RABE**



4 Furrow Slatted 14in 3+1 Auto Reset. C/W Manure Skims And depth Wheel. Plough metal all good. Location Bury St Edmunds. More photos on request **Good condition £3,250 o.n.o.** ☎ Robin 07831 886601

**RS1457 K V FURROW PRESS** 4 Furrow In Good working order. In use this Autumn. Rings all sound. More photos on request. Location Bury St Edmunds **Good condition £550 o.n.o.** ☎ Robin 07831 886601

## 29 POTATO HARVESTERS AND PLANTERS

**RS1562 GRIMME**



Commander Single Row Bunker Potato Harvester. In good working order. Located East Sussex **Good condition £1,500 o.n.o.** ☎ Robin 07831 886601

**S9738 1996 STANDEN** Status 2 2 row harvester with inspection across the back. 40 & 45mm webbs this year, Dahlman rollers, Steering & levelling. **Good condition £2,200** ☎ Shaun 07850 978188

**RS1559 STANDEN**



Twin Row Potato Harvester. All Hydraulic driven. Low Pressure Balloon Tyres, Rollers, Two stage lifting Webbs, Rear Sorting Table with Weather Canopy and side certain's & Side delivery Discharge Elevator Hydraulic Driven Wheels and Steering Remote Camera and electronic controls for the Driver. Located near Walsal **Excellent condition £19,000 o.n.o.** ☎ Robin 07831 886601

**RS1141 RUMPTSTAD**



Rotary Ridger 2, 3 speed gear box rowx 30" hook tined interow Cultivator. C/w Ridging Hood, Depth Wheels, 3 Speed Gear Box. Ready to go to work. More photos on request **Very Good condition £1,250 o.n.o.** ☎ Robin 07831 886601

**S9737 REEKIE** Autoplant 2 Row automatic potato planter with good tyres and fold out wings on hopper sides. 3 Ridging bodies on the back. **Very Good condition** ☎ Shaun 07850 978188

**S8959 REEKIE** 2 Row Automatic Mounted cup & belt 2 row planter, C/w Very good hopper extension, electric monitors, Good 7.50 - 16 tyres and 3 ridging bodies all greased up **Good condition £600** ☎ Shaun 07850 978188

**RS1517 STANDEN PEARSON**



4 X 36 Potato Planter Ridger Hood. Twin Planter Belts, Stainless Steel Openers, Track Eradicators, Wide Aluminum Loading Walk way, Chemical Applicator Per Row. Very clean ready to go to Work. Many more photos on request. Delivery can be arranged. Located near Newmarket **Very Good condition £4,250 o.n.o.** ☎ Robin 07831 886601

**S10319 2005 BASILIER** FK 160 Mounted 66 inch wide Bed tiller. C/w 60 Inch Hood coverer. Fitted Heavy duty 1000 RPM gearbox. (540 PTO coupling). Plus 2 sets of clamp on fill in tines to work the fill width rather than 2 of 30 inch rows. **Excellent condition £1,950** ☎ Shaun 07850 978188

**RS1436 GRIMME**



2 Row Potato Harvester. Fully Reconditioned. C/w 50mm Webs but 35mm and 60 mm also part of the deal. Hydraulic Power steering Low level discharge elevator. A lovely clean machine ready to go to work. Reason for sale change of farming Policy. More photos on request. Located Nr Bromsgrove Staffs **Very Good condition £5,600 o.n.o.** ☎ Robin 07831 886601

**RS1481 2015 STANDEN**



Starlet FM2 Two Row Potato Hulme pulverisor with Side Delivery Discharge in good working order. Located near Kings Lynn **Very Good condition £2,780 o.n.o.** ☎ Robin 07831 886601

**S10067 KVERNELAND** DP180 NT Front mounted 34 - 36 In Potato Topper. C/w cross conveyer. PTO driven. Comes with 2 wheels and stands. Reasonably tidy with good flails **Good condition** ☎ Shaun 07850 978188

## 30 POTATO/BULB GRADERS AND EQUIPMENT

**S10476 HAITH** Box Tippler. Free standing model, on legs appx 1m up in the air. Hydraulically operated will require power pack or tractor to work. Fitted side safety cages, suitable for standard ton box 1.2m by 0.9m. **Good condition £1,700** ☎ Shaun 07850 978188

## BROKERS

**RS1387 RANSOM FAUN 2 X 30" Rows.** C/W excellent Ridger Bodies, Nearly New Tyres. Beautiful Little Planter. Ready to go to work. **Very Good condition £650** ☎ Robin 07831 886601

**S10373 TONG Self Tip Palletised portable yard skip.** Ideal for waste and keeping tidy. Easy to empty **Good condition** ☎ Shaun 07850 978188

**S10384 WELVENT Chiller unit for 1200 ton Section Insulated Store.** Presently in building but could be removed and moved on to another. Capable of Cooling and ambient control. C/w 2 electrically opening Luvre vent panels and long duct to cool all the way along the store. Refurbished 10 years ago and upgraded to the latest refrigerant spec **Good condition** ☎ Shaun 07850 978188

**S10189 TONG Free standing line suitable one ton box rotator.** C/w its own 3 phase power pack to rotate it. **Average condition** ☎ Shaun 07850 978188

**S10432 1994 TONG 4FT Coil Grading Module with Flat belt Feed conveyer.** Mounted on Adjustable legs. C/w 3 phase motor & cable **Very Good condition** ☎ Shaun 07850 978188

**RS1437 SQUIRE**



120 Twin Grader. Potato grader. Will Split Grade Bulk up to 20tons Per Hr 3 Phase electric. Many Spare webs, Various Sizes. Sale due to Change of Farming Policy. Located Near Bromsgrove. Dry stored **Good condition £4,600** ☎ Robin 07831 886601

**S9733 TONG 825 Autoweigher,** single twin cleat belt and holder to take one bag. On caster wheels. Plus Newlong hand held bag sticher if required. **Very Good condition £350** ☎ Shaun 07850 978188

**S10279 POTATO BOXES** 18 Cwt 6 Board palletised potato boxes 6ft by 47inch deep by 38 tall. One inch gaps between boards, inside posts rounded off. **Good condition £20 each** ☎ Shaun 07850 978188

**S10433 JOMAC Box Filler Double sided Sliding drop down head type on Adjustable legs.** C/w motor & cable. Finger partitioned belts on the feeders. **Very Good condition** ☎ Shaun 07850 978188

### 31 POWER HARROWS

**S10420 KVERNELAND 3m Power harrow,** Fitted Heavy duty 1000 Rpm Gearbox with 540 shaft. Good tines, few leaks and no packer or Crumbler. Spares or repairs **Poor condition £450** ☎ Shaun 07850 978188

**S10302 LELY 33 Series 3M Power harrow** with good club tines, front clod bar, Heavy duty through shaft gearbox and open centre crumbler. No leaks. Quite tidy for age New PTO guard. **Good condition £750** ☎ Shaun 07850 978188

**S10376 1989 KUHN**



HR301 3M Power harrow with Heavy Duty through shaft 2 speed gearbox and Standard packer roller. Fitted Good hard surface tines. 1000 PTO **Very Good condition** ☎ Shaun 07850 978188

**S10241 LELY Roterra 3M Power harrow.** Tidy order **Good condition £950** ☎ Shaun 07850 978188

**RS1593 AMAZONE RE301**



3m reciprocating bar power harrow. C/w packer roller and drill lift pack. In good working order. More photos on request. Located near Swaffham. **Good condition £450 o.n.o.** ☎ Robin 07831 886601

**RS1359 LELY POWER HARROW 3 mtr Combination Drill.** C/w rear Piggy Back lincage & RECO Sulky Suffolk Coulter Seed Drill. With Rekie Following Harrow. Very clean Machine Direct from farm ready to go to work. Can Be delivered at cost to be agreed. More photos on request **Very Good condition £2,750 o.n.o.** ☎ Robin 07831 886601

**RS1580 2003 MASCHIO**



3mtr Power Harrow. C/w Packer Roller. In good working order. Tines 75% good. Dry Stored. Located near Tonbridge Kent. More photos on request. Transport can be arranged **Good condition £4,500 o.n.o.** ☎ Robin 07831 886601

**S10421 RECO MASCHIO DM4000 4m Harrow** C/w good bolt on tines, packer with hydraulic adjustment. 1000 Rpm through shaft gearbox. Faded paint **Average condition £850** ☎ Shaun 07850 978188

**S10240 2005 RECO Maschio DM 4000 4M Power harrow** recently fitted new tines & Gearbox. Good packer roller with good scrapers. Rear clod board & Brackets for erradicators **Good condition £2,550** ☎ Shaun 07850 978188

**S10486 LELY End tow kit Suit 4M Lely Roterra.** C/w drawbar, 2 Goodyear 10/80 - 12 tyres and brackets **Good condition Offers** ☎ Shaun 07850 978188

### 32 SILOS AND STORAGE

**S10479 FREE STANDING** Centre discharge hoppers on legs, galvanized steel one round, one corrugated. Appx 5 ton each. Kept inside **Very Good condition** ☎ Shaun 07850 978188

**S10485 DMC 120 Ton Drying Silo** appx 18ft Diameter & 20 ft to eaves. Includes automated transfers system and Bental fan with LPG heater included. Fully reinforced with good galvanised panels. **Good condition** ☎ Shaun 07850 978188

**S10509 CRITTAL** Nest of 28 3m panelled square bins. Joined in 2 paired runs of 7 a side. Total 28 bins. 6 panels each 1m high per bin. One panel per bin has 20 by 22 ins access panel and 6 ins hole for airtation tube (One per bin included) A Few Single phase 550 W fans **Good condition** ☎ Shaun 07850 978188

**S10474 CENTRE DISCHARGE** Free standing open top hopper on legs appx 2 m by 1.5m. Fitted powered discharge slide appx 1m high and extension on top. **Very Good condition £5,500** ☎ Shaun 07850 978188

**S10475 CENTRE DISCHARGE** Open topped free standing hopper fitted powered 8 inch auger discharge out of side. Mounted on legs. **Good condition** ☎ Shaun 07850 978188

**S10334 2010 GSI**



500 Ton Galvanised steel Round Bins 33ft diameter, 2 of, 6 sheets high. C/w doors and very good access steps. Galvanise still bright. Should dismantle easily. 2 More a little older **Excellent condition Offers** ☎ Shaun 07850 978188

### 33 SPRAYERS

**RS1584 1996 GEM**



Diamond 1000Ltr CTT Sprayer. C/w 20 mt Booms Mixer tank, wash tank, Variable Level Booms & Bout Markers. Last Cert 2022 **Good condition £1,500** ☎ Robin 07831 886601

**S10089 LELY**



Hi Trac 250 Low ground pressure 12M Sprayer, VW engine only 2528 Hours. Good cab with RDS SAM 20 monitor. 4 cylinder pump & 2000 litre tank. 17.5 LR24 Drive wheels Hydraulic folding booms. **Very Good condition** ☎ Shaun 07850 978188

**RS1573 2006 JOHN DEERE**



512 Sprayer 24 mt Booms 1200 lt Tank, Electro Computer Controls, Induction Tank, Clean Water tank, Wash hose Vacuum Recycling. Current test Certificate. More photos on request. Transport can be arranged at price to be agreed Located Nr Coventry **Very Good condition £6,500 o.n.o.** ☎ Robin 07831 886601

**RS1563 1993 FRASER**


Agri Buggy 56 24 meter booms, 5 section Control, RDS Rowe Crop wheels. Ready to go to work. Located near Melton Mowbray **Very Good condition £9,250 o.n.o.** ☎ Robin 07831 886601  
**S9998 CHAFER** 1000 litre Fibreglass front tank. C/w own pump and some plumbing. Brackets for use with tractor front linkage. **Good condition £900** ☎ Shaun 07850 978188  
**RS1472 2020 AMAZON**



UF 1501 Tractor three Point Mounted Spayer. C/w 20Ft booms, Mixing tank & Hand wash, Ambset controls. Current 12 months Cert. Reason for sale going Organic. Not used last year. More photos on request **Excellent condition £17,500** ☎ Robin 07831 886601  
**S10040 HARDI**



Commander Multitrack Trailed 2800 litre sprayer fitted 24m boom with triplex jets induction bowl, clean water bottles, bout marker etc. 6 cylinder pump mounted in Linkage steering system. On 18.4 R38 tyres. Booms had Airbag system originally odd weld but pretty good. Full in cab controls via multiple boxes **Good condition £3,500** ☎ Shaun 07850 978188

**S10184 EVERARD** 800 litre Mounted 12m Sprayer c/w electric in cab controls. PTO pump. Average manual folding single line booms. **Good condition £800** ☎ Shaun 07850 978188

**S10502 WASTE WARRIOR** 250HD 250 litre Compact paddock Trailed sprayer, single axle with 50mm Ball tow connection. 4m Booms with Drift Beta Nozzles can spray upto 6.25 acres per tank full. Fitted 2 bar pump with agitator mixing and easy drain taps **Very Good condition £650** ☎ Shaun 07850 978188

**S10442 MICRON** Weed Wiper Mounted model Fitted with 6m manual folding booms and 2 polythene tanks each appx 20 litres. Operates with 12v system from tractor. Will operate at 2.45m, 4.22m as well as 6m. **Very Good condition £1,750** ☎ Shaun 07850 978188

**RS1579 1985 WILMONT**


728 Light track sprayer 12mt Booms, Ford 1600cc Engine, Row Crop & low Ground pressure wheels & tyres. Dry Stored. No current test certificate. Not been used for 6 yrs. More photos on request. Located near Wisbech. Transport can be arranged **Average condition £750 o.n.o.** ☎ Robin 07831 886601

**RS1529 CHAV TRACK**


24mt Spray Booms Self Propelled Sprayer, Perkins Engine, 4 Wheel Drive, 4 Wheel Steer Running Gear is J C B Loadall, Flotation & Row Crop Wheels 2000lt Tank, Full Road lighting, Wash tank, Chemical induction unit, Variable rate control. No Current Certificate. Located Near Oakham Rutland **Good condition £8,500 o.n.o.** ☎ Robin 07831 886601

**34 SUBSOILERS**
**S10336 HEAVY DUTY**


4.7M Subsoiler 3 x 150 by 100mm bar frame with 600mm packer on the back. Leading tines plus 7 subsoiling tines. Serolus kit **Good condition** ☎ Shaun 07850 978188

**RS1475 MASTEMBROKE**


Single Leg trailed Mole Drain, Hydraulic Lift Wheels And S S Leg. In good working Order. Location Atherstone Warks. More photos on request **Good condition £1,750** ☎ Robin 07831 886601

**S10223 TIMAG** 2 leg trailed heavy duty mole drainer. Pulls 2 reversible 4ft mole legs hardly worn on one end with opener discs. 2 12.5/ 80 -15.3 Transport tyres. 2 very good rams to lift out. Very sturdy unit. **Very Good condition** ☎ Shaun 07850 978188

**RS1588 2014 CHALLENGER**


Phoenix 3.00mt 5 stager Sub Soiler Legs. One row of Angling Discs followed By Steel. Road lights, side Rails, Pressure Roller. More photos on Request Located near Grantham **Good condition £7,000** ☎ Robin 07831 886601

**S10149 TWB** 5 Leg Heavy duty Vee form type subsoiler with 5 swivel legs on 3.8m wide toolbar fitted packer roller on the back **Very Good condition £4,500** ☎ Shaun 07850 978188

**RS1306 FLATLIFT**


3mtr 3 Leading Low profile Subsoiler Swivel Legs. "2 Rows of Discs. Plus Packer Roller and Spare tungston Points. All in good Working order. More Photos on request **Very Good condition £7,500 o.n.o.** ☎ Robin 07831 886601

**S10141 2 LEG HEAVY DUTY SUBSOILER** 6ft wide 5 inch box toolbar 2 30 inch legs with good wings and points **Good condition £600** ☎ Shaun 07850 978188

**S10435 RANSOMES** C83B Subtiller 3 Swivel Leg model in tidy order with discs & C/w Crumbler on back **Good condition £1,900** ☎ Shaun 07850 978188

**S10383 RANSOMES** C 90 Subsoiler. C/w 2 Norman Raw legs and 2 HD steel wheels. **Good condition** ☎ Shaun 07850 978188

**RS1556 FALMAC** 5 leg 3.5mt heavy duty sub soiler. C/w heavy duty packer roller. Ready to go to work. Located near Crowland Peterborough. Transport can be arranged at cost to be agreed **Good condition £4,000 o.n.o.** ☎ Robin 07831 886601

**RS1453 T W B**


7 LEG Cat 2 & 3 I Linkage. All Good Metal. Pressure roller Brake Back Legs. Location Newmarket. More photos on request. Transport can be arranged **Good condition £3,750** ☎ Robin 07831 886601

**S10007 HOWARD** Paraplow 4+2+1 (7) leg paraplow c/w brackets for discs but only one present. Generally good especially wear plates. 11.5/80 - 15.3 depth wheel **Good condition** ☎ Shaun 07850 978188

**35 TANKS**

**S10498 TITAN** Fuel Safe 2500 litre bunded plastic fuel station, fitted 240 v pump with hose, fuel meter and Watchman indicator. Green **Good condition £700** ☎ Shaun 07850 978188

**36 TRACTORS & EQUIPMENT**

**S10406 1993 CASE INTERNATIONAL**



895XL Duo 4 wd Tractor on 70% 16.9 - 34 rears and large fronts. Appx 9000 hours. Tidy tractor had light use. Straight little tractor with sound tinwork. Runs well. Recent Clutch & Starter. **Very Good condition £9,500** ☞ Shaun 07850 978188

**S10523 MC CORMICK** Farmall BM 2 Wd Tractor on 80% 12.4/11 R38 Rears and 6 - 16 fronts. Fitted PTO and 3 Point linkage. Restored a while back but still very respectable. **Good condition** ☞ Shaun 07850 978188

**S9906 1998 RENAULT** 725 RZ 4wd 160HP tractor c/w front linkage and PTO. 60% 20.8 R 38 rears, 50% 16.9 R28 Fronts. 8350 Hours runs well. Very Straight & sound **Good condition** ☞ Shaun 07850 978188

**S10159 YARA** N Sensor ALS Active Sensor kit, comes with all the wiring loom & sensors plus Windows 10 I Pad with in cab mounting. Roof mounting unit has its own light source for nighttime operation. **Very Good condition £5,750** ☞ Shaun 07850 978188

**RS1492 MASSEY FERGUSON**



MF60 Digger. C/w 12" back actor trenching bucket & front grain bucket. In her working clothes. Photos on request. Located near Banbury **Average condition £2,000 o.n.o.** ☞ Robin 07831 886601

**S10447 2012 MF**



5475 Dyna 4 4 wd 145 HP tractor, 1 owner driver from new only done 1800 hours. D1 spec cab with suspension, passenger seat and carpet. Front linkage, 4 spools, 2 speed rear PTO. 80% 520/70 R38 rears, 70% 420/70 R28 fronts. Rare chance to buy an Unmarked tractor **Excellent condition £48,000** ☞ Shaun 07850 978188

**S10209 1972 FORD** 4000 2 wd Tractor basic model, no cab or roll bar. 70% 12 - 36 rears, 10 -16 or 7.50-16 fronts. Recently restored well. **Very Good condition** ☞ Shaun 07850 978188

**S10532 1985 FORD**



6610 4wd Tractor fitted AP cab, PAS and Quicke 3360 Power loader. 70% 13.6 -38 Rears and matching fronts, spools and pick up hitch. Showing 3282 hours **Very Good condition £11,950** ☞ Shaun 07850 978188

**S10519 2014 NEW HOLLAND**



T6 165 Electro Command 40K Gearbox, Only 4200 trouble free hours. 600 R38 Rears as new. 480 R28 fronts 40%, set of front weights **Very Good condition £38,500** ☞ Shaun 07850 978188

**S10428 1991 RENAULT**



103 - 54 Tractor 4 wd Tractor, c/w 4 spools, QA arms, trailer brakes, 14.9 R28 fronts 60% 16.9 R38 rears. 7415 hours. Tidy tractor **Good condition £12,750** ☞ Shaun 07850 978188

**RS1589 2014 JOHN DEERE**



6115 Std 4 x 4 Tractor 115 hp, 5100 hrs 40k power Quad Plus, 3 manual Spool valves, PU Hook, Tyres 70% Good Rear 420 85 R38, Front 38 85 R24 Air Con. A good Clean tractor ready to go to work. More photos on request. Located Near Grantham **Very Good condition £32,000 o.n.o.** ☞ Robin 07831 886601

**S10488 INTERNATIONAL** Weights. Set of rear wheel weights for IH or Ford tractor, round type. **Good condition** ☞ Shaun 07850 978188

**S10526 2018 MASSEY FERGUSON** 7726 S Dyna 6 4 wd tractor with Dyna 6 Gearbox (50K) with Full Suspension, Air Brakes and front Linkage. Joystick controls in good spec. Airconditioned cab with 7 spools. Tidy tractor done under 4000 hours **Good condition** ☞ Shaun 07850 978188

**S10429 LEYLAND** 384 75 HP 2 wd tractor in largely original condition except for new radiator, Seat, brakes & steering. Runs well **Good condition £2,800** ☞ Shaun 07850 978188

**S10378 1989 ISEKI** TU 320 4WD Compact tractor fitted Lewis Backhoe loader and Lewis front power loader with 4ft bucket. Hydrostatic drive and 60% Grassland tyres. Very useful. **Very Good condition £5,500** ☞ Shaun 07850 978188

**S10525 JOHN DEERE** Model A 3 Wheel Rocrop tractor Fitted Electric start petrol engine. C/w with Drawbar, PTO and Stubs for linkage. Long axles with 11 - 42 rears and 7 - 50 - 16 fronts **Good condition** ☞ Shaun 07850 978188

**S10445 2015 JOHN DEERE** Lift Rams 80mm Ex John Deere 6120, supplied as high capacity but upgraded. Little used **Excellent condition** ☞ Shaun 07850 978188

**S10463 FRONT MOUNTED** 1000 kgs block fits on front linkage **Very Good condition** ☞ Shaun 07850 978188

**S10516 2007 MASSEY FERGUSON**



5455 4 Wd Tractor with Dyna 4 Gearbox 40k. Only done 2500 hours fitted 90 % tyres. Optional Front end loader or Front Linkage. **Very Good condition** ☞ Shaun 07850 978188

**S10492 2000 JOHN DEERE**



6910 4 wd Powerquad tractor, only 6750 hours, on 70% 460/85 R38 rear tyres, and 60% 380/85 R28 fronts. Clean Air con cab with no rips or wear on trim or seat. Pick Up hitch, 3 manual spools and 8 x 50 kg front weights **Good condition** ☞ Shaun 07850 978188

**RS1515 MASSEY FERGUSON** MF40 Loader to Fit MF35/135, 65 & 165 complete with all hydraulic Pipes. Fork need a bit of attention. Sorry No Photos. Located near Leicester **Good condition £500** ☞ Robin 07831 886601

**S10524 ALLIS CHALMERS** Rocrop Tractor, 2 wd on 80% 9 -24 Rears and 4 - 15 fronts. 3 Speed gearbox, PTO & Drawbar. Good Bench seat. Designed with long bellhousing for centrally mounted implements **Good condition** ☞ Shaun 07850 978188

**S10450 2019 NEW HOLLAND**



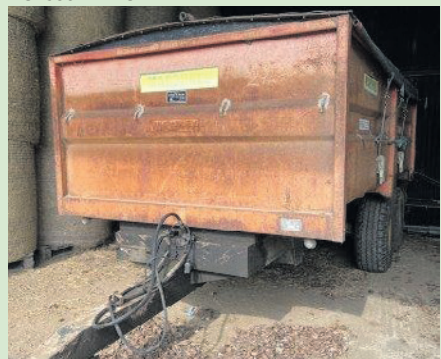
T6 180 Dynamic Command Tractor, only 930 hours by owner driver. 50K with Air brakes, cab suspension, Autosteer and gears. Front linkage, 4 spools. 1000, 540 & 540 E PTO Top spec tractor in very nice order. Michelin 600/65 R38 rears 80% and 480/65 R28 Fronts with Fenders. Available with New Holland Silver warranty **Very Good condition £67,500** ☞ Shaun 07850 978188

## 37 TRAILERS

**S10144 ALLOY BODIED** Tandem Axle lorry body trailer conversion. On Spring 10 stud axles with 385/65 R22.5 Super singles. Decent 17ft by 3ft 9 by 7ft Alloy body with back door requiring repair. Useful bulk hauler **Average condition** ☞ Shaun 07850 978188

**RS1553 MERRICK** 16ton Covered Grain trailer. Twin Wheeled, Tandem axle. Good Tyres. Aluminum Body, Manual Rear Door, Grain chute, Road Lights Hydraulic Brakes, Fold over Tarp. Dry Stored. **Good condition £5,750 o.n.o.** ☞ Robin 07831 886601

**RS1536 MARSHALL**



8 Ton All Steel Monocoque Twin Axle Grain trailer, manual rear door, Roll over Tarp, good tyres, Road Lights. Ready to go to work. Located near Rochester Kent **Good condition £2,750 Offers** ☞ Robin 07831 886601

**S10261 2016 MARSHALL** QM 11400 14 Ton Monocoque trailer on 460/60 - 22.5 Tyres. C/w Air & Hydraulic brakes plus Hydraulic back door, Mudguards, Sprung drawbar, front ladder and window opening. **Good condition £12,000** ☞ Shaun 07850 978188

**S10171 TRIFFITT**



14 Ton Monocoque trailer on Ag Super singles. C/w hyd brakes and back door plus easy sheet. Seen little use **Excellent condition £15,000** ☞ Shaun 07850 978188

**S10150 2 HORSE TRANDEM AXLE** horse trailer for large horses 87 ins tall by 5ft wide. Side access door and rear load ramp door. 6 - 16 Tyres and wheels. Alloy chequerplate floor **Average condition £600** ☞ Shaun 07850 978188

**S10465 WEST** 10 Ton Front loading Silage trailers, Choice of 2 straight. Ready to go with full sets of extensions, Auto rear doors with mesh panel etc. Walking beam axles with 12.5/80 - 15.3 tyres. Brakes & LED lights. **Good condition £4,500 each** ☞ Shaun 07850 978188

**S10309 IFOR WILLIAMS** TA510G Tandem axle Livestock trailer 6 - 16 Landrover wheels to outside. Galvanised chassis, white roof. Sheep decks Tidy for age ☞ Shaun 07850 978188

**S10190 IFOR WILLIAMS** 12 by 6 Flat trailer, wheels underneath with alloy chequerplate floor. Ex Livestock trailer. **Good condition £1,000** ☞ Shaun 07850 978188

**RS1535 RICHARD WESTON**



10 Ton Twin Axle, All Steel Grain Trailer, Road Light And Brakes, Manual Back Door with Grain Shute. Roll over Tarp, Good Tyres. Dry Stored. Ready to go to work **Good condition £3,750 o.n.o.** ☞ Robin 07831 886601

**S10462 HI LIFT 4 TON TRAILER** with double timber sides appx 4ft. Single axle on 12.5/80 - 15.3 tyres. Sound tidy trailer **Good condition £1,400** ☞ Shaun 07850 978188

**S10175 BAILEY** roll over easy sheet for 14 Ton root trailer, complete kit removed from trailer **Very Good condition £1,475** ☞ Shaun 07850 978188

**RS1554 GRAIN TRAILER** 14tons Lorry converted Grain Trailer Tandem Axle, Aluminum body, Drop own sides, Manual Rear Door, grain Shute, Road lights, Fold over Tarp, Hydraulic Brakes. Dry Stored. Located near Crowland **Good condition £4,500** ☞ Robin 07831 886601

**RS1537 7 TON TWIN AXCLE**



All steel monocoque Body Grain Trailer, Roll Over Tarp, Road Lights and Tarp Manual rear Door With Grain Shute, Road lights and Brakes. Dry Stored. Ready to go to work. Ideal for stables. Location Rochester Kent **Average condition £2,250 o.n.o.** ☞ Robin 07831 886601

**RS1478 BAILE TRAILER** Multi Flat 8 Artic type Bale Trailer with stepped frame and Dolly on Super single Wheels. Located near Newmarket. More photos on request **Very Good condition £5,750** ☞ Robin 07831 886601

**S10340 AS FF10** Monocoque trailer, tandem walking beam axles, 12.5/80 - 15.3 tyres. Swinging back door & Grain chute. Solid & reasonably tidy for age. Available with a full set of silage sides. **Good condition £2,250** ☞ Shaun 07850 978188

**RS1538 2021 MARSHAL**



11 Ton aLL Steel Monocoque trailer with Twin Super single Wheels, Manual rear Door. C/W Grain Shute And Fold over Tarp. Trailer Like New. Only done one Harvest. Located near Haywards Heath **Excellent condition £10,000 o.n.o.** ☞ Robin 07831 886601

**RS1543 2009 BAILEY**



16 Ton Monocoque Tandem 10 Stud Axle on super singles tyres 20% good, Sprung Draw Bar, Hydraulic Brakes, Full road lights, Auto Tail Gate. Ready to go to work. Located Hailsham E Sussex **Very Good condition £10,500** ☞ Robin 07831 886601

**S10344 1979 AS**



FF10 Tandem walking beam axle trailer fitted front loading silage sides. Solid trailer but well used. 12.5/80 - 15.3 tyres. **Average condition £1,850** ☞ Shaun 07850 978188

**S10497 IFOR WILLIAMS**



DP12 G - 12 12 by 6 Lift off body Sheep trailer c/w Sheep decks & spare wheel. White top alloy chequerplate floor. 195/50 R13 tyres. **Good condition** ☞ Shaun 07850 978188

**RS1540 WARWICK** 10 Ton Grain Trailer, Drop Detachable Sides, Manual rear door, Grain Stute. Road Lights & Brakes. Good all round General Ag Trailer **Good condition £4,500 o.n.o.** ☞ Robin 07831 886601

## 38 WHEELS/TYRES (DUAL/ ROWCROP)

**S9985 ALLIANCE** A350 12.4 - 46 Rocrop tyres (60%) fitted to 8 stud 275 PCD, 220 hole fixed centre wheels. **Very Good condition £800** ☞ Shaun 07850 978188

**S10086 23.1 R 26 TYRES** with appx 60% treads plus pair of Steel rims with 8 holes appx 1.25ins each 8inch PCD.5.5ins centre hole. **Good condition** ☞ Shaun 07850 978188

**S9620 BETTINSON** 230/95 R44 (9.5 R44) Rocrops Pair of of suit JD 6210 & similar (rears) fitted bolt in centres & as new BKT tyres, plus 8.3 R32 Fronts with 15% Kleber tyres on Stocks bolt in 8 stud centres. **Very Good condition** ☞ Shaun 07850 978188

**S9557 28.1 - 26 FLOATATION TYRES** probably 12 ply mounted on fixed centre early JD rims 200PCD 150 hole. **Very Good condition £1,000** ☞ Shaun 07850 978188

**S10227 13.6 R 48 ROCROP WHEELS** fitted centres for Deutz 6160 plus pair of 11.2 R36 Fronts c/w 40% Alliance tyres. 8 stud 275 PCD, 220 hole suit Deutz etc. **Average condition** ☞ Shaun 07850 978188

**S10228 TRELLEBORG** 230/95 R44 50% Rocrop Tyres on Rims with 8 stud 200PCD centres 150 hole suit Mc Cormick CX105 tractor plus fronts 8.3 R32 5% with 8 stud centres 275 PCD 220 holes. **Good condition Offers** ☞ Shaun 07850 978188

**RS1353 TITAN** 22.51x16.i Front Floatation Tyres Block type tread. As new of a combine. Done only 600 acres. Location near Fakenham **Excellent condition £750** ☞ Robin 07831 886601

**S9986 MICHELIN** 600/65 R38 Tyres fitted to John Deere bolt in centre rims, 8" PCD" hole stud suit JD 6600- 6800 tractors. **Average condition £700** ☞ Shaun 07850 978188

**RS1502 ROW CROP WHEELS** To Fit JD or Class Rear 340-85 R48 80% Good Front 270-95 R36 80% Good. Photos on Request. Location Near Spalding. Reason for sale sold Tractor **Very Good condition £1,550** ☞ Robin 07831 886601

**S10405 ALLIANCE** 300/95 R46 Rocrops. C/w 8 Stud 275 PCD centres (JD) 220 hole 70% Tyres And Matching 12.4 R 32 Fronts with 70% Tyres and 10 stud centres 325 PCD 280 Hole Suit JD 6155. Plus dualing kit and 2nd set with 30/5 % tyres. **Very Good condition** ☞ Shaun 07850 978188

**S10490 STOCKS** 15 - 38 Duals Black painted in good order. Plus pair of Goodyear 16.9 - 38 tyres 60% good supplied but not fitted **Good condition £375** ☞ Shaun 07850 978188

**S10166 NANKANG** 6 By 9 nylon 10 ply Tyres on 5 Stud split rims. Unused appx 6 available **New condition £40 each** ☞ Shaun 07850 978188

**S10461 ALLIANCE** A350 11.2 R48 Rocrops on Fixed centre rims for MF tractors 8 Stud 200 PCD, 150 mm hole. Plus fronts 230/95 R36 with bolt in extra offset centres 8 stud 275 PCD 220 Hole. All tyres appx 70 % **Very Good condition** ☞ Shaun 07850 978188

**S10289 STOCKS** 11 - 36 Pair of Heavy Duty Rocrop Wheel rims and bolt in centres for JCB Fastrack. No tyres included. **Good condition £150** ☞ Shaun 07850 978188

**S10142 STOCKS** 16.9 R 38 Dual wheels with full set of clamps and 5% tyres **Average condition £400** ☞ Shaun 07850 978188

## RS1499 ROW CROP WHEELS



Wheel & tyres. Were fitted on Claas tractor. Rear 80 % Good 380-9 -R50 Or (14-9 R50) Fronts 60% Good 380 -85 R34 or (14-9 R34). Photos on request. Location Near Kings Lynn **Very Good condition £1,800 o.n.o.** ☞ Robin 07831 886601

**S9926 MICHELIN** 650 / 65 R 38 Tyres pair of used ones with 50% tread. Plus pair of 540/65 R28 tyres (40%) to make set. **Good condition £750** ☞ Shaun 07850 978188

**S10521 FIRESTONE** 650/65 R38 Tyres with 40% Tread in sound order plus pair of 540/65 R28 Fronts to match about 30%. **Good condition** ☞ Shaun 07850 978188

**RS1352 GOOD YEAR**



Floatation Tyre 900 / 55 R32. As new. Done a couple of seasons on combine. Location Near Fakenham Norfolk **Excellent condition £3,750** ☞ Robin 07831 886601

## 40 VEHICLES/LGPV

**S10527 LANDROVER** SWB Petrol Series 2 with Hard & Canvas tops. Towbar and new 7.50 -16 Tyres. Good all round condition. **Very Good condition £17,000** ☞ Shaun 07850 978188

**RS1525 2001 TOYOTA**



Land Cruiser Amerzon. New 12 Months MOT. Two new Batteries, 4.2 Ltr 6 cylinder engine, Turbo + intercooler, Tow Bar Full Electrics. Recent New Turbo & Timing Belt. New rear Brakes. Uses no oil. 7 seats but only 5 fitted. Only 2 owners from New 412 K Tyres 50% Good. Well used. Well Maintained. Best towing Vehicle on the road. Many Photos on Request. **Good condition £5,500 o.n.o.** ☞ Robin 07831 886601

**RS1524 DISCOVERY TYRES**



255- 55 R20 4 of Road Tyres 50% Good. Located near Winslow Bucks £75-00 Each **ONO Good condition £75 each** ☞ Robin 07831 886601

**S10494 2002 ISUZU** Trooper Citation SWB Automatic 3.0 D Engine. Green Livery with grey velour heated front seats. Current MOT. Fitted Steel wheels with 245/70 R 16 tyres 70%. And Tow bar **Average condition** ☞ Shaun 07850 978188

# Wrights FARMING REGISTER

We have Brokerage opportunities for self motivated people with farm machinery experience in various areas of the country.

*All areas of the map in grey are available*

*For an informal chat about these opportunities please contact*  
**Shaun van den Bos 07850 978188**



## Concrete Flooring Specialist and supply of agricultural buildings **S J STANBERRY & SONS LTD**



- INDUSTRIAL, AGRICULTURAL OR COMMERCIAL
- INTERNAL OR EXTERNAL
- STEEL FIXING
- BRUSH, TAMP OR POWER
- FLOAT FINISHES
- FOUNDATIONS
- POULTRY UNITS & STABLE YARD
- SILO BASES
- APRONS & SHED FLOORS
- ANAEROBIC DIGESTION TANK BASES
- GRAIN, POTATO & MACHINERY STORES
- GROUNDWORKS & PREPARATION

**01945 870076**

■ nationwide coverage ■ sales@sjstanberry.com ■ www.sjstanberry.com

## We Specialise in Farm and Business Insurance



**The Independent On-Farm Insurance Service**

35 High Street, Epworth DN9 1EP

**Tel: 01427 873388**

Serving customers from Lincolnshire, Derbyshire, Nottinghamshire & Yorkshire

Authorised & Regulated by The Financial Conduct Authority



### NY TRACTOR PARTS

**Suppliers of new and used parts for John Deere tractors**  
We supply to UK & Overseas

Rockshaft kits available for most models  
Always breaking JD tractors for used parts - most models

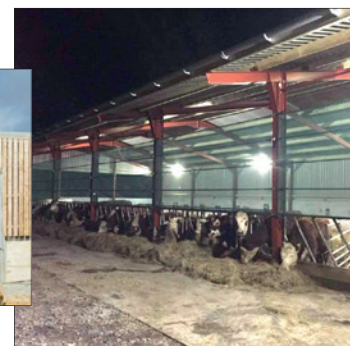
**STOCKISTS FOR:** 

**Tel: 01673 828883 Fax: 01673 828892**  
www.nytractorparts.co.uk email: info@nytractorparts.co.uk  
Unit 2, The Forge, Moor Road, North Owsby, Market Rasen, Lincs LN8 3PR

## Roll-over sheet kits for grain trailers, Roller blinds and windbreaks for agricultural buildings



**Coverttec Structures 01455 698565**  
[www.covertteagriculturalcovers.co.uk](http://www.covertteagriculturalcovers.co.uk)



# LATEST USED STOCK

Search latest used stock at [www.chandlers.co.uk](http://www.chandlers.co.uk)

# Chandlers

## Farm Equipment



**RG655C**  
2014, 4911 Hrs, 240 HP  
Speed: 50Km/h  
36m Pomier Booms  
**£72,500.00**



**RG645C**  
2016, 5461 Hrs, 222HP  
30/15m Pomier Aluminium  
Single Fold Booms  
**£85,000.00**



**MT765B**  
2006, 9000 Hrs,  
Track: 30  
Extreme Ag Tracks  
**£39,950.00**



**MT765D**  
2013, 8158 Hrs  
Speed: 40Km/h  
Track: 25  
**£67,750.00**



**MT775E**  
2015, 6896 Hrs, 400 HP  
Speed: 40Km/h  
Track: 25 Track %: 50  
**£77,500.00**



**MF 1765M MP**  
2022, 65 HP  
Tyres: 50/65R28 (100%)  
136-28 AG(100%)  
**£32,350.00**



**MF 5S.125 ESD4**  
2022, 3 Hrs, 125 HP  
Tyres: 440/65R28 (100%)  
540/65R38 (100%)  
**£122,000.00**



**MF 6616 EFD6**  
2014, 5892 Hrs,  
Tyres: 480/70 R28 (10%)  
580/70R38 (10%)  
**£44,250.00**



**MF 7716 ESD6**  
2021, 1228 Hrs, 170 HP  
Tyres: 480/65R28 (85%)  
600/65R38 (85%)  
**£87,000.00**



**MF 8S.205 EFDE**  
2021, 675 Hrs, 205 HP  
Tyres: 600/65R28 (90%)  
650/65R42 (90%)  
**£127,500.00**



**FENDT 516**  
2021, 2750 Hrs, 160 HP  
Tyres: 540/65R28 (50%)  
650/65R38 (50%)  
**£98,500.00**



**FENDT 724**  
2017, 6545 Hrs, 240 HP  
Tyres: 540/65R30 (60%)  
620/70R42 (70%)  
**£89,000.00**



**FENDT 828**  
2017, 5649 Hrs, 280 HP  
Tyres: 600/70R30 (30%)  
710/70R42 (100%)  
**£110,750.00**



**FENDT 936**  
2014, 7250 Hrs,  
Tyres: 600/67R34 (30%)  
710/75R42 (30%)  
**£85,000.00**



**FENDT 942**  
2019, 2500 Hrs, 415 HP  
Tyres: 650/65R28 (80%)  
710/75R42 (80%)  
**£229,500.00**



**VALTRA T174EA**  
2020, 695 Hrs, 170 HP  
Tyres: 540/65R28 (90%)  
650/65R38 (90%)  
**£75,000.00**



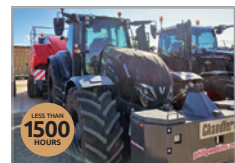
**VALTRA T175 EV**  
2022, 265 Hrs, 190 HP  
Tyres: 540/65R28  
650/65R38  
**£109,500.00**



**VALTRA T214V ST**  
2020, 1941 Hrs, 215 HP  
Tyres: 600/65R28 (100%)  
650/65R42 (100%)  
**£104,500.00**



**VALTRA T234V ST**  
2020, 1654 Hrs, 235 HP  
Tyres: 600/65R28 (100%)  
650/75R38 (100%)  
**£108,000.00**



**VALTRA T235D**  
2022, 1151 Hrs, 220 HP  
Tyres: 600/65R28 (100%)  
650/75R38 (100%)  
**£127,500.00**



**JCB 531-70**  
2017, 3050 Hrs, 145 HP  
3100kg lift, 7m Reach  
Tyres: 460/70R24 (40%)  
**£59,500.00**



**JCB 532-70**  
2019, 2257 Hrs, 130 HP  
7m Reach, 3200kg Lift  
Tyres: 460/70R24 (20%)  
**£60,000.00**



**MERLO TF35.7**  
2019, 2083 Hrs  
7m Reach, 3500kg lift  
460/70R24 (40%)  
**£54,750.00**



**MANITOU MLT 634**  
2016, 6577 Hrs  
6m Reach, 3400kg Lift,  
460/70R24 (30%)  
**£36,000.00**



**MANITOU MLT 737**  
2022, 6 Hrs, 130 HP  
7m Reach, 3700kg Lift,  
Pallets Tines Carriage  
**£89,500.00**

Errors and omissions excepted. All prices +VAT

**USED AG SALES: Graham Peall 07970 121109 | Andrew Elms 07860 464753**