

Wrights

FARMING REGISTER

INSIDE THIS ISSUE

Brokers' listings, p33

Sprayers, p12

Grass & Landscaping, p16

Dairy Farming, p18

Cereals Preview, p20

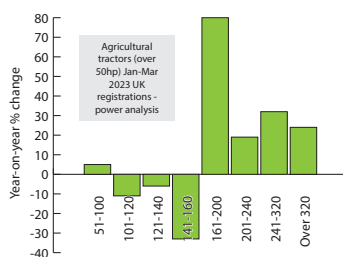
See one of UK's first land-levelling machines at Cereals

- see p20



JCB TOAST CORONATION IN STYLE, p6

Bamford family present over 8,500 hampers to mark occasion



MORE TRACTOR POWER ON UK FARMS, p3

First quarter registrations up on higher-powered machines



MOST POWERFUL TRACK LOADER FROM BOBCAT, p24

New range to be unveiled at Plantworx event



Cereals

THE ARABLE EVENT



Thoresby Estate

Tues 13th & Wed 14th June 2023

New Venue: Thoresby Estate, Nottinghamshire, UK

Working Demos  Knowledge Exchange  Agronomy Zone



LEARN MORE & REGISTER TODAY AT

CEREALSEVENT.CO.UK

AgAnalyst
Academy



Agronomist &
Arable Farmer



ISUZU
THE PICK-UP
PROFESSIONALS



syngenta



Precision
Farming Partner

Innovation &
Technology Partner

Event Guide
Publisher

Education
Partner

Automotive
Partner

Trials Partner &
Soil Hole Sponsor

Registration
Sponsor

Sprays & Sprayers
Arena Sponsor

Silver
Sponsor

Lanyard
Sponsor

wrightsregister.com
Wrights Farming Register

EDITORIAL

Acting Editor: Paul Appleton
Email: editor@wrightsregister.com
Designer: Anita Waters

ADVERTISEMENT SALES

Fran Taylor: 01323 849890/07764 230515, sales@wrightsregister.com
Natalie Brough-Darby: 07921 088407, natalie@wrightsregister.com

ADVERTISEMENT PRODUCTION

Publishing Works, Suite 3/4, Stanhope Hall, Boston Road, Horncastle LN9 6NF
Sue Fixter: 01507 524496
sue@publishing-works.com

MANAGEMENT

Managing director: Shaun van den Bos
Publishing consultant: Paul Appleton
Subscription marketing manager: Sue Fixter

BROKER SERVICE

Lincolnshire, Yorkshire, Humberside and the North East
Shaun van den Bos Tel: 07850 978188 email: shaunvandenbos@sky.com

East Midlands & East Anglia
Robin Sparrow Tel: 07931 886601 email: robinsparrow@btinternet.com

South West
Peter Hill Tel: 07818 451314 email: hillagri@btinternet.com

SUBSCRIPTIONS

6 issues of Wrights Farming Register
UK subscription price: £15.00
Europe subscription price: £19.00
USA subscription price: £19.00
Rest of World subscription price: £22.00

Contact us

Customer service email address:
subs@wrightsregister.com
Customer service and subscription postal address:
Wrights Farming Register, Customer Service Team, Suite 3/4, Stanhope Hall,
Boston Road, Horncastle LN9 6NF

Website

Find current subscription offers at wrightsregister.com
Buy back issues at wrightsregister.com/backissues or call 01507 524496

PRINTING

Mortons Print, Lincolnshire, 01507 523456

PRIVACY POLICY UPDATE

Wrights Farming Register Ltd takes your personal data very seriously. For more information of our privacy policy, please visit wrightsregister.com/privacy-policy/. If at any point you have any queries regarding Wright's data policy you can email our data controller at data.controller@wrightsregister.com.

Wrights Farming Register 2023 © All Rights Reserved. Wrights Register is a trading name of Wrights Farming Register Ltd. Reproduction in whole or in part is forbidden except with permission in writing from the publishers. Note to contributors: articles submitted for consideration by the editor must be the original work of the author and not previously published. Where photographs are included, which are not the property of the contributor, permission to reproduce them must have been obtained from the owner of the copyright. The editor cannot guarantee a personal response to all letters and emails received. The views expressed in the magazine are not necessarily those of the Editor or the Publisher. Wrights Farming Register Ltd accepts no liability for products and services offered by third parties.

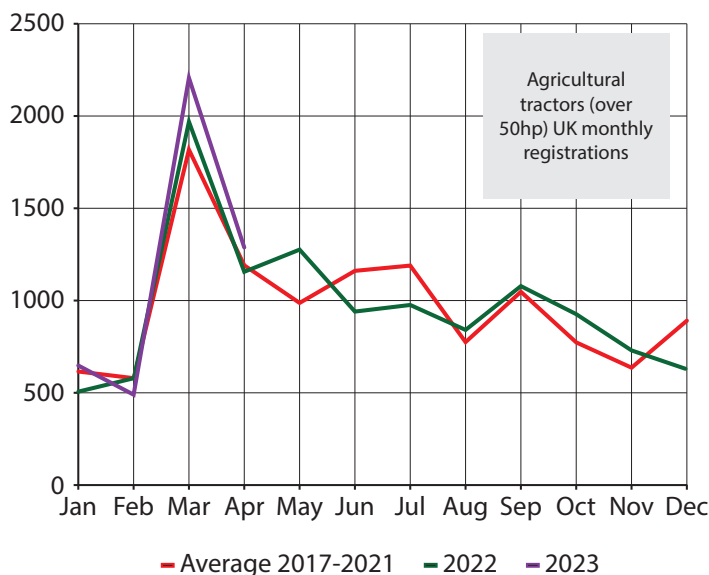
Wrights Farming Register Ltd uses a multi-layered privacy notice, giving you brief details about how we would like to use your personal information. For full details, visit wrightsregister.com, or call 01507 524496.

If you have any questions, please ask as submitting your details indicates your consent, until you choose otherwise, that we and our partners may contact you about products and services that will be of relevance to you via direct mail, phone, email or SMS. You can opt out at any time via email: data.controller@wrightsregister.com or 01507 524496.

Growth in higher powered tractor registrations

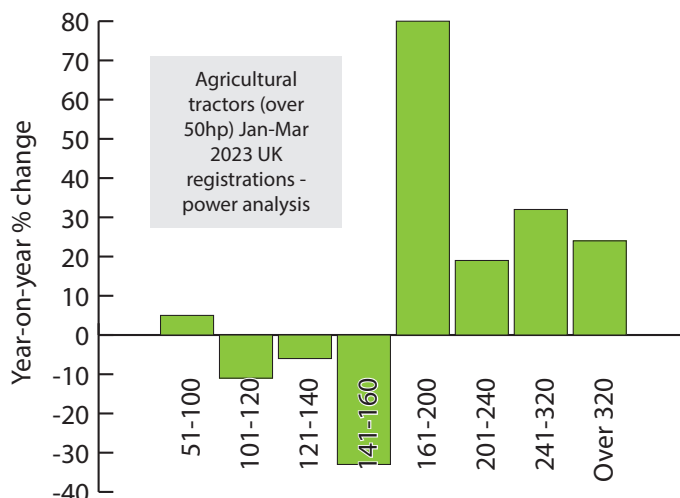
The Agricultural Engineers Associated (AEA) have released the latest tractor registration figures for the UK, with sales of tractors over 50hp showing an increase over the same period last year.

Figures show that April saw 1,280 machines registered in April, 11% up on 2022, continuing a trend seen during the first three months of the year. Stephen Howarth, AEA's agricultural economist says; "This is the highest total for the time of year since 2019 as manufacturers continue to work through the backlog of orders which built up last year due to supply chain disruption."



Growth has been consistent so far for 2023, with a total of 4,634 machines registered over the first four months of this year, 10% more than in the same period last year.

Most of the growth in registrations over the first quarter of the year has been for machines of over 160hp. The 161-200hp range has seen particularly high growth where 80% more tractors have been recorded than in January to March 2022. Registrations of machines over 200hp have also increased, this time by more than 20% compared with a year before, but there have been fewer sales of tractors under 160hp in the opening three months of 2023.



“The trends in higher power bands may partly reflect improved availability, as supply chain disruptions ease,” says Stephen, “however, it probably also reflects strong demand from arable farmers who have had a good couple of years, due to strong prices.

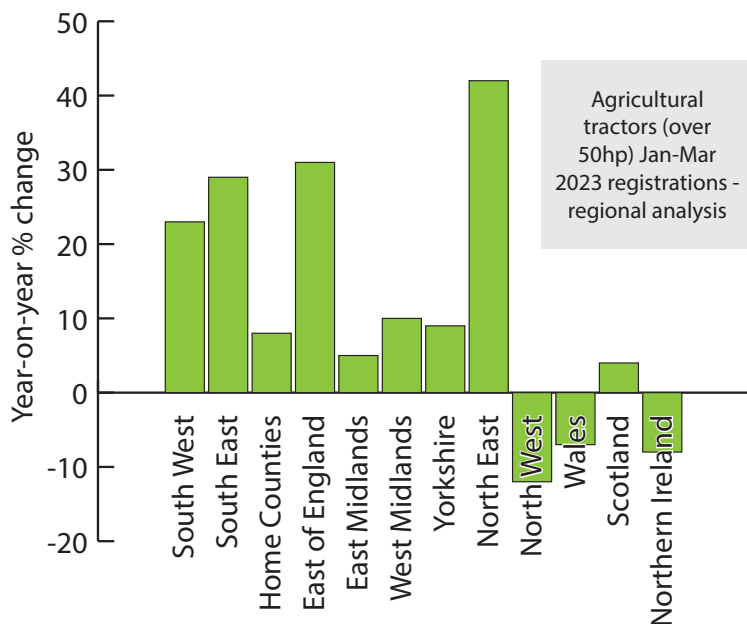
Although the largest increase has been seen in the 161-200hp sector, the increases are significant in the even higher power bands. Registrations of 201-240hp tractors are up by more than a fifth to 536 units, tractors from 241-320hp by a third to 197 units and registrations above 320hp have also increased by nearly 25% to 128 tractors.

In stark contrast to these increases, the only sector that showed an increase at the lower end of the power scale was the 50-100hp bracket (+5.3%). Registrations in all other power bands have reduced; 101-120hp (-11.5% to 376 units), 121-140hp (-6.9% to 339 units) and 141-160hp (down by a third to 464 units).

These rates of increase are also reflected at a regional level, as registrations have increased across most of England, with the exception of the north-west. The biggest increases were in the South of England and East Anglia, as well as the north-east, although the latter region accounts for only a small proportion of tractor sales.

In contrast, registrations were lower than last year in Wales and Northern Ireland and only slightly higher in Scotland, all parts of the UK dominated by livestock farms, which fared less well financially in 2022.

Further information at <https://aea.uk.com>



Electric 4x4 progresses with Ineos

Ineos Automotive is developing a new battery electric 4x4 vehicle in conjunction with automotive supplier Magna. Smaller than the Grenadier, production will start at Magna's Graz facility in Austria during 2026.

The two companies previously worked together on series engineering and development for the Grenadier station wagon and pick-up models. Part of the development process for the new 4x4 will include a rigorous testing programme on Austria's Schöckl mountain, which is close to Graz.

Deepening the collaboration with Magna is a natural next step says Lynn Calder, CEO of Ineos Automotive; “We will use the Grenadier as a springboard for our continued growth as a global automotive brand with this third model line.”

The Horsch Cruiser SL range, now available through Chandlers



New front loaders for Kioti tractors

Spanish manufacturer Tenias have designed a new front loader specifically for the Kioti HX range of tractors. Maximum lift capacity is 1,755kg and maximum height 4,301mm. Hydraulics are connected using quick-connect couplings, a Euro 8 quick-release headstock is standard and removing the loader from the tractor is said to be “rapid”.

A hydraulic rear-hitch, with hook and clevis options, is also available for HX tractors. This was designed by Dutch manufacturer Pateer to fit the HX tractors and they hydraulically telescope outwards to help with attaching implements.

Currently, two HX tractors are available in the UK – the 100hp HX 1001 and 115hp HX1201. Both are available with PTO engine boost, a 32 x 32 power shuttle gear box and selectable four-wheel drive.

A five-year, 3000-hour warranty is standard.

Kioti tractors have been produced since 1968 by the Daedong Corporation, South Korea's largest agricultural and compact tractor manufacturer.

Horsch partners with Chandlers

The full range of Horsch cultivation, drilling and spraying equipment is now available through four Chandlers Farm Equipment depots.

Chandlers acquired Ross Farm Machinery earlier this year. Operating as Chandlers RFM, it represents the Horsch franchise for an area covering the west of the M5 at Bridgnorth in Shropshire, Ross on Wye in Herefordshire, Martley in Worcestershire and Raglan in Monmouthshire.

"We're delighted to now be able to offer our customers state-of-the-art sprayers and the market leading direct drill, which is much in demand in today's farming practice, not to mention the go to disc-tine drill for those preferring to stay with min-till practices," explains Russ Brett of Chandlers Farm Equipment, who says that the Horsch product ranges complement the company's existing franchises.

"Some years ago, RFM sold Horsch products via the Simba franchise, which then became unavailable. When Fendt withdrew from the trailed sprayer market in 2022, this left a large hole in our product offering. Trailed sprayers, direct drills and min-till seeding equipment are a vital sector of the machinery market for Chandlers west of the M5," he adds.

The business has ordered a large stock of Horsch machines and will have parts stock available from June 2023.



SHARNFORD TRACTORS LTD

Lodge Farm, Broughton Rd, Frolesworth, South Leics. LE17 5EH

Tel: 01455 209300 Mobile: 07831 400485 / 07836 661442

www.sharnfordtractors.co.uk

New in stock for 2023

CLAAS Greenline Machinery now available from Sharnford Tractors Ltd;
Mowers, tedders, rakes and balers; call for details.



Tractors, Telehandlers, ATV's.

CLAAS ARION 650 CIS+ 184Hp, 50K, 650/540, 4 spools, front links. New & demo units.
CLAAS ARION 420 C 100Hp, 420 & 340 Tyres. Loader brackets. New in stock.
CLAAS ARION 430 CIS 115Hp, Loader brackets. New in stock.
CLAAS ARION 440 CIS 125Hp, 540/380 Tyres. New in stock.
CLAAS AXION 800 CIS '18 reg. 205Hp, 3500 Hrs. 650/540, 50K, Fr.links.
CLAAS ARION 620 CIS '64 reg. 145Hp. 40K fitted FL120 loader. 650/540 Tyres.
RENAULT R3042 1949. Vintage 2.0 Litre petrol tractor. In show condition.
MANITOU MLT635-140V+. MLT630-115V. New units now in stock.
MANITOU M130D. Diesel Ind forklift. 3T cap. 4.7Mtr free lift mast. S/Shift. Demo
MANITOU MLT635-130PS. '19 reg. 5500 Hrs.
MANITOU MLT634-120 LSL. '07, in stock.
MANITOU MLT634-120 '11 reg.
MANITOU MLT2600. '89, in stock.
MANITOU MLT725 1994 model. Very tidy.
MANITOU Buckets and manure grabs, in stock.

New Machinery now in stock

CLAAS DISCO Mowers/Mower conditioners, VOLTO tedders, LINER Twin rotor Rakes,
ROLLANT round baler, all in stock.
FLAIL Mowers from Concept, various models in stock.
PORTEQUIP 13T Bale trailers, 26' & 22', in stock.
PORTEQUIP Lamb & Calf creepers, Cattle feed trailers, all in stock.
BALE HANDLERS; Alburt, Fleming & MX, all in stock.
FLEMING Toppers, Aerators & Rolls, in stock.
LOGIC ATV Flail mowers, aerators, trailers, all in stock.
ROTAVATORS from Concept. 1.8 & 2.1Mtr, new in stock.

BUNNING 120 Lowlander spreader. Slurry door, WA PTO, in stock.
NRH 6.3 Mtr 24" Hyd fold rolls c/w breakers & shatterboards. New in stock.
SUMO GLS 3 Leg grassland subsoiler. Auto reset legs. New in stock.
KIDD 450T Trailed straw shredder, new in stock.
EINBOCK 6 Mtr harrows & Hacketts chain harrows, in stock.
MOULTON & BROWNS Galvanised yard scrapers & Silage pushers in stock.
CHERRY Buckets, Manure grabs, Bag lifters, Man platforms all in stock.

Used Machinery in stock

CLAAS QUADRANT 2200 Square baler, 2003. Call for details.
SHELBOURNE Powerblade HD870 Tele. 2016. 5' head. 4pt linkage P.O.A
SHELBOURNE PowerMix Pro 13 feeder, 2019. Very tidy.
SUMO QUATRO 3 Mtr, c/w Sumo seeder. 2014. Excellent..... P.O.A
SUMO 3 mtr Front tyre press, ripper tines. RABE DUPE 9/9 Furrow press..... P.O.A
KUHN HR4002 / ACCORD Combi unit. Fully recon, looks like new P.O.A
STRAW SHREDDERS. McHALE C460, KIDD 450T, TEAGLE 8080 P.O.A
KRONE AM243CV Mtd mower cond. In stock..... P.O.A
KRONE V150 Comprima r/baler, 2012 KRONE KW7.70/6.7 Tedder..... P.O.A
BALLAST ROLLS 8' & 6'6". LOGIC ATV Flail, 16Hp.
TOPPERS. In line. Choice from FLEMING & FOSTER 6' P.O.A
OFFSET TOPPERS Major 800SM & Twose 8' P.O.A
FLAIL Topper Weaving 2.6Mtr, 2018 P.O.A
ALO SHEAR GRAB Triple ram on Manitou brackets..... P.O.A
DRUM MOWERS Choice TALEX ECO 185 (2020) KM25, both in stock.
620/70R30 Michelin tyres c/w wheels, suit NH..... £1,500.00.

ALL PRICES PLUS VAT



Blaston Show, Sunday 25th June, Slawston, Mkt Harborough LE16 7FA
Ashby Show, Sunday 9th July, Heather, Leicestershire, LE67 2TD

"SUPPORTING FARMING AND THE COUNTRYSIDE"



JCB TOAST KING CHARLES III WITH HAMPERS



Lord Bamford presents one of the first Coronation gifts to employee Kimberley Brandrick during one of the special celebration lunches, which was held on JCB's Wootton Estate.



Coronation party time for JCB employees.

Thousands of JCB employees and those of its UK agents celebrated the Coronation in style on 6th May thanks to a generous commemorative gift from owners, the Bamford family.

More than 8,500 special hampers were produced to mark the historic event thanks to an idea from Carole Bamford, wife of JCB Chairman Anthony Bamford.

Lord Bamford said: "JCB has a long history of commemorating significant moments in our national history. The Coronation really was an occasion to remember, and I am delighted we were able to mark the event with a gift from our family to our employees."

Financial Controller Chet Tanna, who has worked for JCB for 30 years, said: "It's an absolutely fantastic gesture from the Bamford family. I can't imagine there will be many other companies marking this historic occasion in such a wonderful way."

The special hampers contained two Coronation mugs, shortbread, mints



Getting into the Coronation spirit at the JCB World HQ.

and loose leaf tea in commemorative tins – all designed by renowned artist and illustrator Hugo Guinness. A mammoth distribution operation swung into action to ensure employees had their gifts in time for the celebrations, with the bulk of the deliveries starting as early as 4am the previous day as nightshift employees finished work.

The presentation of gifts rounded off a week of Coronation celebrations at JCB after thousands of employees at plants across the UK took part in a company-wide street party. JCB treated employees to a two-course celebration lunch over four days with classic British cuisine served on traditional street party trestle tables.



Celebration time at JCB's World HQ in Rocester.

STAMFORD TRACTORS

MILL FARM, WILSTHORPE, STAMFORD PE9 4PE - 5 miles east of Stamford

USED TRACTORS & VEHICLES

JOHN DEERE 6810X4 F/ LINKAGE AIRCON, TIDY, X REG.....£19750
 FORD 7840 x 4 SLE Special L Reg 6400hrs.....£POA
 FORD 3600 S.CAB P Reg Fitted Power Steering Grass or Ag Tyres
 ROADLESS 95 Lift and Linkage.....£POA
 SUPER MAJOR L drive
 FORD 5000 pre force, power steering (f reg) v.tidy.....£POA
 D Brown 990 IMP c/w DB Loader Power
 Fordson DDN Major c/w Howard reduction box will split ex
 trencher.....£POA
 HONDA Quad 300 cc.....£1795
 TURNER YEOMAN OF ENGLAND MK3.....£14,000
 ROADLESS E27, P/P Half Track.....£10,500
 FERGUSON 20, petrol, re-sprayed, new tyres, ready to
 rally.....£1950.00
 s/h DUNCAN CAB TO FIT 4000.....£750.00
 10 LEYLAND WEIGHTS EX 285.....£POA
 JOHN DEERE WEIGHTS - Late Type.....£POA
 8-10-14 X 45KG WAFER WEIGHTS for new holland - ford 10
 series.....£POA
 10 -40 -60- SERIES WEIGHTS and weight blocks.....£POA
 NH 60 Series Wafer Weights 45kg Fan.....£POA
 S/H TRACTOR WEIGHTS to fit various makes- phone
 for price and availability ford q cab & safety cab parts,
 doors, rear windows etc. phone for price & availability
 david brown mushroom cab doors.....£POA
 P.U.H'S TO FIT - MAJOR'S / super major's / & lawrence edwards
 conversion.....£POA
 SPOOL VALVES TO FIT 5000 / 6000 / 5600 / 8100 / 8200 *
 various.....£POA
 ASSISTOR RAMS FOR 5000 / 56 / 66 / 76 / 81 / 82 e.t.c. *
 various.....£POA
 VARIOUS ROLL BARS to fit ford / fordson / m.f. and
 ferguson.....£POA
 FRONT LINKAGE TO FIT MOST 100 HP TRACTORS.....£450
 HOWARD TRENCHER on Rotor Pads Based on Ford 5000
 PreForce Creep Box OR put Back of Tractor as Classic Tractor
 £4,500
TELEPORTERS & LOADING EQUIPMENT
 Massey Ferguson Loader to fit 135
 Armer Salmon Beet Cleaner - diesel engine continental webb
 HD Manure fork to fit telescopic hydraulic.....£POA
 CHILTERN Toe Tip 1.8m Euro 8 Bucket.....£1150
 MCCONNEL 3 POINT Linkage Fork Lift.....£750
 BROWNS GB900 LOADER, Ex Ford 5000 - 6600 - 7600 + ten
 series.....£450 - £850.00
 FARM HAND F12 LOADER TO FIT FORD 500/6600.....£750.00
 FORD FRONT END POWER LOADER D.A., To fit Ford
 4000/5000/7600.....£475.00
 FORD HORNDRAULIC LOADER, c/w 3 Spools, Hyd Ram,
 Pipework.....£295.00
 HYDRAULIC LOADER to fit Dexter.....£375.00
MUCK / FERTILISER SPREADERS / SPRAYERS
 Knight Sprayer Mounted 18m or 12m Electric Controls.£1250
 VARIOUS SPREADING DISCS to fit Zau Amazone
 Spreaders.....£POA
 Vicon 802 Vari Spreader
GRAIN
 Grain Pusher 16ft long 8ft wide tubular design
 FAN P.T.O. DRIVEN Make: ventacrop t45 quantity of standard

galvanised steel grain laterals, 4' x 2'.....£POA
 CHILTON GRAIN BUCKET, tip toe, euro 8 fittings.....£950.00
DRILLS/POWER HARROWS/AIR DRILL
 3M ACCORD DA DRILL, with or without power harrow
 KUHN POWER Harrow 3m c/w packer.....£1350
 4m Accord DA Power Harrow mounted Drill.....£950
 CARRIER 4M mounted spring tine tram liner. Large hopper.£POA
 MF30 4M Disc Grain Drill, 23 Disc Coulters.....£850.00
 PARAMETRE PAN BUSTER TINES 12FT MANUAL FOLD £325.00
 3M FLEXICOIL TO FIT Power Harrow Kuhn / Lely -.....£POA
 3 & 4 MTR CRUMBLER, EX Kuhn Power Harrow.....£POA

CULTIVATION

COUSIN 36" HD Press 4 meter trailed.....£2250
 SIMBA DISC MK1 3.7 F/C R/C.....£3200
 Simba MK3B 10' F/C -R/C Disc.....£POA
 60" HOWARD Rotavator HB60 inch.....£POA
 NICHOLSON Hydraulic Folding Spring Tine 15ft.....£450
 BROWNS Pan Buster folding Cultivator 12/14ft.....£750
 BOMFORD 22' Ridged End Toe c/w Power Track Tines and Roller
 8FT MOUNTED Chain harrows.....£650
 Kongsilde Spring Tine c/w Rotorcrates 16ft.....£850
 13T KONGSKILDE VF VIBROFLEX, 13 Tine.....£950.00
 KONGSKILDE VF15 CULTIVATOR Folding Frame c/w depth wheels
 £1250 HOWARD 70" ROTOVATOR.....£850.00
 NEW HOWARD 70" rear door to fit rotoator.....£POA
 DOE CULTIVATOR, 7 Tine, c/w Packer Roller, 3M Working
 Width.....£875.00
 9FT MARKSTIG spring tine cultivator.....£350.00
 HEAVY DUTY PIGTAIL cultivator - 10'.....£550.00
 PARMITER TOOL CARRIER.....£550.00
 12 FOOT BROWNS 3 bar panbuster.....£550.00
 PARMITER MOUNTED folding frame 7 zig zag harrows.....£575.00
 TRAILED H/D CHAIN HARROWS, 12FT Wide, 1/2FT Dia. £475.00

HAY EQUIPMENT

SKH Haybop Kuhn
 5' Rotary Mower Big B.....£POA
 VOTEX 9' ROTARY TOPPER.....£850.00

POUGHS

DOWDESWELL DP 73 4-1.....£1750
 Ransome TSR102 Hy Turnover U.C.N. Disc & Skims.....£1250
 DOWDESWELL MA160 6+1, DD bodies.....£4250
 RANSOME TSR 108, U.C.N 3 Furrow Plough, c/w Depth Wheel &
 Transport Bracket suit 7000.....£1250.00
 BAFMORD MTD 3F PLOUGH Model 14/30, c/w Disc & Skims,
 Ley Bodies.....£395.00

MOLE DRAINER / SUBSOILERS

RANSOME Single leg mole drainer with disc coulters.....£1750
 RANSOME C90 Twin Leg Swivel Subsoiler.....£1750
 RANSOME subsoiler c/w 2 swivel legs.....£1050
 DOE / COUSINS 2 LEG SUBSOILER c/w Depth Wheel.....£650.00
 MOLE DRAINER.....£550.00
 RANSOME C83B 2 leg subsoiler choice.....£550.00-£700.00
 FERGUSON Single Leg Buster Subsoiler, Disc Sprung.....£650.00
 COUSINS TOOL BAR c/w single leg mole.....£POA

ROLLS

Wrekin Cambridge Rolls Gang 22" x 15.....£650
 LELY Ringmaster 6 meter Hydraulic Fold
 Breaker Rings.....£2750
 GRAYS 8' x 30 " Ballast roll.....£850
 9' FLAT ROLL, 20" Dia, Not Ballast Type.....£POA
 3' x 20" Flat Roll not ballast type.....£300.00
 FLAT ROLL 4' x 2'.....£POA

TRAILERS

New JPL Low Loader 19'x5' Beaver Tail 19 Ton C/W ramps.£13200
 New Nugent P3116H Plant Trailer c/w Full Ramp Door 10'3" x 5'3"
 Martin & Markham 6 ton 2 wheel tipping trailer. VG.....£1250
 Tye 4 ton High Lift Grain Trailer Steel Floor.....£12500
 ARCTIC Nootboom 3 Axle Air Hydraulic Flip Ramps.....£12500
 PETITE, MARTIN Markham, Harford 3 / 4 ton trailers - VARIOUS
 from.....£650
 IVOR WILLIAMS T/A 16ft LM166 C/W side mounted HIAB
 CRANE.....£2950
 SHOOT TRAILER 2 SINGLE AXLE SPRUNG 10' X 6'.....£650
 EARLY FERGUSON TIPPING TRAILER.....£550
 3T TIP CART, Steel Floor.....£450.00
 HAYFLAKE TRANSPORTER TRAILER.....£POA
 Various 2 wheel Tipping Trailers - 3/4/6 ton From.....£450.00
 4T TRAILER CHASSIS AVAILABLE - Suit use
 for Water Tankers ** PRICED TO SELL

WHEELS & TYRES

Various Row Crop Wheels in stock - Please telephone for sizes
 Pair of 124.4/11 x 32.....£POA
 One x 18.4-15x 26.....£POA
 TERRA TYRES 66x43x25. Swop centres.....£950
 FORDSON MAJOR spade wheels.....£POA
 NEW PAIR 12.4X24 TRACTOR TREAD.....£POA
 DUAL WHEELS 18.4 x 38 Taurus stocks c/w clamps.....£POA
 DUAL WHEELS 18.4/£16.9 x 38 16.9 x 30 From.....£400.00
 STOCKS DUAL WHEELS 20.8 X 38 c/w Clamps.....£POA

COMBINES, HAY, SILAGE, RAPE SWATHERS

VICON ACROBAT.....£150
 ADAMS 4 REAR ROUND BALE CARRIER.....£POA
 COOKES FLAT 7 SLEDGE.....£550.00
 BALE SPIKE to fit JCB Q Fit.....£POA
 VARIOUS BALE SPIKES **CHEAP TO CLEAR
 COMBINE MATCO 4' side knife.....£450.00
 FLAT 8 BALE FORK Choice.....£POA
 A Selection of Combine Side Knives.....£POA
 BOMFORD BUCKRAKE.....£POA
 IngersollRand Triled Compressor 130W - suit blow down combines.....£POA
 Ritchie Big Bale Handler JCB Q-Fit as new.....£POA
 Meije Flat 8 Sledge

HEDGE CUTTER

McConnel Finger Bar Swingtrim Hedger (Ideal Leyland hedge) to fit
 Compact.....£3500

MISCELLANEOUS

Range Rover Sport Electric Deployable TowBar off 2020 yr model Very Little use
 FORD Super Q cab roof.....£POA
 Kidd Saw Bench £950
 FORD Q Cab rear windows, roof, door, side window & windscreen.....£POA
 MCCONNEL PTO driven saw bench.....£950.00
 SAGAR LARGE 3 Phase Electric Circular Saw Bench & Assorted Saw Blades £650.00
 YAMAHA Diesel Engine Generator on trolley.....£POA

VINTAGE/CLASSIC/COLLECTABLES

DAVID BROWN Albion P.U. V/T Pick Bailer
 RANSOME TSF200 4F PLOUGH c/w Full Set of Discs and Skims.....£925
 RANSOME TSR106, Furrow Plough, on land, suit Classic.....£950.00
 RANSOME TSR103, 3 Furrow Reversible Plough c/w UCN
 Skims & Disc HYTYO.....£1350
 RANSOME TS90, 3 Furrow Plough, YL Bodies 12" Furrows c/w Kims & discs£750
 DOE TOOL CARRIER.....£POA
 J.F MS105 WRAP AROUND COMBINE harvester 10ft.....Offers

ALL PRICES ARE + VAT



GRAIN
PUSHER
Tube Design
15'6"x8' Pin
& Cone



New Marston
Flat Ballast
10' x 30"
roll POA



Simba MK3B 10' F/C - R/C Disc POA



Kubota Rotavator 1.2m as new POA



Ford 7840 SLE Special



Ford 3600 Power Steering

PHOTOGRAPHS AVAILABLE UPON REQUEST - EMAIL OR POST
 TEL: 01778 560111 • MOB: 07860 336044 • FAX: 01778 560160

Email: stamfordtractors@btconnect.com

ECONOSPRAY *The UK's No 1 Spot Sprayer*



£214.93

+VAT

**98L Northstar Spot Sprayer
c/w 14ft Broadcast Boom**

**ENSURE YOUR PROPERTY
IS COVID SECURE!**

With a Spraytech Fogger



Spraytech

Tel: 01566 772208 www.spraytech.uk.com

Quick Hitch
towing systems

eurolinehire@outlook.com
07768 900762 www.quickhitchtowing.co.uk



ALSO AVAILABLE AT:
ISUZU
MAIN DEALERS

Philip

WATKINS



QUAD TILL

Cultivate 150mm deep sub soil 350mm deep
Level and consolidate in one pass.



TRAILED PRESS

Cultivate 150mm deep
Level and consolidate
on stubble or ploughing



Trail-Till
Mounted 2.4m - 3.6m



**TRAILED
Trail-Till**

Hall Farm, Stainton, Nr. Rotherham, S. Yorkshire S66 7QY

Tel: 01709 798522 Fax: 01709 790752

Email: info@philipwatkins.co.uk

See our recently updated website

www.philipwatkins.co.uk

AVANT AWARD FOR CHICHESTER DEALER

A small business based in West Sussex has received national recognition for its knowledge, professionalism and customer service at a prestigious awards ceremony.

Chichester Farm Machinery was presented with the Avant 'Dealer of the Year' award in February following an exceptional period of sales, servicing and repairs. The award also recognises the company's aftercare, parts and product knowledge.

Managing Director Lewis Ramm, who attended the event in Norwich, together with Sales Manager Steve Everton, said: "We were delighted to have even been considered for such an award, so to then be named as 'Dealer of the Year' was a true honour and a privilege."

He said the award was the culmination of hard work and determination from the whole team. "We may only be a small company but we're a strong and effective one, with staff who are really committed to their jobs. Receiving an award like this makes it all worthwhile and we couldn't be more pleased."

Chichester Farm Machinery, based in the village of Runcton just outside Chichester, has been an Avant main dealer since 2018 and specialises in all types of farm and garden machinery sales and maintenance. Avant Tecno are the UK importers of Avant articulated loaders from Finland.



LEFT:
Chichester
Farm
Machinery
Director, Lewis
Ramm (left)
and Sales
Manager,
Steve Everton
show off
their award
alongside one
of the Avant
loaders.

Polaris launches 0% finance offer for business customers

Polaris Off Road Vehicles has announced an exclusive two-year 0% finance offer for business customers purchasing Polaris models in the UK.

Running in conjunction with new finance partners, DLL, a global finance brokerage with more than 50 years of experience, this offer is available on all of its adult products, running from 1st May to 30th June this year.

"There's a reason why Polaris is the global leader in Powersports products. Here in the UK, it's a trusted brand for farmers, landowners, businesses, sport and leisure owners alike, and the list doesn't stop there," said Richard Coleby, National Sales Manager at Polaris UK & Ireland. "With endless applications and industry-leading capabilities, it's one of the most broad-spectrum product ranges on offer in the UK today, and all of our products are designed, tested and validated in a working market."

"Our new finance offer adds another option for customers who want to get their hands on one of these machines and at the same time, spread the cost of the vehicle over two years, completely interest-free."

Andrew Guest continue trading despite loss of figure-head

Kuhn Power Harrow specialist, Andrew Guest Ltd of Cotham near Newark, has announced the sad passing of its founder, Andrew Guest, who passed away suddenly on 22nd March, aged 63.

A long-standing friend and supporter of *Wrights Farming Register*, our condolences go to his wife Wendy, family and his very many good friends. Andrew died in the workshop, doing what he loved to do. The firm's Liz Birch told *WFR*: "The business continues to trade in his memory."

Bunning to show Lowlander 120 Hybrid at Royal Highland

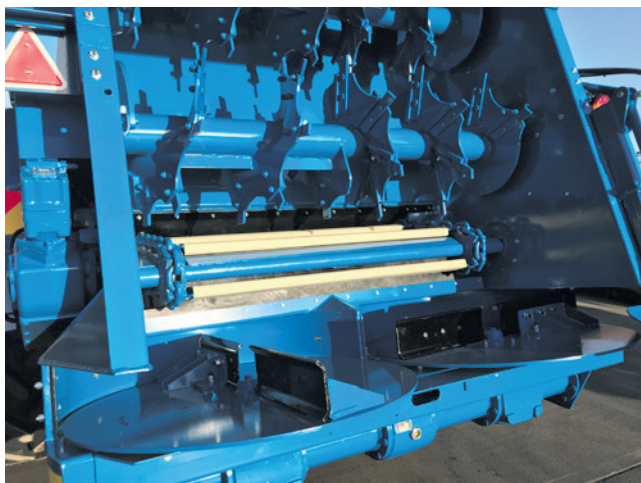
At this year's Royal Highland Show, G.T. Bunning and Sons will be showing a Lowlander 120 Hybrid (HY) Horizontal beater and spinning disc (HBD) model that offers users the option to increase output and improve material shredding on smaller spreaders.

The smaller Lowlander 105, 120 and 150 Mk4 HBD spreaders are equipped as standard with a 1,500mm-wide beater design. However, users looking for greater output from these machines can choose a 1,830mm HY beater option, that uses the same processing design fitted to the bigger spreaders from the Lowlander 150 HD (Heavy Duty) up to the tri-axle Widebody 380 HD HBD.

The HY option uses the Widebody beater design on the three Lowlander 105, 120 and 150 Mk4 HBD models, and Ben Johnson, UK and Ireland sales manager for Bunning, says the upgrade is a useful addition for operators requiring increased output, but wishing to retain the benefits of a smaller machine; "Upgrading to the Widebody beaters allows greater output from a smaller spreader and means more material can be processed on to the discs than with the standard system. The increased width of the beaters can deliver a more even flow of some products at high rates, which, in turn, can give wider and more consistent spread patterns."

Bunning's HBD range uses horizontal beaters to break down material before spreading via the 1.1m wide spinning discs. The design allows a wide variety of products, such as farmyard manure, compost, chicken litter and sewage sludge, to be spread accurately to 30m+.

Visitors to the Royal Highland Show at Ingleston, Edinburgh on Thursday 22nd to Sunday 25th June can view a Lowlander 120 HY HBD on Bunning's display stand H101 (A).



Back end of the Lowlander 120 HY HBS.

P&D

ENGINEERING (BREDON) LIMITED



www.panddengineering.com

New and Used Machinery Offers

Good range of quality used Merlo telehandlers currently in stock

New Merlo 33.7-115. Aircon, Boom suspension, air seat, hitch.....	£POA
New Merlo 27.6 Plus.....	£POA
2019 Merlo 42.7 Telehandler. 1,535 hours. Excellent condition.....	£POA
2018 Merlo 38.10 Telehandler. 1,800 hours. Excellent condition.....	£POA
2003 Merlo 26.6 Telehandler. 7,500 hours. Good condition for year.....	£POA
2019 JCB 541-70 Telehandler. 3,600 hours. Excellent condition.....	£POA
2018 Kramer 357 Telehandler. 6,000 Hours. Good condition.....	£POA
2019 Vicon 5216 SC14 Round baler. Telesco Control box. Isobus compatible. 13,000 bales only. VGC.....	£23,000
New Vicon 5216 Supercut round baler.....	£33,950
New Vicon BW2600J Trailed Bale Wrapper. Low Price.....	£11,750
New Vicon Index 434 Single rotor rake.....	£5,950
New Vicon Index 464 Single rotor rake.....	£6,500
New Vicon RO-XL EDW Geospread Fert spreader 3,225 litres.....	£POA
Vicon Index 724 Twin rotor rake. New.....	£POA
Vicon Fanex 764 6 rotor tedder. New.....	£9,950
New Grasshopper 124/48 Zero Turn Mower for lawns, paddocks and orchards.....	£6,175
New McCormick X6.415HD.....	£POA
2019 McCormick X7660. Front Linkage. 3,000 hours. Excellent condition.....	£POA
Used McCormick X2.30 Compact Tractor. Nice condition.....	£16,000
Used McCormick GM50 Compact Tractor. Good Condition.....	£10,000
Used Case IH 5130 Tractor. Good condition for its age.....	£13,750
Used Kuhn MDS1142 Fert Spreader. Good Condition.....	£2,250
Used Kuhn Primor 2060M Mounted Straw Chopper. Good Condition.....	£9,750
Used Del Morin Flipper 158 Flail mower. Good Condition.....	£850
New Branson 1905H compact tractor.....	£8,950
Fleming SM Sandman Arena Grader.....	£995
Kverneland Accord Exacta TL3600 Fertiliser spreader. Good Condition.....	£3,650

See our website for complete listings and a huge selection of new and used machinery

Fleet Lane, Bredon, Tewkesbury, Glos. GL20 7EF -
01684 772912 - info@panddeng.co.uk

Vervaet Quad XL available in UK

Five brand new Vervaet Quad 550 self-propelled slurry applicators have been delivered this spring by UK importers J. Riley Beet Harvesters (UK) Ltd. Two of these new machines are equipped with an additional bespoke heavy-duty trailed-tanker to create a Quad XL.

This is a new introduction,

created to satisfy demand from progressive contractors looking to move to a 36m boom plus additional tank capacity.

In this guise the 22m³ Quad is combined with a trailed 18m³ tanker, which is made to Vervaet's specification especially for this role, to give an industry-leading

total combined capacity of 40m³. The first machines off the production-line have been purchased by forward-thinking businesses Prestons Agricultural Contractors, based at Desford near Leicester, and R. Hyslop & Son of Old Dalby near Melton Mowbray.

The trailed tanker is designed

as a capacity-enhancing buffer tank. An additional centrifugal pump is used for filling and emptying, with slurry supplied to the Quad which still handles the rate control and feeds the rear application tool which is carried by the tanker's hydraulic linkage. Both machines have been supplied with 36m



A contractor's recently-delivered Vervaet Quad XL top-dressing winter barley with digestate through a 36m Vogelsang SwingMax dribble bar.



20:20 vision: Inside the cab of the Vervaet Quad 550.

ENVIROTYRE
UK LIMITED

**TYRE & TRACK
DISPOSAL**

www.envirotire.com

Collection & environmental recycling of agri, truck, industrial, car tyres & tracks. Suppliers of heavy-duty sidewalls for silage clamps.

Collection throughout the UK. PLEASE CALL 0345 331 2747

Vogelsang SwingMax dribble bars. To enhance manoeuvrability and ensure accurate tracking in tramlines for minimal crop damage, the tanker has an electronically controlled steering system. Its four 800/70R38 tyres boast a large rolling radius to help minimise soil impact.

"We believe this to be the highest-capacity tanker outfit in the UK, but it's also an extremely flexible setup," explains Matt Carse, Managing Director of UK importer J. Riley. "The additional capacity means the machine can empty a lorry tanker completely with room to spare, or it can be brimmed to full capacity if a large nurse tank is being used. It's a straightforward design so the rear tanker can be easily dropped-off and the Quad used on its own either to tread lightly in borderline conditions, work with a strip-till machine, cultivator or injector, or run between rows of growing maize when equipped with twin-rowcrop wheels. A further option is to spec the trailed tanker with its own macerator, pump, manifold and control systems to allow it to be used

separately in its own right."

The five new Quads will be followed in early summer by an additional machine as a dedicated demonstrator for Rileys, bringing the total UK Quad population to nine machines in just over 12 months. This makes the UK the Quad's biggest market to date, and the machine the market-leader for self-propelled slurry applicators. The Riley demo machine will be equipped with a factory-fitted central tyre inflation (CTI) system and available for on-farm demonstrations over the summer months.

"It is still a relatively new product," explains Matt, "but user experiences are very promising so far. It was designed with the UK market in mind and has been fulfilling expectations. Output and reliability seem unrivalled, and its running costs are low. The fuel consumption, in particular, is one of the lowest that I've ever seen. I'm confident that with our in-house technical specialists and a large stock of parts on the shelf we can continue to provide first class backup."

CLARKE BENCH GRINDER ADDED TO METALWORKING RANGE

Sharp cutting tools are vitally important in any workshop, require less effort from the user and often making for a much safer experience! That's why bench grinders are often crucial pieces of kit, and essential additions to many working environments.

Coming soon to Machine Mart's extensive metalworking range, the Clarke CBG6SC is a useful bench grinder

designed to help keep drills, chisels, shears, etc., in top condition as well as being generally useful for metal shaping, smoothing and polishing.

This bench grinder also includes a 2in sanding belt suitable for wood, metal and plastic, a wheel dressing tool and a flexible work light for maximum precision and visibility.

Other useful features of the CBG6SC include

combined eye shield/spark arrestors for safe usage and a base-mounted on/off switch. There are also adjustable tool rests and a coolant tray.



The
British Rubber Co.

Established 90 years

Sole UK Distributor for Goodyear Vintage Tyres

Agricultural, Plant and Industrial Tyres • Next day Nationwide Delivery Guaranteed

The British Rubber Co now offers a wide range of agricultural trailer wheels and tyres

*We offer full assemblies or separate units as tyres wheels alone
New and part worn tyres are available, depending on your needs and budget*

AGRICULTURAL TRAILER WHEEL CONVERSIONS

(Subject to trailer directions and clearance)

215/75R17.5 (twin fitment) 245/70R17.5 (twin fitment)
235/75R17.5 (twin fitment) 245/70R19.5 (twin fitment)

Possible conversion - 435/50R19.5 or 445/45R19.5
On 6, 8 and 10 stud wheels

11.5/80-15.3 12.5/80-15.3

possible conversions - 435/50R19.5 or 445/45R19.5 and 285/70R19.5
On 6 stud wheels

Available in 560 60 22.5 & 560 45 22.5. Other sizes and options are available.

COMMERCIAL - AGRICULTURAL CONVERSIONS

385/65R22.5

possible conversions - 550/45R22.5 and 560/45R22.5
on 6, 8 and 10 stud

445/65R22.5

possible conversions - 550/60R22.5 and 560/60R22.5
on 6, 8 and 10 stud

Many other possible conversions - please call the office on
01274 585427 email: sales@britishrubberco.uk

www.britishrubberco.co.uk



Lexis trailed sprayer is biggest from Khun

Khun has launched its latest trailed sprayer; the new high-capacity 3800 has a 3,800 litre nominal capacity making it the largest in the range, complementing the existing 2,400 and 3,000 litre capacity models.

Despite its ability to carry 4,000 litres, the Lexis is compact and lightweight. It has a maximum length of 6.90 metres and an overall width of 2.55 metres. Featuring aluminium booms which extend up to 28 metres, it manages to keep its unladen weight just over three tonnes. The new model also features new 1.85m diameter tyres with a very high flexion (VF) option from 320 to 520mm which will help reduce compaction and protect soil health.

The Lexis can be specified with Khun's

Manuset manual rinse operation which only requires two main valves that are controlled from the operator's control station. Multifunction handwheels reduce handling operations by up to 50 percent and the ergonomic design means valves are easily operated for a simple, trouble-free set-up.

During rinsing, a complete turn with the delivery circuit handwheel ensures that the water drawn in by the pump is conveyed into all sprayer circuits. The rinsing tank level gauge, visible from the workstation, also enables easy sequencing of the rinsing operations.

The new Lexis is also available with Diluset+ which offers operators assisted management of filling and dilution of residual volumes.



The Lexis 3800 high-capacity trailed sprayer.

Spraying with the Lexis can be operated using Kuhn's CANBUS control box, a CCI 800 or 1200, or any other ISOBUS terminal.

Another interesting aspect of the Lexis is the improved stability and manoeuvrability, because the shape of its tank lowers the centre of gravity. This improves

stability, even with a reduced track width of 1.50m or when spraying on gradients. The short tow eye-axle distance of 4.30m coupled with the Track Assist gyroscopic steering drawbar system, also improves tracking in the tractor wheels.

The LEXIS can be fitted with CCE individual nozzle

control, Autospray PWM technology or the Boom Assist Extreme contour control system. Kuhn's CCI Connect solutions and MyKUHN portal also provide remote access to the machine and feedback on the tasks performed to harness valuable operational and application data.

LATEST USED STOCK www.chandlers.co.uk

Chandlers

Farm Equipment



RG655B
2013, 6152 Hrs, 242 HP
24m Pommier Aluminium
Twin Fold Booms
£85,000.00



516
2021, 876 Hrs, 170 HP
Tyres: 540/65R28 (95%)
650/65R38 (95%)
£123,000.00



MF 55.135 ESD4
2021, 419 Hrs
Tyres: 14.9R28 (100%)
18.4R38 (100%)
£66,500.00



A115 MH4
2022, 285 Hrs, 115 HP
Tyres: 13.6R24 (100%)
420/85R34 (100%)
£65,750.00



MANITOU MLT840
2019, 1500 Hrs, 141 HP
8m, 4000kg Lift
Tyres: 460/70R24 (50%)
£69,750.00



MT765E
2015, 8352 Hrs, 380 HP
Speed: 40Km/h
Track: 25 Track %: 40
£58,000.00



724
2017, 8300 Hrs, 240 HP
Tyres: 600/65R28 (60%)
650/65R38 (60%)
£79,950.00



MF 85.265 EXDE
2021, 700 Hrs, 265 HP
Tyres: 600/65R38 (90%)
650/75R42 (90%)
£116,500.00



T235D
2022, 454 Hrs, 220 HP
Tyres: 600/65R28 (100%)
650/75R38 (100%)
£138,500.00



MERLO 42.7 CS
2017, 1900 Hrs
7m Reach, 4000kg lift
Tyres: 500/70R24
£59,950.00

Errors and omissions excepted. All prices +VAT

USED AG SALES: Graham Peall 07970 121109 | Andrew Elms 07860 464753

Intelligent front tank solution from Horsch

Horsch has introduced the new Leeb FT front tank, an intelligent spraying technology that mounts to a tractor's 3-point linkage and offers additional spraying capacity. Available in 1,200 litre and 1,800 litre capacities, the Leeb 1.2 FT and 1.8 FT provide an ideal complement to the brand's recently launched Leeb CS rear-mounted sprayer, but will work with other sprayers too.

Design of the Leeb FT has been carefully considered with compact dimensions and an optimised centre of gravity. When combined with the Leeb CS, it offers up to 4,000 litres of spraying capacity in a highly flexible and manoeuvrable format. The Leeb FT uses a standard coupling triangle to ensure short set-up times and easy handling without the need to manually couple hydraulic lines.

The Leeb FT Basic can be used as an additional water tank with a 2in suction line towards the rear, without agitator and cleaning. It can be combined with all trailed Leeb models. The higher specification Leeb FT Pro is completely integrated into the software and the water circuit of the Leeb CS and features its own agitator and cleaning.

Featuring ISOBUS control with an intuitive interface, the Leeb FT has lighting integrated in the front tank and an optional camera system for a better overview of the space in front of the machine.

For more, go to www.horsch.com



Horsch Leeb 2.2CS rear-mounted sprayer with additional front-mounted 1.8FT front tank.

Fendt Rogator updated



The Fendt Rogator spraying beans.

Fendt has updated its self-propelled Rogator sprayer for 2023 with improved boom stability, electro-pneumatic nozzle bodies and a new ContiRinse system to reduce cleaning times. The new features will be available on all Rogator models - 645, 655 and 665 - with boom widths from 24-39m.

A redesigned plumbing system features a separate clean water pump allowing a new ContiRinse system to cut overall tank cleaning times after spraying. The system works on two adjustable liquid volume thresholds, with the first initiating cleaning of plumbing lines that contain chemical residues while the operator continues spraying. The second threshold is close to the end of the tank load and activates the full cleaning process as the tank empties.

Fendt's Sales Engineer Sam Treadgold says that "ContiRinse is designed to reduce the downtime spent cleaning and rinsing the plumbing system after spraying, making it quicker to change between products and crops. The additional clean water pump allows the pre-rinse cycle to begin while spraying and there is now an auto pump shutoff, which switches off the main 785l/min pump after cleaning to prevent it running dry."

All Rogator models are now fitted with new Altek electro-pneumatic nozzle bodies as standard, which replace the fully electric Arag versions. These are compatible with Fendt's OptiNozzle automatic nozzle selection system but also a single line Hypro five-way rotary, an Altek twin-line, and an Altek quad-line setup. The valves on the Rogator are now supplied by Banjo.

Sam continues: "The changes to our spray systems will increase longevity and reliability of the machines. The new nozzle bodies don't have diaphragms and feature no dead volume areas, so liquid or chemical residues can't sit inside the bodies after use. The electro-pneumatic design also provides increased reliability compared with our old units."

Boom stability has been improved with six OptiSonic height sensors - previously four - to keep the booms automatically adjusted in uneven crops, increasing application accuracy. The central sensor has been repositioned away from the rear axle to keep it free from debris.

In the VisioCab, the Rogator now gets the option of a dedicated fridge, keeping contents chilled down to 0°C. There is an improved handsfree system with a centrally located gooseneck microphone, while stronger mirror mounts reduce vibrations on rough terrain. All improvements are available on machines ordered now.



OLD 20

Parts Company

Most Parts for Most Tractors
Vintage, Classic & Modern

T: 01332 792698 | www.old20.com

Quote WRIGHTS23 to get 5% off your next order!*

*Subject to availability. Terms & Conditions Apply. See website for details.

JOHN DEERE'S BIGGEST EVER

John Deere's R975i sprayer is the biggest trailed model the company has ever produced. This 7,500-litre machine joins the rest of the R900i Series line-up, with tank capacities of 4,400, 5,200 and 6,200 litres and spray boom widths from 24 to 40m.

As with other sprayers in the range, this model benefits from John Deere Precision Ag technologies, enabling customers to profit from additional smart solutions. The R975i is designed to meet customer requirements for larger tank volumes and wider booms, as well as higher accuracy, reduced chemical use, and more comfort when filling and operating the sprayer.

The machine's larger volume means farmers and contractors can spend more time in the field spraying, and so increase productivity by covering larger areas with one tank. The proven PowerSpray dual-circuit solution system also helps to speed up filling times, improves spray application and increases accuracy.

For the first time on John Deere sprayers, the M900(i) and R900i Series models offer 25cm nozzle spacing as an option. This is an 'On Centre' solution that means an additional nozzle is placed between each 50cm nozzle body on the spray boom. John



John Deere 975i trailed sprayer in action.

Deere has also added a nozzle body plus an additional nozzle at each end of the boom to offer full coverage and eliminate underdosing at the boom ends.

All trailed sprayer ranges also benefit from the options launched on the R700i Series. These include Individual Nozzle Control, which limits over- or under-dosing to help preserve yields while saving input

costs. Nozzle Control offers savings in crop protection products worth up to £5.25/ha on top of Section Control.

Another feature is the Closed Transfer System, which is an ISO approved coupling. This prevents contact with any spillages of crop protection products, to ensure filling the sprayer is safe for the environment as well as the operator.



AGRICULTURE AND COUNTRYSIDE CONTRACT SERVICES

- Fencing contractors
- Hedge and tree planting
- Potato box repairs
- Grain Store cleaning
- And more.....
- Fast, efficient service
- Excellent attention to detail

Lincs based - will travel

Call Adam: 07970 433 470
Email: adam@farmlinc.co.uk
www.farmlinc.co.uk

DISPERSAL SALE BY AUCTION

Near Boston, Lincolnshire

FARM & HORTICULTURAL MACHINERY
incl. 11 TRACTORS, COMBINE, CRAWLER, TRAILERS,
VEHICLES, FORKLIFTS, WORKSHOP SPARESetc



Saturday 17th June 2023, 10.00 a.m.

Robert Bell & Company
Horncastle, Lincs. 01507 522222

www.robert-bell.org



To reach over 33,000 potential readers every month, call
Fran on 07764 230515 / Natalie on 07921 088407 or
email sales@wrightsregister.com /
natalie@wrightsregister.com

Wrights
FARMING REGISTER

www.wrightsregister.com

Wrights
FARMING REGISTER

Andrew Guest Ltd

The Kuhn Power Harrow Specialist

OPENING TIMES:

Monday - Friday 8am - 5pm

Saturday - By appointment



Recon power harrows from £6,450



**Quick fit 2!
Blade Holder
Conversion Kit**
to suit most models of Kuhn
£150/rotor



**Maxi Packer
roller kits**



Vertical folding markers to suit Kuhn, Maschio etc £950
Pre emerge kits from £795
3m recon Kuhn Accord combis from £13,450
4m recon Kuhn Accord combis from £14,350

Refurbished Kuhn Power Harrow & Accord Seed Drill Specialists

62 tonnes of genuine Kuhn tines sold last year!

Genuine Kuhn tines

2 bolt fix.....£10.95
Q fit 2.....£10.95
Q fit 3.....£18.50
Non genuine tungsten quick fit times.....£37.50



Recon DA drill c/w Suffolks.
3m from £6,750
4m from £7,250



**Wheel track
eradicators to suit
Kuhn Maschio
KRM**



Tel: 01636 700608 • Mob: 07833 535891

Email: simon@andrewguest.co.uk • www.andrewguest.co.uk

RURAL BUSINESS FINANCE SPECIALISTS



**HAREWOOD
ASSET FINANCE**

01937 222 123



AGRICULTURAL



Equipment we can help finance:

- Tractors
- Harvest machinery
- Cultivation machinery
- Irrigation equipment
- All Terrain vehicles
- Planting machinery
- Drilling machinery
- Trailers

HAREWOOD

ASSET FINANCE

Auction Finance
Agricultural
Ground Care
Equestrian
Renewables
Livestock
Tax & VAT Liability
Industrial & Construction

FINANCE OPTIONS

- Hire purchase
- Refinance
- Variable rate hire purchase
- Finance lease



RENEWABLES



Renewable assets we finance:

- Solar & Wind energy
- Biomass projects
- LED lighting
- Ground & Air source energy
- Combined heat & power systems

sales@harewoodaf.co.uk

Harewood Asset Finance LLP is an Appointed Representative of AFS Compliance Ltd, which is authorised and regulated by the Financial Conduct Authority, firm number 625035. Harewood Asset Finance LLP is a franchisee of Asset Finance Solutions (UK) Ltd. Harewood Asset Finance is a broker not a lender.

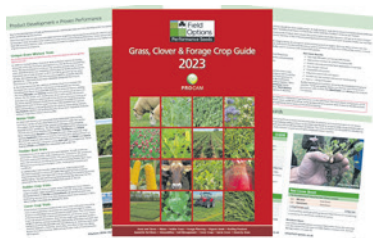
NEW GRASS GUIDE PUBLISHED

Field Options has published the 2023 edition of its grass, clover and forage crop guide which, in addition to providing full details of the company's cover crops, forage crops and specialist grass, clover and herbage seed mixtures, also contains useful agronomic and forage planning advice.

The new publication also contains details of the company's specialist fertilisers and silage inoculants along with guidance for how and when these products should be used.

"With farm margins continuing to be squeezed by high input costs, livestock farmers need to do all they can to maximise production from homegrown forage," explains Simon Montgomery, Technical Team Lead at Field Options. "One of the most effective ways of achieving this is to rejuvenate existing grassland leys and, where applicable, to introduce new crops to offset bought-in feed and fertiliser costs.

"The 2023 edition of our Grass, Clover and Forage Crop Guide therefore contains plenty of useful information to help dairy, beef and sheep farmers improve their production efficiencies by maximising the value of grazing and cutting leys and forage crops, especially in terms of cost per megajoule of energy. It also contains a lot of



useful forage planning information and crop establishment advice to ensure growers get the best results from reseeding."

The new guide also provides advice on pest control, weed control and soil health, as well as the latest results from Field Options' extensive grass and clover mixture trials. "It also contains findings from our independent programme of maize, fodder beet and cover crop trials, all of which are carried out so that we can recommend proven products to give greater assurance of performance to customers," Simon adds.

The 2023 Grass, Clover and Forage Crop Guide can be viewed and downloaded for free at www.field-options.co.uk More information and advice is also available by contacting Field Options on 01544 262500 or via email at info@field-options.co.uk

At the beginning of March, AS-Motor started series production of the new remote-controlled tracked flail mower AS 1000 Ovis RC. True to the motto 'Simply steep mowing', the mower convinces with its slope-compatibility, high mowing performance and easy handling and maintenance.

Riverbanks, railway embankments, rainwater retention basins, solar parks and wind power plants often pose great challenges for landscape managers and service providers. The AS 1000 Ovis RC is up to the task of regular maintenance of these often difficult-to-access, impassable and steep surfaces.

The power of the Vanguard Professional 2-cylinder engine with 23hp maximum output is transmitted directly and with low loss of efficiency to the blade shaft via a belt drive. The 4-stroke OHV engine with cyclone filter is equipped with a particularly strong crankshaft and has a displacement of 627cm³ at a speed of 3,600rpm. The AS 1000 Ovis RC enables a mowing speed of up to 5km/h and thus an area output of up to 5,000m²/h.

The 100cm wide flail mower, in combination with the somewhat narrower

WATERWELL CONSTRUCTION

- ALL ASPECTS OF WATERWELLS UNDERTAKEN
- SERVICE & REPAIR • WATER SYSTEMS INSTALLED

FREE QUOTATIONS & SURVEYS

No licence required up to 20m³ a day

If you are interested in saving money on your water bill then ring this number

07796 977917

E: tractor.clark@hotmail.co.uk

CCS, Westons Cottage, Skillington, Grantham, Lincs NG33 5HE



COUNTRY VEHICLES

WOODBOROUGH, NOTTS



Toyota Hilux Invincible 3 Ltr
Auto 07, leather seats, 191,000 miles.....£4995+VAT
Landrover Discovery TD5
2000w, 127,000 miles.....£1750
Landrover Discovery TD1300
97R, 123,000, leather seats, BFG tyres.....£1750

All serviced with full 12 month's MoT

DAVE SMITH MOBILE 07973 139483
HOME/FAX 0115 965 2204

KEVIN JOHNSON CONTRACTING

Established for over 34 years

Specialising in:

- GPS Satellite Guidance
- Fertiliser Spread from (12m-36m)
- Other Work Undertaken
- Lime Spreading • Drilling • Silage
- Latest GPS Technology
- Maize Drilling
- Mowing with Triple Mowers

VARIABLE RATE SPREADING OF FERTILISER & LIME

www.kevinjohnsoncontracting.co.uk



Call For Enquiries:

NAAC STAMFORD
(01780) 782924
MOBILE: 07860 608825
WE ARE HAPPY TO HELP!

TRACTORS UK

SOLE UK IMPORTER OF TAFE TRACTORS

BASIC, SIMPLE & RELIABLE

- 37hp, 47hp & 60hp
- 2WD or 4WD
- 2 year warranty
- Comprehensive parts backup



Call us on
01258 817 372
info@tractorsuk.co.uk

www.tractorsuk.co.uk

Wrights FARMING REGISTER

CLASSIC LAND ROVERS

BRITISH CLASSICS
HERITAGE MOTORS
PARTS 1948 to Date
RETAIL TRADE EXPORT
SPECIAL PROJECTS
RESTORATIONS
MANUFACTURING

Country Workshops, Risegate, Nr. Spalding, Lincs PE11 4EZ
Tel/Fax: 01775 750223
www.british4x4centre.co.uk

Wrights FARMING REGISTER

Remote control steep-mowing from AS-Motor

tracked undercarriage, makes it easy to mow close to the edge and comfortably to within a few centimetres of crash barriers and other obstacles.

Flexibility and suitability for slopes

The new flail mower with tracked undercarriage can be optimally adapted to all terrain conditions. Guided by a wide caster roller, the mower deck adapts perfectly to any contour. The adjustable sliding frame means that the specified minimum cutting height can be maintained throughout. Maximum traction on difficult terrain is ensured by the carried insert without ground contact. The mower's surfing suspension, with its large pendulum travel, also adapts well to uneven ground in difficult, hilly terrain.

The AS 1000 Ovis RC with its compact design (183cm long, 114cm wide and 69cm high) mows difficult terrain and hard-to-reach areas without any problems thanks to remote control from a safe distance. The automatic, mechanical parking brake provides additional safety when working on slopes. The large track units with steel

inserts ensure low ground pressure, ideal power transmission and best grip on steep slopes. The deep-seated, horizontally-mounted Vanguard Professional engine with optimised oil lubrication and the mower's low overall height give the AS 1000 Ovis RC a low centre of gravity and makes it extremely suitable for use on slopes, allowing for mowing under deep obstacles, for example in solar parks.

The AS 1000 Ovis RC's low weight of only 419kg not only protects the ground, but the balanced weight distribution and the robust crawler chassis also enable safe mowing of steep slopes up to 55 degrees.

Reliability

Once the first service has taken place, after 100 hours of operation, long maintenance intervals of 400 hours follow. For daily cleaning, the mower offers excellent accessibility. Air ducts, filters and oil control are accessible without tools and it can be easily placed in the service position to provide optimum access to the flail mower.

In the transport position, the new



Safe mowing is no problem, even on steep slopes above 50 degrees, with the AS 1000 Ovis RC flail mower. AS-Motor GmbH

flail mower with tracked undercarriage is even more compact (only 159cm long), so transport to the place of use is no problem.

● AS-Motor GmbH is a brand extension of AriensCo, headquartered in Brillion, Wisconsin, USA. Established in 1933, AriensCo is a privately-owned manufacturer of outdoor power equipment.

QUICKFENCER

Multi 2000

The new Multi 2000 can erect any height of wire up to 3 meters, down to a single strand. It comes with the tilt mechanism and a top link as standard. This machine is the flagship of the range.



Please contact: John Mob: 07966 285240 or Steve Mob: 07931 511090
www.quickfencer.com • Email johnquickfencer@yahoo.co.uk

HANKINS ENGINEERING LTD

Over 30 years manufacturing experience

Specialists in Contract
Moling, Manufacture
and Hire of the...

MAIDWELL MOLER

- Single, twin and 3 leg versions available.
- Well proven design beam moler incorporating shear bolt.
- Built to withstand crawlers and large tractors.
- Spares for most molers, including ceramics at competitive prices.



TELEPHONE: 01604 686216 MOBILE: 07973 265378
www.maidwellmoler.co.uk

BULK BINS

Available from
6 to 28 tons

Wanted and For Sale

Tel: 07774 737966

TO ADVERTISE IN

Wrights
FARMING REGISTER

CALL FRAN ON
07764 230515

FENCING CONTRACTOR

• POST & RAIL • STOCK, NET AND
BARBED WIRE • RABBIT FENCING

Stewardship Scheme work undertaken

Tel. Julian Nugus 01469 - 531137 Mobile: 07850 - 857988

Higher milk profit from multi-cut grass

Cutting grass in a multi-cut silage system has the potential to be over £700/ha more profitable than a traditional three-cut approach, even if milk price is dropping towards 40 pence/litre (p/l).

Moreover, despite increased silage production costs, the financial benefit of multi-cut grass over three cuts has more than doubled in the last few years.

Those are the findings from a new analysis conducted by Volac – using previous on-farm trial results which found that fresh-cut grass from a five-cut system had the capacity to support an additional 3,506 litres/ha of milk from forage.

This was after five cuts were found to deliver 18,582 MJ/ha more metabolisable energy (ME) than three cuts, says Volac silage scientist Dr Mark Leggett, due to five cuts yielding more total dry matter (DM) over the season and having a higher average ME.

“Applying a milk price of 25 p/l at the time of the trial (2019) to these extra 3,506

litres/ha of milk showed multi-cut was £333/ha more profitable,” says Dr Leggett. “This was after deducting £544/ha of extra costs for application of fertiliser and slurry, as well as contractor charges for cutting, raking, harvesting, carting and clamping the two additional cuts.

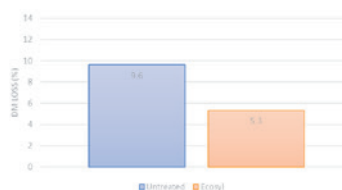
“Now, bringing this up to date by applying a higher, but still modest, milk price of 40 p/l has revealed the financial advantage of multi-cut over three-cuts to have more than doubled – to £752/ha. Again, this was after deducting the additional outlay for the two extra cuts, this time of £650/ha to reflect cost increases.”

The significance of this latest analysis, says Dr Leggett, is that with fertiliser and contracting costs having increased over recent years, and milk prices dropping back from the highs of 2022, farmers may be questioning the value of making multi-cut. “Clearly, it’s not a system that suits all farms,” he says, “but for this particular analysis, its extra benefit was clear.

“The other important finding from the original trial was the multi-cut grass was also 2.8% higher in crude protein. Producing higher quality grass by cutting younger and more often with multi-cut may not allow producers to reduce the tonnage of concentrate purchased. However, it might mean a lower-cost concentrate, with lower ME and lower protein, can be fed. It might also mean less imported protein is used. Alternatively, higher quality grass may be used to help improve milk yield.”

Dr Leggett notes the DM yield and quality results from the original trial were from fresh grass samples. He says the benefits of improved grass quality will not be seen

Reduced dry matter loss in multi-cut silage conserved with Ecosyl



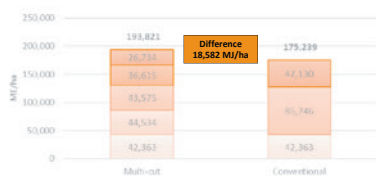
Source: Volac trial, average of four cuts

unless the crop is preserved correctly. So further Volac research looked at multi-cut conservation – this time across four cuts.

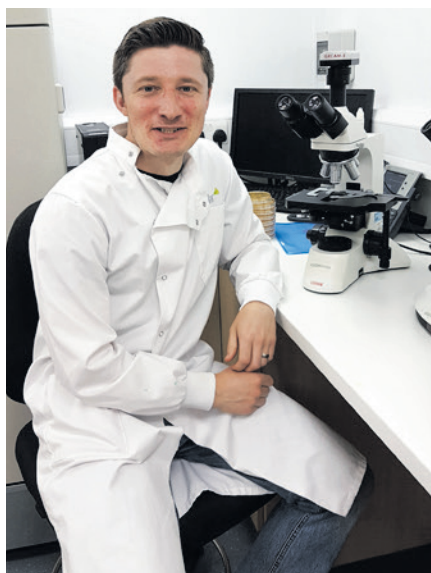
Dr Leggett says: “Compared with leaving grass untreated, the work found that treating with the additive Ecosyl – which applies a million *Lactobacillus plantarum* MTD/1 bacteria per gram of forage – reduced DM losses on all four cuts, and on two of the cuts by more than half. The results also pointed to better protein preservation by using the additive, and the number of enterobacteria – the undesirable bacteria associated with slurry – in the treated silage was up to 100,000 times lower.

“Using a proven additive to improve conservation of a multi-cut crop is an important consideration, since shorter intervals between cuts allows less time for slurry bacteria to decline. Also, the higher protein content of younger grass can contribute to buffering of the fermentation. The combination of high buffering and the action of slurry bacteria can lead to DM and nutrient losses. With farmers looking to improve milk from forage, it makes little sense to produce multi-cut as a way of improving forage quality if that quality is then lost during ensiling.”

Higher metabolisable energy (ME) yield per hectare from multi-cut grass (five cuts) versus conventionally-cut grass (three cuts)



Source: Volac on-farm trial, 2019



Compared with leaving silage untreated, the research found that treating multi-cut grass with Ecosyl reduced DM losses on all cuts, and on some cuts by more than half, says Dr Mark Leggett.

Potential extra profit from multi-cut grass versus conventional at different milk prices and different silage-making costs based on trial findings

Potential extra milk income	Latest costings	Previous costings
Extra ME from multi-cut from trial (MJ/ha)	18,582	18,582
ME required to produce 1 litre of milk	5.3	5.3
Potential extra milk from 5 cuts vs 3 cuts (litres/ha)	3,506	3,506
Milk price (£/litre)	£0.40	£0.25
Value of extra milk from multi-cut per ha	£1,402	£877
Deduction of extra silage-making costs (5 cuts vs 3 cuts)	£/ha*	£/ha**
Costs for extra fertiliser and slurry applications, and extra contractor charges (cutting, raking, harvesting, carting and clamping).		
Per cut	£325*	£272**
For two extra cuts	£650*	£544**
Potential extra profit	£752/ha	£333/ha

* based on 2022 costs/estimates as the latest available

** based on 2018 costs/estimates as the latest available at the time

Source: Volac calculation

www.afmachinery.co.uk

hwhite@afmachinery.co.uk

01327 261023 - Option 2

Attlefield Farm Machinery

Products you rely on

Prices you trust.



SPEARHEAD SNIPER
offset 225 Flail Mower LH/RH
available £7,250.00



MCCONNEL SR 460 Batwing
Topper £14,750 ex VAT



SPEARHEAD Multi Cut 650 Pro line
Batwing Topper



USED SPEAR-HEAD BATWING
toppers in stock.
Workshop prepared



SPEAR-HEAD SNIPER 250-SHD
Flail £7,750.00



SPEARHEAD
Multi Cut 480 Pro line
£23,500.00



SPEARHEAD SNIPER 280
HD LH flail mower
£6,750.00



SPEAR-HEAD MULTICUT 200
£5,950.00



2010 SPEAR-HEAD
Multicut 620
Batwing Topper (86)

ATTLEFIELD FARM, HELLIDON • DAVENTRY, UK, NN11 6GG



JETHRO 2 WITH RTK PACKAGE PRECISION PATH GUIDANCE AND RECORDING SYSTEM

With an updated operating system and a wide choice of touch screen displays the amazing, simple and logical to use Jethro 2 system is now paired with our precision DGPS RTK-Smart Antenna! Available in Base and Rover versions the new antenna is an advanced multi-GNSS compatible system using GPS, GLONASS, BeiDou, Galileo, for simultaneous satellite tracking to offer RTK positioning.



DGPS4U TRACKER 2 REAL-TIME GPS VEHICLE TRACKER WITH AGPS

This small real-time feature packed GPS tracker can be fitted in minutes by just 4 wires - giving you peace of mind and keeping your machinery safe! Easily integrated into new or existing TRAC>DOWN accounts.

trac>down
MOBILE GPS TRACKING SYSTEM



DGPS4U AUTOSTEER BV EASY TO FIT ENTRY LEVEL AUTOSTEER SYSTEM

Yes... in just 60 minutes you could have this great autosteer kit installed on your current machinery... and for much less money than other "premium" systems!

- Features include:
- ▶ Superb +/- 2.5cm accuracy
 - ▶ Single GNSS Antenna module
 - ▶ Terrain compensation features
 - ▶ GNSS RTK / EGNOS technology
 - ▶ Fitment for over 90% vehicles... straight out of the box
 - ▶ IP66 / IP65 rated
 - ▶ Amazing Return on Investment.



MVC SWITCHBOX MULTI-CAMERA CONTROLLER - WITH CAMERA, MONITOR AND CONNECTION PACK OPTIONS

The DGPS4U switchbox allows the driver to choose which external camera to view on the In-Cab monitor - Massey Ferguson, New Holland, John Deere etc*. Maximum of 4 individual camera inputs per unit.



*Additional cable may be required for some brands.



WHERE THE BEST IN FARMING AND TECHNOLOGY MEET!

STAND 211

www.dgps4u.com

info@dgps4u.com 01339 883361 - 07770 765411

ROBOTICS AND BIO-FUEL TRACTORS – See the future at Cereals 2023

More than 400 exhibitors, sponsors and demonstrations will be laid on over two days – Tuesday and Wednesday, 13th & 14th June – at Thoresby Estate, Nottinghamshire, a new venue for Cereals which staged its first event back in 1979.

Hosted on a working farm, Cereals offers live demonstrations across a wide range of manufacturers and machinery types. The show is the UK's largest arable farming event and attracts in excess of 20,000 visitors each year.

Technology brings innovation and the farming industry never stands still. Arable farmers will be able to see the latest industry solutions, including improvements in drilling and spraying accuracy and therefore efficiency and yields.

Visitors will be able to speak to manufacturers, witness new equipment demonstrations and listen to keynote speakers.

Sprayers & Cultivators

In the Syngenta Sprays & Sprayers Arena will be a full schedule of demonstrations where the latest sprayers will be put through their paces, including air-assisted, skid unit, self-propelled, trailed and mounted sprayers. Market-leading companies will present the latest innovation and application technology on offer.

Farm Sprayer Operator of the Year (FSOOTY) award nominees and winners will be announced at mid-day on the first day at the Stories Stage, when visitors can also learn about Syngenta's 3D Ninety nozzle, and the Easyconnect closed transfer system.

Celebrating its 40th anniversary, Amazone is exhibiting its machinery development over the past 40 years, along with an open-house seminar programme starting each day at 11.00am. Speakers will cover the latest thinking behind crop establishment and crop care demands.

The company is demonstrating its new UX7601 long-bodied trailed sprayer with 8,000-litre capacity and the latest 36m boom in the Sprays & Sprayers Arena, along with the Pantera self-propelled sprayer and UF02 mounted with a front tank.

"We are hoping for a good event. It's on our doorstep – only about ten miles from our Doncaster base," says Amazone Managing Director, Simon Brown.

The company is also active in the Drill Demo Arena, showing its Primera 3000 C direct tine drill. "Each chisel opener can follow contours over a huge variation in topography, with the impact angle of the chisel point pulling the coulter down to the set placement depth," says Simon.

Kuhn Farm Machinery is exhibiting two Aero machines, the 32.1 and GT 60.1, alongside the 12m Optimiser L12000 disc cultivator and Multi-Leader XT plough. The Lexis 3000 trailed sprayer will also be on show in the Sprays & Sprayers Arena, says Kuhn's product marketing specialist, Edd Fanshawe. "This year we are hoping to show Cereals visitors the strength and depth Kuhn has in the arable sector. In addition to the cultivation machinery, we will also have a range of drills, a Striger 600R strip till machine, and a selection of balers."

European market leader in direct strip seeding technology with its Opti-Till system, Claydon will demonstrate the latest Evolution mounted drill and straw harrow at Cereals. It will also exhibit a 4.8m Evolution drill, 4.8m TerraBlade inter-row hoe and 6m TerraStar light rotary cultivator.

The Evolution line-up, which includes a 5m unit and 4m rigid grain/fertiliser model, incorporates new features to improve operational functionality. Seeding depth adjustment is now controlled hydraulically. Improved access to the metering unit



Local sprayer manufacturer Amazone is celebrating its 40th anniversary at Cereals 2023.

allows easier calibration, while front-mounted discs, operated hydraulically from the tractor seat, can be specified for seeding into high residue situations.

Meanwhile Opico is launching a new version of its HE-VA Combi-Disc. The 'Stealth' variant of the ever-popular combination cultivator gains ultra-low disturbance legs and a choice of different points, depending on how much sub-surface action is needed.

Now available in working widths from 2.45m to 5.25m in both mounted and trailed formats, the Combi-Disc employs two leading rows of soil-loosening legs, followed by two rows of serrated Sabre discs, to provide a surface chopping and mixing effect. This is all followed up with a V-profile roller to produce a corrugated, weather-proof finish.

"With the increased focus on regenerative practices, we're seeing a need for cultivation kit that can reduce soil disturbance but still deal with compacted layers in the soil profile. This ensures decent drainage and rooting to maximise crop potential," explains Opico's HE-VA product manager, Glenn Bootman. "With this new leg option for the Combi-Disc we are answering that requirement."

Robotics

Autonomous Agri Solutions is demonstrating its Robotti machine, manufactured by Agrobot, says Managing Director, Thomas Beach; "Visitors will be able to see it working with no driver. Exhibiting at Cereals gives us the opportunity to understand farmers' challenges and requirements, which is helping us to build up our services."

Agxeed AgBots will be demonstrating throughout both days of the event so visitors can see what the latest technology looks like in action. The AgBot 5.115T2 is ready for hours of high-capacity work on broadacre arable land. It has soil-preserving crawler tracks and adjustable track width from 1.9m to 3.2m.

As well as in-row and inter-row weeding demos throughout both days, Garford, which manufactures a range of robotic mechanical weed control products, will be displaying: a 6m tine raiser inter-row hoe, a Side shift unit, an in-row demonstration machine, wheel units showing different shares offered and hooded sprayer hoods and nozzles, plus new options on Dual Wheel, Precision Side Disc (200mm), Rotary Tine Weeder, Crumble Roller, plus Dual eRotor for Robocrop InRow.



The future? Agrobot's Robotti will be demonstrated at Cereals.

Tractors

Always of interest to visitors, this year's Cereals will showcase a number of new machines, including intelligent and bio-fuelled equipment.

The new T7.300 long-wheelbase with PLM Intelligence will be part of New Holland's line-up at the show. It delivers more power and best-in-class power-to-weight ratio while maintaining the dimensions and manoeuvrability of other T7 models.

With the drive to a more sustainable and environmentally-friendly future, New Holland is exhibiting the UK-built and first of its kind T6.180 Methane tractor, winner of the 2022 Sustainable Tractor of the Year Award. The tractor is powered by compressed natural gas (CNG) which allows users to make use of biomethane stations. Alternatively, refilling can be performed directly from the gas grid network with an installed compressor.



New Holland's T7.300 with PLM Intelligence.

CNH Industrial strategic partner Bennamann will also be joining the New Holland team at Cereals. Bennamann has expertise in solutions to capture, repurpose and store fugitive methane emissions from slurry lagoons for energy use. New Holland and Bennamann's Energy Independent Net Zero Farming Circular Solution recently won at the 2023 AD and Biogas Industry Awards at the World Biogas Expo in Birmingham.

Fendt is showcasing its new 700 Vario Gen 7 tractor, which was launched earlier this year. The 700 series Vario will be accompanied by models either side of the horsepower range, with the latest Gen 3 500 series and Gen 7 900 series also featuring on the stand, says Richard Miller, product manager at Fendt; "This will be an excellent opportunity for customers old and new to see the latest tractors. The Fendt stand will also include the latest Rogator 600 MY23 self-propelled sprayer, the IDEAL combine, and the innovative Cargo T740 with its elevating cab."

Off-road

The Isuzu Offroad Driving Experience offers visitors the chance to get behind the wheel of a new machine on an offroad course. With a qualified instructor in the passenger seat, drivers will get to experience the vehicle at different speeds and in a variety of conditions, as well as testing various features including the hill descent control. There will also be a towing area, so visitors can put the Isuzu D-Max to the test.

To take part in the Isuzu Driving Course, visitors simply need to present a valid driving licence on the day.

This year's Cereals offers an unrivalled opportunity for visitors to see all the latest machinery and vehicles in action, says event organiser Alli McEntyre; "Don't miss this chance to see how machinery performs in the field, get close to it and assess how it might fit into your business."

To pre-register, go to www.cerealsevent.co.uk

John Deere innovations to be showcased

Visitors to the John Deere stand at Cereals 2023 can look forward to surveying all the company's recent breakthrough technological innovations in arable machinery first-hand.

Centre stage will be its most recent major developments, including Deere's HarvestLab 3000, which is now available on S-Series and T-Series combines.

It has expanded the use of near-infrared sensor to allow combinable crop farmers to measure important quality parameters in wheat, barley and oilseed rape continuously, and in real time.

The technology also gives farmers a granular view of field performance, laying the foundations for decisions on inputs for the following season.

"This up-to-the-second analysis delivers numerous benefits, including being able to know for certain whether wheat has met milling quality specifications, the grain quality at an individual point of a field, and gaining an overall picture of which soils have converted nutrients into yield and protein," says Chris Wiltshire, John Deere's Tactical Marketing Manager.

"This greater level of detail and analysis is all part of the progression to site-specific farming; targeting inputs where they are needed, reducing unnecessary expenditure and paving the way for a more productive and profitable future."

Visitors to Cereals will also be able to see the 8R 410 tractor with stepless eAutoPowr transmission – the first 400hp machine to gain the revolutionary gearbox – and the ability to offboard power to trailed implements.

Chris said: "eAutoPowr is the world's first electric infinitely variable transmission with electro-mechanical power split."

"We've completely replaced the hydraulic components with an electric power path. Two brushless electric motors are virtually wear-free and powertrain durability exceeds any other concepts previously offered in the industry. Moreover, this simplifies the design of the transmission and allows real time remote technical diagnosis."

Over the two days, John Deere will also be taking part in the Sprays and Sprayers Arena demonstrating the R975i, the biggest trailed model the company has ever produced.

"With boom widths of 24-40m and a 7,500-litre capacity, we'll be on hand to share how our newest sprayer brings higher accuracy, reduced chemical use and more comfort when filling and operating," Chris added (see pages 20-22).

Over the past 12 months, John Deere's new 6R Series tractors have been arriving on farms in the UK and Ireland, and visitors will be able to see first-hand how one of the most popular models have evolved.

The four most recent additions to the range include the four-cylinder 6R 150 – aimed particularly at mixed farms – and the six-cylinder 6R 185, a specialist transport tractor for farmers and contractors who spend more time on the road.

"We will also bring our flagship X9 combine, for those farmers looking to achieve the next level in harvesting performance," Chris said.

"These machines help large-scale farmers harvest more tonnes per hour and cover more hectares per day, even in tough conditions."

John Deere's 750A All-Till drill will be demonstrated in the Drilling Arena.

Available in 3, 4 and 6m widths, the 750A is a versatile tool designed with large clearances for no-till drilling into stubble, working after minimum or



John Deere S-Series Combine with HarvestLab 3000.

conventional cultivation, and single pass operation for grassland and rough pasture renovation.

Fitted with the Accord air seeding system, operators will need a minimum of 80 to 140hp and can expect to cover 6ha/hr, depending on conditions, at seeding depths from 13 to 90mm.

Land-Leveller in action at Cereals

Visitors to this year's Cereals will be able to see an agricultural land forming and land levelling machine.

Mastenbroek, which has been manufacturing drainage trenchers since 1977, has invited agricultural drainage contractors, AMS Contracting, to join it on stand 518 at the Thoresby Estate event.

AMS Contracting is one of the first UK drainage contractors to have fitted the Trimble® FieldLevel II system and a TMX-2050TM Display System to its tractor and scraper. The software, sold by Mastenbroek, generates cut-and-fill maps allowing farmland to be formed or levelled, which improves drainage and yields.

Land forming, which is commonplace in the United States and Europe, uses a GPS survey to identify uneven areas of a field. The survey data is used to scrape the soil from higher areas of the field into lower areas to produce an optimum surface. When

combined with a drainage scheme, the land becomes more productive, generating better yields for farmers.

"AMS Contracting are one of a handful of businesses in the UK using our machinery and Trimble's technology to undertake land forming and land levelling," says Christopher Pett, Commercial Director at Mastenbroek. "Ashley and Myles, who run AMS, are carving out a real niche and have helped several farmers improve the quality of their agricultural land and yields. We are delighted they have agreed to join us in the National Association of Agricultural Contractors' drainage hub at Cereals. We think their scraper will attract a lot of interest from farmers and other contractors keen to see how they add a new service to their business."

Established by Ashley and Myles Strange in 2011, AMS Contracting began life as a specialist big bale contractor but

moved into agricultural drainage and land forming in 2017. Based in Chichester, AMS predominately works in the south-east of England.

"We've been very lucky so far, and lots of farmers have put their trust in us, and word of mouth from delighted clients has undoubtedly helped," explains Myles, "I don't think people are aware of the benefits of land forming. We've seen land forming grow to be a third of our business, and turnover has risen by 30% as a result."

"As well as arable farmers, we've also helped fresh fruit growers, creating fields that look like billiard tables! Land levelling can turn some of the least productive areas of land into the most productive."

For more information about the Trimble® FieldLevel II system and Mastenbroek, visit the team at Cereals.

● See front cover image.

'CONNECTED' FENDT FLEET

Fendt will focus on new technology and new models at Cereals on June 13th and 14th to demonstrate how its machines provide operators with a data driven advantage. It will also be the first time for an arable audience to see the new 700 Vario Gen 7 tractor which was launched earlier this year.

Connecting all the latest Fendt machinery is the FendtONE onboard/offboard operating concept. The, now familiar, Fendt cab uses the operating system to make data collected by machines easier to share, both between Fendt machines and with farm management systems.

"FendtONE facilitates data driven farming to offer operators and farm managers the ability to optimise machinery and operator



CEREALS 2023 – Tuesday/Wednesday 13th/14th June

Location:	Thoresby Estate, Perlethorpe, Newark, Nottinghamshire NG22 9EQ
Travel: Car	Use NG22 9EQ in SatNav, but once close to event, switch off and follow Cereals Visitor Parking signs
Travel: Train	Nearest rail stations at Worksop and Retford (both approx. 9 miles)
Travel: Air	Nearest airport is Doncaster Sheffield Airport (approx. 19 miles), East Midlands Airport (39 miles) and Manchester Airport (70 miles)
Opening Times:	Parking 6.00am, Gates 7.30am, Stands 8.00am
Registration:	Pre-booked £15.00+VAT (two day admission) On the Day £20.00+VAT (two day admission)

Full details and to register: www.cerealsevent.co.uk

hours, by programming tractors, sprayers and combines to share data," says Fendt's Richard Miller.

In the cab, FendtONE sees three terminals available in every Fendt tractor while software on a desktop or mobile device interprets data from tractors in the fleet in real time. This can help to reduce fuel usage and downtime while improving the productivity of the tractors and other machinery.

"Data is driving arable farming to be more automated, efficient and productive. Fendt has met the challenges of arable farming head on by providing the most efficient machines with technology that can harness and take advantage of data," concludes Richard.

ANYTHING AGRICULTURAL



AS Marston FF10 trailer,
silage sides, grain chute
SPECIAL DEAL
£3500 +VAT



AS Marston ACE 14 trailers,
choice of 2,
sprung drawbars
SPECIAL DEAL £7000 +VAT



Jones Heavy Duty trailer,
355/60x18 wheels,
grain chute
SPECIAL DEAL £3500 +VAT



Foster 8 ton
Load Master
drop sided trailer,
12.5/80x15.3 wheels



CONTACT:
Dean Sempers
07836 680004

Email: dasservices@btconnect.com
Web: dasanythingagricultural.co.uk

UK SERVICE



Suitable for
Warehouses, Barns,
Silos, Containers,
Potato Stores,
Grain Stores,
Workshops, Garages
and much more...

SEALS UP LEAKS
(WEATHERPROOFING)

CLASS 1 FIRE RATED
STRUCTURAL STABILISATION

HELPS CONTROL
CONDENSATION

ENCAPSULATE ASBESTOS

WARMER IN WINTER
COOLER IN SUMMER

CONTROLS DUST AND DAMP
WITHIN PROPERTIES

25 YEAR MANUFACTURER'S
WARRANTY

TAG

INSULATION

T: 0800 448 0457

M: 07722 075078

E: info@taginsulation.co.uk

www.taginsulation.co.uk



As seen
on
Facebook

SPECIALISTS IN CLOSED CELL SPRAY FOAM INSULATION
CALL NOW TO ARRANGE A FREE SURVEY

ET Agricultural Trailers & Spares

COTTAM GRANGE, COTTAM, DRIFFIELD, EAST, YORKSHIRE, YO25 3BY

Tel: 01377 267415 • email info@et-agri.co.uk

MONO | ROOT | BALE | DUMPS

Trailers made to your needs



FOR MORE INFORMATION VISIT - www.et-agri.co.uk

CONTACT PETER EASTERBY OR A MEMBER OF OUR TEAM



Bobcat first time showing at Plantworx

Plantworx 2023 will see the unveiling of a range of new Bobcat plant in both the Demonstration and Static areas, when the show at the East of England Arena, Peterborough, gets underway on 13th June.

This will include the first appearance at a UK construction show of both the new TL25.60 telehandler and the T86 R-Series Compact Track Loader as part of the Static display. Other firsts for Bobcat at Plantworx include the new Ground Maintenance Equipment range and an array of products from the company's Light Compaction line. These continue with the new E19e electric-powered model and the top-of-the-range E88 8 tonne mini-excavator.

The three-day event (13th-15th June) will also see Bobcat presenting for the first time its new MaxControl Remote Control system on a T66 compact track loader, which will be in the Demonstration zone.

New TL25.60 Super Compact Telehandler

As the smallest machine in the Bobcat telehandler range, the new TL25.60 brings the number of rigid frame telehandlers from Bobcat for construction, rental and general handling to eleven models. The TL25.60 has been designed for simplicity of use, excellent stability, optimum comfort and safe operation in any type of application.

It is powered by a 75hp Bobcat Stage V engine. The machine has a rated operating capacity of 2,500 kg, offers a maximum lift height of 5.9m and a maximum reach of 3.3m. The Bob-Tach carriage (manual or hydraulic) increases versatility by allowing the TL25.60 to utilise attachments designed for the Bobcat loader range.

The T86 - Bobcat's most powerful compact track loader ever

Delivering a higher engine and hydraulic output, the 5,087kg T86 is the most powerful compact track loader Bobcat has ever built, offering a rated operating capacity of 1,780kg and a tipping load of 3,175kg. Utilising a well-proven Stage V compliant 3.4 l Bobcat engine, producing 78kW (105hp) at 2,600 RPM, the T86 can be configured for the first time with three different auxiliary functions.

The T86 is part of what is now the largest loader portfolio of any manufacturer in the world. This will be ably demonstrated by Bobcat at Plantworx by the presence of both the L85 compact wheel loader in the Static area and the company's L28 small articulated loader in the Demo area.

High performance is assured by the combination of the powerful Bobcat engine and the hydraulics in the L85. This is complemented by the high stability, breakout, push and pull forces and a comprehensive selection of Bobcat attachments. The L28 is ideal for a multitude of tasks in a very wide range of industries, offering high lift capacities in confined spaces, ease-of-use with simple intuitive controls and low ground disturbance for working on any terrain.

Ground Maintenance Equipment

Bobcat's new line-up of innovative Ground Maintenance Equipment (GME) will be on display for the first time at Plantworx. The GME range comprises compact tractors, zero-turn mowers and turf equipment, supplemented by the company's existing

mini track and small articulated loaders. Bobcat is offering three Compact Tractor platforms – the 1000, 2000 and 4000 series – which feature nine new models from 25-58hp designed to meet the varying needs of customers in Europe.

Electric power - clean and quiet

The E19e being shown by Bobcat at Plantworx is a new 2-tonne mini-excavator to supplement its ever-expanding range of electrically powered machines. The E19e – an electric version of Bobcat's popular E19 internal-combustion (IC) model – offers zero emissions, low-noise operation and comparable levels of performance to its diesel-powered counterpart. With a width of just 98cm, the new electric model is easy to operate in even the most confined workspaces, making it ideal for tasks such as demolition as well as outside applications that require quiet, zero-emission operations.

E88 Mini-Excavator

The E88 8 tonne Stage V compliant mini-excavator delivers outstanding performance from a compact dimension machine, superb operator comfort and excellent stability with high digging output. The proven Bobcat D24 Stage V 4-cylinder engine offers a maximum power output of 48.5kW (65hp) and ensures the highest performance and maximum reliability. To meet Stage V emission levels, the engine uses diesel oxidation catalyst (DOC) and a diesel particulate filter (DPF), replacing selective catalytic reduction, to achieve maximum reliability, efficiency and environmental protection.

Remote operation at your fingertips

Installed on a T66 compact track loader, the MaxControl Remote Control system from Bobcat will be demonstrated for the first time at Plantworx. MaxControl provides a vision of machine control of the future, by enabling operators to control Bobcat compact loaders remotely via an app, using an iPhone or iPad.

With MaxControl, owners of Bobcat loaders do not need the latest machines or costly hardware updates to enjoy remote control. The system is compatible with all Bobcat loaders with Selectable Joystick Controls (SJC) dating as far back as 2004.



The T86, Bobcat's most powerful yet.

Visit Stands B-DB15 and B-DB5
Plantworx, East of England Arena,
Peterborough
13th-15th June 2023

SUPPLY YOUR CUSTOMERS WITH

Wrights

FARMING REGISTER

ABSOLUTELY

FREE!



THERE'S NEVER BEEN A BETTER TIME TO STOCK WRIGHTS FARMING REGISTER

Farming has seen many changes over the past decade during which time Wrights Farming Register has stood firm and continued to offer a valuable service to the industry when many other publications have fallen by the wayside.

SIGN UP TO BECOME A STOCKIST TODAY!

Whatever the type or size of your business - Wrights Farming Register is a great tool to increase regular footfall in to your premises, and to provide your customers with added value every month.

POINT OF SALE PACKS AVAILABLE

We're also offering new and current stockists the opportunity to take a Wrights Farming Register point of sale promotional box to display your papers in effectively. To become a stockist contact us via any of the methods below and tell us the name and address of your business, the main point of contact and how many copies you'd like to take (a minimum of 20 copies per month).

Wrights Farming Register, a bi-monthly mart for the farmer, agricultural dealer, plant machinery dealer and contractor, has been described as 'the Bible' when it comes to products and services related to the farming industry.

Wrights
FARMING REGISTER

CONTACT: Sue Fixter

CALL: 01507 524496

EMAIL: subs@wrightsregister.com

Wrights
FARMING REGISTER

SUBSCRIBE

FOR FREE*

6 issues delivered to your door for only £15



- All the latest farming news
- Show previews and reviews
- Brokers' machinery for sale

HOW TO SUBSCRIBE*

Call: 01507 524496 to pay by credit or debit card

Email: Send name, address and phone number to subs@wrightsregister.com and we will invoice you. Your subscription will begin with the next available issue once paid

Post: Send name, address, phone number and a cheque payable to Wrights Farming Register Ltd to: Customer Services Dept, Wrights Farming Register, Suite 3/4, Stanhope Hall, Boston Road, Horncastle LN9 6NF

* ALTERNATIVELY, GET A FREE DIGITAL SUBSCRIPTION @ WRIGHTSREGISTER.COM/SUBSCRIBE

Wrights

FARMING REGISTER

Classifieds

To advertise call Fran on 07764 230515 / Natalie on 07921 088407

BUILDINGS

STEEL BUILDINGS



HEAVY DUTY STEEL BUILDINGS

- ◆ Extremely cost effective ◆ Workshops/Garaging/Storage
- ◆ Widths from 20ft to 70ft ◆ Unlimited Lengths
- ◆ Buildings to BS 5950 ◆ Finance available

BLUELINE BUILDINGS

Tel: 01709 578333

PORTAL POWER

NEW & PRE-USED BUILDINGS

Please quote WFR when calling for 5% Discount

01728 861444 www.portal-power.co.uk info@portal-power.co.uk

98'x58'x18'.....	£22,000
98'x41'x15'.....	£19,000
130'x57'x17'.....	£28,000
Complete New Galv grainstore	
138'x78'x23', 42x24x7m.....	POA
30mx24mx7m grainstore.....	£38,000
84x25.5x8.5m all new purlins.....	£115,000

INDUSTRIAL, AGRICULTURAL AND EQUESTRIAN

Wrights
FARMING REGISTER

To reach over 33,000 potential readers every month,
call Fran on 07764 230515 / Natalie on 07921 088407 or
email sales@wrightsregister.com / natalie@wrightsregister.com
www.wrightsregister.com

Wrights
FARMING REGISTER

UNBRAKO PRECAST CONCRETE



-50% HAULAGE ON FULL LOADS !

**LEADING MANUFACTURERS
OF HIGH QUALITY
CONCRETE PANELS**



HEIGHTS : 1M, 1.2M & 1.5M  THICKNESS : 100mm, 150mm & 180mm

FREE TECHNICAL ADVICE & MEASURING SERVICE

WWW.CONCRETEWALLING.CO.UK 01949 860985

BUILDINGS

Industrial Doors Ltd

multi**Tel: 01455 891929**

M I D Business Centre / Sapcote Rd, Burbage, Hinckley LE10 2AU

Nationwide Service

<http://www.multiindustrialdoors.co.uk>
sales@multidoors@hotmail.co.uk

- Galvanised Roller Shutters
- Plastisol Colour Coated Shutters
- Insulated Roller Shutters
- Sectional Overhead doors
- Steel 10 Point Locking/ Security Personnel Doors
- Steel Fire Exit Doors
- Fast Acting High Speed Doors
- Dock Leveler/ Loading Bay Installations
- PVC Strip Curtains
- and many more products

**MAX LAST CONTAINERS****CONTAINERS FOR SALE OR HIRE****new and secondhand****ALL SIZES OF SHIPPING STORAGE AND REFRIGERATED CONTAINERS****Tel: 01394 387728****Fax: 01394 388826****Mobile: 07860 413994**maxlastcontainers@gmail.com

Nationwide Service

ROOFING & CLADDING SHEETS

PLASTISOL - POLYESTER INSULATION - PURLINS
 METRE COVER
 'ONDULINE STOCKISTS'

DIRECT FROM THE MANUFACTURER**NATIONAL CLADDING**

Unit 6, Capelhendre Ind. Estate,
 Nr. Ammanford, Dyfed SA18 3SJ

Telephone: 01269 831869**Fax: 01269 831870**www.national-cladding.co.uk**M&B SACKS LIMITED**

Industrial / Agricultural Sacks
 Paper, Polythene, Woven
 Polypropylene & Hessian.
 IBC'S / Tonne Bags, Woven
 and Knitted Nets

AVAILABLE FROM STOCK OR BESPOKE

The Old Mill, Allington Lane,
 Foston, Grantham, Lincs. NG32 2JR
 Call us on 01400 281384
 Email: sales@mandbsacks.com
www.mandbsacks.co.uk

GENERATORS**ENROGEN Diesel Generators**

Enrogen Ltd
 Electricity Building
 Blenheim Road
 Pocklington Ind Est
 York, YO42 1NR

Sales ~ Service ~ Repair ~ Refurbishment ~ Spare Parts**Power Your Farm**

- Grain Drying
- Poultry Sheds
- Milking Parlours
- Potato Harvesting Equipment



Brand New
 150kVA Perkins
 Leroy Somer Alternator
 Acoustic Enclosure
£21,344.00+VAT

Now supplying PTO Generators**TEL: +44 (0) 1759 307070****FAX: +44 (0) 1759 305070****Email: mail@enrogen.com****Web: www.enrogen.com**

LIVESTOCK

VALE LIVESTOCK

MOORE'S YARD, HEMINGBY LANE, HORNCastle,
 LINCS LN9 5PN  .co.uk

- BULK FEED BINS •
- PIG & POULTRY FEED SYSTEMS •
- DRINKER SYSTEMS •

Contact:

R. Moore 07957 568 955
 TEL: 01507 522386 FAX: 01507 522061
www.valelivestock.co.uk

SERVICES

REPLACEMENT
POTATO WEB
INSERTS

For most types of
machines

SEED
SHEETS

Save Time, Save
Labour, Save
Money

Call or email for more
information:
Beltec (Market Rasen) Ltd
 01673 844181
enquiries@beltec.co.uk

WWW.ELECTRICCABLE.CO.UK

Tel: 01733 205123

Rubber H07 RN-F, SY & YY Cables, Plugs & Sockets
Large Stocks - Low Prices - Next Day Delivery
 All Major Cards and Paypal accepted
 Buy online at www.electriccable.co.uk
 or call 01733 205123 or
 email sales@electriccable.co.uk



HAREWOOD
ASSET FINANCE

01937 222 123

sales@harewoodaf.co.uk


**RURAL
 BUSINESS
 FINANCE
 SPECIALISTS**

MACHINERY FOR SALE



Agricultural and Construction
Machinery Sales and Service

IN STOCK NOW!

					
P120.10		4838hrs			
P32.6	2007	6600hrs	P40.7	2008	8456hrs
P40.7	2012	6640hrs	P27.6 PLUS	NEW	NEW
P40.7	2009	4460hrs	TF42.7-136	NEW	NEW
P40.7	2014	7356hrs	TF35.7-115	2018	657hrs

301.5-05A Excavator	NEW	11002223
301.6-05A Excavator	NEW	11002395
226D3 Skid Steer	NEW	11002221
432-07A Back Hoe	NEW	11002266



Kubota GR1600 ID Ride-On Mower	NEW £POA
Kubota Z122R Zero Turn Mower	NEW £POA
Kubota GR2120S Ride-On Mower	NEW £POA
Kubota L1522 MANUAL Tractor	NEW £POA
Kubota M4073 Tractor	NEW £POA
Kubota M6132 Tractor	NEW £POA
Kubota M125GX111 Tractor	2018 1800 Hrs £POA
Kubota M128GX-2 CAB Tractor	2016 TBC £POA
JOHN DEERE 6830 Premium	2008 9000 Hrs £POA



Horsepool Grange,
 Elliotts Lane,
 Stanton
 Under Bardon,
 Leicestershire,
 LE67 9TW



sales@cooksmidlands.co.uk



cooksmidlands.co.uk



01530 249191

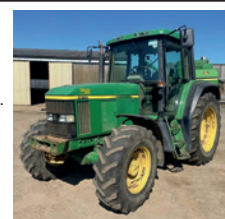


JD 6610 Tractor

1999/Powerquad, 10216 hours,
 380/85r 24 front tyres 30%,
 420/85r rear tyres 90%, 3 spools.
 Good condition for age.

Sold as seen
 £17,500 + VAT.

Contact 07789098498
 Lincolnshire

Welcome to B.O.M
Agriquipment

Professional Agriculture Equipment
 in Scunthorpe

Farming Equipment	Tractor Attachments	Bespoke Machinery	Refurbished Machinery
----------------------	------------------------	----------------------	--------------------------



Follow us to get the latest updates.

When you need high class agricultural equipment to rely on look no further than our services here at BOM Agriquipment Sales and Fabrications.



AGRIQUIPMENT
 SALES &
 FABRICATIONS

TEL: (01724) 783887 FAX: 01724 784242
 BOM AGRIQUIPMENT SALES

Email: bomagriquipment@hotmail.co.uk Web: www.bomagri.com

JOHN C KNIGHT

www.jcknight.co.uk
Email: johncknight@btinternet.com



Orsi WHO 2800 Topper



KV2324M Disc Mower



Welger 235 Roller Baler



NH648 Belt Baler

MF 6499, MF 6460 DYNA 6, MF 5610 + 949 LOADER,
MF 5445 + 946 LOADER, MF 675,
MF275 + 80 LOADER

FOREST FIELDS, FOREST LANE, BELTON, LEICESTERSHIRE LE12 9TN
PHONE JOHN KNIGHT 01509 503296 - MOBILE 07850 936030

WANTED

WANTED

ALL 4X4 VEHICLES

CASH PAID



• ALL LANDROVER MODELS



• DEFENDER 90, 110, SAFARI, VINTAGE OR MODERN



• TOYOTA HILUX, TOYOTA LAND CRUISER

• SSANGYONG KORANDO, RANGE ROVERS, NISSAN, MITSUBISHI, JEEP, ALL 4X4S

FARMERS VEHICLES

07775 998628

Timmy - Braintree, Essex



BPS

Butterfield Plant Sales



Wacker Neuson DW90, 2017



JCB 533-105, 2014



HAMM HD 901, 2017



JCB 3CX Contractor Pro, 2017



Kubota U17-3, 2022



JCB 6T-1, 2018



JCB 3CX Sitemaster, 2019



Hitachi ZX 140W, 2013



JCB 540-140, 2019

Telehandlers

Choice of x2 2019 JCB 540-140
2017 JCB 540-140
2016 JCB 540-140
2014 JCB 533-105
2014 JCB TL7 35D
2008 JCB JS290 LC

Backhoe Loaders

2018 JCB 3CX Contractor
2014 JCB 3CX Contractor
2008 JCB 4CX Sitemaster
2006 JCB 3CX Sitemaster
2004 4CX Sitemaster

Other

2014 JCB Fastrac
2016 JCB VMT 260-120
Vermeer V-5750 Trencher
1997 CAT 950F
1995 JCB 926B
Aveling Barford DC013
1990 HAMM HW90/10

Miscellaneous

Breakers
Truss Jibs
Selection of Tyres
Plant Trailers
Tipping Skips
Sweeper collectors
Wheel Rims
Selection of JCB Spares

01274873758

info@butterfieldplant.com

www.butterfieldplant.com



QUICKFENCER

Multi 2000

The new Multi 2000 can erect any height of wire up to 3 meters, down to a single strand.

It comes with the tilt mechanism and a top link as standard.

This machine is the flagship of the range.



Please contact: John Mob: 07966 285240 or Steve Mob: 07931 511090
www.quickfencer.com • Email johnquickfencer@yahoo.co.uk

To book your space in the next issue -

September/October - call Fran on

07764 230515 or email

Frances.Taylor2@btconnect.com

www.wrightsregister.com

Wrights
FARMING REGISTER

Wrights
FARMING REGISTER

MACHINERY FOR SALE

Wilson's Machinery Sales

Tractors and Wheeled Machines

1984 Ford 6710 2wd bubble cab, trima loader, 1 owner machine from new, UK tractor not an import, 4800 hours from new, crisis cross engine fitted, very nice thing.....£12750
 2010 CASE JX80 4 wheel drive Trima loader, euro headstock, 2000 hours.....POA
 2007 TEREX/BENFORD 6 Ton Swivel Skip Dumper Roll bar, cummins engine, low hours, works well.....£7950
 2017 Manitou MLT 635- 130PS, 6m Telehandler, cameras, pick up hitch, 80% tyres, Manitou service contract maintained,.....£39,750
 2020 MASSEY 6718 "S" Dyna 6 4121 loader 1300 hrs recent full service, manufacturers warranty remaining.....£75,950
 0000 David Brown 990 2wd High Cab, power steering, straight original thing.....£3950
 0000 David Brown 996 2wd High cab, straight original thing.....£3950
 0000 Allis Chalmers B excellent original example, needs some titivation.....£1500
 1974 Ford County 4000-Four Duncan cab, 1974, all in order, wants felling.....£11950
 2022 Yanmar SV26 2.7 ton digger. 30 hrs only from new. Full set of buckets.....£24,500

Trailers and Livestock Trailers

2020 Bracken 21ft tractor drawn livestock trailer, dividing gate, tarpaulin, hyd brakes, led lights, alloy ramp.....£10950
 2018 AW trailer 28 ft tandem bale trailer, super singles, lovely condition, tool box, bumper bar.....£7900
 2021 Nugent 12ft cattle livestock trailer, light use, ready to use.....£5975
 2022 Cosnet 5.2m/17ft to 6.2m/20ft tractor drawn cattle trailer, sprung loaded loading ramp, hyd brakes, optional divider gate, from.....£8975
 2022 Cosnet 6.2m/21ft optional dividing door. Unused from.....£12450
 0000 Home Made 20ft tandem axle bale trailer, very nice, fixed

axles.....£1950
 0000 BIG K 20ft 2 axle Dolly Bogie bale trailer, Project needs a floor and brakes service to clear.....POA
 0000 Nelson 20 Ft bale trailer project needs floor to clear.....POA
 0000 Brian James 5m/16ft tilt back car transporter with electric winch.....£3950
 2021 Wessex 10ft cage sided trailer. As new condition.....£2000

Pickups and vehicles

2021 Toyota Landcruiser SWB commercial, grey metallic, towbar alloys, air con, 16,000 miles.....£34950
 2019 Ranger Limited 4x4 Double Cab in grey, 42,000 miles, 2.0 twin turbo, towbar, nice example.....£20950
 1969 Triumph Herald 1360 Soft top, white, must be seen to be appreciated.....£6850
 1988 Citroen 2CV Dolly, Rubarb and Custard, fully restored car, galv chassis, only 44,000m miles one owner.....£14950
 2011 Landrover Discovery 3.0 TDV6 Auto, Commercial with rear seat and window conversion, very nice.....£8950
 2016 Landrover Discovery 3.0 TDV6 "Landmark", black, 7 leather seats, full spec car with towbar, 100k.....£18,950
 2006 Man TGL 12-180 12 ton, alloy body hinged beaver tail, use as beaver or flat bed, sleeper cab, air con, manual.....£5950
 2017 Mercedes Sprinter 314 long wheel base van, white, excellent runner, ready to use.....£12950
 018 Mercedes Sprinter 314 New Shape Medium wheel base van in blue, air con, manual.....£15950
 2013 Mercedes Actros 1842 Low Ride, 4x2 full air suspension, full width Streamspace cab, only 300k.....£24950
 2009 Citroen Berlingo Van left hand drive silver, side loading door, air con, 3 seats.....£3950
 2018 Isuzu V-Max blade double cab pick-up, 25,000 miles. £22,950
 Car 4x4 derived trailers
 Brian James A4 Transporter Trailer 2600kg, 16ft.....£3500
 Dale Kane 16 ft Low Loader, beaver tail plant tri axle trailer, with electric winch, nice condition.....£5950

Ifor Williams 12 ft twin axle, general purpose fixed sided trailer, with sprung loaded ramp.....£1975

Machinery

JOHN DEERE Muck grab, excellent order euro brackets.....£990
 MX BUCKET GRAB 6 ft, lovely condition.....£1400
 Twoose 8ft Flat Grass Roller, nice condition.....£950
 Tandem Fleming Flat Grass Rollers 10 ft each.....£2800
 Lucas Castor 60R Straw Chopper, swivel chute, handles silage and straw, only used for straw, 2013.....£7950
 Major Topper fully offset, trailed, folding, 12ft approx cut, 540 pto.....£8500
 Opico 6M harrows Optional Seeder Box, good condition, EPOA ALO Quadragrip, Trombone bale handler, Euro Brackets, piped ready for use.....£1450
 ALO Round Bale Handler removeable tubes, little used.....£1200
 KRM Spinner 3 ton capacity, nice condition, not average, very nice.....£2950
 4 in One Tractor loader Bucket, Euro Brackets.....POA
 Muck grabs choice of 3, all very nice cond, EURO brackets.POA
 Loader Buckets Euro brackets, selection.....POA
 Silofarmer Twin pic 2 Bale unroller, euro brackets or 3 point linkage detachable headstock and forks, left or right feed.....£3450
 Round bale Slice, net retention, Euro brackets, nice condition.....£2950
 KW Root Bucket 8ft, very nice condition, euro brackets, the best on the market.....£3950
 Full Set JCB 3CX Buckets, unused condition.....POA
 Acrobot Hay Turner, to clear.....POA
 Fleming 3 Metre Grass Slitter, with concrete weights, little used.....£3950
 McHale Soft Hands Bale Squeezer, euro brackets, nice condition.....£975
 Ritchie Crush width adjuster doors, self locking head-yoke, hydraulic super scoop, great condition.....£2150

Viewing by appointment



Tel: 07860 608050

Email: sw@wihltd.com

www.wilsonsmachinerysales.com

Roll-over sheet kits Self fit kits made to measure



Complete with 900gsm PVC coated sheet,
Powder coated arches, Poles, winding handle,
Ratchets, Straps and all fixings

Prices from £1750 + VAT

Coverttec Structures 01455 698565

www.coverttecagriculturalcovers.co.uk



SHARNFORD TRACTORS LTD



See our advert on page 5



MACHINERY FOR SALE

A. K. R. ELLIOTT FARM SERVICES LTD

www.akrelliottfarmservices.co.uk

Wood Lane, Gotham, Notts

OFFICE 0115 9831359

Mobile: 07860 271912

email: aelliott.farmserv@btinternet.com

NEW AND DEMO MACHINERY

Special out of season deals with Big savings on List prices on all brand new in stock Vicon Machinery listed!!

VICON Extra 124 Rear Mounted Plain Disc Mower List Price £8,700.00

VICON Extra 224 Rear Mounted Plain Disc Mower List Price £10,041.00

VICON Extra 628t Rear Mounted Mower Conditioner List Price £16,969.00

VICON Fanex 604 6 mtr Tedder List Price £11,743.00

VICON Fanex 764 7.6 mtr Tedder List Price £15,683.00

VICON RV5216 Variable Chamber Superfeed Baler List Price £48,490.00

VICON Index 464 Proline 4.6mtr Single Rotor Rake List Price £11,627.00

VICON Index 434 Compactline 4.3mtr Single Rotor Rake List Price £9,159.00

VICON Fanex 524 Compactline 5.2mtr Tedder List Price £8,111.00

2 years warranty on vicon machinery subject to terms and conditions, finance deals available on request subject to status, terms and conditions apply.

FLEMING 3 Mtr Grass Slitter.....£2,200.00

NEW H/D Tractor Mounted 8" Post Hole Borer, PTO Driven.....£1,650.00

NEW H/D Tractor Mounted 6" Post Hole Borer, PTO Driven.....£1,450.00

All out of season prices in stock

TRACTORS

FORD 4600, power steering, puh, Bubble cab, floor gears.....£POA

JCB 3 cx, 4W/D, 4 in one bucket, extra dig.....£6,750

ISEIKI 2160 compact tractor.....£2,200

DB 1390 4wd. c/w DB loader Euro head.....£6,850

MITSUBISHI D1650 Compact tractor, 1050 hrs c/w mitsubishi rotavator.....£3,200

CASE 895 XL 2 wd H Reg.....POA

MF 6465 55 REG 6900 hours.....£20,000

CASE 885 spare or repair drives & runs ok.....£1,800

TELEHANDLERS AND DIGGERS

MANITOU ML732, 2002 year, puh.....£POA

JCB 8016 Mini Digger, 2200 hrs, 2012.....£12,000

SANDERSON TL7 7mt telescopic 1998.....£10,500

MANITOU 626 Hrs 8100.....£10,950

BALERS

VICON RV2160 Baler Wrapper Combination, 48,000 Bales.....£POA

MOWERS, TEDDERS, RAKES AND WRAPPERS

VICON 390 Single Rotor Rake, 2012 model year.....£POA

STIGA Park Royal, front mounted ride on mower.....£1,200

KRONE KW 553T 4 rotor tedder.....£4,950

CNH/KONGSKIDE GXS 280SP mower conditioner.....£POA

VICON 763 6 rotor tedder.....£POA

KV 7515 Bale wrapper for spares or repairs.....£500

MCCONNEL SE4 Topper. C/w wheel & rear chains.....POA

INDESPENSION 10' Trailer.....£1,200

OPICO Hyd fold Grass Harrows.....POA

FLEMING 6' Topper.....£950

VICON CM168 Drum Mower.....£1,200

POTTINGER 2600 plain disc mower 2017.....POA

WESTMAC JF Trailed Mower Conditioner.....£4,500

COMBINES

CLAAS LEXION 430, 20' header.....POA

USED MACHINERY

DAVID THOMAS post knocker.....£300

OPICO flail mower 2.2 mtr H/D.....£950

TWOSE 460 Hedgecutter, VGC.....£2,850

BOMFORD 528 Hedgecutter For Parts Only.....£400

MAURTORI MT40 5ft Flail Topper, 2020 Model Year, Little Use.....£POA

RECO 3MTR Power Harrow c/w Packer Roller.....£1,500

RECO FERRI 2.10 mt flail topper, side shift.....£1050

TAARUP 834 Straw Bedder.....£POA

BROWNS Hydraulic folding grass harrow, 5m, VGC.....£3,800

BEMA 8" Mounted Sweeper Bucket & Tank.....£950

LOGIC Multi Feeder Trailed, C/W Control Box, Suitable for Quad or

Gator Type Vehicles.....£750

LANDQUIP 24MTR Mounted Sprayer, Fully Electronic, C/W Control Box.....£2,000

Folding Wing, End tow 9MTR Cultivator (Simba Type) VGC Requires 200hp.....£2,950

MCCONNEL 512, 3 Point Linkage Digger C/W Ditching Bucket.....£1,550

IFOR WILLIAMS LB505R Double Horse Trailer, In Royal Blue 2006, New Floor Mats

Throughout, Data Tag Registered, Lovely Condition.....£2,500



Fast Moving Genuine Vicon Parts Kept in Stock on Site! Electric Fencing Equipment From Basic to Professional Ranges in Stock.
Visit and Like our Facebook Page @AKRElliottfarmservices for Special offers and Promotions

MACHINERY FOR SALE



Bruce Selby & Son

ATTACHMENTS TO SUIT
WHEELED LOADERS

Pallet Forks / Toe Tips /
GP Buckets

Visit our new website

Tel: 07768 670083 /

01302 882233

email:selvol@btinternet.com -
www.bruceselbyandson.co.uk

TYRES

CLASSIC LAND ROVERS

BRITISH CLASSICS
HERITAGE MOTORS
PARTS 1948 to Date
RETAIL TRADE EXPORT
SPECIAL PROJECTS
RESTORATIONS
MANUFACTURING

Country Workshops, Risegate,
Nr. Spalding, Lincs PE11 4EZ
Tel/Fax: 01775 750223
www.british4x4centre.co.uk

Wrights
FARMING REGISTER

AGRICULTURAL TYRES & WHEELS LTD BOSTON

- Specialised wheel applications
- Floatation specialists
- Rowcrop wheel assemblies
- Stock dual wheels new/used
- Wheels and centre disks
- Wheel modifications
- Second hand & part used
- Part exchange considered

Contact Colin Sims
mobile: 07831 805080
tel: 01205 460081

sales@agriculturaltyresandwheels.com
www.agriculturaltyresandwheels.com

Wrights Broker Service

The safe and reliable way to buy and sell machinery and equipment

Wrights Farming Register offers farmers and contractors a unique service through its team of brokers. They are the 'men in the middle' who give an impartial opinion on the items of machinery they handle on behalf of their clients. The brokers, who currently cover an area stretching from the Scottish borders to the South Coast, can save farmers time and money when it comes to buying or selling anything from a combine harvester to a cattle trough. In these security-conscious days, they also provide a discreet alternative to a public farm dispersal sale and can help farmers avoid the tax pitfalls these can cause.

Shaun van den Bos
 Tel: 01652 618221
 Mob: 07850 978188
 shaunvandenbos@gmail.com
 www.shaunvandenbos.co.uk

Robin Sparrow
 Tel: 07831 886601
 robinsparrow@btinternet.com

Peter Hill
 Mob: 07818 451314
 hillagri@btinternet.com

CONDITIONS CATEGORIES	
EXCELLENT	Full working order, bright and undamaged paintwork, low usage for year.
VERY GOOD	Mechanically sound, will go straight to work, little wear for year.
GOOD	Clean and tidy, mechanically good, may require service or minimal repair.
AVERAGE	Complete unless stated, normal wear and tear for age, may need some repairs.
<i>The descriptions are provided as a guide only and relate to machine condition when inspected by the broker</i>	

WANTED

Contact the appropriate broker if you have any of these items that you would like to sell - they already have customers waiting for you! To locate the appropriate broker, using the area number at the top of the list, see map and contact details on previous pages.

1
John Deere 150 - 170
8 - 10000 Litre Trailed
Bowser.
6M Horsch Drill.
Kuhn 2.4m Mower
Conditioner.
120 by 90 Square
baler Good.
Clear Span buildings
Various sizes.
Maize drill.
Tool Carier Suit Cat
95e Crawler.
Suburu MV pick up
Spares or repairs.
4wd Bonser Rough
Terrain Fork lift.
Binder Knotters.
300 KVA Generator.
2wd MF 2000 series
tractor.
Pellet Extruder for
small pellets.
NH Case Nav 2/3 Or
Equiv Trimble.
Large Claas tractor.
Small trailed sprayer

with electric controls.
MX T412 loader
Brackets NH6020.
Power Loader muck
fork.
5F Variwidth Late
plough.
6 - 8m Hazenbichler
grass harrow.
Low Loader T1a beaver
tail type.
Kubota Ride On
Mower.
360 Diggers 1- 10
ton.
3 Furrow conventional
plough.
Compact tractor &
loader.
12 Ft and 10 Ft Super-
flow drags.
Merlo Grapple fork.
Fodder beet cell
wheels for Web
seeder.
Valtra 8450 + Front
Linkage & PTO.
MX Bale Spike 7000.

12 by 6 lfor 3 ton
Trailer.
Boat Hopper.
340/65 R38 &
480/65R24 Jd
Wheels & tyres.
Hyd drive front
mower.
Small Mill & Mixer.
3.3m Simba
Cultipress
Small Volvo Loading
Shovel.
Simba X Press with
ST Bar.
Kuhn 4, 4.5 & 5M
power Harrows.
12 Row Hyd folding
Beet Drill.
Cousins Levelling
Harrow, hyd folding.
New Holland Rollbelt
150 Baler.
Grimme Colt
destoner.
110 Irrigator,
hydraulic drive.
MF or New Holland

80 by 70 4 string
baler.
4000 gallon slurry
Tanker.
New Holland 8055 or
TX 30 Combine with
AC.
KRM / Sulky 4M Maxi
drill.
Case IH Loader Tractor
ish 80HP 4wd.
Bougham Winch.
John Deere 6600
2wd tractor.
4 row AVR bed tiller.
Amazon Spreader
with weighcells.
6ft Power Grab suit
loader.
Aerzen Blower.
Jones Capper Carrot
topper.
John Deere 120 - 150
HP Tractor.
120FT of Steel grain
tunnel.
Kuhn Or KV 4-5F
Autoreset plough.

14.9 R 46 rocrops Fit
MF tractor.
Cat D4C 2024 Direct
start model.

2
Kuhn 4mt Power
Harrow.
40 to 70 hp Tractor with
Front Loader Must be a
tidy tractor.
140hp to 150 hp Trac-
tor with loader must
be 50k.
County Crawler with or
without 3 point Link-
age. Must be in good
working order.
Kubota Compact 4x4
Tractor must be in good
working order.
SIMBA 6mt Double
Furrow Press.
Massey Ferguson 500
Drill, 4mt, End Tow
, Disc coulters. Must be
in good order

BUYING AND SELLING THROUGH THE REGISTER

- Equipment advertised in the register will normally be located in the area of the representative whose telephone number is shown at the end of each lineage advertisement.
- Call the telephone number accompanying each machine entry.
- Ask any questions about the machine - all equipment is inspected by the Regional Register Sales Representative.
- Arrange to view the equipment to satisfy yourself on its condition and suitability.
- Effect payment (in Pounds Sterling) by doing a deal through the Regional Register Sales Representative, prior to collection (no commission payable on purchases).
- Discuss your requirements with your Regional Register Sales Representative - he may be able to locate equipment through the 'WANTED' section of the register.
- Contact your Regional Sales Representative (see UK map) to discuss equipment you wish to sell and arrange a viewing.
- Charges are £24 plus VAT for each item valued and entered on the register for three months (3 Register publications).
- Commission charges are negotiated prior to advertising equipment - so you can calculate your net return.
- No sale - no fee. Commission is payable only when an item is sold during the 90 days contracted period.
- All enquiries are handled by the Regional Register Sales Representative who will normally accompany potential buyers to inspect equipment.
- The Regional Register Sales Representative completes all necessary paperwork leaving you free to run your business.

GENERAL TRADING AND CONDITIONS OF SALE AS APPLICABLE TO THE REGIONAL SALES REPRESENTATIVES

1. The Regional Sales Representative shall act as the agent for the seller and is not responsible for any default by the seller.
2. Goods are sold with all faults, imperfections and errors of description. Buyers should satisfy themselves as to the condition of the goods in question. Any statement written or otherwise made by the Regional Sales Representative is a statement of opinion and every person should rely on his own judgement as to all matters affecting the goods.
3. No warranty is given or implied by the Regional Sales Representative nor is any warranty of conditions made by persons representing the Regional Sales Representative.
4. All goods shall be paid for in full on or before collection/delivery. Ownership title will remain with the vendor until full and final payment (including VAT where applicable) is received to the satisfaction of the vendor and the Regional Sales Representative.
5. Commission agreed between vendor and Regional Sales Representative shall be due to the Regional Sales Representative by the seller or owner of the goods in question - immediately the goods are sold within the contract period and monies exchanged accordingly.
6. The seller/owner of the goods in question as described shall indemnify the Regional Sales Representative against all liabilities or claims made by the purchaser (or his servants/agents) loss or damage incurred and shall warrant that he is the true owner.
7. The seller/owner together with the Regional Sales Representative acting on his behalf, shall also warrant that he does not deal as a consumer within the Unfair Contract Terms Act 1977.
8. These conditions of trading shall be governed by and in accordance with the law of England.

ALL PRICES EXCLUDE VAT

IMPORTANT NOTICE: Each of the Regional Register Sales Representatives is an independent trader in respect of his area set out on this page (including website). The owner, and publisher of this publication, Kelsey Media, is not connected with such Regional Register Sales Representatives and accepts no responsibility to persons dealing with such Regional Register Sales Representatives whether in negligence or otherwise and does not enter into any contractual liability with any purchaser or other persons dealing with the Regional Register Sales Representatives.

1 AUGERS

S9957 BRICE BAKER 18ft 4.5 inch straight auger c/w 2.2Kw 3 phase motor. Tidy little auger **Good condition £200** ☞ Shaun 07850 978188

S10394 IDEAL MAYRATH 6 inch transmatic auger, on trolley, single wheel each end. C/w 3 phase motor and bottom guard. Appx 28FT long. **Good condition £450** ☞ Shaun 07850 978188

S10164 RECO Transmatic 4.5 inch auger c/w 2 wheels and 5.5HP 3 phase motors. Appx 27ft long **Good condition £300** ☞ Shaun 07850 978188

2 BALERS AND BALE HANDLING

S10271 RIPVATOR RBS 840 mounted bale squeezer carries 40 bales on loader or 3 point linkage. Appx 2.1m wide by 1.8m tall. Could get 48 on at a push **Good condition** ☞ Shaun 07850 978188

PH0004 JOHN DEERE 456A conventional baler c/w cooks windrower flat eight bale sledge. **Good £4250+Vat** ☞ Peter 07818 451314

S10375 JOHN DEERE 456A conventional square baler with 65" pick up with winch lift. Fitted Autolube and hydraulic density. Stored inside but not used lately **Very Good condition** ☞ Shaun 07850 978188

S10270 BROWNS 40 bale mounted 3 point linkage squeeze type bale carrier appx 2.6m wide and 1.8m tall. Double acting ram opens and closes onto bales. **Good condition** ☞ Shaun 07850 978188

S9900 2003 MASCUS 1800 mounted round bale wrapper for stationary field operation. Can use 750 & 500mm rolls of wrap. Done appx 200 bales a year. **Good condition £1,200** ☞ Shaun 07850 978188

RS1303 CHAPMAN



Flat 10 conventional bale accumulator in good working order. Ready to go to work. More pictures on request **Very Good condition £450 o.n.o.** ☞ Robin 07831 886601

S10188 COOK Flat 10 Trailed traditional type bale sledge, like the flat 8 but with folding wings for transport which accommodate the 10 bales. Repainted blue **Good condition** ☞ Shaun 07850 978188

S9773 LSM WR 5000F Hydraulic 3 point linkage compactor for compressing waste cardboard & plastics. Makes a bale of 80 x 90 x 120 cms. Fitted with 2 spools to operate alongside **Very Good condition £5,500** ☞ Shaun 07850 978188

S8591 BROWNS Juggler flat 8 bale sledge, hydraulically operated to follow conventional small baler. Choice available **Good condition** ☞ Shaun 07850 978188

RS1448 BALE SPIKE single to fit Manitou and 3 point linkage. Photos on Request. Location Keniworth **Good condition £350** ☞ Robin 07831 886601

RS1518 BROWNS Flat 8 accumulator & grab in good working order. Photos on request. Delivery can be arranged at cost to be agreed. Sale due to retirement. Located near Kings Lynn **Good condition £650** ☞ Robin 07831 886601

S10395 NEW HOLLAND 377 Hayliner conventional baler with good pick up. Side and top chamber tensioning. Recent tyres. Manual lift pick up with end wheel. **Good condition** ☞ Shaun 07850 978188

3 BEET HARVESTING EQUIPMENT

RS1391 C T M



950 RS beet cleaner loader with Dutze Deisel engine. Starts on the button. Hydraulic fold, hopper extension, double chain link cleaner web, twin Brocklemer unloading web. In use last autumn. **Very Good condition £6,500** ☞ Robin 07831 886601

S10146 HOUSEHAM 12 row front mounted beet hoe. C/w 4 blades per head and depth wheels. Plus rear mounted wheel eradicator toolbar. **Good condition £500** ☞ Shaun 07850 978188

S10398 STANDEN



Multivator 12 row hydraulic folding front mounted interrow hoe. Set up for sugar beet in 20 inch rows. Each unit has 2 or 3 A shares on spring tines and 2 side shares. Comes with hydraulic lifting frame to fit JD 6155 **Good condition** ☞ Shaun 07850 978188

S10397 TERRY JOHNSON Todd Mk V1 Cleaner loader with recent electric start Lister L series engine, legs extended to improve load height. Good Rod link bottom web and Continental unloader web. Straight & tidy **Good condition £2,750** ☞ Shaun 07850 978188

4 BUILDINGS/STORES

S10085 CLEAR SPAN 60 by 30 Building Complete with all painted I section framework inc cross supports and Galvanised steel purlings and bolts. Plus all the plastic coated green steel sheets 4.7m & 3.7m long. Building height appx 3.4m. Taken down ready to load **Very Good condition** ☞ Shaun 07850 978188

S10276 ETA 0.55 Kw roof mounted fan appx 60cms by 50cms diameter. Single phase **Good condition** ☞ Shaun 07850 978188

S10275 CLARKE Floortec 350 Electric pedestal floor sweeper. C/w dustbox and side suction. Appx 65 cms wide. **Good condition** ☞ Shaun 07850 978188

S10054 MILD STEEL MEZANINE TYPE Platform 15ft by 14ft 6" frame in 6ins I section Mounted on 7 legs made of 80mm box section (2.4m tall) Chequer plate deck with railings round 45 ins high. Platform splits with widest section 9ft 6in for transport. Suit indoor or Gantry outside. Choice of 2, one still up, one dismantled ready to load. **New condition £5,000 each** ☞ Shaun 07850 978188

5 COMBINE HARVESTERS AND EQUIPMENT

S10156 CLAAS side knife hydraulically driven with 1.3m cutterbar, ex Lexion combine **Good condition £400** ☞ Shaun 07850 978188

S10379 1989 NEW HOLLAND



8070 Mechanical drive combine with Aifo Fiat engine, straw chopper and Air con cab only done around 2500 hours on 2 neighbouring farms. 15ft high capacity header with full width fingers and bed trolley. As new 28.1 - 30 tyres. Fine example of on off. Probably the best combine ever made **Very Good condition £18,750** ☞ Shaun 07850 978188

RS1445 1982 JOHN DEERE



1065 combine harvester. 12ft cut, SG5 cab with heater & Chiller. 3300 hrs tidy ready to go to work. More pictures on request. **Very Good condition** ☞ Robin 07831 886601

S10377 CLAAS



Dominator 96 combine with hydro gearbox and turbocharged Merc engine. Plus straw chopper and chaff spreader. Done 3471 hours. 60% 23.1 - 26 tyres and 12.5 - 18 rears, 15 ft header available on flat bed trolley. Very straight & tidy. Example of top spec combine in its day **Good condition** ☞ Shaun 07850 978188

S10110 MASSEY FERGUSON



38 Combine harvester, hydrostatic drive, Air con cab, Straw chopper & Chaff spreader. C/w 18ft Powerflow table with trolley. 30.5 - 32 drive tyres & 500/60 - 22.5 rears. Straight & tidy. Second machine for spares if required **Good condition £9,500** ☞ Shaun 07850 978188

RS1408 NFM



Combine header trailer. 4 wheel heavy duty adjustable header trailer. Made to fit MF Super flow header but will fit other. Location near Fakenham More pictures on request **Excellent condition £2,850** ☎ Robin 07831 886601

S10105 NEW HOLLAND 13ft header. Quick attach type to suit early 8000 series combines. C/w mechanical reverser, stone hump, lifters, side knife, spare knives and bed trolley. **Good condition** ☎ Shaun 07850 978188

S10374 1989 JOHN DEERE



1188 Combine c/w SG2 style cab, montors up RH pillar. 4 speed mechanical transmission. Straw chopper and 818 header. Good paintwork for age but done 3613 hours. Kept under cover and runs well. A lot of combine for the money **Average condition £7,500** ☎ Shaun 07850 978188

S10324 MORTL side knife electric type, suitable for combine bed fitment (East Yorks) **Good condition** ☎ Shaun 07850 978188

6 COMMERCIAL VEHICLES AND EQUIPMENT

RS1485 2010 REXTON



2.7 commercial 4 wheel drive. Fitted with Mercedes 5 cylinder 2700cc engine and 5 speed gearbox with Bose electrics, tow bar full electrics & digital Tacograph. Full years MOT. Has been in daily use. Reason for sale vendor retiring. Location Thaxted Essex **Good condition £2,750** ☎ Robin 07831 886601

7 CRAWLERS AND EQUIPMENT

S10214 CATERPILLAR 951 tracked loader with good 4 in 1 bucket fitted good teeth. Tracks decent cab fair but short of front window. Starts and runs well **Average condition £6,000** ☎ Shaun 07850 978188

S10392 2005 AGCO



Challenger MT 765 rubber tracked Crawler, with very good tracks and autosteer ready. Appx 8350 hours. Very sharp machine, kept under cover **Very Good condition £50,000** ☎ Shaun 07850 978188

S10304 MASSEY FERGUSON



154C Lightweight Crawler on Good 12" tracks with Full cab, 3 point linkage, weight frame and PTO. Fully repainted with new seat cover. Showing 4977 hours. Starts up straight away **Very Good condition** ☎ Shaun 07850 978188

8 CULTIVATION EQUIPMENT

S10318 2006 OPICO HE VA



3m disc roller mounted model with 2 rows of angled cutaway discs 475 - 495mm diameter plus DD style rear packer roller and 4 maintenance stands. Mounted on 3M HE-VA Combi lift toolbar with 6 subboiling tines. Well built machine not seem much work. **Very Good condition £7,950** ☎ Shaun 07850 978188

S10051 FARM FORCE trailed folding press fitted 2 rows of cast rings and leading tines. Folds up on one side to match HR 46 discs. Appx 4m working width **Very Good condition £2,500** ☎ Shaun 07850 978188

S10136 ARMSTRONG AND HOLMES pressure harrow 5 section hydraulic folding frame harrow with curved teeth fitted reversible points. Appx 5.5m working width. **Good condition £600** ☎ Shaun 07850 978188

S10221 2011 KVERNELAND



CTS Evo choice of 2 nice machines with 4 front 340/65-15 swivelling wheels. Row of angled discs appx 430mm. 2 rows of legs with top leaf springs and wide A shares or reversible points with narrower A tips (one end tungsten finished). 2 of 550/60 - 22.5 transport tyres. Row of sublift tines and Kerner packer. **Very Good condition £10,000 ono** ☎ Shaun 07850 978188

S10303 KVERNELAND Kultisvans 5.3m manual folding cultivator, 3 rows of C tines with std reversible points. 6 depth skids. Good apart from paintwork **Good condition** ☎ Shaun 07850 978188

S10134 4.8M MANUAL FOLDING Springtine harrow. Well made in 40mm box, folds for transport **Good condition £400** ☎ Shaun 07850 978188

RS1461 GANG ROLLS



5m trailed ring rolls 3m center & 2 1m Pups. Located near Spalding. More pictures on request **Good condition £1,250 o.n.o.** ☎ Robin 07831 886601

RS1497 BOMFORD



2.6m Dino Drive working width 10ft in good working order tines 80% good. New rotor bearings. Ready to go to work. More pictures on request. Located near Leicester **Average condition £650 o.n.o.** ☎ Robin 07831 886601

S10222 2005 KVERNELAND CTS 4.5m trailed cultivator, 4 10/5 65 - 16 swivel wheels, angled discs, 430mm. 13 sprung A shared legs in 2 rows. 2 x 550/60 - 22.5 Tyres. 7 sub tiller legs, levelling boards and packers. **Good condition £3,950** ☎ Shaun 07850 978188

S10341 EDLINGTON



4.6m trailed heavy duty press fitted 2 rows of straight leading tines and 2 rows of 600mm cast rings. 2 wheels at back to transport fitted 60% 340/55 - 16 tyres. **Good condition £3,000** ☎ Shaun 07850 978188

S10017 MASSEY FERGUSON 6.2M Heavy Duty hydraulic folding Springtine cultivator, Strong S tines in 4 rows. 2.2m centre section plus 2 x 2m wings each with 6 - 9 pneumatic tyred wheels. Safety stay bars included **Good condition £850** ☎ Shaun 07850 978188

RS1404 BROWNS PAN Buster Tractor Mounted 4 mt twin Leaf Spring Tined Cultivator. A good strong bit of kit. Sorry no pictures. Located near Kings Lynn **Average condition £500** ☎ Robin 07831 886601

RS1458 FARMFORCE front mounted press 3 point linkage furrow press. All rings sound. Pictures on request **Good condition £500 o.n.o.** ☎ Robin 07831 886601

S10399 FARM FORCE 1.5m front press fitted 10 heavy cast 40 degree 28 inch rings. C/w adapted frame to fit on tractor front linkage with slight steerage. **Good condition** ☎ Shaun 07850 978188

S9904 FARM FORCE 1.5m simple front single cast iron ring press. Slight steerage. **Good condition** ☎ Shaun 07850 978188

RS1505 SIMBA X PRESS



4.6 mt trailed culti press fixed leading tines 2 rows of angling cutaway discs followed by pressed steel pressure wheels & hydraulic transport wheels in excellent order. More pictures on request. Located near Leamington Spa, Warks. **SEEDER UNIT NOT INCLUDED Very Good condition £12,500 o.n.o.** ☎ Robin 07831 886601

S10407 2013 GREAT PLAINS DTX



300 3m mounted disc cultivator with DD packer at the rear, 2 rows of angles discs and 5 subsurfaced legs with Spalding flat lift bottoms. Later green livery **Excellent Cond £14750** ☎ Shaun 07850 978188

S10029 MARSTIG 12ft 3 bar folding mounted double coil springtine cultivator with good reversible points and following harrow. Solid strong little springtine. **Good condition £350** ☎ Shaun 07850 978188

9 DE-STONERS

S10381 2011 STANDEN PEARSON Uniwebb trailed destoner with 1500 wide 45, 45, 45 36 webs and no stars. Very tidy machine. Always barn stored **Excellent condition** ☎ Shaun 07850 978188

S10191 REEKIE 300SA Trailed 3 web destoner with 40mm Webs, front clod rotor, no boulder box **Good condition** ☎ Shaun 07850 978188

RS1126 2000 NETAGCO REEKIE



Bedformer 2 row. C/w markers. All new metal. Front or rear mount with tractor or bedtiller. Ready to go to work. More pictures on request. Transport can be arranged at cost to be agreed **Very Good condition £1,000 o.n.o.** ☎ Robin 07831 886601

S10192 GRIMME Bedforma twin large bodies with stainless steel rollers on body ends. **Good condition £1,200** ☎ Shaun 07850 978188

10 DISC HARROWS

S10122 PARMITER UTAH 250 trailed disc harrows 3.9m working width. Ratchet adjuster for cut & width. 23" cutaway front discs and 25" plain rears. Hydraulically lifting transport wheels with 15/56 - 17 tyres. **Good condition £1,850** ☎ Shaun 07850 978188

RS1309 QUIVORNE



4 mtr 'X' formation disc harrow. Half plain & half scalloped or (cut away) hydraulic transport wheels. Transport width 3mtrs. More pictures on request **Good condition £4,000 o.n.o.** ☎ Robin 07831 886601

RS1498 PETTIT trailed discs. 10ft working width with hydraulic transport wheels. Front cut away discs & 5% good rear plain discs 75% good. Pictures on request. Located near Leicester **Good condition £550** ☎ Robin 07831 886601

RS1459 OVERUM



X disc harrows 16ft hydraulic folding, hydraulic transport wheels. In good working order. In use last autumn. More pictures on request. Location Kings Lynn **Very Good condition £3,850 o.n.o.** ☎ Robin 07831 886601

11 DRIERS

S9555 BENTALL SIMPLEX MFM portable drier rated up to 20 TPH. Fitted Auto control panel, 3 phase powered with diesel burner. Top fill and unloads with cross auger under front. Appx 6.7m long inc wheels at back 2.7m wide & 5.2m tall **Good condition £2,000** ☎ Shaun 07850 978188

PH0002 PTO driven crop dryer fan 3 point linkage **£1000+Vat** ☎ Peter 07818 451314

12 DRILLS

S10094 RANSOMES Nordsten 4m mounted grain drill. C/w 33 Hoe type coulters, following harrow, tramlining and long ram markers. 11.5/80 - 15.3 tyres 50%. Later model tidy drill kept under cover **Good condition £600** ☎ Shaun 07850 978188

S9978 1997 VICON LZ 505 4m mounted Suffolk coulters drill. C/w Greenland T400/70 1000 rpm power harrow c/w 60% blades and Flexicoil crumbler. Drill has 2 rows of coulters, following harrow, double disc markers, PTO driven fan and access step. **Good condition** ☎ Shaun 07850 978188

S10396 1995 LELY



3m Combimatic drill for power harrow mounting. Good Suffolk coulters in 2 rows, hydraulic markers, access step, Pre emergence markers. Grey metering and hopper cover. **Very Good condition** ☎ Shaun 07850 978188

RS1305 K R M



Solar 799 Pneumatic 4 mtr 32 tined seed drill 12.5cm (5") spacing both drill tines and front Cultivation Tines. All spring break back as well as spring tined covering. Harrow beautiful. Well cared for drill. Dry stored. New heavy duty PTO shaft **Excellent condition £14,500 o.n.o.** ☎ Robin 07831 886601

RS1476 2019 KUHN



HR 4004 4m power harrow combination drill. C/w Tungstun power harrow tines, track eradicators & LC402 combi liner drill. Only done 600 Hectares. It comes with Fraser 4.5m 8 ton low loader transport trailer & many spare parts/ Located near Atherstone, Warks. More pictures on request **Excellent condition £28,000** ☎ Robin 07831 886601

S10404 FERRAG Monopill S 12 row hydraulic folding precision drill just overhauled ready for work in new coulters etc. Hydraulic markers floatation tyres. Each unit has front clod pushers, soft rubber press wheels, steel coulters, beet discs, levelling bars and grooved rubber press wheels. **Very Good condition** ☎ Shaun 07850 978188

S9976 MF 30 4m 23 row disc coulters, grain and fertiliser drill on 14.9 - 24 tyres. 10 fluted grain metering rolls, 5 fluted fertiliser rolls, question mark over the partitions so used as grain only recently. Fitted end tow kit, following harrow, access step, hydraulic markers & wheel erradicators **Good condition £900** ☎ Shaun 07850 978188

S10137 2009 KRM Soladrill 799 48 sprung loaded hie coulters 6m hydraulic folding drill. Hopper extensions enable holding a ton of seed. Access stem, pre emergence marker shuts off 3 rows and leaves a single mark. RDS in cab box with hopper alarm. **Very Good condition £7,750** ☎ Shaun 07850 978188

S10366 2012 AMAZONE ED452



6 row maize drill. C/w fertiliser attachment. Outside rows fold in to transport, hydraulic markers & road lights. Drilled appx 3 - 400 acres a year. Nice drill **Excellent condition £9,950** ☞ Shaun 07850 978188 **RS1386 KLEIN**



Unicorn 12 row beet drill, chain driven, finger wheel covers, hydraulic bout markers, end tow for transport. Very clean. Ready to go to work. Old but well looked after. More pictures on request **Good condition £1,550 o.n.o.** ☞ Robin 07831 886601 **S10400 WEAVING**



4m mounted sprung tine hoe coulters combination drill to fit on a power harrow. Hydraulic fan drive, land wheel metering drive, access step, following harrow, markers stands and double disc pre emergence markers. Ready for work **Very Good condition** ☞ Shaun 07850 978188

S10310 MF 30 4m disc coulters G & F drill fitted 10 fluted rollers, decent discs, double erradicator tines. End tow kit. 13 - 24 main tyres. **Good condition** ☞ Shaun 07850 978188

RS1420 2006 KUHN drill combination 3m power harrow. C/w drill combination. Dry stored. Tines 80% good. Ready to go to work. More pictures on request. Located near Stratford on Avon **Very Good condition £14,500** ☞ Robin 07831 886601

13 ELEVATORS AND CONVEYORS

RS1508 CARRIER grain conveyor 24ft long x 8" wide. Dismantled ready for transport. Pictures not yet available. Located near Maidstone **Good condition £400** ☞ Robin 07831 886601

RS1440 FYSONS Y track 27ft 3 phase elevator. C/w various hoppers and extension side boards. Dry stored, not been use for 3 yrs. Pictures shortly. Located near Litchfield, Staffs **Good condition £2,500 o.n.o.** ☞ Robin 07831 886601

S10062 HERBERT soil elevator wide flat belt, first section 7.5m plus drop down head 2m. Both power hydraulic up & down **Good condition** ☞ Shaun 07850 978188

S10337 FYSON Dockloader 40ft high capacity heavy duty belt elevator with 15kw 3 phase motor & 3m wide tipping hopper. Loads over 300 TPH. Hydraulic up & down. Industrial 8.25 - 15 tyres **Good condition £2,950** ☞ Shaun 07850 978188

S9509 TROUGH auger tapered flight appx 3.7m long to fit in a hopper or pit bottom. Also unloading elevator if needed. **Good condition** ☞ Shaun 07850 978188

S10061 SWIFTLIFT elevator 9m by 600mm belted elevator c/w standard man swivel wheels, small circular hopper, hyd up & down. 3 phase. Brackets for head. **Average condition** ☞ Shaun 07850 978188

RS1341 FYSONS



28ft Y track elevator. C/w 10ft slewing extension, 3 phase electric, hydraulic drive wheel. Only been used for grain, excellent condition. Can be delivered at cost to be agreed. More pictures on request **Very Good condition £3,500 o.n.o.** ☞ Robin 07831 886601

RS1507 PERRY Angleveyor 34ft high X9" belt 3 phase electric. Dismantled ready for transport. Location near Maidstone. Pictures not yet available. **Good condition £400 o.n.o.** ☞ Robin 07831 886601

RS1506 CARRIER grain elevator 34ft high X 9" belt 3 phase electric. Dismantled ready to transport. Location Maidstone. Pictures not yet available. Transport can be arranged **Very Good condition £650** ☞ Robin 07831 886601

14 FANS

S7231 TYPHOON TCB 7 single phase portable fan, RH Inlet, 4" round outlet. 0.25KW motor 2.1 amps 2800 rpm. **Good condition £295** ☞ Shaun 07850 978188

S10353 2000 AKRON 5.5 HP portable fan appx 28 ins by 34ins tall 13ins across. Handy little fan. Also a 20 ins by 19 ins Axial fan. C/w 3 phase motor **Good condition** ☞ Shaun 07850 978188

S9958 KONGSKILDE HVL 100 LH inlet portable fan with two small rear wheels to barrow about 3 ft diameter by 16 inch across. Round 19 inch outlet 7.5 Kw 3 phase motor & starter. Runs smooth **Good condition £500** ☞ Shaun 07850 978188

15 FEED AND FORAGE BOXES

S10333 MAILLEUX MX feeder bucket single auger, LH discharge, 8ft wide with hydraulic drive & door. Fitted manitou brackets. **Very Good condition £1,500** ☞ Shaun 07850 978188

RS1441 MC HALE



60" shear grab. Well used but in good working order **Good condition £750** ☞ Robin 07831 886601

S9479 ABBEY VF 1450 trailed vertical auger 14.5 cubic meter mixer wagon. Single axle on twin wheels. Fitted hydraulic opening rear door, left & right 800mm front discharge. Digi Star EZ 3200 on board weighing. **Good condition** ☞ Shaun 07850 978188

16 FERTILISER SPREADERS

S10364 2006 AMAZONE ZAM 1200 mounted spinning disc spreader with 1000 litre & 1500 litre hopper extensions. Plus Headland attachment **Very Good condition** ☞ Shaun 07850 978188

S10349 2019 KUHN



MDS 19.1 D2 spinning disc fertiliser spreader with hopper extension rated at 1800 Kgs. Fitted double shut offs and M1 C discs. Plus hopper cover. Little used on small farm. Stored inside **Excellent condition £3,700** ☞ Shaun 07850 978188

RS1236 K R M 2.5 ton hopper, 4 x 600 kg bags, twin disc spreader, stainless steel discs, set to 24 mts but will do 36 mtr. Constant weighing electronic control box, fold over hopper cover, full road lighting. More pictures on request **Very Good condition £3,500** ☞ Robin 07831 886601

RS1490 STOCKS fan jet slug pelleter to fit quad bike. Pilly hopper, electric drive. Used last autumn. Located near Banbury **Very Good condition £800** ☞ Robin 07831 886601

S10296 AMAZONE ZAF 804 R mounted twin spinning disc fertiliser spreader with discs suitable for 12 - 15m spreading. Fitted single hydraulic shut off. Used once a year on small farm then stored inside **Good condition £350 o.n.o.** ☞ Shaun 07850 978188

S9770 AMAZONE ZAM 1000 mounted twin disc fertiliser spreader. C/w hopper grids, hydraulic shut off and headland disc. **Average condition £450** ☞ Shaun 07850 978188

S10130 2017 VICON RO XL Rotoflow fertiliser spreader. Fitted 2 alloy hopper extensions, hopper cover mudguard in front. **Very Good condition** ☞ Shaun 07850 978188

S9578 VICON 602 Varispreader to spread 12m Includes white & black spreading bands & tubes, greasable bearings and hydraulic shut off. NSTS ticket 30 - 08 - 19. Holds 600kgs **Very Good condition £800** ☞ Shaun 07850 978188

S10272 2008 AMAZONE



ZAX 1402 mounted spinning disc spreader. C/w twin hydraulic shut off, hopper extension and grid. 12 - 18m discs. Used once as new. **Excellent condition £3,000** ☞ Shaun 07850 978188

S10090 BOGBAILLE E7 773 twin spinning disc fert spreader. C/w hydraulic shut offs. Basic spreader seen little use & stored inside **Very Good condition** ☞ Shaun 07850 978188

RS1516 AMAZONE


ZAF 1200 twin disc ferterlizer spreader. Only been used to sow grass seed. All steel hopper NO rust, hydraulic shut off **Good condition £550 o.n.o.** ☎ Robin 07831 886601

S9916 AMAZONE ZAM mounted twin disc fertiliser spreader. C/w twin hydraulic shutoffs 21m, 12m & headland discs. Hopper extension & Cover. Ex Small farm **Good condition £1,850** ☎ Shaun 07850 978188

17 FORKLIFTS AND HANDLERS

S10232 STRIMECH grain bucket suit Matbro appx 7ft 6ins wide. Straight enough and fitted with extended wear plate **Good condition** ☎ Shaun 07850 978188

S10403 2020 SUTON beet basket 2.26m³ with Matbro ring fittings. Only used for a season. Sound solid bucket **Very Good condition** ☎ Shaun 07850 978188

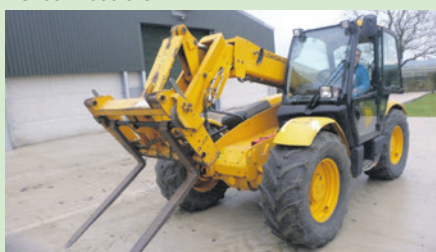
RS1361 STRIMECK


box rotator like new. Hardly used side clamps, Manitou brackets. More pictures on request. Transport can be arranged at cost to be agreed **Very Good condition £3,250 o.n.o.** ☎ Robin 07831 886601

S10169 PALLET TRUCK SHOP printers model pedestrian manual pallet mover. Fitted 800mm tines rated 2500 kgs. Well made and hardly used **Very Good condition** ☎ Shaun 07850 978188

S10101 MANITOU manure fork. C/w 8 tines & hydraulic top grab. Repainted **Good condition £1,250** ☎ Shaun 07850 978188

S10277 BV WESTERGARD pallet truck. Pedestrian pallet truck with 1m long tines @ 0.5m centres. **Good condition** ☎ Shaun 07850 978188

RS1504 2005 J C B


530 70 loadall farm special 4x4 wheel steer, crab steer P U hook hydraulic 3rd service. One owner driver from new. Dry stored. Tyres 60%, hours old clock 4150 hrs. New clock fitted 2010 only 1237 hrs, total 5387. A lovely clean machine well looked after. More pictures on request. Located near Shipston on stour **Excellent condition £25,500 o.n.o.** ☎ Robin 07831 886601

S10165 STRIMECH manure fork 7ft 6 ins wide. C/w top grapple attachment and Manitou brackets. Reasonable order. Handy to have **Average condition £700** ☎ Shaun 07850 978188

RS1432 COVENTRY CLIMAX


1950KG diesel forklift not been used for 12 months. Brakes now need attention. Starts on the button. Dry stored. More pictures on request. Transport can be arranged **Average condition £1,750 o.n.o.** ☎ Robin 07831 886601

RS1520 1994 MANITOU


Manireach 626 Perkins engine 8400 hrs, 4 wheel drive, brakes reconditioned. Full road lights plus 2 working spot lights, new battery, tyres 90% good. Hydraulic external 3rd service. New cab glass. Very nicely reconditioned almost as new. More pictures on request. Location Kenilworth, Warks **Excellent condition £11,500 o.n.o.** ☎ Robin 07831 886601

18 GRAIN EQUIPMENT

S10354 WALLINGA Agri vac 614 mobile sucker blower on single axle chassis. C/w optional cyclone. Quite tidy but needs new blower **Average condition Offers** ☎ Shaun 07850 978188

S9337 2017 GOUGH ENGINEERING vibrating linear screen mounted in substantial palletised frame with 6 ton detachable hopper above it. Sprung mounted shoe has 2 x 1.5 Kw vibrators on the sides, 2 stainless screens 2 by 1m. Plus set of steel lids. Estimated 30TPH **Excellent condition** ☎ Shaun 07850 978188

19 GRASSLAND EQUIPMENT
RS1489 2009 SITREX


Tedder windrower two star 2m working width. Fold out HayBob style tines. Very clean machine. Ready to go to work. Located near Banbury. More pictures on request **Very Good condition £1,500 o.n.o.** ☎ Robin 07831 886601

S10147 MAJOR grasstopper 605 rear mounted offset 6ft wide single rotor topper. C/w height adjustable side skids **Good condition £500** ☎ Shaun 07850 978188

RS1398 GEO BROWNS


3 flail mower. C/w hydraulic sideshift multi point CAT 2 Linkage. Whale tail cast steel flails, H D rear roller, opening rear access door. More photos on request. Over run gearbox **Excellent condition £4,850 o.n.o.** ☎ Robin 07831 886601

S10075 LELY Lotus 300 twin rotor hay tedder. C/w good tyres & rakes. Mounted PTO Driven. Appx 3m breed **Good condition £350** ☎ Shaun 07850 978188

S10251 2012 LELY Splendimo 320 MC Mounted 3.2m mower conditioner with Nylon conditioning fingers. **Good condition £4,000** ☎ Shaun 07850 978188

S10342 2006 ORTOLAN


TSB 280 mounted 2.8m heavy duty flail mower with hydraulically offsettable headstock and rear roller. Well built machine little used. **Good condition £2,350** ☎ Shaun 07850 978188

RS1494 VICON


CM168 2 drum mower. Good clean machine, dry stored. Reason for sale, got bigger tractor and does not fit. More pictures on request. Located near Banbury **Very Good condition £2,000** ☎ Robin 07831 886601

S10250 KRONE AM 2422 mounted mower conditioner, appx 2.4m. C/w hydraulic folding. Tidy for age **Good condition £1,200** ☎ Shaun 07850 978188

RS1367 2018 MAJOR


MJ30 350 cyclone finishing mower tractor mounted PTO driven, hydraulic folding large diameter roller, Muti rotary disc cutters, galvornised hood, full road lighting. Hardly used, as New. More pictures on request. Transport can be arranged **Excellent condition £6,250 o.n.o.** ☎ Robin 07831 886601

BROKERS

RS1493 TANKO autowrap, plastic film, bale wrapper, tidy machine. Dry stored. Not used for a couple of years. **Good condition £1,500** ☎ Robin 07831 886601

20 HEDGE CUTTERS

S10386 BOMFORD



B577 LH 3 point linkage mounted hedger. C/w independent hydraulics operated by 4 cable in cab controls. Fitted 1.35m head with boot flails and roller. Optional 1m head if preferred. Straight tidy farmers hedger **Good condition £2,750** ☎ Shaun 07850 978188

S10091 BOMFORD B577 LH 5.7m reach 3 point linkage hedger. C/w 1370mm head with roller. 3 lever in cab controls. Well maintained machine with many new ram seals etc **Good condition £3,500** ☎ Shaun 07850 978188

21 IRRIGATION EQUIPMENT

S10204 BRIGGS R50 mobile boom irrigators, choice of 2 galvanised machines running on 7.50 - 16 Wheels. 72m breed to cover 36m. Fully adjustable chassis widths suit most row widths. One with rain gun included **Very Good condition £3,250 each** ☎ Shaun 07850 978188

S10347 IVECO



8361 irrigation pump mounted on single axle chassis with Iveco 6 cylinder engine fitted 3 stage pump, 5 and 6 inch supply & feed pipes capable of servicing more than one machine. Full engine protection. Built inside acoustic cabinet. **Very Good condition £8,250** ☎ Shaun 07850 978188

S9784 JAVELIN irrigation pipe couplings and fittings in 3 and 4". Good selection **Good condition** ☎ Shaun 07850 978188

S10346 1999 IRRIFRANCE 100 - 450 reel irrigator computer controlled with manual turntable and hydraulic jack legs. 3 wheel gun carriage with Komet twin gun **Very Good condition £5,000** ☎ Shaun 07850 978188

RS1325 CAPRARI irrigation pump powered by Ford 6 cylinder deisel 6ltr engine. Ready to go to work **Good condition £2,500 o.n.o.** ☎ Robin 07831 886601

S10363 JAVELIN



Optima 1035 TI 110 / 500 hydraulic turntable reel irrigator. Electrically controlled with hydraulic jack legs. Leg carriages with Big Gun nozzles. Choice of nice machines stored inside **Very Good condition £8,500 each** ☎ Shaun 07850 978188

23 LIVESTOCK EQUIPMENT

RS1397 2022 WATSON



15ft feed barrier. New Watson cattle feed barrier. C/w 4th side fork lift slots, steel floor. More pictures on request. Located near Huntingdon **New condition £1,350** ☎ Robin 07831 886601

S10322 PAXTON 450 gallon round black polythene field drinker trough. C/w float ball on inlet with cover. Appx 7ft Diameter **Good condition £350** ☎ Shaun 07850 978188

RS1488 IFOR WILLIAMS



Livestock trailer. C/w rear gates. Sheep decks, spare wheel. Full road lights and brakes. Old but sound. Located near Banbury Oxon. Pictures on request **Good condition £1,250** ☎ Robin 07831 886601

RS1473 GALVERNISED Calf feeders. 3 of half ton 6 calf feeders. No pictures. Location Bakewell, Derby **Good condition £350 each** ☎ Robin 07831 886601

RS1339 2021 WALTER WATSON



Creep feeder 5 bay calf creep feeder, roller dividing bars 3 point linkage + forklift transport points as standard. Buyer to collect. Location Huntingdon **New condition £1,240** ☎ Robin 07831 886601

S10351 POLYPROPELENE Water tanks. Appx 400 litre each, top fill oblong. Plus 13 of 4ft water drinking troughs for poultry c/w own ball valve. Appx 4ft long made of polypropylene. Also Large quantity of Centreless feed augers and Flex flo 300 plastic tubes with outlet connectors **Good condition** ☎ Shaun 07850 978188

S10350 POLYPROPELENE feed hoppers suitable for ducks etc. Appx 4ft by 3ft some with Feed lids fitted holes for fill pipes. Also Qty of EB suspending round feeders. Plus quantity of Turkey Bell feeders c/w ballast weights. **Good condition** ☎ Shaun 07850 978188

24 LOADERS AGRIC/ INDUSTRIAL

S9981 MF 50B 2wd loader tractor, Peramnent powerfull parrallel lift loader with 2180mm wide soil bucket. Lifts just over 12 ft high. 70% 16.9 R 30 tyres plus 90% BKT 9 - 16 fronts. LHR, rear rev counter and key start. Only 1181 hours. Very tidy **Very Good condition £5,750** ☎ Shaun 07850 978188

S9318 MK AGRITECH Grapple Fork 1.5m wide by 1.1m deep with hood top & bottom tines and JCB brackets. Hardly used **Very Good condition £400** ☎ Shaun 07850 978188

S10372 2020 AUZA



D600 APG 6 tonne self propelled pivot steer dumper truck for site work. Fitted Roll bar, 90% 105/70 R20 tyres and road lights. Seen very little use. Rotating tipping bucket. **Excellent condition** ☎ Shaun 07850 978188

RS1519 MASSEY FERGUSON Potato Bucket to fit M F industrial Loader. New Leading Edge. Pictures on request. Location Kent **Good condition £440** ☎ Robin 07831 886601

25 MILL AND MIXERS

RS1514 FRASER



1 ton roller Mill 1.5 ton fold down hopper. Tractor PTO driven three point linkage mounted power feed approx 1 ton per hour. Dry Stored. More pictures on request. Located near Leicester. Delivery can be arranged at price to be agreed **Very Good condition £2,950 o.n.o.** ☎ Robin 07831 886601

S10182 HUNT 10in roller mill, 3 phase c/w holding hopper above it. All mounted over an Alvan Blanch one ton mixer. Not used lately but still would go. **Average condition** ☎ Shaun 07850 978188

S8502 MARTIN MARKHAM roller mill traditional 5" roller cast frame type. C/w 3 phase motor & starter with stop switch when small hopper above is empty **Good condition £195** ☞ Shaun 07850 978188

RS1491 ALVAN BLANCH roller mixer roller crusher mounted over chain and flight mixer. C/w bagging of shute. Pictures on request. Located near Banbury **Good condition £700 o.n.o.** ☞ Robin 07831 886601

S10077 BAMFORDS No 46 rapid grinding mill, belt driven, mounted on a frame with small hopper above. Suit Collector **Good condition £250** ☞ Shaun 07850 978188

26 MISCELLANEOUS

RS1368 CHARTERHOUSE



verti top artificial surface spoors ground cleaner, tractor mounted PTO driven sand vacume filter. 5ft working width. Good working order. More pictures on request. Location Buckinghamshire **Very Good condition £2,500** ☞ Robin 07831 886601

PH0005 CLAAS single rotor rake. **Good £1950+Vat** ☞ Peter 07818 451314

PH0006 HAYBOB needs TLC **£500+Vat** ☞ Peter 07818 451314

PH0007 STOLL 6 Rotor tedder. **Good £1500+Vat** ☞ Peter 07818 451314

S10357 2001 PERTICI Univer 332P dual head mitre saw, 3 phase 2.3 Kw ideal for aluminium. Good order. **Good condition** ☞ Shaun 07850 978188

S10356 2004 ERMAK



HGS 3100 6 Power Guillotine rated 5500 ks with 11 kw 3 phase motor will cut 6mm sheet. Tidy good bit of kit in tidy order. Ready to use **Very Good condition £6,000** ☞ Shaun 07850 978188

RS1464 ARTIC DOLLY Blacksmith converted on ring hitch, super single wheels. NO BRAKES. Pictures on request **Average condition £500** ☞ Robin 07831 886601

RS1496 SUTTON 6ft toe tip grain bucket to fit tractor loader, in good working order, Photos on request. Located near Banbury **Good condition £500** ☞ Robin 07831 886601

S10167 IBC 1000 litre Polythene containers inside palletised frames. 1.8m by 1.8m. Used for food products. Also quantity of large good quality bait boxes. **Average condition** ☞ Shaun 07850 978188

S8357 GEMCO screw Briquetting press. Stationary horizontal type for making Briquette Fuel from sawdust, tree branches, twigs, waste wood blocks, rice husk, straw etc. PTO Driven. Plus Heating element. C/w wiring to assist briquet formation **Very Good condition £4,000** ☞ Shaun 07850 978188

RS1479 KUHN rear lift linkage to fit piggy back drill to a Kuhn power harrow. Located near Atherstone sorry no pictures **Good condition £500 o.n.o.** ☞ Robin 07831 886601

RS1484 2005 AUTONUMIS



Cornelius 3GS 3 of refrigerated cold white milk pack vending machine. Ideal for café, canteen, school, or farm shop c e mark. Location Thaxted Essex. More pictures on request **Very Good condition £500 o.n.o.** ☞ Robin 07831 886601

S10274 GATE BARRIER Single arm type in 60mm Box 5.3m wide. C/w 2 post each 1.8m by 100mm. Painted Green **New condition** ☞ Shaun 07850 978188

RS1346 WILLIAM WHITE INCINERATOR



Small animal Incinerator, deisel oil fired, electric controlled. Static fork lift slotts if needed. The Vendor will give demo at his farm on request. Located near Chelmsford Essex. More pictures on request. Transport can be arranged at cost to be agreed **Good condition £3,750** ☞ Robin 07831 886601

S9925 NJF MAGNATE 16 KW PTO driven generator, 3 phase. C/w 3 point linkage to mount on tractor. **Average condition** ☞ Shaun 07850 978188

S10265 THOMAS mounted material layer, 3 point linkage mounted to lay material over beds for weed prevention. Galvanised frame 2.5m wide overall will take rolls up to 2m wide. Has 2 rubber height wheels, 4 angle discs and roller. Been used with Tildent Mulchtex 1.5 x 100cm x 50. **Very Good condition** ☞ Shaun 07850 978188

S10092 2005 BLASTLINE 20300 shot blasting pot. Complete with all pipes fittings and safety helmet to shot blast. (No Compressor) **Good condition** ☞ Shaun 07850 978188

27 MUCK AND SLURRY EQUIPMENT

S8978 2017 CE PROJECTS 600 Evolution Separator Stainless Steel 600mm wide screen & roller separator for removing solids from waste liquids. 100mm pipes in & out with 150mm overflow pipe. Only used a short while **Very Good condition £10,000 o.n.o.** ☞ Shaun 07850 978188

S8979 SCREW PRESS 180mm stainless steel auger type to press solids through small stainless screen inside steel tube. C/w 4 Kw geared drive motor **Good condition £2,000** ☞ Shaun 07850 978188

S9401 1997 BATTIONI PAGANI MEC 8000/H PTO driven slurry pump ideal for mounting on slurry tanker. Rated at 8100 litres/min @600 rpm. 1.5 bars pressure. **Good condition** ☞ Shaun 07850 978188

28 PLOUGHS

RS1403 LEMKEN



2mt furrow press. In good working order to match 6 furrow 14" plough **Good condition £750** ☞ Robin 07831 886601

S10044 LEMKIN Variopack 110 24 ring furrow press c/w transport headstock and 30 degree rings **Average condition £400** ☞ Shaun 07850 978188

S10208 GREGOIRE BESSON hydraulic press arm to fit HRDC 7 plough. Folds in hydraulically for transport and releases hydraulically. **Very Good condition £400** ☞ Shaun 07850 978188

RS1434 1999 DOWDESWELL DP120S 9 furrow reversible on land plough fitted with DD bodies skims, depth wheels. Plough metal all good. No breaks or welds. Cat 3 linkage. Many more pictures on request. Transport can be arranged at cost to be agreed **Very Good condition £5,750 o.n.o.** ☞ Robin 07831 886601

RS1456 DOWDESWELL DELTA 100 S 4 furrow 14" reversible on slatted boards hydraulic vari width manure skims & depth wheel. Sorry no pictures. Located near Bury St edmonds **Very Good condition £2,750 o.n.o.** ☞ Robin 07831 886601

RS1261 DOWDESWELL



5 furrow 3+1+1 14 inch reversible plough on DMD bodies. C/w depth wheel & skimmers. More pictures on request **Good condition £1,950** ☞ Robin 07831 886601

S9582 DOWDESWELL 145 Series MA 6 plus 1 (7) furrow on/off land plough. Fitted V good UCN bodies and frogs. Good skims & points. Disc arms only. Good. 11.5/80 R 15.3 depth wheel. Man variable width. 90" point to point 22" underbeam. **Very Good condition £9,000** ☞ Shaun 07850 978188

S10402 LEMKIN 110 Variopack 28 ring furrow press. C/w 30 Degree rings appx 9ft wide. Recently refurbished press. C/w transport headstock suit 5 x 20 inch furrows. **Good condition** ☞ Shaun 07850 978188

S9801 LEMKIN DVL 120 5th furrow. C/w slatted bodies & manure skims. Plus rest of beam broken off at turnover pivot. C/w frogs & skims but no slats. **Average condition £975** ☞ Shaun 07850 978188

S10098 RANSOMES TSR 103 3 furrow hydraulic turnover reversible plough. Decent SCN bodies, one pair on manure skims only. **Average condition £375** ☞ Shaun 07850 978188

S9768 1996 DOWDESWELL DP7 D/2 4 Plus 1 (5) furrow reversible plough, good DD bodies, manure skims on adjustable stalks. Sword landslides, hydraulic front furrow & sound 10/80 -12 depth wheel **Very Good condition £2,000** ☞ Shaun 07850 978188

S10207 LEMKIN Variopack 110 double ring furrow press. C/w transport headstock and 18 of 30 degree rings. Good alround order **Very Good condition £1,000** ☞ Shaun 07850 978188

RS1204 FURROW PRESS



To match 6 furrow plough cast steel rings one broken
Average condition £300 ☞ Robin 07831 886601
RS1454 RABE



4 furrow slatted 14in 3+1 auto reset. C/w manure skims and depth wheel. Plough metal all good. Location Bury St Edmonds. More pictures on request **Good condition £3,250 o.n.o.** ☞ Robin 07831 886601

RS1501 2013 DOWDESWELL



105MA 5 furrow reversible (4+1) on slatted boards, manual variable width. Little ware of the fen, large clearance, manure skims & rear discs, depth wheel. More pictures on request. Located near Spalding **Very Good condition £5,800 o.n.o.** ☞ Robin 07831 886601
S10206 OVERUM BV397F 3+1(4) reversible plough, worn 16in bodies, good trashboards & skims included but not fitted. Very Straight. Includes a hydraulic release press arm. **Average condition £800** ☞ Shaun 07850 978188

S10332 2009 OVERUM Variflex - EX 5 furrow reversible variwidth plough with very good XL bodies, new shares & good points, manure skims & rear discs. 10/6g - 15 depth wheel. Optional hydraulic press arm **Very Good condition £6,750** ☞ Shaun 07850 978188

S10172 DOUBLE RING PRESS C/w top tray for weights etc. Narrow cast rings. ☞ Shaun 07850 978188
S10117 DOWDESWELL DAFP furrow press. Double 30 degree cast ring press for 5 furrow plough, still sharp & sound **Good condition £500** ☞ Shaun 07850 978188

S10311 2009 LEMKIN press arm. Was fitted to a Europal 8 reversible plough. Fitted hydraulic press release. **Good condition** ☞ Shaun 07850 978188

S10368 1988 DOWDESWELL DP8B 3 plus 1 plus 1 (5) furrow reversible with recently new 12in UCN bodies. Manure skims, steel wheel etc. **Good condition £1,500** ☞ Shaun 07850 978188

S10006 DOWDESWELL DP7D2 4 plus 1 (5) furrow plough, 39in point to point 26in underbeam. 14" UCN bodies, hydraulic front furrow, rear discs, 10/80 12 depth wheel. Good rev points & bodies **Good condition £1,950** ☞ Shaun 07850 978188

S10154 DOWDESWELL DP1 5 Plus 1 (6) furrow reversible plough. Mixed 14in bodies 34 point to point. Manure skims, Offset headstock & depth wheel. **Good condition £950** ☞ Shaun 07850 978188

RS1342 DOWDESWELL



MA160 6+1 on land reversible plough SCN bodies, 12 to 18" mechanically adjustable furrow width. New type SN Skims, depth wheel, direct from farm. In use this year. Transport can be arranged at cost to be agreed. More pictures on request **Very Good condition £3,500 o.n.o.** ☞ Robin 07831 886601

S10369 LEMKIN Variopack 20 ring furrow press suitable for 5 furrow plough fitted 65 cms 30 degree rings. C/w hydraulic release arm to fit DP8 plough and transport headstock **Good condition £500** ☞ Shaun 07850 978188

RS1457 K V FURROW PRESS 4 furrow in good working order. In use this autumn. Rings all sound. More pictures on request. Location Bury St Edmonds **Good condition £550 o.n.o.** ☞ Robin 07831 886601
RS1468 KVERNELAND



LB85 5 furrow reversible vari width plough. C/w 240 type headstock. No. 8 bodies. Furrow splitters on shares, manure skims, standard depth wheel. A really good very clean plough in use this autumn. More pictures on request. Transport can be arranged **Very Good condition £3,750 o.n.o.** ☞ Robin 07831 886601

29 POTATO HARVESTERS AND PLANTERS

S9737 REEKIE autoplanter 2 row automatic potato planter with good tyres and fold out wings on hopper sides. 3 ridging bodies on the back. **Very Good condition** ☞ Shaun 07850 978188

RS1436 GRIMME



2 row potato harvester. Fully reconditioned. C/w 50mm webs but 35mm and 60mm also part of the deal. Hydraulic power steering, low level discharge elevator. A lovely clean machine ready to go to work. Reson for sale change of farming Policy. More pictures on request. Located near Bromsgrove Staffs **Very Good condition £5,600 o.n.o.** ☞ Robin 07831 886601

S9306 1995 GRIMME Variant 1700 trailed 2 row manned harvester. C/w Dahlman & Star cleaning modules. Steering & levelling, large rear picking off platform **Good condition** ☞ Shaun 07850 978188

S8959 REEKIE 2 row automatic mounted cup & belt 2 row planter. C/w very good hopper extension, electric monitors, Good 7.50 - 16 tyres and 3 ridging bodies all greased up **Good condition £600** ☞ Shaun 07850 978188

RS1481 2015 STANDEN



side delivery discharge. In good working order. Located near Kings Lynn **Very Good condition £2,780 o.n.o.** ☞ Robin 07831 886601

S10067 KVERNELAND DP180 NT Front mounted 34 - 36in potato topper. c/w cross conveyer. PTO driven. Comes with 2 wheels and stands. Reasonably tidy with good flails **Good condition** ☞ Shaun 07850 978188

RS1141 RUMPTSTAD



Rotary ridger 2, 3 speed gear box rowx 30" hook tined interrow cultivator. C/w ridging hood, depth wheels, 3 speed gear box. Ready to go to work. More pictures on request **Very Good condition £1,250 o.n.o.** ☞ Robin 07831 886601

S10319 2005 BASILIER FK 160 mounted 66in wide bed tiller. C/w 60in hood coverer. Fitted heavy duty 1000 RPM gearbox. (540 PTO coupling). Plus 2 sets of clamp on fill in tines to work the fill width rather than 2 of 30in rows. **Excellent condition £1,950** ☞ Shaun 07850 978188

RS1517 STANDEN PEARSON



4 x 36 potato planter ridger hood. Twin planter belts stainless steel openers, track eradicators, wide aluminum loading walk way, chemical applicator per row. Very clean. Ready to go to work. Many more pictures on request. Delivery can be arranged. Located near Newmarket **Very Good condition £4,250 o.n.o.** ☞ Robin 07831 886601

RS1509 RUMPTSTAD



3FZ 2 X 36" hook tined rotary potato cultivator. C/w row ridding hood, 3 speed gear box, H D simplex chain drive, stabilizer wheels, full guarding. Ready to go to work. Located near Dover **Good condition £1,550 o.n.o.** ☎ Robin 07831 886601

S9738 1996 STANDEN Statesman 2 2 row harvester with inspection across the back. 40 & 45mm webbs this year, Dahlman rollers, steering & levelling. **£2,200** ☎ Shaun 07850 978188

S10097 RANSOMES spinner mounted 3 point linkage potato spinner. PTO driven with Cat 1 linkage. All there and working **Good condition £200** ☎ Shaun 07850 978188

RS1387 RANSOM FAUN 2 X 30" rows. C/w excellent ridger bodies. Nearly new tyres, beautiful little planter. Ready to go to work **Very Good condition £650** ☎ Robin 07831 886601

30 POTATO/BULB GRADERS AND EQUIPMENT

S10384 WELVENT Chiller unit for 1200 ton section insulated store. Presently in building but could be removed and moved on to another. Capable of cooling and ambient control. C/w 2 electrically opening Luvre vent panels and long duct to cool all the way along the store. Refurbished 10 years ago and upgraded to the latest refrigerant spec **Good condition** ☎ Shaun 07850 978188

S10180 HK TIMBERS Scotch 1 ton 6 board palletised potato boxes 6ft by 47inch deep by 38 tall. One inch gaps between boards, inside posts rounded off. **Very Good condition £22.50 each** ☎ Shaun 07850 978188

RS1510 WALTHAMUR



Weigher potato elevator weighing machine for paper sacks. Single phase electric in good working order **Very Good condition T B A** ☎ Robin 07831 886601

S10059 HERBERT System 1800 multigrader. All in one inc 6 ton end tip wide back hopper over Spira clean coils with 75mm cross conveyer under. Onto 6ft wide by 4ft long screen grader. Conveyer under onto 5ft plus 4ft flat belt picking table 35, 40, 45, 50 & 60 mm screens. **Good condition** ☎ Shaun 07850 978188

S10352 1992 HK TIMBERS



1.25 ton Scotch solid sided 6 by 4 boxes appx 400. Plus appx 800 standard 1 ton Scotch 6 by 4 boxes with 1 inch gaps. All palletised and sound **Good condition** ☎ Shaun 07850 978188

S10279 1 TON 6 BOARD palletised potato boxes 6ft by 47in deep by 38 tall. One inch gaps between boards, inside posts rounded off. **£20 each** ☎ Shaun 07850 978188

RS1511 TONG



Conveyer rubber belt conveyor in good working order. Located near Dover **Very Good condition £1,200** ☎ Robin 07831 886601

S10189 TONG free standing line. Suitable one ton box rotator. C/w its own 3 phase power pack to rotate it. **Average condition** ☎ Shaun 07850 978188

RS1437 SQUIRE



120 twin grader potato grader. Will split grade bulk up to 20tons per hr. 3 phase electric. Many spare webs. Various sizes. Sale due to change of farming policy. Located near Bromsgrove. Dry stored **Good condition £4,600** ☎ Robin 07831 886601

S10373 TONG self tip palletised portable yard skip. Ideal for waste and keeping tidy. Easy to empty **Good condition** ☎ Shaun 07850 978188

S9733 TONG 825 autoweigher, single twin cleat belt and holder to take one bag. On caster wheels. Plus Newlong hand held bag sticher if required. **Very Good condition £350** ☎ Shaun 07850 978188

31 POWER HARROWS

S10376 1989 KUHN HR301 3m power harrow with heavy duty through shaft 2 speed gearbox and standard packer roller. Fitted good hard surface tines. 1000 PTO **Very Good condition** ☎ Shaun 07850 978188

S10302 LELY 33 series 3m power harrow with good club tines, front clod bar, heavy duty through shaft gearbox and open centre crumbler. No leaks quite tidy for age. New PTO guard. **Good condition £750** ☎ Shaun 07850 978188

RS1363 1990 KUHN



HR350 3.5mt power harrow. New tines extra low speed gears, packer roller, dry stored, instruction book. For sale due to change in farming policy. More pictures on request **Good condition £3,500 o.n.o.** ☎ Robin 07831 886601

S10241 LELY Roterra 3m power harrow. Tidy order **Good condition £950** ☎ Shaun 07850 978188

RS1359 LELY POWER HARROW 3m combination drill. C/w rear piggy back linkage & RECO Sulky Suffolk Coulter Seed Drill. With Rekie following harrow. Very clean machine direct from farm ready to go to work. Can be delivered at cost to be agreed. More pictures on request **Very Good condition £2,750 o.n.o.** ☎ Robin 07831 886601

S10401 KRM Magnum 4000 hydraulic folding power harrow. C/w packer roller and 50% blades. One of the output shafts out of the Comer gearbox requires replacement to put in working order. **Poor condition** ☎ Shaun 07850 978188

S10240 2005 RECO Maschio DM 4000 4M power harrow recently fitted new tines & Gearbox. Good packer roller with good scrapers. Rear clod board & brackets for erradicators **Good condition £2,550** ☎ Shaun 07850 978188

S10257 RECO MACHIO DM 3000 3m power harrow Fitted HD through shaft gearbox and hydraulically controlled packer with nylon scrapers and clod bar. Done little work ideal for a combination drill **Very Good condition £2,850** ☎ Shaun 07850 978188

32 SILOS AND STORAGE

S10387 BENTALL Ben Bin Hardboard 50 ton indoor kit form silo. Made from 12ft by 4ft sheets with steel bands to hold. One access door. Dismantled with all parts ready to go **Very Good condition £160** ☎ Shaun 07850 978188

S10355 TOTE Bins. Palletised portable type in galvanised steel. C/w bottom slides. 4 of half ton & 2 one ton **Good condition** ☎ Shaun 07850 978188

S9347 CRITTALL grain bins. Nest of 3 bins built inside traditional brick barn. Buyer to dismantle and will get 16 panels 8ft wide and 18 10ft plus 8 part top & bottom 8fts and 12 part top & bottom 10fts. All very good having always been inside. Also 2 Small LH Inlet fans, one Typhoon & one Makano **Good condition** ☎ Shaun 07850 978188

S10334 2010 GSI



500 ton galvanised steel round Bins 33ft diameter, 2 of, 6 sheets high. C/w doors and very good access steps. Galvanise still bright. Should dismantle easily. 2 More a little older **Excellent condition Offers** ☎ Shaun 07850 978188

33 SPRAYERS

S10040 HARDI



Commander multitrack trailed 2800 litre sprayer fitted 24m boom with triplex jets induction bowl, clean water bottles, bout marker etc. 6 cylinder pump mounted in linkage steerage system. On 18.4 R38 tyres. Booms had Airbag system originally odd weld but pretty good. Full in cab controls via multiple boxes **Good condition £4,500** ☎ Shaun 07850 978188

S10184 EVERARD 800 litre mounted 12m sprayer. C/w electric in cab controls. PTO pump. Average manual folding single line booms. **Good condition £800** ☎ Shaun 07850 978188

RS1472 2020 AMAZONE



UF 1501 tractor three point mounted sprayer. C/w 20ft booms, mixing tank & hand wash. Ambset controls, current 12 months cert. Reason for sale going organic. Not used last year. More pictures on request **Excellent condition £17,500** ☞ Robin 07831 886601

PH0001 CLEANACRES 18 meter Airtec sprayer. Working order. **Very tidy £3950+Vat.** ☞ Peter 07818 451314

PH0003 HARDI 12 meter 3 point linkage mounted sprayer. **Good £2950+Vat** ☞ Peter 07818 45131

S9998 CHAFER 1000 litre Fibreglass front tank. C/w own pump and some plumbing. Brackets for use with tractor front linkage. **Good condition £900** ☞ Shaun 07850 978188

S10212 CASE GEM 2600 ES Trailed 24m 2600 litre sprayer. Tracking linkage with 6 cylinder pump on top. 200 litre washout tank. Induction bowl. Single lines with quad jets. 23.1 -26 & 300/95 R46 tyres. All straight and undamaged **Good condition** ☞ Shaun 07850 978188

S10297 2011 JAR MET



600 litre mounted crop sprayer with manual folding, winch up down 10m booms. Fitted single quick release nozzles, 2 cylinder diaphragm pump, small clean water tank and 4 section manual controls. Plastic tank and galvanised booms and frame. Hardly used on small farm. Ideal paddock sprayer **Excellent condition £950** ☞ Shaun 07850 978188

S10124 1990 BATEMAN



Hi Lo self propelled 2000 litres sprayer with 20- 24m hydraulic folding booms. 70% 12 - 32 tyres. 12000 hours. Tidy order **Good condition £10,000** ☞ Shaun 07850 978188

RS1444 BERTHOUD



3000 trailed sprayer 24mt, 3000ltrs, on row crop wheels, self tracking draw bar induction bowl, hand wash bowl, wash down hose. Long term current certificate **Very Good condition £4,250 o.n.o.** ☞ Robin 07831 886601

S10089 LELY



Hi Trac 250 low ground pressure 12m sprayer, VW engine only 2528 hours. Good cab with RDS SAM 20 monitor. 4 cylinder pump & 2000 litre tank. 17.5 LR24 Drive wheels Hydraulic folding booms. **Very Good condition** ☞ Shaun 07850 978188

34 SUBSOILERS

S10383 RANSOMES C 90 Subsoiler. C/w 2 Norman Raw legs and 2 HD steel wheels. **Good condition** ☞ Shaun 07850 978188

RS1453 T W B



7 LEG Cat 2 & 3 I linkage all good metal pressure roller brake back legs. Location Newmarket. More pictures on request. Transport can be arranged **Good condition £3,750** ☞ Robin 07831 886601

S10149 TWB 5 leg heavy duty Vee form type subsoiler with 5 swivel legs on 3.8m wide toolbar fitted packer roller on the back **Very Good condition £4,500** ☞ Shaun 07850 978188

RS1306 FLATLIFT



3m 3 leading low profile subsoiler swivel Legs. 2 rows of discs. Plus packer roller and spare Tungston points. All in good working order. More pictures on request **Very Good condition £7,500 o.n.o.** ☞ Robin 07831 886601

S10007 HOWARD Paraplow 4+2+1 (7) leg paraplow. C/w brackets for discs but only one present. Generally good especially wear plates. 11.5/80 - 15.3 depth wheel **Good condition** ☞ Shaun 07850 978188

S10336 HEAVY DUTY



4.7M Subsoiler 3 x 150 by 100m bar frame with 600mm packer on the back. Leading tines plus 7 subsoiling tines. Serolus kit **Good condition** ☞ Shaun 07850 978188

S10141 2 LEG HEAVY DUTY subsoiler 6ft wide 5 inch box toolbar 2 30in legs with good wings and points **Good condition £600** ☞ Shaun 07850 978188

RS1475 MASTEMBROKE



Single leg trailed mole drain hydraulic lift wheels and S S leg. In good working order. Location Atherstone Works. More pictures on request **Good condition £1,750** ☞ Robin 07831 886601

S10223 TIMAG 2 leg trailed heavy duty mole drainer. Pulls 2 reversible 4ft mole legs hardly worn on one end with opener discs. 2 12.5/ 80 -15.3 transport tyres. 2 very good rams to lift out. Very sturdy unit. **Very Good condition** ☞ Shaun 07850 978188

RS1377 MOORES single long beam sub soiler. C/w adjustable leg. Located near Oxford. Pictures on request **Good condition £450** ☞ Robin 07831 886601

36 TRACTORS & EQUIPMENT

S10128 1987 MF 2685 Tractor, late model with electronic hydraulic controls, 70% 16.9 R38 rears. Only 4651 hours. Straight tractor **Good condition £8,000** ☞ Shaun 07850 978188

S10406 1993 CASE INTERNATIONAL 885 Duo 4 wd tractor on 70% 16.9 - 34 rears and large fronts. Appx 6000 hours. Tidy tractor had light use. **Very Good condition** ☞ Shaun 07850 978188

S10254 1982 MF 2720 4 Wd tractor on PAVT wheels with 70% rears. Tidy well maintained tractor **Good condition** ☞ Shaun 07850 978188

S10388 1993 RENAULT



90-34 4 wd tractor fitted with Fauchaux F30 power loader. MWM engine showing 4979 hours. Pick up hitch & 2 spools. Tidy cab with most cladding in tact. 60% 16.9 - 34 rears & 390/85 R 30 fronts. Tidy for age **Good condition £7,750** ☞ Shaun 07850 978188

RS1474 NUFFIELD 460 original tractor in her working clothes. Live hydraulics & PTO, oil leak from steering box, belt pulley. Will run but engine needs

attention. Been on the same farm for over twenty years. Location Godmanchester, Hunts. Pictures on request **Average condition £1,500** ☞ Robin 07831 886601

S10389 1973 INTERNATIONAL



454 2 wd tractor with standard IH Pre Q safety cab. 11 - 36 tyres 60%. Pick up hitch 3859 hours. Nice Tidy original tractor **Very Good condition £4,350** ☞ Shaun 07850 978188

RS1288 I H MF Front weights. Assorted front end weights to fit Case IH & older MF tractors **Good condition Offers** ☞ Robin 07831 886601

S10209 1972 FORD 4000 2 wd Tractor basic model, no cab or roll bar. 70% 12 - 36 rears, 10 - 16 or 7.50-16 fronts. Recently restored well. **Very Good condition** ☞ Shaun 07850 978188

S10378 1989 ISEKI TU 320 4WD Compact tractor fitted Lewis Backhoe loader and Lewis front power loader with 4ft bucket. Hydrostatic drive and 60% Grassland tyres. Very useful. **Very Good condition £5,500** ☞ Shaun 07850 978188

S10159 YARA N sensor ALS active sensor kit, comes with all the wiring loom & sensors plus Windows 10 I Pad with in cab mounting. Roof mounting unit has its own light source for nightime operation. **Very Good condition £5,750** ☞ Shaun 07850 978188

S10391 1972 DAVID BROWN



990 Selectamatic 2wd tractor in white & brown livery fitted metal cab with all doors glass. Sympathetically restored tractor with genuine low hours. **Very Good condition £3,850** ☞ Shaun 07850 978188

RS1515 MASSEY FERGUSON MF40 loader to fit MF35/135, 65 & 165 complete with all hydraulic pipes. Fork need a bit of attention. Sorry no pictures. Located near Leicester **Good condition £500** ☞ Robin 07831 886601

RS1513 2002 MASSEY FERGUSON



8220 extra power controll. 166hp 8250hrs tyres rear 520 x 85R 38 40% good. Front 420 X 85R 28 full front weights, 3 hydraulic spool valves, no rust,

No broken glass. In good working order. Poughing when photographed. Location near Grantham **Good condition £18,750 o.n.o.** ☞ Robin 07831 886601

S8990 2007 HYDRAC front linkage for McCormick & similar tractors 100 -140hp tractors. C/w 2 QA end lift arms, rams & some pipework. Basically new shopsold and never fitted **Excellent condition £1,200** ☞ Shaun 07850 978188

S10367 1984 MF



690 12 speed 2 wd tractor on 70% 13.6 -38 rears and 7.50 -18 fronts. Fitted 2 spool and pick up hitch all in good working order with hook and drawbar. Mechanically good but cab average **Good condition £4,750** ☞ Shaun 07850 978188

S9906 1998 RENAULT 725 RZ 4wd 160HP tractor. C/w front linkage & PTO. 60% 20.8 R 38 rears, 50% 16.9 R28 Fronts. 8350 Hours runs well. Very straight & sound **Good condition** ☞ Shaun 07850 978188

S10348 JOHN DEERE



2140 Power Synchron 2 wd tractor fitted power loader with single lever control in the SG2cab. Runs and starts well. Fitted spools and pick up hitch. Lower link adjustment handle intact and working. 16.9 34 rears 60% 12.5/80 - 15.3 fronts Gears work nicely and the cab has some trim still inside. Good for age **Good condition £7,000** ☞ Shaun 07850 978188

RS1492 MASSEY FERGUSON



MF60 Digger. C/w 12" back actor trenching bucket & front grain bucket. In her working clothes. Pictures on request. Located near Banbury **Average condition £2,000 o.n.o.** ☞ Robin 07831 886601

S10393 NEW HOLLAND



T7 225 Autocommand 4wd Tractor, 50K gearbox with air brakes, Sidewinder 2 armrest on Dynamic command leather sided seat. Quick steer option, front linkage, Climate control and 12 work lights. Nice owner driven tractor. Only done 3950 hours. Michelin 650/65 R42 rears 60% and 540/65 28 fronts 70%. 1000/540 & Eco PTO **Excellent condition** ☞ Shaun 07850 978188

S10323 2018 CASE IH



Farmall 55C 2wd tractor, 55 HP fitted good cab, 3 point linkage etc. Only done 900 hours on a small holding. **Excellent condition £19,500** ☞ Shaun 07850 978188

37 TRAILERS

S10190 IFOR WILLIAMS 12 by 6 Flat trailer, wheels underneath with alloy chequerplate floor. Ex Livestock trailer. **Good condition** ☞ Shaun 07850 978188

RS1478 BALE TRAILER multi flat 8 artic type bale trailer with stepped frame and Dolly on super single wheels. Located near Newmarket. More pictures on request **Very Good condition £5,750** ☞ Robin 07831 886601

S10171 TRIFFITT



14 Ton Monocoque trailer on Ag Super singles c/w hyd brakes and back door plus easy sheet. Seen little use **Excellent condition £15,000** ☞ Shaun 07850 978188

S10175 BAILEY easy sheet. Roll over easy sheet for 14 ton root trailer, compete kit removed from trailer **Very Good condition £1,475** ☞ Shaun 07850 978188

BROKERS

S10340 AS FF10 Monocoque trailer, tandem walking beam axles, 12.5/80 - 15.3 tyres. Swinging back door & grain chute. Solid & reasonably tidy for age. Available with a full set of silage sides. **Good condition £2,500** ☞ Shaun 07850 978188

S10150 2 HORSE TRANDEM AXLE horse trailer for large horses. 87 ins tall by 5ft wide. Side access door and rear load ramp door. 6 - 16 Tyres and wheels. Alloy chequerplate floor **Average condition £600** ☞ Shaun 07850 978188

S10344 1979 AS



FF10 Tandem walking beam axle trailer fitted front loading silage sides. Solid trailer but well used. 12.5/80 - 15.3 tyres. **Average condition £2,000** ☞ Shaun 07850 978188

RS1354 N F M



Header trailer heavy duty 4 wheeled adjustable header trailer. As New **Excellent condition £2,850** ☞ Robin 07831 886601

S10256 2013 BAILEY 15 ton beaver tail low loader trailer on 435/50 19.5 tyres, sprung axles. C/w manual ramps and wedge to make a flat deck. 33ft long fitted strap box. **Good condition** ☞ Shaun 07850 978188

S10325 BATESON



Livestock 20ft by 7ft by 6ft 6 cattle transport trailer, Tandem axle on good 6 stud wheels with 10 ply 11.5 / 80 - 15.3 tyres. Flat trailer fitted good detachable alloy cattle body with adjustable partition gate, ramp red door and side gates. New LED lights **Very Good condition £6,500** ☞ Shaun 07850 978188

S10309 IFOR WILLIAMS TA510G Tandem axle Livestock trailer 6 - 16 Landrover wheels to outside. Galvanised chassis, white roof. Sheep decks. Tidy for age ☞ Shaun 07850 978188

S10144 ALLOY BODIED TANDEM AXLE lorry body trailer conversion. On Spring 10 stud axles with 385/65 R22.5 Super singles. Decent 17ft by 3ft 9 by 7ft Alloy body with back door requiring repair. Useful bulk hauler **Average condition** ☞ Shaun 07850 978188

S10261 2016 MARSHALL QM 11400 14 ton Monocoque trailer on 460/60 - 22.5 tyres. C/w air & hydraulic brakes plus hydraulic back door, mudguards, sprung drawbar, front ladder and window opening. **Good condition** ☞ Shaun 07850 978188

S10339 1985 GRIFFITHS GT100 10 ton tandem sprung axle Monocoque trailer. Decent 12.5/80 - 15.3 tyres . Front ladder, swinging back door with chute. Solid enough having been resprayed. **Good condition** ☞ Shaun 07850 978188

38 WHEELS/TYRES (DUAL/ROWCROP)

RS1502 ROW CROP WHEELS to fit JD or Class rear 340-85 R48 80% good. Front 270-95 R36 80% good. Pictures on request. Location near Spalding. Reason for sale sold Tractor **Very Good condition £1,550** ☞ Robin 07831 886601

S10289 STOCKS 11-36 pair of heavy duty Rocrop wheel rims and bolt in centres for JCB Fastrack. No tyres included. **Good condition £150** ☞ Shaun 07850 978188

S9985 ALLIANCE A350 12.4 - 46 Rocrop tyres (60%) fitted to 8 stud 275 PCD, 220 hole fixed centre wheels. **Very Good condition £800** ☞ Shaun 07850 978188

S10405 ALLIANCE 300/95 R46 Rocrops. C/w 8 Stud 275 PCD centres (JD) 220 hole 70% Tyres. Plus dulling kit and 2nd set with 30/5 % tyres. Also matching 12.4 R 32 fronts with 70% tyres and 10 stud centres 325 PCD 280 hole. Suit JD 6155 **Very Good condition** ☞ Shaun 07850 978188

S9620 BETTINSON 230/95 R44 (9.5 R44) Rocrops. Pair of suit JD 6210 & similar (rears) fitted bolt in centres & as new BKT tyres, plus 8.3 R32 fronts with 15% Kleber tyres on Stocks bolt in 8 stud centres. **Very Good condition** ☞ Shaun 07850 978188

S9557 28.1 - 26 FLOATION TYRES probably 12 ply mounted on fixed centre early JD rims 200PCD 150 hole. **Very Good condition £1,000** ☞ Shaun 07850 978188

S10227 13.6 R 48 ROCROP WHEELS fitted centres for John Deere 6160 plus pair of 11.2 R36 fronts. C/w 40% Alliance tyres. 8 stud 275 PCD, 220 hole suit Deutz etc. **Average condition** ☞ Shaun 07850 978188

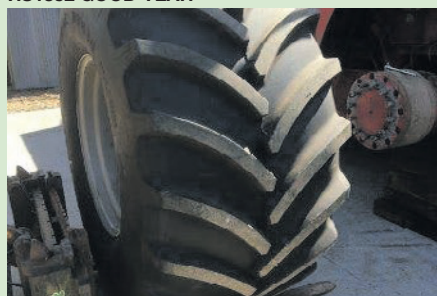
S10382 STOCKS 20.8 R38 duals. C/w clamps and sound 40% tyres **Very Good condition** ☞ Shaun 07850 978188

S9926 MICHELIN 650 / 65 R 38 tyres pair of used ones with 50% tread. Plus pair of 540/65 R28 tyres (40%) to make set. **Good condition** ☞ Shaun 07850 978188

S9986 MICHELIN 600/65 R38 tyres fitted to John Deere bolt in centre rims, 8" PCD hole stud suit JD 6600-6800 tractors. **Average condition £700** ☞ Shaun 07850 978188

S10142 STOCKS 16.9 R 38 dual wheels with full set of clamps and 5% tyres **Average condition £400** ☞ Shaun 07850 978188

RS1352 GOOD YEAR



Floatation tyre 900 / 55 R32. As new done a couple of season on combine. Location near Fakenham Norfolk **Excellent condition £3,750** ☞ Robin 07831 886601

S10226 STOCKS 520/85 R38 duals with 90% tyres and clamps. Plus pair of 16.9 R 28 fronts, only one fitted with a tyre **Very Good condition** ☞ Shaun 07850 978188

S10228 TRELLEBORG 230/95 R44 50% Rocrop Tyres on rims with 8 stud 200PCD centres 150 hole suit M Cormick CX105 tractor plus fronts 8.3 R32 5% with 8 stud centres 275 PCD 220 holes. **Good condition Offers** ☞ Shaun 07850 978188

RS1353 TITAN 22.5x16.i front floatation tyres. Block type tread as new of a combine done only 600 acres. Location near Fakenham **Excellent condition £750** ☞ Robin 07831 886601

S10360 ALLIANCE 520/85 R42 and 420/85 R30 tyres all 90% on Stocks Dual wheel rims. Seen little use **Very Good condition** ☞ Shaun 07850 978188

S10307 BKT 550/45 -22.5 tyres on 6 stud rims to fit New Holland TX66/68 rear axles. Good paint & tread **Good condition £850** ☞ Shaun 07850 978188

RS1499 ROW CROP WHEELS



Wheel & tyres. Were fitted on Class tractor. Rear 80 % good 380-9 -R50 or (14-9 R50) fronts 60% good 380 -85 R34 or (14-9-R34) Pictures on request Location near Kings Lynn **Very Good condition £1,800 o.n.o.** ☞ Robin 07831 886601

S10166 NANKANG 6 by 9 nylon 10 ply tyres on 5 stud split rims. Unused appx 6 available **New condition £40 each** ☞ Shaun 07850 978188

RS1418 SAM MORTON floatation tyres 8 stud to fit MF 45 55 like new. Only used once. Located near Chipping Campden **Excellent condition £650** ☞ Robin 07831 886601

S10086 23.1 R 26 TYRES with appx 60% treads plus pair of steel rims with 8 holes appx 1.25in each 8in PCD 5.5ins centre hole. **Good condition** ☞ Shaun 07850 978188

39 VEGETABLE EQUIPMENT

S9122 SPECIALISED HARVESTING SYSTEMS Trailed sprout harvesters, 4 head models with 6 blades per head, hydraulic driven. C/w covered operator area and unloading hopper at the back. Choice of 2 in working order **Good condition £3,800 each** ☞ Shaun 07850 978188

S9127 2017 VEGETABLE HARVESTING SYSTEMS T section wrap round vegetable harvester hydraulic folding veg collector for manual loading caulis etc. Has remote controls fitted so cutters can stop/ start the tractor. **Very Good condition £13,000** ☞ Shaun 07850 978188

RS1503 STRAW SPREADER Manual small bale straw spreader for strawberries & other veg. Location South Wales. Pictures on request **Good condition £350** ☞ Robin 07831 886601

S9129 2015 DEMAN self propelled sprout harvester. Tracked 3 row machine with 4.5 ton tank and cleaning fan to clean off sprouts before entering the tank. Front operation with full canopy only 1743 hours. **Excellent condition £75,000** ☞ Shaun 07850 978188

40 VEHICLES/LGPV

RS1487 2007 KUBOTA



RTV900 4x4. C/w cabin, side doors & hydraulic tipping deck. In her working clothes. Starts on the button. More pictures on request. Located near Banbury **Good condition £4,500 o.n.o.** ☞ Robin 07831 886601



To find your
nearest branch
scan here



Now with seven branches throughout East Anglia and into the East Midlands,
why not make us your number one choice for

AGRICULTURE | CONSTRUCTION | GROUNDSCAPE



SALES | SERVICE | PARTS | HIRE

For more information visit www.benburgess.co.uk



- Site clearance
- Forestry works
- Roadside works
- Fully operated machinery including Harvester, Forwarder, Chippers, Mulchers, 360° with various attachments (tracked) Sennebogen road legal machinery, etc.



E: kate@kwrplanthire.co.uk | T: 07775 770454
www.kwrplanthire.co.uk

Follow us on:
 #kwrplanthire
 @kwrforestry

Concrete Flooring Specialist and supply of agricultural buildings **S J STANBERRY & SONS LTD**



01945 870076

■ nationwide coverage ■ sales@sjstanberry.com ■ www.sjstanberry.com

■ INDUSTRIAL,
AGRICULTURAL
OR COMMERCIAL
■ INTERNAL OR
EXTERNAL
■ STEEL FIXING

■ BRUSH, TAMP OR
POWER
FLOAT FINISHES
■ FOUNDATIONS

POULTRY UNITS &
STABLE YARD
■ SILO BASES
■ APRONS & SHED
FLOORS

■ ANAEROBIC DIGESTION
TANK BASES
■ GRAIN, POTATO &
MACHINERY STORES
■ GROUNDWORKS &
PREPARATION

We Specialise in Farm and Business Insurance



**Harold Woolgar
Insurance**

The Farm Insurance Specialist
Tel: 01427 873888

The Independent On-Farm Insurance Service

35 High Street, Epworth DN9 1EP

Tel: 01427 873388 also 01427 873888

Serving customers from Lincolnshire, Derbyshire, Nottinghamshire & Yorkshire

Authorised & Regulated by The Financial Conduct Authority



NY TRACTOR PARTS



**Suppliers of new and used parts
for John Deere tractors**
We supply to UK & Overseas

Rockshaft kits available for most models

Always breaking JD tractors for used parts - most models

STOCKISTS FOR: **BOSCH**

Tel: 01673 828883 Fax: 01673 828892

www.nytractorparts.co.uk email: info@nytractorparts.co.uk
Unit 2, The Forge, Moor Road, North Owsby, Market Rasen, Lincs LN8 3PR



Richard Betts 4x4 (Lincoln) Ltd Tel 01522 246522 & 07764 511257



BOBCAT E17Z EXCAVATOR
2022, 170 hours, hammer
lines, twin tracking, exp tracks,
blade with extensions, key-
pad, orange beacon, hitch & 3
buckets, tracks as new..£17,750



BOBCAT E19 EXCAVATOR
2019, 1018 hours, hammer lines,
twin tracking, exp tracks, blade
with extensions, heated cab,
key-pad, hitch & 3 buckets, 95%
tracks.....£16,500



JCB MUCK GRAB
2022 jcb agri, 7ft 6", bolt
on tines, q-fit brackets,
as new.....£2,950



**21' X 9' MODULAR CANTEEN
OFFICE UNIT**
230v hookup, lockable, anti vandal, solid
sheet flooring, open plan kitchen area,
separate office space, lighting, heaters,
sockets, forklift tines pockets, lifting eye
points, dry condition.....£2,950



JCB SHOVEL BUCKET
new condition, 1 cubic meter
telehandler bucket, 7ft 6",
reversible bolt on wear plate,
q-fit brackets. In stock
£1,175



JCB 8008 CTS
2015, 1473 hours, expanding
tracks, folding roll bar, seat
belt, blade with extensions,
90% tracks, 3 new buckets.
.....£8,250



BOBCAT L85 ARTICULATED LOADER
2021, 459 hours, 68hp, 1.8t lift, 2 speed, h/f hyd,
joystick, hyd locking pins, a/c, beacons, c/w
bucket & tines.....£42,750



BOBCAT T450 TRACKED SKID STEER
2022, 196 hours, 55 hp, hyd aux, work lights,
beacon, key-pad, 2961 kg, tracks as new.....
£31,750



32' X 10' MODULAR CANTEEN OFFICE UNIT
230v hookup, lockable, 2 way personnel door
entry, solid sheet flooring, open plan kitchen
area, separate office space, lighting, heaters,
sockets, lifting eye points, dry condition..£4,950



THWAITES 1 TON DUMPER
2020 thwaites 1 ton high tip dumper, 280 hours, seat
belt, folding roll bar, orange & green beacons, yanmar
engine, 95% tyres.
.....£14,750

www.richardbetts4x4.co.uk/

james@richardbetts4x4.co.uk